

musical  
america  
SPECIAL REPORTS

September  
2023

The 2023-24 Guide to  
**MUSIC SCHOOLS**





# MUSIC SCHOOLS

For those schools in the listings, you'll find detailed information on degrees offered, available areas of study, numbers of students and teachers, career and post-graduate assistance, and links to social media and financial information. We also asked each institution to describe what makes each unique. We relied on the schools to tell their own stories.

Academy of Vocal Arts.....	2	Frost School of Music.....	19	The Shepherd School of Music.....	37
Adelphi University.....	3	Irving S. Gilmore School of Music .....	20	The Orchestra Now .....	37
Arizona State University		The Glenn Gould School at		The Tianjin Juilliard School .....	38
School of Music, Dance and Theatre .....	3	the Royal Conservatory of Music .....	21	Townsend School of Music .....	38
Baldwin Wallace University		Guildhall School of Music & Drama .....	21	Trinity Laban Conservatoire of Music and Dance.....	39
Conservatory of Music.....	4	The Hartt School .....	22	The UCLA Herb Alpert School of Music .....	40
Bard College Conservatory of Music .....	4	Hugh Hodgson School of Music.....	22	University of Cincinnati College-	
Bienen School of Music .....	5	IU Jacobs School of Music.....	23	Conservatory of Music (CCM).....	41
Biola University Conservatory of Music.....	6	The Juilliard School .....	24	University of Colorado Boulder College of Music.....	42
Blair School of Music .....	6	Leeds Conservatoire .....	25	University of Gothenburg	
Boston Conservatory at Berklee .....	7	Longy School of Music.....	26	Academy of Music and Drama.....	42
Boston University		Lynn University Conservatory of Music.....	26	University of Illinois School of Music .....	43
College of Fine Arts School of Music.....	8	Manhattan School of Music .....	27	University of Maryland School of Music.....	43
The Buchmann-Mehta School of Music .....	8	Mason Gross School of The Arts.....	28	University of Massachusetts	
Sarah and Ernest Butler School of Music .....	9	Robert McDuffie Center for Strings .....	28	Amherst Department of Music & Dance .....	44
Butler University School of Music.....	9	New England Conservatory .....	29	University of Massachusetts	
Carnegie Mellon University School of Music .....	10	New World Symphony,		Lowell Department of Music.....	45
Chopin University of Music.....	11	America's Orchestral Academy .....	29	University of Michigan	
Cleveland Institute of Music .....	11	Northeastern University Department of Music,		School of Music, Theatre & Dance.....	45
Colburn Conservatory of Music.....	12	College of Arts, Media & Design .....	30	University of Music Franz Liszt Weimar.....	46
The College of Performing Arts.....	13	Oberlin Conservatory of Music.....	30	University of Music and Performing Arts Graz	
Columbia University, Teachers College.....	14	The Ohio State University School of Music.....	31	(Kunstuniversität Graz) (KUG) .....	46
Aaron Copland School of Music .....	14	Pacific Region International Summer		University of North Carolina	
The Crane School of Music.....	15	Music Association (Prisma) Festival & Academy..	31	School of the Arts, School of Music.....	47
Curtis Institute of Music .....	15	Peabody Conservatory.....	32	University of Oregon, School of Music and Dance.....	48
DePaul University School of Music.....	16	Peck School of the Arts.....	33	USC Thornton School of Music .....	49
East Carolina University School of Music.....	16	Royal College of Music.....	34	University of Wisconsin-Madison	
Eastman School of Music.....	17	Royal Conservatoire of Scotland .....	35	Mead Witter School of Music.....	50
Hanns Eisler School Of Music Berlin.....	18	San Francisco Conservatory of Music.....	35	Virginia Symphony Orchestra .....	50
Florida State University College of Music.....	18	Schulich School of Music .....	36	Westminster Choir College .....	51
The Fredonia School of Music .....	19	Shenandoah Conservatory .....	36	Yale School of Music.....	52

## Editor's Note



It has been ten years since the first Guide to Music Schools was published, and what has become clearer as the world whizzes by is that studying music in the third decade of the 21st century is no singular pastime.

Conservatories, be they stand-alone or within a large university, have realized that, for today's musician, context is everything. And in looking over the last decade of listings—78 in this

edition, the most we've had—it's fascinating to observe how what were once simply called "career services" departments or "entrepreneurship 101" courses have exploded into internships, bona-fide teaching jobs at the local public school, orchestra jobs, opera-company apprenticeships, and even in-school artist management services.

University of Cincinnati's College Conservatory of Music has a special travel fund for auditioning, University of Colorado at Boulder has an entire department devoted to "Entrepreneurship for Music," Peabody Conservatory's is called LAUNCHPad, for students and recent alumni to literally "launch" their own ventures, along with learning how to market, manage, and raise funds for them. University of Maryland School of Music promotes its Be Worldwide, Get Worldready initiative, whereby a student's career goals are embedded into their curriculum. UM also offers "holistic advising," while The Colburn School requires students to take the Working Musician as well as the Healthy Musician, to prevent way-too-common performance injuries.

As schools provide a broader context for their evolving musicians, so too do students begin to understand how they can have an impact in that broader world. Having gained technical expertise as an artist, as well as learned how and where to apply it, the young graduate is suitably equipped to be not only a well-rounded citizen of the world, but, as a musician, how to make that world a better place.

Regards,

Susan Elliott  
Editor, *News and Special Reports*

COVER PHOTO: A student enjoys the McKinney Fountain by the Simon Music Center, Indiana University Jacobs School of Music, Bloomington, IN.



The 2023-24 Guide to  
**Music Schools**

## ACADEMY OF VOCAL ARTS

### WHAT MAKES THIS SCHOOL UNIQUE?

The Academy of the Vocal Arts is the only nationally accredited conservatory in the United States exclusively devoted to the training of young opera singers tuition-free. Artists from throughout the states and all over the world audition to study and perform in AVA's four-year program.

**LOCATION** 1920 Spruce Street  
Philadelphia, PA 19103  
UNITED STATES  
[www.avaopera.org](http://www.avaopera.org)

**ADMISSIONS** 215-735-1685  
[info@avaopera.org](mailto:info@avaopera.org)

**Audition Requirements** [Audition Requirements](#)

**FINANCIAL INFORMATION**  
[Tuition & Fees](#) / [Financial Aid & Scholarships](#)

### CAREER / POST-GRADUATION ASSISTANCE

At this time, no degrees are granted, but Artist Diplomas are awarded to those whom the AVA believes are ready for operatic and concert careers, and have completed the minimum required classes. AVA is an accredited, non-degree-granting member of the National Association of Schools of Music. Course work completed at AVA does not compile credit hours and is not transferable to other institutions.

**KEY STATISTICS** (college level and above)

**22** music students

**Music Faculty:** **20** full time, **3** adjunct

*Scholarship details:* \$100,000 per Resident Artist

### AREAS OF STUDY

Vocal Arts/Opera

### DEGREE PROGRAMS

No degrees offered; Resident Artists graduate with Artist Diploma

### PANDEMIC & SAFETY: SCHOOL POLICIES

[Policies & Procedures for this school](#)

Proof of vaccination required? (✓=Yes ✗=No)

✓ Students ✓ Faculty ✓ Staff

### SOCIAL LINKS



## ADELPHI UNIVERSITY

### WHAT MAKES THIS SCHOOL UNIQUE?

Adelphi is known for its top-ranked academic programs, small classes, and personalized attention. Our students call their Adelphi experience transformative and call their community family—exactly what your college studies at all levels should be about.

**LOCATION** Performing Arts Center Room 207  
One South Avenue  
Garden City, NY 11530  
UNITED STATES  
[www.adelphi.edu](http://www.adelphi.edu)

**ADMISSIONS** 516-877-3050  
[admissions@adelphi.edu](mailto:admissions@adelphi.edu)

**Audition Requirements** [Audition Requirements](#)  
Audition requirements vary according to discipline. Click above link for complete information.

**FINANCIAL INFORMATION**  
[Tuition & Fees](#) / [Financial Aid & Scholarships](#)

**CAREER / POST-GRADUATION ASSISTANCE**  
[Career Assistance](#)

### KEY STATISTICS (college level and above)

**65** music students  
**Music Faculty:** 6 full time, 50 adjunct  
*Scholarship details:* \$20,000-\$36,000 for entering fulltime first-year students with exceptional academic achievement and demonstrated talent

### AREAS OF STUDY

Brass • Composition (Performance) • Guitar • Jazz Studies & Contemporary Media • Music Business • Music Education • Music Therapy • Piano • Strings • Vocal Arts/Opera • Winds & Percussion • Instrumental Performance

### DEGREE PROGRAMS

[BS in Music](#); [BS in Music Education](#); [Minor in Digital Recording Arts and Music Technology](#)

### ONLINE COURSES

[Online courses information](#)  
Up to 25% will be available as hybrid or online-only courses

### PANDEMIC & SAFETY: SCHOOL POLICIES

[Policies & Procedures for this school](#)  
Proof of vaccination required? (✓=Yes ✗=No)  
✗ Students ✗ Faculty ✗ Staff

**SOCIAL LINKS**   

## ARIZONA STATE UNIVERSITY SCHOOL OF MUSIC, DANCE AND THEATRE

### WHAT MAKES THIS SCHOOL UNIQUE?

Located in the culturally rich Southwest desert in one of the country's most vibrant, expanding urban centers, the ASU School of Music, Dance and Theatre affords its students not only access to this diverse environment but also engagement in Phoenix's diverse, flourishing arts community.

**LOCATION** 50 East Gammage Parkway  
Tempe, AZ 85287-0405  
UNITED STATES  
[musicdancetheatre.asu.edu](http://musicdancetheatre.asu.edu)

**ADMISSIONS** 480-965-5069  
[mdtadmissions@asu.edu](mailto:mdtadmissions@asu.edu)

**Audition Requirements** [Audition Requirements](#)

**FINANCIAL INFORMATION**  
[Tuition & Fees](#) / [Financial Aid & Scholarships](#)

**CAREER / POST-GRADUATION ASSISTANCE**  
[Internships and Careers Assistance](#)

**KEY STATISTICS (college level and above)**  
**750** music students  
**Music Faculty:** 74 full time, 60 adjunct

### AREAS OF STUDY

Arts Leadership • Brass • Collaborative Piano • Composition (Performance) • Conducting • Early Music • Guitar • Jazz Studies & Contemporary Media • Media studies (including audio and video production) • Music Business • Music Education • Musicology • Music Therapy • Organ • Piano • Strings • Vocal Arts/Opera • Winds & Percussion • Arts leadership (through Herberger Institute for Design and the Arts) • Music Theatre • Pedagogy • Interdisciplinary Digital Media

### DEGREE PROGRAMS

[Undergraduate Programs](#) / [Graduate Programs](#)

**ADDITIONAL PROGRAMS** (non-matriculating/prep)  
[Minors and Certificates](#)

### ONLINE COURSES

[Online courses information](#)  
Up to 25% will be available as hybrid or online-only courses

### PANDEMIC & SAFETY: SCHOOL POLICIES

[Policies & Procedures for this school](#)  
Proof of vaccination required? (✓=Yes ✗=No)  
✗ Students ✗ Faculty ✗ Staff

**SOCIAL LINKS**    



## BALDWIN WALLACE UNIVERSITY CONSERVATORY OF MUSIC

### Baldwin Wallace University

#### WHAT MAKES THIS SCHOOL UNIQUE?

Bold opportunities are at the center of Baldwin Wallace University's nationally acclaimed Conservatory of Music. Our All-Steinway Conservatory is top ranked and provides students with extraordinary opportunities to perform, compose, conduct, teach, and excel in preparation for becoming citizen artists. Individual attention is central to our programs.

#### LOCATION

275 Eastland Road  
Berea, OH 44017  
UNITED STATES  
[www.bw.edu/schools/conservatory-music](http://www.bw.edu/schools/conservatory-music)

**ADMISSIONS** 440-826-2368  
[music@bw.edu](mailto:music@bw.edu)

**Audition Requirements** [Audition Requirements](#)

#### FINANCIAL INFORMATION

[Tuition & Fees](#) / [Financial Aid & Scholarships](#)

#### CAREER / POST-GRADUATION ASSISTANCE

[Career Assistance](#)

#### KEY STATISTICS (college level and above)

**311** music students  
**Music Faculty:** **36** full time, **39** adjunct

#### AREAS OF STUDY

Arts Leadership • Brass • Collaborative Piano  
• Composition (Performance) • Guitar • Jazz Studies  
& Contemporary Media • Media studies (including audio and video production) • Music Business  
• Music Education • Musicology • Music Therapy  
• Organ • Piano • Strings • Vocal Arts/Opera • Winds & Percussion • Music Theatre • Music Theatre Direction

#### DEGREE PROGRAMS

[Undergraduate Programs](#)

*Additional details:* BA in Music

#### PANDEMIC & SAFETY: SCHOOL POLICIES

Proof of vaccination required? (✓=Yes ✗=No)  
✗ Students ✗ Faculty ✗ Staff

#### SOCIAL LINKS



## BARD COLLEGE CONSERVATORY OF MUSIC

### Bard College

#### WHAT MAKES THIS SCHOOL UNIQUE?

All Conservatory undergraduates pursue a five-year program leading to two degrees: the Bachelor of Music degree and the Bachelor of Arts degree in a field other than music. Bard Conservatory offer degrees in instrumental and vocal performance, composition, and traditional Chinese instruments.

#### LOCATION

30 Campus Road  
Annandale-on-Hudson, NY 12504  
UNITED STATES  
[www.bard.edu/conservatory](http://www.bard.edu/conservatory)

#### ADMISSIONS

845-752-2409  
[conservatoryadmission@bard.edu](mailto:conservatoryadmission@bard.edu)

#### Audition Requirements

[Undergraduate Double Degree](#)  
[Graduate Vocal Arts Program](#)  
[Graduate Instrumental Arts Program](#)  
[Graduate Conducting Program](#)

#### FINANCIAL INFORMATION

[Tuition & Fees](#) / [Financial Aid & Scholarships](#)

#### CAREER / POST-GRADUATION ASSISTANCE

Graduates of Bard are well-equipped for whichever path they choose to follow. We have students who have gone on to play with major orchestras in the United States, Europe, and Asia, and we have students who have gone on to found their own festivals and ensembles. [Read more about Bard's alumni/ae.](#)

#### KEY STATISTICS (college level and above)

**170** music students  
**Music Faculty:** **13** full time, **80** adjunct

#### AREAS OF STUDY

Brass • Collaborative Piano • Composition (Performance) • Conducting • Music Therapy • Organ • Piano • Strings • Vocal Arts/Opera

#### DEGREE PROGRAMS

[Undergraduate Programs](#); [Graduate Vocal Arts \(MM\)](#); [Graduate Instrumental Arts \(MM\)](#); [Graduate Conducting \(MM\)](#); [Advanced Performance Studies Program \(graduate certificate\)](#); [Post-Graduate Collaborative Piano Fellowship](#)

*Additional details:* BM degrees in performance through a double-degree program; instruments offered are Pipa, Erhu, Guzheng, Ruan, Dizi, Sheng, Guqin, Chinese Percussion

#### PANDEMIC & SAFETY: SCHOOL POLICIES

[Policies & Procedures for this school](#)  
Proof of vaccination required? (✓=Yes ✗=No)  
✓ Students ✓ Faculty ✓ Staff

#### SOCIAL LINKS





# BIENEN SCHOOL OF MUSIC

Northwestern University

Northwestern University is committed to excellent teaching, innovative research, and the personal and intellectual growth of its students in a diverse academic community.

## WHAT MAKES THIS SCHOOL UNIQUE?

With its proximity to the cultural hub of Chicago, conservatory-level musical training, and engaging academic environment, Northwestern's Bienen School of Music provides students an educational atmosphere unlike any other. Undergraduates may pursue dual degrees, double majors, or an ad-hoc (self-designed) major.

**LOCATION** Ryan Center for the Musical Arts  
70 Arts Circle Drive  
Evanston, IL 60208  
UNITED STATES  
[www.music.northwestern.edu](http://www.music.northwestern.edu)

**ADMISSIONS** 847-491-3141  
[musiclife@northwestern.edu](mailto:musiclife@northwestern.edu)

**Audition Requirements** [Audition Requirements](#)

**FINANCIAL INFORMATION**  
[Tuition & Fees](#) / [Financial Aid & Scholarships](#)

## Northwestern BIENEN SCHOOL OF MUSIC

### CAREER / POST-GRADUATION ASSISTANCE

The Bienen School of Music offers many courses related to crafting and building a successful career in music, and our internationally renowned faculty are an invaluable resource in guiding and preparing students for work post-graduation. Northwestern's Career Advancement Office provides a wide array of career planning services including assistance with cover letter and résumé writing, internship applications, and interview skills, as well as more specialized offerings such as panels and opportunities to network with Chicago arts professionals.

**KEY STATISTICS** (college level and above)  
600 music students  
**Music Faculty:** 54 full time, 71 adjunct

### AREAS OF STUDY

Brass • Composition (Performance) • Conducting  
• Guitar • Jazz Studies & Contemporary Media  
• Music Education • Musicology • Piano • Strings  
• Vocal Arts/Opera • Winds & Percussion • Music Cognition • Music Theory

### DEGREE PROGRAMS

[Undergraduate Programs](#) / [Graduate Programs](#)

**ADDITIONAL PROGRAMS** (non-matriculating/prep)  
[Davee Media Library](#)

### PANDEMIC & SAFETY: SCHOOL POLICIES

Proof of vaccination required? (✓=Yes ✗=No)  
✗ Students ✗ Faculty ✗ Staff

**SOCIAL LINKS**   

## Northwestern BIENEN SCHOOL OF MUSIC

[www.music.northwestern.edu](http://www.music.northwestern.edu)

### The Bienen School of Music offers

- A 152,000-square-foot state-of-the-art facility
- Conservatory-level training combined with the academic flexibility of an elite research institution
- Traditional BM, BA, MM, PhD, and DMA degrees as well as innovative dual-degree, self-designed, and double-major programs
- Close proximity to downtown Chicago





## BIOLA UNIVERSITY CONSERVATORY OF MUSIC

### Biola University

#### WHAT MAKES THIS SCHOOL UNIQUE?

Students at Biola learn firsthand the rigors of music composition and history, as well as the challenge of enhancing personal performance. They develop a sound Christian worldview taught by today's top thinkers and musicians while studying in the heart of Southern California, one of the world's leading music centers.

**LOCATION** 13800 Biola Avenue  
La Mirada, CA 90639  
UNITED STATES  
[www.biola.edu/music](http://www.biola.edu/music)

**ADMISSIONS** 562-903-4892  
[music@biola.edu](mailto:music@biola.edu)

#### Audition Requirements

All prospective Conservatory students must audition. [Check here for specific requirements per area and instrument.](#)

#### FINANCIAL INFORMATION

[Tuition & Fees](#) / [Financial Aid & Scholarships](#)

#### CAREER / POST-GRADUATION ASSISTANCE

Conservatory faculty work closely with students on graduate school preparation and job placement. Worship majors are required to complete an internship at a local church. Music Education majors have required observation hours and a post-graduation semester-long student teaching assignment. Conservatory students also have the [Biola Career Center](#) as a resource.

**KEY STATISTICS** (college level and above)  
**175** music students  
**Music Faculty:** **9** full time, **13** adjunct

#### AREAS OF STUDY

Brass • Composition (Performance) • Guitar • Music Education • Music Therapy • Organ • Piano • Strings • Vocal Arts/Opera • Winds & Percussion • Commercial Music • Musical Theatre • New Media • Theatre • Worship Arts

#### DEGREE PROGRAMS

[Undergraduate Programs](#)

#### ONLINE COURSES

[Online courses information](#)

Additional plans under consideration

#### PANDEMIC & SAFETY: SCHOOL POLICIES

[Policies & Procedures for this school](#)

Proof of vaccination required? (✓=Yes ✗=No)  
✗ Students ✗ Faculty ✗ Staff

#### SOCIAL LINKS



## BLAIR SCHOOL OF MUSIC

### Vanderbilt University

#### WHAT MAKES THIS SCHOOL UNIQUE?

Vanderbilt's Blair School of Music is a world-class music program exclusively for undergraduates at a top-20 University.

**LOCATION** 2400 Blakemore Avenue  
Nashville, TN 37212  
UNITED STATES  
[blair.vanderbilt.edu](http://blair.vanderbilt.edu)

**ADMISSIONS** 615-343-8855  
[blair.inquiries@vanderbilt.edu](mailto:blair.inquiries@vanderbilt.edu)

**Audition Requirements** [Audition Requirements](#)

#### FINANCIAL INFORMATION

[Tuition & Fees](#) / [Financial Aid & Scholarships](#)

#### CAREER / POST-GRADUATION ASSISTANCE

[Career Assistance](#)  
[Alumni Center](#)

**KEY STATISTICS** (college level and above)

**225** music students  
**Music Faculty:** **58** full time, **52** adjunct  
*Scholarship details:* Opportunity Vanderbilt Music Scholarship (average \$69,500; one-third received full tuition)

#### AREAS OF STUDY

Brass • Composition (Performance) • Jazz Studies & Contemporary Media • Music Education • Piano • Strings • Vocal Arts/Opera • Winds & Percussion

#### DEGREE PROGRAMS

[Undergraduate Programs](#)

*Additional details:* Bachelor of Music in: Performance, Composition, Jazz Studies, Integrated Studies, Musical Arts; Master in Education; Master in Business Administration

#### PANDEMIC & SAFETY: SCHOOL POLICIES

[Policies & Procedures for this school](#)

Proof of vaccination required? (✓=Yes ✗=No)  
✗ Students ✗ Faculty ✗ Staff

#### SOCIAL LINKS





# BOSTON CONSERVATORY AT BERKLEE

## Berklee

### WHAT MAKES THIS SCHOOL UNIQUE?

Boston Conservatory at Berklee is internationally recognized as an innovative leader among conservatory programs focused on elevating every aspect of the performing arts. The institution is committed to making all forms of performing arts a more visible and valued dimension of communities here and abroad.

**LOCATION** 8 Fenway  
Boston, MA 02215  
UNITED STATES  
[bostonconservatory.berklee.edu](https://bostonconservatory.berklee.edu)

**ADMISSIONS**  
617-912-9153  
[conservatoryadmissions@berklee.edu](mailto:conservatoryadmissions@berklee.edu)

**Audition Requirements** [Audition Requirements](#)

**FINANCIAL INFORMATION**  
[Tuition & Fees](#) / [Financial Aid & Scholarships](#)



### CAREER / POST-GRADUATION ASSISTANCE

[The Berklee Career Center](#) provides expert guidance, cutting-edge resources, and professional development experiences to help our diverse body of students achieve their career goals.

**KEY STATISTICS** (college level and above)  
**409** music students  
**Music Faculty:** **43** full time, **69** adjunct

### AREAS OF STUDY

Brass • Collaborative Piano • Composition (Performance) • Conducting • Music Therapy • Organ • Piano • Strings • Vocal Arts/Opera • Winds & Percussion • Marimba • Musical Theater • Contemporary Classical Music Performance • Vocal Pedagogy: Classical Voice • Vocal Pedagogy: Musical Theater

### DEGREE PROGRAMS

[Undergraduate Programs](#) / [Graduate Programs](#)

**ADDITIONAL PROGRAMS** (non-matriculating/prep)  
[Summer Programs in Dance, Music, and Theater](#)  
[Extension Programs](#)

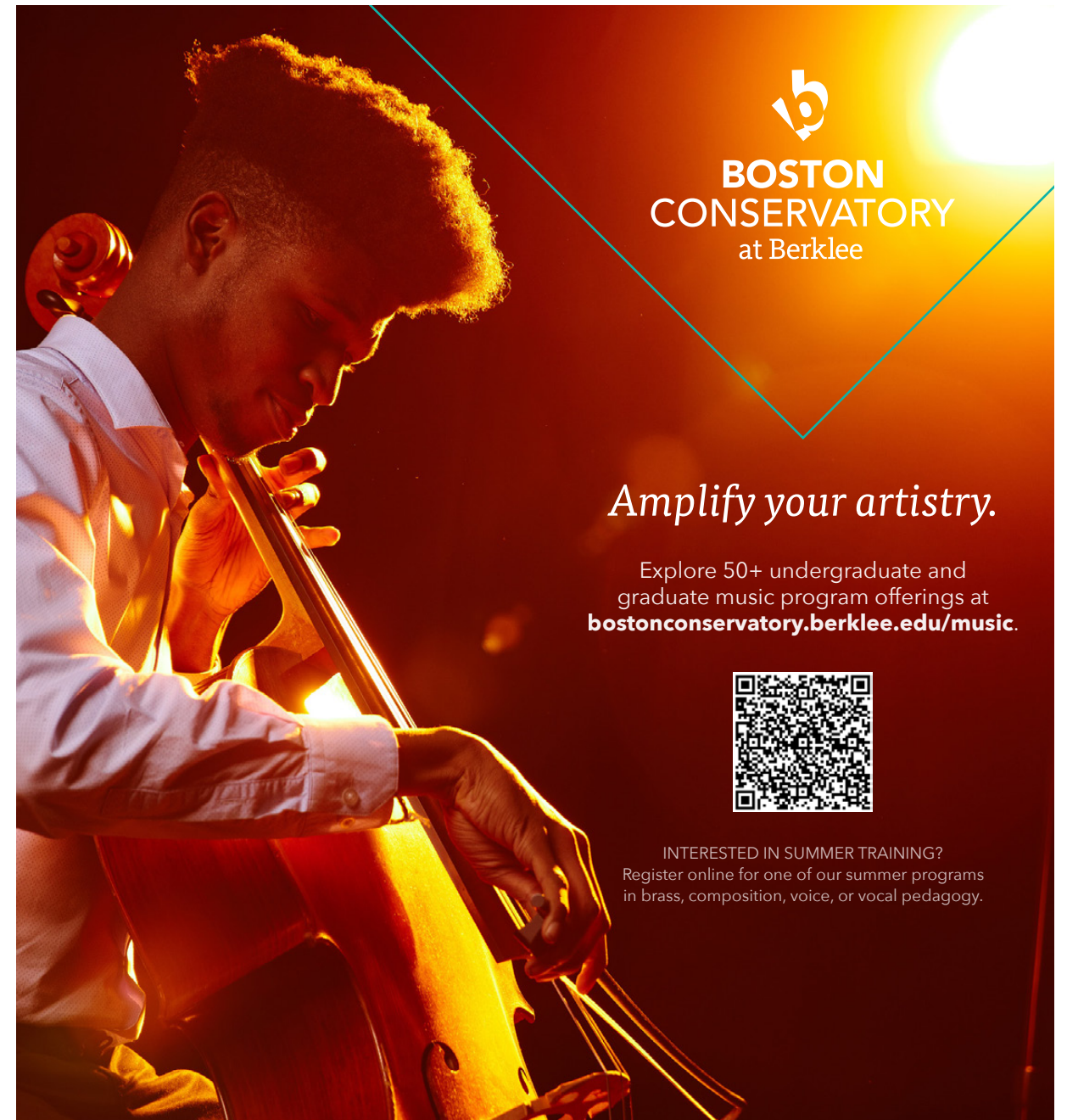
### ONLINE COURSES

[Online courses information](#)  
Additional plans under consideration

### PANDEMIC & SAFETY: SCHOOL POLICIES

[Policies & Procedures for this school](#)  
Proof of vaccination required? (✓=Yes ✗=No)  
✓ Students ✗ Faculty ✗ Staff

**SOCIAL LINKS**    



**BOSTON CONSERVATORY**  
at Berklee

*Amplify your artistry.*

Explore 50+ undergraduate and graduate music program offerings at [bostonconservatory.berklee.edu/music](https://bostonconservatory.berklee.edu/music).



INTERESTED IN SUMMER TRAINING?  
Register online for one of our summer programs in brass, composition, voice, or vocal pedagogy.

## BOSTON UNIVERSITY COLLEGE OF FINE ARTS SCHOOL OF MUSIC

### WHAT MAKES THIS SCHOOL UNIQUE?

The Boston University School of Music is a community of academically and artistically extraordinary musicians within a major research university located in one of the great music capitals of America. We are committed to the highest artistic and professional standards in performance, composition, music education, and musicology.

**LOCATION** 855 Commonwealth Avenue  
Boston, MA 02215  
UNITED STATES  
[www.bu.edu/cfa](http://www.bu.edu/cfa)

**ADMISSIONS** 617-353-3341  
[cfamusic@bu.edu](mailto:cfamusic@bu.edu)

**Audition Requirements** [Audition Requirements](#)

### FINANCIAL INFORMATION

[Tuition & Fees](#) / [Financial Aid & Scholarships](#)

### CAREER / POST-GRADUATION ASSISTANCE

Throughout the year, Boston University School of Music offers a [series of career development workshops taught by alumni and professionals in their field](#).

**KEY STATISTICS** (college level and above)  
**500** music students

**Music Faculty:** **70** full time, **88** adjunct  
*Scholarship details:* Boston University makes a commitment to graduate students at the College of Fine Arts by offering the equivalent of a 50% tuition reduction over the normal BU graduate student tuition rate.

### AREAS OF STUDY

Brass • Collaborative Piano • Composition (Performance) • Conducting • Music Education • Musicology • Piano • Strings • Vocal Arts/Opera • Winds & Percussion

### DEGREE PROGRAMS

[Undergraduate Programs](#) / [Graduate Programs](#)

### ONLINE COURSES

[Online courses information](#)  
76% to 100% will be available as hybrid or online-only courses

### PANDEMIC & SAFETY: SCHOOL POLICIES

[Policies & Procedures for this school](#)  
Proof of vaccination required? (✓=Yes ✗=No)  
✗ Students ✗ Faculty ✗ Staff

**SOCIAL LINKS**   

## THE BUCHMANN-MEHTA SCHOOL OF MUSIC

Tel Aviv University

### WHAT MAKES THIS SCHOOL UNIQUE?

A partnership between the Israel Philharmonic Orchestra and Tel Aviv University, the BSM has an intimate relationship with the IPO's musicians (many on faculty). Students benefit from master classes from the IPO's guest stars. Alumni span Itzhak Perlman, Menahem Pressler, and Lahav Shani. Free tuition plus possible benefits for international students.

### LOCATION

The Buchmann-Mehta School of Music  
Tel Aviv University  
PO Box 39040  
Tel Aviv 6997801  
ISRAEL  
[en-arts.tau.ac.il/Music](http://en-arts.tau.ac.il/Music)

**ADMISSIONS** +972 3-640-9505  
[interprog@tauex.tau.ac.il](mailto:interprog@tauex.tau.ac.il)

**Audition Requirements** [Audition Requirements](#)

### FINANCIAL INFORMATION

[Tuition & Fees](#) / [Financial Aid & Scholarships](#)

### CAREER / POST-GRADUATION ASSISTANCE

[The Colton Internship Program](#), in association with the Israel Philharmonic Orchestra

**KEY STATISTICS** (college level and above)  
**270** music students  
**Music Faculty:** **50** full time, **8** adjunct

### AREAS OF STUDY

Brass • Composition (Performance) • Conducting • Guitar • Music Business • Music Education • Musicology • Music Therapy • Organ • Piano • Strings • Vocal Arts/Opera • Winds & Percussion

### DEGREE PROGRAMS

[Undergraduate Programs](#) / [Graduate Programs](#)  
*Additional details:* Chamber music for pianists (Master of Music)

### PANDEMIC & SAFETY: SCHOOL POLICIES

Proof of vaccination required? (✓=Yes ✗=No)  
✗ Students ✗ Faculty ✗ Staff

**SOCIAL LINKS**   



## SARAH AND ERNEST BUTLER SCHOOL OF MUSIC

### The University of Texas at Austin

#### WHAT MAKES THIS SCHOOL UNIQUE?

Located in one of our nation's most musical cities, the Butler School of Music at The University of Texas at Austin offers comprehensive undergraduate and graduate programs designed to prepare artists, thinkers, makers, and teachers to make profound contributions to the future of music.

**LOCATION** 2406 Robert Dedman Drive  
Stop E3100  
Austin, TX 78712-1555  
UNITED STATES  
[www.music.utexas.edu](http://www.music.utexas.edu)

**ADMISSIONS** 512-471-7764  
[uga@mail.music.utexas.edu](mailto:uga@mail.music.utexas.edu)

**Audition Requirements** [Audition Requirements](#)

#### FINANCIAL INFORMATION

[Tuition & Fees](#) / [Financial Aid & Scholarships](#)

#### CAREER / POST-GRADUATION ASSISTANCE

[Fine Arts Career Services](#) offers resources tailored to the College of Fine Arts undergraduate and graduate student body. The dedicated team of fine arts career advisors works extensively with students to prepare them for an increasingly competitive arts industry. Graduation isn't the end of a student's relationship with FACS. The office remains accessible to alumni of the college for life. Career advising and planning services are also available from the university's [Center for Strategic Advising & Career Counseling](#).

#### KEY STATISTICS (college level and above)

**650** music students  
**Music Faculty:** **85** full time, **10** adjunct

#### AREAS OF STUDY

Brass • Collaborative Piano • Composition (Performance) • Conducting • Guitar • Jazz Studies & Contemporary Media • Music Education • Musicology • Organ • Piano • Strings • Vocal Arts/Opera • Winds & Percussion • Chamber Music • Ethnomusicology • Literature and Pedagogy • Opera Coaching • Opera Directing

#### DEGREE PROGRAMS

[Undergraduate Programs](#) / [Graduate Programs](#)

#### PANDEMIC & SAFETY: SCHOOL POLICIES

[Policies & Procedures for this school](#)  
Proof of vaccination required? (✓=Yes ✗=No)  
✗ Students ✗ Faculty ✗ Staff

#### SOCIAL LINKS



## BUTLER UNIVERSITY SCHOOL OF MUSIC

#### WHAT MAKES THIS SCHOOL UNIQUE?

More. This simple word describes all the opportunities you'll have in Butler University's School of Music. Many students double major, both within the arts and out, bringing an added layer of knowledge, creativity, and experience that makes them truly well-rounded musicians and music educators.

#### LOCATION

4600 Sunset Avenue  
Indianapolis, IN 46208  
UNITED STATES  
[www.butler.edu/jordan-arts/undergraduate-programs/music](http://www.butler.edu/jordan-arts/undergraduate-programs/music)

**ADMISSIONS** 317-940-9656  
[jcaadmission@butler.edu](mailto:jcaadmission@butler.edu)

**Audition Requirements** [Audition Requirements](#)

#### FINANCIAL INFORMATION

[Tuition & Fees](#) / [Financial Aid & Scholarships](#)

#### CAREER / POST-GRADUATION ASSISTANCE

[Career Assistance](#)

#### KEY STATISTICS (college level and above)

**200** music students  
**Music Faculty:** **28** full time, **31** adjunct

#### AREAS OF STUDY

Arts Leadership • Brass • Collaborative Piano • Composition (Performance) • Conducting • Guitar • Jazz Studies & Contemporary Media • Music Education • Musicology • Music Therapy • Piano • Strings • Vocal Arts/Opera • Winds & Percussion • Arts Administration

#### DEGREE PROGRAMS

[Undergraduate Programs](#) / [Graduate Programs](#)  
*Additional details:* BA in Music with double major outside of music; Music plus Engineering Dual Degree Program

#### ONLINE COURSES

[Online courses information](#)  
Additional plans under consideration

#### PANDEMIC & SAFETY: SCHOOL POLICIES

[Policies & Procedures for this school](#)  
Proof of vaccination required? (✓=Yes ✗=No)  
✗ Students ✗ Faculty ✗ Staff

#### SOCIAL LINKS



# Study Music

in a place Like Nowhere Else

Applications open for  
**2024 entry**

Apply by **1 December 2023**  
*Keyboard applications by 2 October 2023*

World Top Ten for performing arts\*

Award-winning teaching staff

One-to-one tuition

Be part of an international student  
community

Side-by-side opportunities with  
world-class orchestras

Collaborate with acting, dance, film  
and production students

**rca.ac.uk/music**

\*QS World University Rankings 2023



Royal Conservatoire  
of Scotland

## CARNEGIE MELLON UNIVERSITY SCHOOL OF MUSIC

### WHAT MAKES THIS SCHOOL UNIQUE?

The School of Music combines the strengths of a conservatory with those of a global research university. Students are a part of a diverse fine arts community on campus and in the city of Pittsburgh

**LOCATION** 5000 Forbes Avenue  
Pittsburgh, PA 15213  
UNITED STATES  
[music.cmu.edu](http://music.cmu.edu)

**ADMISSIONS**  
412-268-4118  
[music-admissions@andrew.cmu.edu](mailto:music-admissions@andrew.cmu.edu)

**Audition Requirements** [Audition Requirements](#)

**FINANCIAL INFORMATION**  
[Tuition & Fees](#) / [Financial Aid & Scholarships](#)

### CAREER / POST-GRADUATION ASSISTANCE

Our distinguished alumni populate the ranks of the world's most prestigious orchestras, opera companies, and faculties including: the New York Philharmonic, Chicago Symphony Orchestra, The Metropolitan Opera, Harvard University, Prague Philharmonia, Oberlin College & Conservatory, Boston Pops, BBC Orchestras, Lyric Opera of Chicago, and many more.

**KEY STATISTICS** (college level and above)  
**350** music students  
**Music Faculty: 35** full time, **51** adjunct

### AREAS OF STUDY

Brass • Collaborative Piano • Composition (Performance) • Conducting • Guitar • Media studies (including audio and video production) • Music Education • Piano • Strings • Vocal Arts/Opera • Winds & Percussion

### DEGREE PROGRAMS

[Undergraduate Programs](#) / [Graduate Programs](#)  
*Additional details:* Interdisciplinary degrees (BXA): Electronic Music; Music and Technology; Music Entrepreneurship

### PANDEMIC & SAFETY: SCHOOL POLICIES

Proof of vaccination required? (✓=Yes ✗=No)  
✓ Students ✗ Faculty ✗ Staff

**SOCIAL LINKS**    



## CHOPIN UNIVERSITY OF MUSIC

### WHAT MAKES THIS SCHOOL UNIQUE?

The Chopin University of Music is one of the oldest and largest music universities in Europe, constantly developing cooperation with the largest music centers in Poland and in the world.

**LOCATION** Okólnik 2  
00-368 Warsaw  
POLAND  
[www.chopin.edu.pl](http://www.chopin.edu.pl)

**ADMISSIONS** +48 22 278 92 58  
[dzialnauczania@chopin.edu.pl](mailto:dzialnauczania@chopin.edu.pl)

### FINANCIAL INFORMATION

[Tuition & Fees](#)

### CAREER / POST-GRADUATION ASSISTANCE

[Career Assistance](#)

### KEY STATISTICS (college level and above)

**2,000** music students

**Music Faculty: 200** full time, **200** adjunct

### AREAS OF STUDY

Brass • Collaborative Piano • Composition (Performance) • Conducting • Early Music • Guitar • Jazz Studies & Contemporary Media • Media studies (including audio and video production) • Music Education • Organ • Piano • Strings • Vocal Arts/Opera • Winds & Percussion • Accordion • World Music • Choral Studies and Rhythmics • Sound Engineering • Dance • Church Music

### ADDITIONAL PROGRAMS (non-matriculating/prep)

[Erasmus+](#)  
[Chopin–Górecki Festival and music course](#)

### PANDEMIC & SAFETY: SCHOOL POLICIES

[Policies & Procedures for this school](#)

Proof of vaccination required? (✓=Yes ✗=No)

✗ Students ✗ Faculty ✗ Staff

**SOCIAL LINKS**     

## CLEVELAND INSTITUTE OF MUSIC

### WHAT MAKES THIS SCHOOL UNIQUE?

CIM is an independent conservatory known for superior orchestral, chamber music, composition, piano, and voice programs at both the undergraduate and graduate levels. Its world-renowned faculty—many of whom are members of The Cleveland Orchestra—are eminent performers and pedagogues who cultivate life-long mentoring relationships with their students.

**LOCATION** 11021 East Boulevard  
Cleveland, OH 44106  
UNITED STATES  
[www.cim.edu](http://www.cim.edu)

**ADMISSIONS** 216-795-3107  
[admission@cim.edu](mailto:admission@cim.edu)

**Audition Requirements** [Audition Requirements](#)

### FINANCIAL INFORMATION

[Tuition & Fees](#) / [Financial Aid & Scholarships](#)

### CAREER / POST-GRADUATION ASSISTANCE

CIM's education focuses on high-level performance artistry coupled with the practical and essential skills necessary for a seamless transition into a professional career. For much of its nearly 100-year history, CIM's individual faculty members have engaged in career-focused coaching of students and alumni.

### KEY STATISTICS (college level and above)

**350** music students

**Music Faculty: 30** full time, **150** adjunct

### AREAS OF STUDY

Brass • Collaborative Piano • Composition (Performance) • Conducting • Guitar • Organ • Piano • Strings • Vocal Arts/Opera • Winds & Percussion

### DEGREE PROGRAMS

[Undergraduate Programs](#) / [Graduate Programs](#)  
*Additional details:* Eurhythmics (as an undergraduate double major only); Suzuki Pedagogy (master's program only); Minor and dual degree programs offered in association with Case Western Reserve University

### ADDITIONAL PROGRAMS (non-matriculating/prep)

[Joint Music Program with Case Western Reserve University](#)

### PANDEMIC & SAFETY: SCHOOL POLICIES

[Policies & Procedures for this school](#)

Proof of vaccination required? (✓=Yes ✗=No)

✗ Students ✗ Faculty ✗ Staff

**SOCIAL LINKS**    

# COLBURN CONSERVATORY OF MUSIC

## WHAT MAKES THIS SCHOOL UNIQUE?

Students receive full-tuition scholarships, room, and board. The Colburn Orchestra emulates a professional orchestra experience with distinguished guest conductors and Music Director Yehuda Gilad. Students perform alongside faculty and guest artists as part of the Colburn Chamber Music Society. Career development and wellness programs support all areas of student well-being.

**LOCATION** 200 South Grand Avenue  
Los Angeles, CA, 90012  
UNITED STATES  
[www.colburnschool.edu](http://www.colburnschool.edu)

**ADMISSIONS** 213-621-4534  
[admissions@colburnschool.edu](mailto:admissions@colburnschool.edu)

**Audition Requirements** [Audition Requirements](#)

## FINANCIAL INFORMATION

[Tuition & Fees](#) / [Financial Aid & Scholarships](#)

## CAREER / POST-GRADUATION ASSISTANCE

The Colburn School offers a range of resources to help students and alumni plan and build their professional careers. All Conservatory students take two essential classes: the Healthy Musician, which teaches maintenance for professional health and the prevention of performance injuries, and the Working Musician, which offers courses designed to help them manage their careers as musicians. Undergrad students also take Teaching Musician, for pedagogy training. [The Center for Innovation and Community Impact](#)



## KEY STATISTICS (college level and above)

135 music students

**Music Faculty:** 15 full time, 26 adjunct

## AREAS OF STUDY

Brass • Conducting • Piano • Strings • Winds & Percussion

## DEGREE PROGRAMS

[Undergraduate Programs](#) / [Graduate Programs](#)  
*Additional details:* Bachelor of Music in Performance; Master of Music in Performance; Master of Music in Chamber Music; Undergraduate Performance Diploma; Undergraduate Performance Diploma with Conducting Emphasis; Graduate Artist Diploma with Emphasis in Performance, Chamber Music or Conducting; Graduate Professional Studies Certificate

## ADDITIONAL PROGRAMS (non-matriculating/prep)

[Music Academy for pre-college training](#)  
[Community School of Performing Arts](#)  
[Trudl Zipper Dance Institute](#)

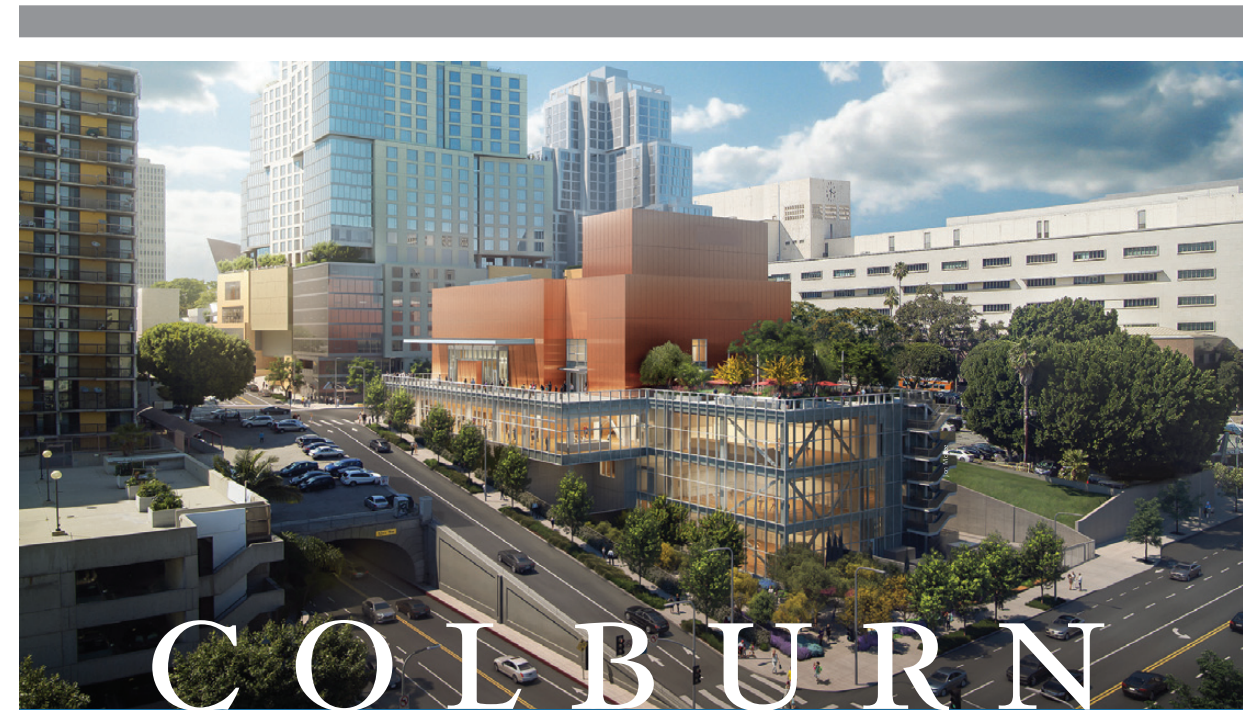
## PANDEMIC & SAFETY: SCHOOL POLICIES

[Policies & Procedures for this school](#)

Proof of vaccination required? (✓=Yes ✗=No)

✓ Students ✓ Faculty ✓ Staff

## SOCIAL LINKS



# COLBURN

World-renowned faculty, outstanding performance opportunities, and unparalleled financial support in the heart of LA.

## Welcoming New Faculty for 2023



Aaron Tindall  
Tuba



Eugene Izotov  
Oboe

## College Programs

All Conservatory students receive complete scholarship packages covering tuition, room, and board.

## Pre-College Study

The Music Academy brings exceptional students ages 14–18 to Colburn to prepare for study at the Colburn Conservatory and other top music programs worldwide.

[colburnschool.edu](http://colburnschool.edu)



Above: The Colburn School campus expansion, opening in 2026  
Frank Gehry, architect; Yasuhisa Toyota, acoustician



## THE COLLEGE OF PERFORMING ARTS

### The New School

#### WHAT MAKES THIS SCHOOL UNIQUE?

The College of Performing Arts brings together Mannes School of Music, the iconic 100-year-old conservatory; the legendary School of Jazz and Contemporary Music; and the ground-breaking School of Drama to form a progressive, creative center at the heart of The New School.

#### LOCATION

55 West 13th Street  
New York, NY 10011  
UNITED STATES  
[www.newschool.edu/performing-arts](http://www.newschool.edu/performing-arts)

**ADMISSIONS** 212-580-0210 x4862  
[performingarts@newschool.edu](mailto:performingarts@newschool.edu)

**Audition Requirements** [Audition Requirements](#)

**FINANCIAL INFORMATION**  
[Tuition & Fees](#) / [Financial Aid & Scholarships](#)

**CAREER / POST-GRADUATION ASSISTANCE**  
At the College of Performing Arts, students receive exceptional preparation for careers in music by engaging in a highly progressive curriculum to develop their unique artistic voice and explore how to use that voice to engage with the world around them, in and through the arts. Students benefit

## THE COLLEGE OF PERFORMING ARTS (cont'd)

### The New School

from the mentorship and guidance of world-class faculty and supportive administrative staff. The New School's Career Services office helps students build professional networks by fostering connections with alumni, faculty, and employers. It offers an online job board, interview and portfolio workshops, networking opportunities, career fairs, internship support, and other resources.

**KEY STATISTICS** (college level and above)  
**660** music students  
**Music Faculty:** **15** full time, **475** adjunct

#### AREAS OF STUDY

Arts Leadership • Brass • Collaborative Piano  
• Composition (Performance) • Conducting • Guitar  
• Jazz Studies & Contemporary Media • Music Business • Musicology • Piano • Strings • Vocal Arts/Opera • Winds & Percussion

#### DEGREE PROGRAMS

[Undergraduate Programs](#) / [Graduate Programs](#)

#### PANDEMIC & SAFETY: SCHOOL POLICIES

[Policies & Procedures for this school](#)

Proof of vaccination required? (✓=Yes ✗=No)  
✗ Students ✗ Faculty ✗ Staff

**SOCIAL LINKS**  



**2024 Music Audition Dates**  
January 20  
February 10  
March 16

**DISCOVER Music at Mercer**  
**Townsend School of Music**  
Committed to your goal of becoming a creative and successful musical artist.

**music.mercer.edu**  
Scan the code for degree, scholarship, and audition information.



**MERCER UNIVERSITY**  
SCHOOL OF MUSIC



**The Shepherd School of Music at Rice**

Learn more



**music.rice.edu**

*Unleashing Potential*

A conservatory experience paired with the academic excellence of a renowned university in Houston, Texas



## COLUMBIA UNIVERSITY, TEACHERS COLLEGE

### WHAT MAKES THIS SCHOOL UNIQUE?

Teachers College, Columbia University is the first and largest graduate school of education in the United States and is also perennially ranked among the nation's best. We serve current and aspiring educators who want to truly make a difference in the world.

### LOCATION

525 West 120th Street  
New York, NY 10027  
UNITED STATES  
[musiconlinehybrid.tc.columbia.edu/](https://musiconlinehybrid.tc.columbia.edu/)

### ADMISSIONS

877-238-6628  
[musiconlinehybrid@tc.columbia.edu](mailto:musiconlinehybrid@tc.columbia.edu)

### FINANCIAL INFORMATION

[Tuition & Fees](#) / [Financial Aid & Scholarships](#)

### CAREER / POST-GRADUATION ASSISTANCE

Teachers College offers extensive career services and professional development through [TC NEXT](#). These holistic services include general career planning, job hunting help, and workshops that empower you to build your personal brand and shape your professional trajectory.

### KEY STATISTICS (college level and above)

**235** music students  
**Music Faculty:** 6 full time, 6 adjunct  
*Scholarship details:* The scholarship amount is \$11,940 based on the 2023-24 tuition.

### AREAS OF STUDY

Media studies (including audio and video production) • Music Business • Music Education

### DEGREE PROGRAMS

[Graduate Programs](#)  
*Additional details:* Music Education (Summer Cohort)

### ONLINE COURSES

[Online courses information](#)

### PANDEMIC & SAFETY: SCHOOL POLICIES

[Policies & Procedures for this school](#)  
Proof of vaccination required? (✓=Yes ✗=No)  
✓ Students ✓ Faculty ✓ Staff

### SOCIAL LINKS



## AARON COPLAND SCHOOL OF MUSIC

### CUNY Queens College

### WHAT MAKES THIS SCHOOL UNIQUE?

Queens College is a Liberal Arts college, boasting excellent programs in many areas, and the School of Music is the jewel in the crown. Students at the Aaron Copland School of Music get a world class education at the center of the cultural universe for an impressively affordable tuition.

### LOCATION

Aaron Copland School of Music, Room 203  
Queens College, CUNY  
65-30 Kissena Boulevard  
Queens, NY 11367-1597  
UNITED STATES  
[www.qc.cuny.edu/academics/music/](http://www.qc.cuny.edu/academics/music/)

**ADMISSIONS** 718-997-3800  
[Thomas.Lee1@qc.cuny.edu](mailto:Thomas.Lee1@qc.cuny.edu)

### Audition Requirements

Auditions are offered February and March of each year. [Audition information](#)

### FINANCIAL INFORMATION

[Tuition & Fees](#) / [Financial Aid & Scholarships](#)

### CAREER / POST-GRADUATION ASSISTANCE

ACSM has an excellent career placement record for the music education graduates (99%). We also offer Business of Music and Music Career Development courses to provide critical industry knowledge to our students.

### KEY STATISTICS (college level and above)

**450** music students  
**Music Faculty:** 26 full time, 70 adjunct  
**50** scholarships awarded

### AREAS OF STUDY

Brass • Composition (Performance) • Conducting • Early Music • Guitar • Jazz Studies & Contemporary Media • Media studies (including audio and video production) • Music Business • Music Education • Musicology • Music Therapy • Organ • Piano • Strings • Vocal Arts/Opera • Winds & Percussion

### DEGREE PROGRAMS

[Undergraduate Programs:](#) BM in Music, Music Education; BA in General Music; BM in Music Performance  
[Graduate Programs:](#) MM, Classical Performance; MA, Musicology; MA, Composition; MA, Music Theory; MS, Music Education; MM, Jazz Performance; MM, Jazz Composition  
*Additional details:* Post-Baccalaureate Certification (Initial Certification), Music Education; Advanced Certificate (Pre-Graduate), Music Performance; Advanced Diploma, Music Performance (Post-Masters); Advanced Diploma, Chamber Music (Post-Masters)

### ONLINE COURSES

Up to 25% will be available as hybrid or online-only courses

### PANDEMIC & SAFETY: SCHOOL POLICIES

Proof of vaccination required? (✓=Yes ✗=No)  
✗ Students ✗ Faculty ✗ Staff

### SOCIAL LINKS





## THE CRANE SCHOOL OF MUSIC

### SUNY Potsdam

#### WHAT MAKES THIS SCHOOL UNIQUE?

Crane is an undergraduate-focused music school with attentive faculty. We are part of SUNY Potsdam, an arts-centric liberal arts college, with 500 music majors and where over 30% of students major in the arts. At Crane, students can choose from a wide variety of programs and majors.

**LOCATION** 44 Pierrepont Avenue  
Potsdam, NY 13676  
UNITED STATES  
[www.potsdam.edu/crane](http://www.potsdam.edu/crane)

**ADMISSIONS** 315-267-2812  
[auditions@potsdam.edu](mailto:auditions@potsdam.edu)

**Audition Requirements** [Audition Requirements](#)

#### FINANCIAL INFORMATION

[Tuition & Fees](#) / [Financial Aid & Scholarships](#)

#### CAREER / POST-GRADUATION ASSISTANCE

Students in each major work closely with faculty and staff at Crane and SUNY Potsdam's [Career Services Office](#) in formulating their post-graduation plans. Crane alumni includes thousands of educators, performers, composers, researchers, leaders in music industry, and musicians of renown, a network of graduates who can be found throughout North America and around the world.

#### KEY STATISTICS (college level and above)

**500** music students  
**Music Faculty:** **74** full time, **18** adjunct

#### AREAS OF STUDY

Arts Leadership • Brass • Composition (Performance)  
• Guitar • Music Business • Music Education  
• Musicology • Piano • Strings • Vocal Arts/Opera  
• Winds & Percussion

#### DEGREE PROGRAMS

[Undergraduate Programs](#) / [Graduate Programs](#)

#### ONLINE COURSES

[Online courses information](#)  
Up to 25% will be available as hybrid or online-only courses

#### PANDEMIC & SAFETY: SCHOOL POLICIES

[Policies & Procedures for this school](#)  
Proof of vaccination required? (✓=Yes ✗=No)  
✗ Students ✗ Faculty ✗ Staff

**SOCIAL LINKS**  

## CURTIS INSTITUTE OF MUSIC

#### WHAT MAKES THIS SCHOOL UNIQUE?

Curtis's celebrated faculty includes a high proportion of actively performing musicians whose experience provides students with a direct link to life as a professional musician today. With a student body of about 160 and over 100 faculty members, all students receive highly personalized attention.

**LOCATION** 1726 Locust Street  
Philadelphia, PA 19103  
UNITED STATES  
[www.curtis.edu](http://www.curtis.edu)

**ADMISSIONS** 215-717-3172  
[admissions@curtis.edu](mailto:admissions@curtis.edu)

**Audition Requirements** [Audition Requirements](#)  
Audition requirements vary by department.

#### FINANCIAL INFORMATION

[Tuition & Fees](#) / [Financial Aid & Scholarships](#)

#### CAREER / POST-GRADUATION ASSISTANCE

Curtis offers several professional bridge programs designed for young artists beginning their professional careers. These include fellowships for conductors and string quartets. A post-graduate [Community Artist Fellowship](#) program brings art access and education to underserved communities, while providing training in teaching, interactive performance, and strategic planning. Alumni resources include an alumni e-mail address to maintain a visible presence with Curtis.

#### KEY STATISTICS (college level and above)

**162** music students  
**Music Faculty:** **3** full time, **115** adjunct  
**162** scholarships awarded  
*Scholarship details:* approximately \$48,557 for undergraduate students and \$60,291 for graduate students

#### AREAS OF STUDY

Brass • Composition (Performance) • Conducting  
• Guitar • Organ • Piano • Strings • Vocal Arts/Opera  
• Winds & Percussion

#### DEGREE PROGRAMS

[Undergraduate Programs](#) / [Graduate Programs](#)  
*Additional details:* [Conducting Fellowship](#);  
[Community Artist Fellowships](#)

#### ADDITIONAL PROGRAMS (non-matriculating/prep)

[Summer Programs](#)  
[String Quartet Program](#)

#### ONLINE COURSES

[Online courses information](#)  
Up to 25% will be available as hybrid or online-only courses

#### PANDEMIC & SAFETY: SCHOOL POLICIES

[Policies & Procedures for this school](#)  
Proof of vaccination required? (✓=Yes ✗=No)  
✓ Students ✓ Faculty ✓ Staff

**SOCIAL LINKS**     

## DEPAUL UNIVERSITY SCHOOL OF MUSIC

### DePaul University

#### WHAT MAKES THIS SCHOOL UNIQUE?

The DePaul University School of Music offers conservatory style, performance-based study within a large university in Chicago, a destination city for world-class arts. Students benefit from individualized study and rehearsal at the highest level among a supportive community of individuals striving to be their best.

**LOCATION** 804 West Belden Avenue  
Chicago, IL 60614  
UNITED STATES  
[music.depaul.edu](http://music.depaul.edu)

**ADMISSIONS** 773-325-7444  
[musicadmissions@depaul.edu](mailto:musicadmissions@depaul.edu)

**Audition Requirements** [Audition Requirements](#)  
Audition requirements vary slightly depending upon the degree an applicant is seeking. Specific information can be found using the link above.

**FINANCIAL INFORMATION**  
[Tuition & Fees](#) / [Financial Aid & Scholarships](#)

#### CAREER / POST-GRADUATION ASSISTANCE

[Career Services](#) provides resources for School of Music students and alumni including assistance with freelance opportunities; 24-online access to opportunities in music and arts administration; career workshops, résumé, cover letter and bio writing assistance; job database; and an Alumni Sharing Knowledge Network.

**KEY STATISTICS** (college level and above)  
**410** music students  
**Music Faculty: 30** full time, **125** adjunct

#### AREAS OF STUDY

Arts Leadership • Brass • Collaborative Piano • Composition (Performance) • Guitar • Jazz Studies & Contemporary Media • Media studies (including audio and video production) • Music Business • Music Education • Music Therapy • Organ • Piano • Strings • Vocal Arts/Opera • Winds & Percussion

#### DEGREE PROGRAMS

[Undergraduate Programs](#) / [Graduate Programs](#)  
*Additional details:* BA in Music

#### PANDEMIC & SAFETY: SCHOOL POLICIES

Proof of vaccination required? (✓=Yes ✗=No)  
✗ Students ✗ Faculty ✗ Staff

**SOCIAL LINKS**     

## EAST CAROLINA UNIVERSITY SCHOOL OF MUSIC

### East Carolina University

#### WHAT MAKES THIS SCHOOL UNIQUE?

ECU School of Music programs include the BM, Music Education; BM (concentrations in music therapy, performance and theory-composition); CAPS (Advanced Performance Studies Certificate); and Master of Music. Students benefit from a low professor-to-student ratio, exceptional extra-curricular opportunities, and a supportive community within the context of the large university experience.

**LOCATION** A.J. Fletcher Music Center  
East Carolina University  
Greenville, NC 27858-4353  
UNITED STATES  
[music.ecu.edu](http://music.ecu.edu)

**ADMISSIONS** 252-328-4281  
[musicadmissions@ecu.edu](mailto:musicadmissions@ecu.edu)

**Audition Requirements** [Audition Requirements](#)

**FINANCIAL INFORMATION**  
[Tuition & Fees](#) / [Financial Aid & Scholarships](#)

**CAREER / POST-GRADUATION ASSISTANCE**  
[Career Assistance](#)

**KEY STATISTICS** (college level and above)  
**250** music students  
**Music Faculty: 39** full time, **15** adjunct

#### AREAS OF STUDY

Brass • Collaborative Piano • Composition (Performance) • Conducting • Guitar • Jazz Studies & Contemporary Media • Music Education • Musicology • Music Therapy • Organ • Piano • Strings • Vocal Arts/Opera • Winds & Percussion

#### DEGREE PROGRAMS

[Bachelor of Music Degrees](#); [Music Education Degrees](#); [Master of Music Degrees](#); [Master of Music Degrees](#)  
*Additional details:* [Graduate Certificate Programs](#)

**ADDITIONAL PROGRAMS** (non-matriculating/prep)  
[Four Seasons Chamber Music Festival](#)  
[The Billy Taylor Jazz Festival](#)  
[North Carolina NewMusic Initiative](#)

#### ONLINE COURSES

[Online courses information](#)  
Up to 25% will be available as hybrid or online-only courses

#### PANDEMIC & SAFETY: SCHOOL POLICIES

Proof of vaccination required? (✓=Yes ✗=No)  
✗ Students ✗ Faculty ✗ Staff

**SOCIAL LINKS**   



# EASTMAN SCHOOL OF MUSIC

University of Rochester



EASTMAN  
SCHOOL OF MUSIC  
UNIVERSITY of ROCHESTER

The Eastman School of Music strives: to create a musical community that is rich with cultural, social, and intellectual diversity; to give the student an intensive professional education in his or her musical discipline; to prepare each student with a solid foundation in music and an expansive education in the liberal arts; to develop an informed and inquiring mind that enables each graduate to engage the fundamental issues of his or her art and to become an effective cultural leader in society.

## WHAT MAKES THIS SCHOOL UNIQUE?

Eastman is dedicated to the highest levels of artistry and scholarship and to the broad education of young musicians within the context of a university. Our students enjoy a challenging but nurturing environment that focuses on artistic excellence while encouraging the pursuit of individual paths and interests.

**LOCATION** 26 Gibbs Street  
Rochester, NY 14604  
UNITED STATES  
[www.esm.rochester.edu](http://www.esm.rochester.edu)

**ADMISSIONS** 585-274-1060  
[admissions@esm.rochester.edu](mailto:admissions@esm.rochester.edu)

**Audition Requirements** [Audition Requirements](#)

## FINANCIAL INFORMATION

[Tuition & Fees](#) / [Financial Aid & Scholarships](#)

## CAREER / POST-GRADUATION ASSISTANCE

[Career Assistance](#)

## KEY STATISTICS (college level and above)

900 music students

**Music Faculty:** 135 full time, 50 adjunct

## AREAS OF STUDY

Arts Leadership • Brass • Collaborative Piano  
• Composition (Performance) • Conducting • Early Music • Guitar • Jazz Studies & Contemporary Media • Media studies (including audio and video production) • Music Business • Music Education • Musicology • Music Therapy • Organ • Piano • Strings • Vocal Arts/Opera • Winds & Percussion

## DEGREE PROGRAMS

[Undergraduate Programs](#) / [Graduate Programs](#)

## ADDITIONAL PROGRAMS (non-matriculating/prep)

[Institute for Music Leadership](#)

## ONLINE COURSES

[Online courses information](#)

## PANDEMIC & SAFETY: SCHOOL POLICIES

[Policies & Procedures for this school](#)

Proof of vaccination required? (✓=Yes ✗=No)

✗ Students ✗ Faculty ✗ Staff

## SOCIAL LINKS



PURSUE  
*Your*  
PASSIONS



EASTMAN  
SCHOOL OF MUSIC  
UNIVERSITY of ROCHESTER

For application information visit [esm.rochester.edu/admissions](http://esm.rochester.edu/admissions)

## HANNS EISLER SCHOOL OF MUSIC BERLIN

### WHAT MAKES THIS SCHOOL UNIQUE?

Musical excellence is our leitmotif and only the highest standards prevail. Exceptional musical personalities guarantee the quality of our musical education. We promote talent in its full-scale development, from the attainment of the finest technical precision to being ready to perform on stage.

### LOCATION

Hochschule für Musik Hanns Eisler Berlin  
Charlottenstr. 55  
D-10117 Berlin  
GERMANY  
[www.hfm-berlin.de/en](http://www.hfm-berlin.de/en)

**ADMISSIONS** +49 (0)30 688305-830  
[studium@adm.hfm-berlin.de](mailto:studium@adm.hfm-berlin.de)

**Audition Requirements** [Audition Requirements](#)

### FINANCIAL INFORMATION

[Tuition & Fees](#) / [Financial Aid & Scholarships](#)

### CAREER / POST-GRADUATION ASSISTANCE

[Eisleriana Artists Agency](#) for the trained students and graduates of one of the best music academies in Europe.

### KEY STATISTICS (college level and above)

**500** music students  
**Music Faculty:** 90 full time, 249 adjunct  
**80** scholarships awarded

### AREAS OF STUDY

Brass • Collaborative Piano • Composition (Performance) • Conducting • Guitar • Jazz Studies & Contemporary Media • Piano • Strings • Vocal Arts/Opera • Winds & Percussion • Stage Direction (Opera & Music Theatre) • Chamber Music • Répétiteur • Lied Interpretation for Pianists • Historical and Contemporary Compositional Technique • Electroacoustic Music • Production Dramaturgy for Music Theatre

### DEGREE PROGRAMS

[Undergraduate Programs](#) / [Graduate Programs](#)

### ADDITIONAL PROGRAMS (non-matriculating/prep)

[Competitions](#)

### PANDEMIC & SAFETY: SCHOOL POLICIES

Proof of vaccination required? (✓=Yes ✗=No)  
✗ Students ✗ Faculty ✗ Staff

### SOCIAL LINKS



## FLORIDA STATE UNIVERSITY COLLEGE OF MUSIC

### Florida State University

### WHAT MAKES THIS SCHOOL UNIQUE?

FSU is home to one of the largest and most diverse music programs in the country, offering 25 degree programs at the undergraduate level alone. Our students participate in nearly 50 ensembles and perform in more than 500 concerts each year. Our graduates are highly successful beyond the classroom.

### LOCATION

122 North Copeland Street  
Tallahassee, FL 32306  
UNITED STATES  
[music.fsu.edu/](http://music.fsu.edu/)

### ADMISSIONS

850-644-6102  
[musicadmissions@fsu.edu](mailto:musicadmissions@fsu.edu)

**Audition Requirements** [Audition Requirements](#)

### FINANCIAL INFORMATION

[Tuition & Fees](#) / [Financial Aid & Scholarships](#)

### CAREER / POST-GRADUATION ASSISTANCE

Faculty mentors take an active role in placing and connecting their students to career opportunities, and a Career Liaison from the FSU Career Center works directly with the College of Music. The Allen Music Library sponsors workshops on résumé writing, and career development is a major focus of Music Entrepreneurship classes. Many programs include an internship component that helps lead directly to the first job. Music Education and Music Therapy programs have 100% job placement rate.

### KEY STATISTICS (college level and above)

**1,050** music students  
**Music Faculty:** 88 full time, 6 adjunct  
*Scholarship details:* \$500 to \$3,000

### AREAS OF STUDY

Arts Leadership • Brass • Collaborative Piano • Composition (Performance) • Conducting • Guitar • Media studies (including audio and video production) • Music Business • Music Education • Musicology • Music Therapy • Organ • Piano • Strings • Vocal Arts/Opera • Winds & Percussion • Piano Technology • Piano Pedagogy • Sacred Music • Commercial Music • Music Theory • Opera Directing/Coaching,

### DEGREE PROGRAMS

[Undergraduate Programs](#) / [Graduate Programs](#)

*Additional details:* Summer Master of Music Education

### PANDEMIC & SAFETY: SCHOOL POLICIES

Proof of vaccination required? (✓=Yes ✗=No)  
✗ Students ✗ Faculty ✗ Staff

### SOCIAL LINKS





## THE FREDONIA SCHOOL OF MUSIC

State University of New York at Fredonia

### WHAT MAKES THIS SCHOOL UNIQUE?

Fredonia is leading the next generation of music professionals. Our Music Education program boasts an incredible 100% job placement rate after graduation, and our faculty and alumni are GRAMMY-award winning year after year. Choose the power of Fredonia and turn your passion into your profession.

**LOCATION** 280 Central Avenue  
Fredonia, NY 14063  
UNITED STATES  
[www.fredonia.edu/music](http://www.fredonia.edu/music)

**ADMISSIONS** 716-673-3151  
[music@fredonia.edu](mailto:music@fredonia.edu)

**Audition Requirements** [Audition Requirements](#)

### FINANCIAL INFORMATION

[Tuition & Fees](#) / [Financial Aid & Scholarships](#)

### CAREER / POST-GRADUATION ASSISTANCE

[Fredonia Career Development Office](#)

### KEY STATISTICS (college level and above)

**521** music students

**Music Faculty:** 60 full time, 41 adjunct

### AREAS OF STUDY

Arts Leadership • Brass • Collaborative Piano  
• Composition (Performance) • Conducting • Guitar  
• Jazz Studies & Contemporary Media • Media studies (including audio and video production)  
• Music Business • Music Education • Musicology  
• Music Therapy • Organ • Piano • Strings  
• Vocal Arts/Opera • Winds & Percussion • Sound Recording Technology

### DEGREE PROGRAMS

[Undergraduate Programs](#) / [Graduate Programs](#)

*Additional details:* Bachelor of Arts in Music (with tracks in performance, jazz, entrepreneurship, technology, and history and literature)

### ADDITIONAL PROGRAMS (non-matriculating/prep)

[The Claudette Sorel Piano Competition & Piano](#)

[Fellows Program](#)

[Robert Jordan Piano Festival](#)

[Fredonia Summer Music Festival & Camp](#)

### ONLINE COURSES

[Online courses information](#)

Up to 25% will be available as hybrid or online-only courses

### PANDEMIC & SAFETY: SCHOOL POLICIES

[Policies & Procedures for this school](#)

Proof of vaccination required? (✓=Yes ✗=No)

✗ Students ✗ Faculty ✗ Staff

### SOCIAL LINKS



## FROST SCHOOL OF MUSIC

University of Miami

### WHAT MAKES THIS SCHOOL UNIQUE?

Frost School of Music students build themselves into musicians with the artistic, technological, and entrepreneurial skills to thrive in the rapidly changing world of professional music through the unique Frost Method © curriculum. Brilliant performance, creativity and scholarship are at our core.

**LOCATION** 5503 San Amaro Drive  
Coral Gables, FL 33146  
UNITED STATES  
[www.frost.miami.edu](http://www.frost.miami.edu)

**ADMISSIONS** 305-284-6168  
[admission.music@miami.edu](mailto:admission.music@miami.edu)

### Audition Requirements

[Undergraduate audition requirements by instrument](#)

[Graduate audition requirements by instrument](#)

Prospective undergraduates must submit the Common App before signing up for an audition. Early Action is recommended. To sign up for an audition, students must submit an [online Music Application](#).

### FINANCIAL INFORMATION

[Tuition & Fees](#) / [Financial Aid & Scholarships](#)

### CAREER / POST-GRADUATION ASSISTANCE

Frost School of Music's Dean, faculty, and professional staff provide music career advisement to students during all years of study. The majority of students also enroll in music business courses. The University of Miami's [Toppel Career Center](#) is also available for consultation.

### KEY STATISTICS (college level and above)

**800** music students

**Music Faculty:** 94 full time, 30 adjunct

### AREAS OF STUDY

Arts Leadership • Brass • Collaborative Piano  
• Composition (Performance) • Conducting • Guitar  
• Jazz Studies & Contemporary Media • Media studies (including audio and video production)  
• Music Business • Music Education • Musicology  
• Music Therapy • Piano • Strings • Vocal Arts/Opera  
• Winds & Percussion • Music Engineering  
Technology • Live Entertainment Management

### DEGREE PROGRAMS

[Undergraduate Programs](#) / [Graduate Programs](#)

### ONLINE COURSES

[Online courses information](#)

Additional plans under consideration

### PANDEMIC & SAFETY: SCHOOL POLICIES

Proof of vaccination required? (✓=Yes ✗=No)

✗ Students ✓ Faculty ✓ Staff

### SOCIAL LINKS





# NATIONAL FEDERATION of MUSIC CLUBS

*Offers over \$750,000 in awards annually.*

- NFMC Elizabeth Paris French Horn Award \$2,000
- NFMC Classical Guitar Award \$2,000
- NFMC Grethen E. Van Roy Music Education Scholarship \$1,500
- NFMC Dorothy Dann Bullock Music Therapy Scholarship \$1,500
- NFMC Oscar Valentin Violin Award \$1,500
- NFMC Carolyn Nelson Double Reed Award \$1,250
- NFMC Ernest A. Bluhm Flute Award \$800
- Frances J. Nelson Tuba Award \$800
- and many more...



For more details, please check out our website  
[www.nfmc-music.org/competitions-awards](http://www.nfmc-music.org/competitions-awards)

## IRVING S. GILMORE SCHOOL OF MUSIC

Western Michigan University

### WHAT MAKES THIS SCHOOL UNIQUE?

We are an All-Steinway School! Our School of Music offers a dynamic environment for students to perform, curate, and create music from a variety of music traditions, philosophies, and cultures. As artists, practitioners, and educators, we strive to recognize and uplift humanity through musical expression and intersectionality.

**LOCATION** 1903 West Michigan Avenue  
Kalamazoo, MI 49008-5434  
UNITED STATES  
[www.wmich.edu/music](http://www.wmich.edu/music)

**ADMISSIONS** 269-387-4672  
[music-ugrd@wmich.edu](mailto:music-ugrd@wmich.edu)

**Audition Requirements** [Audition Requirements](#)  
All Bachelor of Music and Bachelor of Musical Arts applicants must audition for a primary instrumental or vocal studio. Auditions are scheduled by completing a Music Application form. Bachelor of Science, Bachelor of Arts, and Composition applicants are not required to audition on a studio instrument but may submit a separate music application if they wish to do so.

### FINANCIAL INFORMATION

[Tuition & Fees](#) / [Financial Aid & Scholarships](#)

### CAREER / POST-GRADUATION ASSISTANCE

[Career Assistance](#)

### KEY STATISTICS (college level and above)

**500** music students  
**Music Faculty:** 45 full time, 15 adjunct  
**1,500** scholarships awarded  
*Scholarship details:* Varies USD

### AREAS OF STUDY

Brass • Collaborative Piano • Composition (Performance) • Conducting • Early Music • Guitar • Jazz Studies & Contemporary Media • Media studies (including audio and video production) • Music Education • Musicology • Music Therapy • Organ • Piano • Strings • Vocal Arts/Opera • Winds & Percussion

### DEGREE PROGRAMS

[Undergraduate Programs](#) / [Graduate Programs](#)

### PANDEMIC & SAFETY: SCHOOL POLICIES

Proof of vaccination required? (✓=Yes ✗=No)  
✗ Students ✗ Faculty ✗ Staff

### SOCIAL LINKS





## THE GLENN GOULD SCHOOL AT THE ROYAL CONSERVATORY OF MUSIC

### WHAT MAKES THIS SCHOOL UNIQUE?

The success of our graduates, many of whom now have successful international careers as concert and recording artists, is a testament to our focus on performance training. Committed to mentoring, our purposefully small school offers exceptional practice and performance spaces, and 50% more private-lesson time with inspiring, well-known faculty.

### LOCATION

TELUS Centre for Performance and Learning  
273 Bloor Street West  
Toronto, ON M5S 1W2  
CANADA  
[rcmusic.com/ggs](http://rcmusic.com/ggs)

**ADMISSIONS** 800-462-3815  
[glenngooldschool@rcmusic.ca](mailto:glenngooldschool@rcmusic.ca)

**Audition Requirements** [Audition Requirements](#)

### FINANCIAL INFORMATION

[Tuition & Fees](#) / [Financial Aid & Scholarships](#)

### CAREER / POST-GRADUATION ASSISTANCE

[The Rebanks Family Fellowship and International Performance Residency Program](#) is a one-year postgraduate program of The Royal Conservatory's Glenn Gould School. Created for artists on the cusp of a professional career, it offers a rich curriculum for career development including private study with exceptional faculty and guest artists; concert presentations and career coaching; and marketing training and support. Each Rebanks Fellow also participates in a funded European residency.

### KEY STATISTICS (college level and above)

**130** music students  
**Music Faculty:** **43** full time, **32** adjunct  
**130** scholarships awarded  
*Scholarship details:* CAD \$25,000 to CAD \$30,000

### AREAS OF STUDY

Brass • Piano • Strings • Vocal Arts/Opera • Winds & Percussion

### DEGREE PROGRAMS

[Bachelor of Music, Performance \(Honours\)](#)  
*Additional details:* [Artist Diploma Program \(two-year\)](#); [The Rebanks Family Fellowship and International Performance Residency Program \(one year\)](#)

### ADDITIONAL PROGRAMS (non-matriculating/prep)

[The Taylor Academy, specialized training for gifted musicians](#)  
[RCM Certificate Program](#)

### ONLINE COURSES

[Online courses information](#)

### PANDEMIC & SAFETY: SCHOOL POLICIES

Proof of vaccination required? (✓=Yes ✗=No)  
✗ Students ✗ Faculty ✗ Staff

### SOCIAL LINKS



## GUILDHALL SCHOOL OF MUSIC & DRAMA

### WHAT MAKES THIS SCHOOL UNIQUE?

Guildhall School is one of the world's leading conservatoires, highly regarded in the profession for intensive, dedicated training taught by renowned international teaching staff and through partnerships with the Barbican, London Symphony Orchestra, the BBC Symphony Orchestra, the Royal Opera House, and the Academy of Ancient Music.

### LOCATION

Guildhall School of Music & Drama  
London EC2Y 8DT  
UNITED KINGDOM  
[www.gsmd.ac.uk](http://www.gsmd.ac.uk)

**ADMISSIONS** +44 (0) 20 7382 6128  
[music\\_applications@gsmd.ac.uk](mailto:music_applications@gsmd.ac.uk)

### Audition Requirements

To be considered for a place at Guildhall School, you'll be asked to take part in a performance audition. Find out more about what you'll need to prepare: [Undergraduate requirements for repertoire](#); [Postgraduate requirements for repertoire](#)

### FINANCIAL INFORMATION

[Tuition & Fees](#) / [Financial Aid & Scholarships](#)

### CAREER / POST-GRADUATION ASSISTANCE

Training at Guildhall School aims to equip you for the career of your choice. It combines academic rigor and artistic skill with a strong professional focus. As a Guildhall School graduate, you will automatically become part of the [Guildhall Alumni community](#).

### KEY STATISTICS (college level and above)

**738** music students  
**Music Faculty:** **5** full time, **629** adjunct

### AREAS OF STUDY

Brass • Collaborative Piano • Composition (Performance) • Conducting • Early Music • Guitar • Jazz Studies & Contemporary Media • Media studies (including audio and video production) • Music Education • Musicology • Music Therapy • Organ • Piano • Strings • Vocal Arts/Opera • Winds & Percussion

### DEGREE PROGRAMS

[Undergraduate Programs](#) / [Graduate Programs](#)  
*Additional details:* BMus Electronic & Produced Music; BA Acting; BA Production Arts; BA Digital Design & Production; MMus/MPerf in Performance; MA in Opera Making & Writing; PGCert in Performance Teaching; Research Degrees; a wide range of Short Courses across Music and other art forms.

### ADDITIONAL PROGRAMS (non-matriculating/prep)

[Children and Young People](#)

### PANDEMIC & SAFETY: SCHOOL POLICIES

Proof of vaccination required? (✓=Yes ✗=No)  
✗ Students ✗ Faculty ✗ Staff

### SOCIAL LINKS



## THE HARTT SCHOOL

### University of Hartford

#### WHAT MAKES THIS SCHOOL UNIQUE?

The Hartt School is a collaborative environment where students engage with the professional world in meaningful ways to enhance their education and professional network. Faculty get to know each student and guide them as they develop their artistry and career path.

**LOCATION** 200 Bloomfield Avenue  
West Hartford, CT 06117  
UNITED STATES  
[www.hartford.edu/hartt](http://www.hartford.edu/hartt)

**ADMISSIONS** 860-768-4465  
[harttadm@hartford.edu](mailto:harttadm@hartford.edu)

#### Audition Requirements [Audition Requirements](#)

An audition and/or interview is required for all programs.

#### FINANCIAL INFORMATION

[Tuition & Fees](#) / [Financial Aid & Scholarships](#)

#### CAREER / POST-GRADUATION ASSISTANCE

At Hartt, students are provided professional experiences under faculty guidance and are fully prepared to begin their careers upon graduation. All degree programs at Hartt include career preparation coursework and undergraduate performance majors can choose a minor in performing arts management. The University of Hartford's career services office has a career counselor dedicated to the arts and remains a free resource to alumni.

#### KEY STATISTICS (college level and above)

**400** music students  
**Music Faculty:** **48** full time, **100** adjunct

#### AREAS OF STUDY

Arts Leadership • Brass • Composition (Performance) • Conducting • Early Music • Guitar • Jazz Studies & Contemporary Media • Media studies (including audio and video production) • Music Business • Music Education • Organ • Piano • Strings • Vocal Arts/Opera • Winds & Percussion • Music Management • Acoustical Engineering and Music • Music and Performing Arts Management • Musical Theatre • Actor Training • Stage Management • Technical Theatre • Ballet Pedagogy • Dance Performance

#### DEGREE PROGRAMS

[Undergraduate Programs](#) / [Graduate Programs](#)

#### ADDITIONAL PROGRAMS (non-matriculating/prep)

[Hartt School Community Division](#)

#### PANDEMIC & SAFETY: SCHOOL POLICIES

[Policies & Procedures for this school](#)

Proof of vaccination required? (✓=Yes ✗=No)

✓ Students ✓ Faculty ✓ Staff

#### SOCIAL LINKS



## HUGH HODGSON SCHOOL OF MUSIC

### University of Georgia

#### WHAT MAKES THIS SCHOOL UNIQUE?

Home to approximately 600 students and a faculty of 70, the Hodgson School offers a wide variety of degree programs from baccalaureate through doctoral levels, as well as many opportunities for all UGA students to participate in ensembles and academic classes. Each year the school hosts nearly 350 public performances.

**LOCATION** 250 River Road  
Athens, GA 30602  
UNITED STATES  
[music.uga.edu](http://music.uga.edu)

**ADMISSIONS** 706-542-2005  
[musicad@uga.edu](mailto:musicad@uga.edu)

#### Audition Requirements [Audition Requirements](#)

#### FINANCIAL INFORMATION

[Tuition & Fees](#) / [Financial Aid & Scholarships](#)

#### CAREER / POST-GRADUATION ASSISTANCE

[Career Assistance](#)

#### KEY STATISTICS (college level and above)

**600** music students  
**Music Faculty:** **70** full time, **0** adjunct

#### AREAS OF STUDY

Composition (Performance) • Conducting • Guitar • Music Education • Musicology • Music Therapy • Organ • Piano • Strings • Vocal Arts/Opera • Winds & Percussion

#### DEGREE PROGRAMS

[Undergraduate Programs](#) / [Graduate Programs](#)

#### ONLINE COURSES

[Online courses information](#)

Up to 25% will be available as hybrid or online-only courses

#### PANDEMIC & SAFETY: SCHOOL POLICIES

[Policies & Procedures for this school](#)

Proof of vaccination required? (✓=Yes ✗=No)

✗ Students ✗ Faculty ✗ Staff

#### SOCIAL LINKS





# IU JACOBS SCHOOL OF MUSIC

Indiana University

## WHAT MAKES THIS SCHOOL UNIQUE?

The more than 1,500 students who study at the Jacobs School of Music benefit from the intensity and focus of a conservatory combined with the broad academic offerings of a major university. The breadth and number of performance opportunities are unparalleled in college music study.

## LOCATION

Indiana University Jacobs School of Music  
Simon Music Building  
200 South Eagleson Avenue  
Bloomington, IN 47405  
UNITED STATES

[www.music.indiana.edu](http://www.music.indiana.edu)

**ADMISSIONS** 812-855-7998  
[musicadm@indiana.edu](mailto:musicadm@indiana.edu)

## Audition Requirements [Audition Requirements](#)

All programs in the Jacobs School of Music require an audition or interview, and in some cases, both. Many programs also require a pre-screening. All materials are due by December 1, 2023.

## FINANCIAL INFORMATION

[Tuition & Fees](#) / [Financial Aid & Scholarships](#)



## CAREER / POST-GRADUATION ASSISTANCE

### [Career Assistance](#)

Offerings include expert guidance, education programs, extensive resources, project mentoring, as well as a wide variety of events. An undergraduate Certificate in Music Entrepreneurship (15 credits) is offered by the OECD in partnership with the Kelley School of Business.

## KEY STATISTICS (college level and above)

**1,600** music students  
**Music Faculty:** 175 full time, 30 adjunct

## AREAS OF STUDY

Brass • Collaborative Piano • Composition (Performance) • Conducting • Early Music • Guitar • Jazz Studies & Contemporary Media • Media studies (including audio and video production) • Music Business • Music Education • Musicology • Music Therapy • Organ • Piano • Strings • Winds & Percussion • Audio Engineering and Sound Production • Ballet • Chamber and Collaborative Music • Choral Conducting • Music Entrepreneurship

## DEGREE PROGRAMS

[Undergraduate Programs](#) / [Graduate Programs](#)

## PANDEMIC & SAFETY: SCHOOL POLICIES

Proof of vaccination required? (✓=Yes ✗=No)  
✓ Students ✓ Faculty ✓ Staff

**SOCIAL LINKS**    



  
**JACOBS**  
SCHOOL OF MUSIC  
Bloomington

**Apply for  
Fall 2024!**

Undergraduate: **Nov. 1, 2023**  
Graduate: **Dec. 1, 2023**

[music.indiana.edu](http://music.indiana.edu)

Enjoy an extraordinary **7:1 student-to-faculty ratio** combined with top-notch instruction, facilities, and resources at one of the world's finest music schools, nestled in the heart of an inclusive and picturesque university community.

# THE JUILLIARD SCHOOL

The mission of The Juilliard School is to provide the highest caliber of artistic education for gifted musicians, dancers, and actors from around the world, so that they may achieve their fullest potential as artists, leaders, and global citizens.

## WHAT MAKES THIS SCHOOL UNIQUE?

Since 1905, Juilliard has educated the world's foremost musicians, dancers, actors, and playwrights. Our Lincoln Center campus, with its world-renowned faculty, continues to be a launch pad for the next generation of performing artists.

**LOCATION** 60 Lincoln Center Plaza  
New York, NY 10023  
UNITED STATES  
[www.juilliard.edu](http://www.juilliard.edu)

**ADMISSIONS** 212-799-5000 x223  
[musicadmissions@juilliard.edu](mailto:musicadmissions@juilliard.edu)

**Audition Requirements** [Audition Requirements](#)

## FINANCIAL INFORMATION

[Tuition & Fees](#) / [Financial Aid & Scholarships](#)

# Juilliard

## CAREER / POST-GRADUATION ASSISTANCE

[The Alan D. Marks Center for Career Services and Entrepreneurship](#) at Juilliard provides a comprehensive integration of career services programs and entrepreneurial strategies into the ecosystem of the Juilliard community. Services include career guidance; self-assessment tools; résumé, curriculum vitae, and website development; career workshops; marketing; graphic image design; project development; fundraising; internship opportunities; and performance opportunities.

## KEY STATISTICS (college level and above)

676 music students

**Music Faculty:** 173 full time, 132 adjunct

## AREAS OF STUDY

Brass • Collaborative Piano • Composition (Performance) • Conducting • Early Music • Guitar • Jazz Studies & Contemporary Media • Organ • Piano • Strings • Vocal Arts/Opera • Winds & Percussion • Dance • Acting • Playwriting

## DEGREE PROGRAMS

[Undergraduate Programs](#) / [Graduate Programs](#)

## ADDITIONAL PROGRAMS (non-matriculating/prep)

[Cross-Registration Programs](#)

[Preparatory Division](#)

## PANDEMIC & SAFETY: SCHOOL POLICIES

[Policies & Procedures for this school](#)

Proof of vaccination required? (✓=Yes ✗=No)

✓ Students ✓ Faculty ✓ Staff

## SOCIAL LINKS



Juilliard

Transforming  
passion into  
artistry

Join a supportive community of talented young musicians, incomparable faculty, and renowned guest teachers, and take advantage of all that Juilliard offers, including

- Undergraduate and graduate degrees and diplomas in Music Performance, Jazz Studies, Historical Performance, and Vocal Arts
- A curriculum designed to develop your artistic and intellectual curiosity
- A conservatory environment that fosters interdisciplinary collaborations across Juilliard's dance, drama, and music divisions
- Performance opportunities at iconic venues on our Lincoln Center campus, throughout New York City, and beyond



APPLY BY DECEMBER 1

[juilliard.edu/admissions](http://juilliard.edu/admissions)

PHOTO: ROSALIE O'CONNOR



## LEEDS CONSERVATOIRE

University of Hull

### WHAT MAKES THIS SCHOOL UNIQUE?

Our tutors have a wealth of industry experience, bringing relevant, up-to-date professional knowledge into the classroom. Whether you study one-to-one with an expert in your chosen instrument, or develop your skills in specialist group study, you will be working with our leading tutors to develop your knowledge and technique.

**LOCATION** 3 Quarry Hill  
Leeds LS2 7PD  
West Yorkshire  
UNITED KINGDOM  
[www.leedsconservatoire.ac.uk](http://www.leedsconservatoire.ac.uk)

**ADMISSIONS** +44 75 9571 1606  
[international@lcm.ac.uk](mailto:international@lcm.ac.uk)

**Audition Requirements** [Audition Requirements](#)

**FINANCIAL INFORMATION**  
[Tuition & Fees](#) / [Financial Aid & Scholarships](#)

**CAREER / POST-GRADUATION ASSISTANCE**  
We have an amazing Employability and Enterprise team which supports our students' career and artistic ambitions throughout their studies and beyond. Our specialist team helps students with many opportunities such as mentoring and specially developed materials and resources.

## LEEDS CONSERVATOIRE (cont'd)

University of Hull

**KEY STATISTICS** (college level and above)  
**1,600** music students  
**Music Faculty: 35** full time, **49** adjunct  
**12** scholarships awarded  
*Scholarship details: £5000*

**AREAS OF STUDY**  
Collaborative Piano • Composition (Performance)  
• Conducting • Early Music • Guitar • Jazz Studies & Contemporary Media • Media studies (including audio and video production) • Music Business  
• Organ • Piano • Strings • Vocal Arts/Opera • Winds & Percussion • Performing Arts

**DEGREE PROGRAMS**  
[Undergraduate Programs](#) / [Graduate Programs](#)

**ADDITIONAL PROGRAMS** (non-matriculating/prep)  
[Leeds Junior Conservatoire, ages 8 to 18](#)  
[Summer Academy](#)

**PANDEMIC & SAFETY: SCHOOL POLICIES**  
[Policies & Procedures for this school](#)  
Proof of vaccination required? (✓=Yes ✗=No)  
✗ Students ✗ Faculty ✗ Staff

**SOCIAL LINKS**    



**CRANE**  
School of Music at SUNY Potsdam

Crane has **WORLD-CLASS FACULTY** who are here for you

Crane offers you a **WIDE VARIETY** of majors and minors


Crane is part of SUNY's premiere **ARTS-FOCUSED CAMPUS**

[potsteam.edu/crane](http://potsteam.edu/crane)  
**1 (877) POTSDAM**

Play 100 services with the Virginia Symphony Orchestra and earn 12 university-level course credits from Old Dominion University!

**AUDITION** for the **VSO African American Fellowship Program 2024-2025**

**Virginia Symphony Orchestra**  
**African American Fellowship Program**  
In Collaboration with Old Dominion University



**VIRGINIA SYMPHONY ORCHESTRA**  
*Eric Jacobsen, Music Director*

For more information, visit [VirginiaSymphony.org](http://VirginiaSymphony.org)

## LONGY SCHOOL OF MUSIC

### Bard College

#### WHAT MAKES THIS SCHOOL UNIQUE?

The world needs music now more than ever. At Longy, we prepare students to become exceptional musicians who can engage new audiences; teach anyone, anywhere; and use artistry to change lives in communities around the world. Join us and become the musician the world needs you to be.

**LOCATION** 27 Garden Street  
Cambridge, MA 02138  
UNITED STATES  
[longy.edu/](http://longy.edu/)

**ADMISSIONS** 617-876-0956  
[admissions@longy.edu](mailto:admissions@longy.edu)

**Audition Requirements** [Audition Requirements](#)  
Longy's entire application process is barrier-free: There is no fee to apply, no specific repertoire requirement, and you may choose your own timeline, including an Early Action option.

**FINANCIAL INFORMATION**  
[Tuition & Fees](#) / [Financial Aid & Scholarships](#)

**CAREER / POST-GRADUATION ASSISTANCE**  
From their first days at Longy, students become Boston musicians, performing professionally with faculty on concert stages around the city. Networking opportunities abound. Longy students can further expand their skills through Teaching Assistantships or Graduate Fellowships, which reduce tuition by up to \$10,000 per year.

**KEY STATISTICS** (college level and above)  
**320** music students  
**Music Faculty:** **0** full time, **127** adjunct  
**300** scholarships awarded  
*Scholarship details:* \$25,000

**AREAS OF STUDY**  
Brass • Collaborative Piano • Composition (Performance) • Early Music • Guitar • Jazz Studies & Contemporary Media • Music Business • Music Education • Musicology • Music Therapy • Organ • Piano • Strings • Vocal Arts/Opera • Winds & Percussion • Chamber Music • Music Historical Performance

**DEGREE PROGRAMS**  
[Undergraduate Programs](#) / [Graduate Programs](#)  
*Additional details:* Master of Music in Music Education Online; Teacher Education Professional Development

**ONLINE COURSES**  
[Online courses information](#)  
Additional plans under consideration

**PANDEMIC & SAFETY: SCHOOL POLICIES**  
[Policies & Procedures for this school](#)  
Proof of vaccination required? (✓=Yes ✗=No)  
✗ Students ✓ Faculty ✓ Staff

**SOCIAL LINKS**    

## LYNN UNIVERSITY CONSERVATORY OF MUSIC

### Lynn University

#### WHAT MAKES THIS SCHOOL UNIQUE?

Lynn offers world-class faculty and full-tuition scholarships to all enrolled conservatory students. Room and board scholarships are also available to undergraduate students.

**LOCATION** 3601 North Military Trail  
Boca Raton, FL 33431  
UNITED STATES  
[www.lynn.edu/music](http://www.lynn.edu/music)

**ADMISSIONS** 561-237-7084  
[music@lynn.edu](mailto:music@lynn.edu)

**Audition Requirements** [Audition Requirements](#)

**FINANCIAL INFORMATION**  
[Tuition & Fees](#)

**CAREER / POST-GRADUATION ASSISTANCE**  
Lynn's comprehensive career preparation includes: one-on-one career counseling; résumé writing and coaching; tips on employment research; personality and skill assessments; informational and mock interviews; professional networking; entrepreneurial seminars; professional outreach engagements; and orchestral mock auditions.

**KEY STATISTICS** (college level and above)  
**110** music students  
**Music Faculty:** **12** full time, **13** adjunct  
**110** scholarships awarded

**AREAS OF STUDY**  
Brass • Collaborative Piano • Composition (Performance) • Piano • Strings • Winds & Percussion • Instrumental Collaborative Piano (graduate-level only) • Percussion

**DEGREE PROGRAMS**  
Undergraduate Programs in [composition](#), [piano](#), [performance](#). [Graduate Programs](#)  
*Additional details:* Undergraduate Bachelor of Music; Graduate Master of Music; Graduate Certificate Professional Performance

**PANDEMIC & SAFETY: SCHOOL POLICIES**  
Proof of vaccination required? (✓=Yes ✗=No)  
✗ Students ✗ Faculty ✗ Staff

**SOCIAL LINKS**  



# MANHATTAN SCHOOL OF MUSIC

Manhattan School of Music is deeply committed to excellence in education, performance, and creative activity; to the humanity of the School's environment; and to the cultural enrichment of the larger community. A premier international conservatory, MSM inspires and empowers highly talented individuals to realize their potential.

## WHAT MAKES THIS SCHOOL UNIQUE?

Manhattan School of Music takes full advantage of New York's abundant learning and performance opportunities, preparing highly talented students for careers as passionate performers and composers and to be imaginative, effective leaders in the arts. Our students thrive in a supportive atmosphere that encourages excellence, values individuals, and welcomes innovation.

**LOCATION** 130 Claremont Avenue  
New York, NY 10027  
UNITED STATES  
[www.msmnyc.edu/](http://www.msmnyc.edu/)

**ADMISSIONS** 917-493-4436  
[admission@msmnyc.edu](mailto:admission@msmnyc.edu)

**Audition Requirements** [Audition Requirements](#)

## FINANCIAL INFORMATION

[Tuition & Fees](#) / [Financial Aid & Scholarships](#)

## CAREER / POST-GRADUATION ASSISTANCE

MSM's [Center for Career Readiness and Community Impact \(CCRCI\)](#) provides professional career coaching in a supportive environment. In addition to career-advancing coursework, the program's highlights include: a series of arts partnerships with local K-12 schools and memory care facilities; MSM performances for visiting school groups; teaching

# M Manhattan School of Music

placements for CCRCI participants; a dynamic calendar of Setting the Stage workshops, resources for current students/alumni (including the Hire A Musician referral service, Private Teacher Directory, and Online Opportunities Board), and one-on-one career advising.

## KEY STATISTICS (college level and above)

**1,080** music students  
**Music Faculty:** 89 full time, 166 adjunct  
*Scholarship details:* \$22,000

## AREAS OF STUDY

Brass • Collaborative Piano • Composition (Performance) • Conducting • Guitar • Jazz Studies & Contemporary Media • Organ • Piano • Strings • Vocal Arts/Opera • Winds & Percussion • Musical Theatre • Orchestral Performance • Classical Contemporary Performance

## DEGREE PROGRAMS

Bachelor of Music  
[Undergraduate Programs](#) / [Graduate Programs](#)  
*Additional details:* Musical Theatre (BM only); Orchestral Performance (MM, PS, PPD only); Classical Contemporary Performance (MM, PS, PPD only)

## ADDITIONAL PROGRAMS (non-matriculating/prep)

[Variety of Special Programs](#)  
[The Global Conservatoire](#)

## PANDEMIC & SAFETY: SCHOOL POLICIES

[Policies & Procedures for this school](#)  
Proof of vaccination required? (✓=Yes ✗=No)  
✓ Students ✓ Faculty ✓ Staff

**SOCIAL LINKS**     



**Manhattan School of Music**

**BE A PART OF IT IN THE HEART OF IT.**

**Study Music in New York City**

**MSMNYC.EDU**  
NEW YORK, NY  
admission@msmnyc.edu

## Conservatory Experience

MSM is one of the largest stand-alone music conservatories in the United States, and one of the finest in the world. The School offers a Bachelor of Music (BM) in Classical, Jazz, and Musical Theatre, as well as additional Graduate Studies and programs.

## MASON GROSS SCHOOL OF THE ARTS

Rutgers, the State University of New Jersey

### WHAT MAKES THIS SCHOOL UNIQUE?

Mason Gross students have access to all the resources of a music conservatory situated within a nationally ranked research university. Located 45 minutes outside of New York City, our faculty roster boasts principals and members of the New York Philharmonic, the Metropolitan Opera Orchestra, and the Philadelphia Orchestra.

**LOCATION** Mason Gross School of the Arts  
33 Livingston Avenue  
New Brunswick, NJ 08901  
[www.masongross.rutgers.edu](http://www.masongross.rutgers.edu)

**ADMISSIONS** 848-932-5241  
[admissions@mgsa.rutgers.edu](mailto:admissions@mgsa.rutgers.edu)

**Audition Requirements** [Audition Requirements](#)

**FINANCIAL INFORMATION**  
[Tuition & Fees](#) / [Financial Aid & Scholarships](#)

**CAREER / POST-GRADUATION ASSISTANCE**  
[Career Assistance](#)

**KEY STATISTICS** (college level and above)  
**550** music students  
**Music Faculty:** **90** full time, **100** adjunct

**AREAS OF STUDY**  
Brass • Collaborative Piano • Composition (Performance) • Conducting • Early Music • Guitar • Jazz Studies & Contemporary Media • Media studies (including audio and video production) • Music Education • Musicology • Music Therapy • Organ • Piano • Strings • Vocal Arts/Opera • Winds & Percussion

**DEGREE PROGRAMS**  
[Undergraduate Programs](#) / [Graduate Programs](#)

**ADDITIONAL PROGRAMS** (non-matriculating/prep)  
[Rutgers Community Arts for Pre-College and Adults](#)

**ONLINE COURSES**  
[Online courses information](#)  
Up to 25% will be available as hybrid or online-only courses

**PANDEMIC & SAFETY: SCHOOL POLICIES**  
[Policies & Procedures for this school](#)  
Proof of vaccination required? (✓=Yes ✗=No)  
✗ Students ✗ Faculty ✗ Staff

**SOCIAL LINKS**    

## ROBERT MCDUFFIE CENTER FOR STRINGS

Mercer University

### WHAT MAKES THIS SCHOOL UNIQUE?

Founded as a special institute within Mercer University's Townsend School of Music, the McDuffie Center for Strings is limited to 26 students: 12 violinists, six violists, six cellists and two bassists. All accepted students receive a full-tuition scholarship to study with an unparalleled faculty of international performing artists.

**LOCATION** 1501 Mercer University Drive  
Macon, GA 31207  
UNITED STATES  
[mcduffie.mercer.edu](http://mcduffie.mercer.edu)

**ADMISSIONS** 478-301-2886  
[mcduffiecenter@mercer.edu](mailto:mcduffiecenter@mercer.edu)

**Audition Requirements** [Audition Requirements](#)  
Two contrasting movements of solo Bach: a concerto movement and an etude/caprice of the student's choice.

**FINANCIAL INFORMATION**  
[Tuition & Fees](#)

**CAREER / POST-GRADUATION ASSISTANCE**  
[Career Assistance](#)

**KEY STATISTICS** (college level and above)  
**26** music students  
**Music Faculty:** **3** full time, **11** adjunct  
**26** scholarships awarded  
*Scholarship details:* All students receive full tuition scholarship

**AREAS OF STUDY**  
Brass • Collaborative Piano • Conducting • Music Education • Organ • Piano • Strings • Vocal Arts/Opera • Winds & Percussion

**DEGREE PROGRAMS**  
[Undergraduate Programs](#)  
Bachelor of Music with Elective Studies in Business;  
Bachelor of Music  
[Graduate Programs](#)  
*Additional details:* Artist Diploma (post-baccalaureate only)

**PANDEMIC & SAFETY: SCHOOL POLICIES**  
Proof of vaccination required? (✓=Yes =No)  
✗ Students ✗ Faculty ✗ Staff

**SOCIAL LINKS** 



## NEW ENGLAND CONSERVATORY

### WHAT MAKES THIS SCHOOL UNIQUE?

NEC is a premier conservatory that values exploration, collaboration, and community. Students are mentored by a devoted faculty of esteemed artist-teachers and scholars. Alumni fill orchestra chairs, concert halls, jazz clubs, recording studios, and arts and corporate management positions worldwide.

**LOCATION** 290 Huntington Avenue  
Boston, MA 02115  
UNITED STATES  
[necmusic.edu/](http://necmusic.edu/)

**ADMISSIONS** 617-585-1101  
[admissions@necmusic.edu](mailto:admissions@necmusic.edu)

**Audition Requirements** [Audition Requirements](#)

### FINANCIAL INFORMATION

[Tuition & Fees](#) / [Financial Aid & Scholarships](#)

### CAREER / POST-GRADUATION ASSISTANCE

Our [Entrepreneurial Musicianship program](#) provides students and alumni with individual advising and career coaching, courses to gain professional skill within the conservatory curriculum, pathways to gain professional experience through hands-on learning, and opportunities to fund and incubate new creative work.

A recognized trailblazer, NEC's [Community Performances and Partnerships Program](#) is one of the premier programs in the nation for engaging conservatory students with their community through robust, meaningful partnership activities

and high quality training. CPP interacts annually with over to 10,000 people through over 150 events and 700 hours of teaching that reach across ages, neighborhoods, ethnicities, and economic disparities in the city of Boston and beyond. CPP simultaneously provides NEC students with a crucial opportunity to explore what it means to be a musician living in and contributing to community life.

**KEY STATISTICS** (college level and above)  
**831** music students  
**Music Faculty:** **109** full time, **138** adjunct

### AREAS OF STUDY

Brass • Collaborative Piano • Composition (Performance) • Conducting • Guitar • Jazz Studies & Contemporary Media • Musicology • Piano • Strings • Vocal Arts/Opera • Winds & Percussion • Collaborative Piano • Contemporary Musical Arts

### DEGREE PROGRAMS

[Undergraduate Programs](#) / [Graduate Programs](#)  
*Additional details:* Professional Piano Trio Program; Professional String Quartet Program; Artist Diploma Program; Doctor of Musical Arts

### PANDEMIC & SAFETY: SCHOOL POLICIES

Proof of vaccination required? (✓=Yes ✗=No)  
✓ Students ✓ Faculty ✓ Staff

### SOCIAL LINKS



## NEW WORLD SYMPHONY, AMERICA'S ORCHESTRAL ACADEMY

### WHAT MAKES THIS SCHOOL UNIQUE?

A laboratory for the way music is taught, presented, and experienced, the New World Symphony consists of 87 musicians who are granted fellowships lasting up to three years. The fellowship offers in-depth exposure to traditional & modern repertoire, professional development training, and personalized experiences working with leading guest faculty.

**LOCATION** New World Center  
500 17th Street  
Miami Beach, FL 33139  
UNITED STATES  
[www.nws.edu](http://www.nws.edu)

**ADMISSIONS** 305-428-3300  
[admissions@nws.edu](mailto:admissions@nws.edu)

**Audition Requirements** [Audition Requirements](#)

### FINANCIAL INFORMATION

[Tuition & Fees](#) / [Financial Aid & Scholarships](#)

### CAREER / POST-GRADUATION ASSISTANCE

NWS BLUE PROJECTS: NWS Fellows and alumni participate in [NWS BLUE projects](#). Standing for Build, Learn, Understand and Experiment, NWS's BLUE is a combination of leadership and entrepreneurship training and hands-on experimentation that provides NWS Fellows and alumni with a comprehensive skill set to complement their musical training. NWS BLUE enables all Fellows and selected alumni to pursue musical activism based on their personal interests with their own original initiatives, from concept to execution. NWS BLUE

is currently being studied as part of a long-term research project on sustainable entrepreneurship in the performing arts supported by NEA Research Labs: The Arts, Entrepreneurship, and Innovation.

**AUDITION SEMINARS:** An intensive four-day audition preparation seminar, involving visiting coaches from major orchestras, is held each year. In addition, Fellows organize monthly mock auditions intended to replicate the conditions of professional orchestra auditions. There is also an annual series of workshops with psychologist Dr. Noa Kageyama.

**KEY STATISTICS** (college level and above)  
**87** music students  
**Music Faculty:** **5** full time, **1,100** adjunct  
**87** scholarships awarded

### AREAS OF STUDY

Arts Leadership • Brass • Composition (Performance) • Conducting • Early Music • Jazz Studies & Contemporary Media • Media studies (including audio and video production) • Music Education • Piano • Strings • Winds & Percussion  
*Additional details:* The New World Symphony is a non-degree granting member of the National Association of Schools of Music.

### ONLINE COURSES

[Online courses information](#)  
Additional plans under consideration

### PANDEMIC & SAFETY: SCHOOL POLICIES

Proof of vaccination required? (✓=Yes ✗=No)  
✗ Students ✗ Faculty ✗ Staff

### SOCIAL LINKS



## NORTHEASTERN UNIVERSITY DEPARTMENT OF MUSIC, COLLEGE OF ARTS, MEDIA & DESIGN

### WHAT MAKES THIS SCHOOL UNIQUE?

The Department of Music at Northeastern is devoted to offering graduate and undergraduate majors, combined majors and minors a cross-disciplinary approach to research and practice in music, underscored by real-world experiential learning and cutting-edge technology.

**LOCATION** 351 Ryder Hall  
Northeastern University  
Boston, MA 02115  
UNITED STATES  
[camd.northeastern.edu/music/](http://camd.northeastern.edu/music/)

**ADMISSIONS** 617-373-2200  
[admissions@northeastern.edu](mailto:admissions@northeastern.edu)

**FINANCIAL INFORMATION**  
[Tuition & Fees](#) / [Financial Aid & Scholarships](#)

**CAREER / POST-GRADUATION ASSISTANCE**  
[Career Assistance](#)

**KEY STATISTICS** (college level and above)  
**400** music students  
**Music Faculty:** **19** full time, **10** adjunct

### AREAS OF STUDY

Arts Leadership • Jazz Studies & Contemporary Media • Media studies (including audio and video production) • Music Business • Musicology

### DEGREE PROGRAMS

[Undergraduate Programs](#) / [Graduate Programs](#)  
*Additional details:* Music with Concentration in Music Industry, BS; Music with Concentration in Music Technology, BS; Music, BA; Computer Science and Music with Concentration in Music Technology, BS; Electrical Engineering and Music with Concentration in Music Technology, BS; Game Design and Music with Concentration in Music Technology, BS; Music and Communication Studies with Concentration in Music Industry, BS; Music and Psychology, BS; Physics and Music with Concentration in Music Technology, BS; Arts Administration and Cultural Entrepreneurship, MS; Creative Practice Leadership, MS

### ONLINE COURSES

[Online courses information](#)  
Additional plans under consideration

### PANDEMIC & SAFETY: SCHOOL POLICIES

[Policies & Procedures for this school](#)  
Proof of vaccination required? (✓=Yes ✗=No)  
✓ Students ✓ Faculty ✓ Staff

**SOCIAL LINKS**    

## OBERLIN CONSERVATORY OF MUSIC

### Oberlin College

### WHAT MAKES THIS SCHOOL UNIQUE?

Oberlin Conservatory focuses on undergraduate pre-professional musicians in classical, contemporary, jazz performance; composition; and electronic music. The conservatory is embedded within the premier liberal arts environment of Oberlin College and is renowned for the [Double Degree Program](#).

**LOCATION** 77 West College Street  
Oberlin, OH 44074  
UNITED STATES  
[www.oberlin.edu/conservatory](http://www.oberlin.edu/conservatory)

**ADMISSIONS** 440-775-8413  
[Conservatory.Admissions@oberlin.edu](mailto:Conservatory.Admissions@oberlin.edu)

**Audition Requirements** [Audition Requirements](#)  
Audition requirements vary according to discipline. Click above link for complete information.

**FINANCIAL INFORMATION**  
[Tuition & Fees](#) / [Financial Aid & Scholarships](#)

**CAREER / POST-GRADUATION ASSISTANCE**  
Oberlin College's [Career Center](#) and Oberlin Conservatory's [Professional Development Office](#) serve students and recent alumni. Two "[Career Communities](#)" connect students, alumni, parents, and faculty.

[Joint programs](#) offered in collaboration with the College of Arts & Sciences and the Conservatory include the integrative concentrations in "Arts Administration and Leadership" and "Pedagogy, Advocacy, and Community Engagement."

### KEY STATISTICS

 (college level and above)

**580** music students  
**Music Faculty:** **80** full time, **25** adjunct  
**580** scholarships awarded  
*Scholarship details:* The \$10,000 Oberlin Commitment Scholarship is offered to all enrolling conservatory students. Additional financial aid and merit awards are available. Each student also has access to \$5,000 of internship support.

### AREAS OF STUDY

Brass • Collaborative Piano • Composition (Performance) • Conducting • Early Music • Guitar • Jazz Studies & Contemporary Media • Media studies (including audio and video production) • Music Education • Musicology • Music Therapy • Organ • Piano • Strings • Vocal Arts/Opera • Winds & Percussion • Piano Technology

### DEGREE PROGRAMS

[Undergraduate Programs](#) / [Graduate Programs](#)  
*Additional details:* MM in Performance on Historical Instruments; MM in Conducting—a five-year BM, MM program; Artist Diploma in Recording Arts and Production

**ADDITIONAL PROGRAMS** (non-matriculating/prep)  
[Entrepreneurship Experience](#)  
[Summer Programs](#)

### PANDEMIC & SAFETY: SCHOOL POLICIES

[Policies & Procedures for this school](#)  
Proof of vaccination required? (✓=Yes ✗=No)  
✓ Students ✓ Faculty ✓ Staff

**SOCIAL LINKS**     



## THE OHIO STATE UNIVERSITY SCHOOL OF MUSIC

### The Ohio State University

#### WHAT MAKES THIS SCHOOL UNIQUE?

The school recognizes the relationship that binds music to other academic and artistic disciplines and provides students with a comprehensive education, preparing them for professional careers in composition, performance, scholarship, and teaching.

**LOCATION** 1866 College Road North  
Columbus, OH 43210  
UNITED STATES  
[music.osu.edu](http://music.osu.edu)

**ADMISSIONS** 614-688-0372  
[sparks.348@osu.edu](mailto:sparks.348@osu.edu)

[Audition Requirements](#) [Audition Requirements](#)

#### FINANCIAL INFORMATION

[Tuition & Fees](#) / [Financial Aid & Scholarships](#)

#### CAREER / POST-GRADUATION ASSISTANCE

[Career Counseling and Support Services](#) lists relevant, on and off campus, career resources to assist all OSU students in their career decision-making processes.

**KEY STATISTICS** (college level and above)  
**400** music students

**Music Faculty:** **60** full time, **40** adjunct

#### AREAS OF STUDY

Brass • Composition (Performance) • Conducting  
• Jazz Studies & Contemporary Media • Music Education • Musicology • Piano • Strings • Vocal Arts/Opera • Winds & Percussion

#### DEGREE PROGRAMS

[Undergraduate Programs](#) / [Graduate Programs](#)  
*Additional details:* Bachelor of Science in Music—Sonic Arts; Bachelor of Science in Music—Computer Science; Bachelor of Science in Music—Creative Practice, Music Business and Technology

#### PANDEMIC & SAFETY: SCHOOL POLICIES

Proof of vaccination required? (✓=Yes ✗=No)  
✗ Students ✗ Faculty ✗ Staff

**SOCIAL LINKS**    

## PACIFIC REGION INTERNATIONAL SUMMER MUSIC ASSOCIATION (PRISMA) FESTIVAL & ACADEMY

#### WHAT MAKES THIS SCHOOL UNIQUE?

PRISMA prides itself on its focus not only on the technical aspects of music education but on the care it takes to ensure a positive experience—one that brings people together through a shared love of music. It has an exceptionally supportive environment for learning and performing together.

**LOCATION** c/o Robbins & Co.  
4313 Alberta Avenue, Suite 9  
Powell River, BC V8A 5G7  
CANADA  
[www.prismafestival.com](http://www.prismafestival.com)

**ADMISSIONS** 855-577-4762  
[admissions@prismafestival.com](mailto:admissions@prismafestival.com)

[Audition Requirements](#) [Audition Requirements](#)

#### FINANCIAL INFORMATION

[Tuition & Fees](#) / [Financial Aid & Scholarships](#)

#### CAREER / POST-GRADUATION ASSISTANCE

Audition training

**KEY STATISTICS** (college level and above)  
**80** music students  
**Music Faculty:** **1** full time, **23** adjunct  
**40** scholarships awarded

#### AREAS OF STUDY

Brass • Conducting • Strings • Vocal Arts/Opera  
• Winds & Percussion • Applied Music (Performance)  
• Audition Training • Orchestral Conducting

**ADDITIONAL PROGRAMS** (non-matriculating/prep)  
[Orchestral Training Program](#)

#### PANDEMIC & SAFETY: SCHOOL POLICIES

[Policies & Procedures for this school](#)  
Proof of vaccination required? (✓=Yes ✗=No)  
✗ Students ✗ Faculty ✗ Staff

**SOCIAL LINKS**    

# PEABODY CONSERVATORY

Johns Hopkins University

The mission of the Peabody Conservatory is to elevate the human experience through leadership at the intersection of art and education.

## WHAT MAKES THIS SCHOOL UNIQUE?

At the Peabody Conservatory, we are a community of 21st-century artists—cultivating excellence, embracing new ideas, and committed to the future of music in our world.

**LOCATION** 1 East Mount Vernon Place  
Baltimore, MD 21202  
UNITED STATES  
[www.peabody.jhu.edu](http://www.peabody.jhu.edu)

**ADMISSIONS** 667-208-6600  
[peabodyadmissions@jhu.edu](mailto:peabodyadmissions@jhu.edu)

**Audition Requirements** [Audition Requirements](#)

**FINANCIAL INFORMATION**  
[Tuition & Fees](#) / [Financial Aid & Scholarships](#)

**CAREER / POST-GRADUATION ASSISTANCE**  
[LAUNCHPad](#), Peabody's comprehensive career services office, helps students and recent alumni forge successful careers. We help pinpoint artistic and professional objectives, build career skills, identify opportunities, prepare job applications, launch entrepreneurial ventures, develop websites, raise funds, organize concert tours, and much more.



**KEY STATISTICS** (college level and above)  
**748** music students  
**Music Faculty:** 75 full time, 100 adjunct  
**580** scholarships awarded

## AREAS OF STUDY

Brass • Composition (Performance) • Conducting  
• Early Music • Guitar • Jazz Studies & Contemporary Media • Music Business • Music Education  
• Musicology • Organ • Piano • Strings • Vocal Arts/Opera • Winds & Percussion • Acoustics • Chamber Music • Computer Music • Dance • Directed Studies  
• Music for New Media • Pedagogy • Recording Arts and Sciences • Vocal Accompanying

## DEGREE PROGRAMS

[Undergraduate Programs](#) / [Graduate Programs](#)

**ADDITIONAL PROGRAMS** (non-matriculating/prep)  
[Low-Residency Master of Music in Composition](#)  
[Computer Music](#)

## ONLINE COURSES

[Online courses information](#)  
Up to 25% will be available as hybrid or online-only courses

## PANDEMIC & SAFETY: SCHOOL POLICIES

[Policies & Procedures for this school](#)  
Proof of vaccination required? (✓=Yes ✗=No)  
✓ Students ✓ Faculty ✓ Staff

**SOCIAL LINKS**    

Refine your  
artistry, create  
opportunities, and  
lead the way in a  
changing world.

At the Peabody Conservatory,  
you'll study with renowned  
faculty and forge a performing  
arts career as unique as you are.



[peabody.jhu.edu](http://peabody.jhu.edu)  
667-208-6600





# PRISMA

Pacific Region International Summer Music Association  
FESTIVAL & ACADEMY



**JUNE 17-29, 2024 • POWELL RIVER, BRITISH COLUMBIA, CANADA**

<p><b>SYMPHONY PERFORMANCES</b> <b>MASTERCLASSES</b> <b>CHAMBER MUSIC CONCERTS</b> <b>RECITALS &amp; WORKSHOPS</b></p>	<p><b>CONCERTO COMPETITION</b> <b>AUDITION TRAINING</b> <b>PRIVATE LESSONS</b> <b>CAREER COACHING</b></p>
--	---

**SUBSTANTIAL FULL & PARTIAL SCHOLARSHIPS ARE AVAILABLE**

**LEARN MORE AT PRISMAFESTIVAL.COM**

## PECK SCHOOL OF THE ARTS

University of Wisconsin-Milwaukee

### WHAT MAKES THIS SCHOOL UNIQUE?

Music at UW-Milwaukee offers comprehensive undergraduate and graduate education and is the largest professional degree granting music department in the UW System. Our renowned artist faculty and alumni perform with the Milwaukee Symphony Orchestra, the Lyric Opera of Chicago, the Florentine Opera, Present Music, and more.

### LOCATION

UWM Department of Music  
PO Box 413  
Milwaukee, WI 53201  
UNITED STATES  
[uwm.edu/arts](http://uwm.edu/arts)

### ADMISSIONS

414-229-4763  
[music-info@uwm.edu](mailto:music-info@uwm.edu)

### FINANCIAL INFORMATION

[Tuition & Fees](#)

### CAREER / POST-GRADUATION ASSISTANCE

UW-Milwaukee offers a comprehensive [Career Planning and Resource Center](#)

### KEY STATISTICS (college level and above)

**300** music students

**Music Faculty:** **15** full time, **30** adjunct

### AREAS OF STUDY

Brass • Collaborative Piano • Composition (Performance) • Conducting • Guitar • Music Education • Musicology • Piano • Strings • Vocal Arts/Opera • Winds & Percussion

### DEGREE PROGRAMS

[Undergraduate Programs](#) / [Graduate Programs](#)

*Additional details:* Master of Music/Master of Library and Information Sciences (integrated degree)

### ONLINE COURSES

[Online courses information](#)

Up to 25% will be available as hybrid or online-only courses

### PANDEMIC & SAFETY: SCHOOL POLICIES

[Policies & Procedures for this school](#)

Proof of vaccination required? (✓=Yes ✗=No)

✗ Students ✗ Faculty ✗ Staff

### SOCIAL LINKS



# ROYAL COLLEGE OF MUSIC

We are here to support you as an artist. Our professors represent the best international talent with many performing as principal players with London's major orchestras and ensembles. We offer state-of-the-art performance spaces, advanced digital recording studios, a unique on-site Museum with access to extraordinary collections and extensive number of practice pods. Last year alone, we provided over 300 performance placements, over 90 teaching opportunities, and offered up to £29,000 grant awards for upcoming graduates to launch or develop an initiative.

## WHAT MAKES THIS SCHOOL UNIQUE?

The RCM is one of the world's greatest conservatoires. Nurturing exceptional musical talent for more than 140 years, students join a friendly, collaborative, and global community. Ranked the top institution for performing arts for 2023 and 2022 in the QS World University Rankings by Subject.

**LOCATION** Royal College of Music  
Prince Consort Road  
London SW7 2BS  
UNITED KINGDOM  
[www.rcm.ac.uk](http://www.rcm.ac.uk)

**ADMISSIONS** +44 (0)20 7591 4300  
[admissions@rcm.ac.uk](mailto:admissions@rcm.ac.uk)

**Audition Requirements** [Audition Requirements](#)  
Audition requirements are set by each faculty.



## FINANCIAL INFORMATION

[Tuition & Fees](#) / [Financial Aid & Scholarships](#)

## CAREER / POST-GRADUATION ASSISTANCE

The RCM is a world leader in career development for musicians. Our dedicated [Creative Careers Centre](#) will guide you through a range of opportunities that mirror the professional world. You can use these services from day one of your course, to develop an outstanding CV and wealth of experience, to five years after graduation.

## KEY STATISTICS (college level and above)

950 music students  
Music Faculty: 45 full time, 300 adjunct

## AREAS OF STUDY

Brass • Collaborative Piano • Composition (Performance) • Conducting • Early Music • Guitar • Music Education • Music Therapy • Organ • Piano • Strings • Vocal Arts/Opera • Winds & Percussion • Composition for Screen

## DEGREE PROGRAMS

[Undergraduate Programs](#) / [Graduate Programs](#)

## PANDEMIC & SAFETY: SCHOOL POLICIES

[Policies & Procedures for this school](#)

Proof of vaccination required? (✓=Yes ✗=No)  
✗ Students ✗ Faculty ✗ Staff

**SOCIAL LINKS**    



# BE THE FUTURE OF MUSIC

**At the Royal College of Music, there are no limits to what you can experience:**

- Extraordinary performance opportunities and connections to the music industry
- World-renowned professors
- State-of-the-art performance spaces and digital technologies
- A friendly, supportive international community of like-minded musicians
- An unrivalled location in the heart of London's cultural South Kensington

Apply now [www.rcm.ac.uk/rcmstudy](http://www.rcm.ac.uk/rcmstudy)

Royal College of Music, Prince Consort Road,  
London SW7 2BS, United Kingdom

**GLOBAL  
NO.1**  
FOR PERFORMING ARTS

QS World University Rankings by Subject 2023





## ROYAL CONSERVATOIRE OF SCOTLAND

### WHAT MAKES THIS SCHOOL UNIQUE?

RCS is a global leader in performing arts education (QS World University Rankings 2023) and the only place in Europe where you can study all of the performing arts on one campus. You'll benefit from side-by-side opportunities with world-class orchestras and work with award-winning staff and internationally acclaimed visiting artists.

### LOCATION

The Royal Conservatoire of Scotland  
100 Renfrew Street  
Glasgow G2 3DB  
SCOTLAND  
[www.rcs.ac.uk](http://www.rcs.ac.uk)

**ADMISSIONS** +44 141 332 4101  
[admissions@rcs.ac.uk](mailto:admissions@rcs.ac.uk)

### Audition Requirements

Audition requirements vary from course to course, [full details can be found on each specific degree page](#).

### FINANCIAL INFORMATION

[Tuition & Fees](#) / [Financial Aid & Scholarships](#)

### CAREER / POST-GRADUATION ASSISTANCE

[Students will be given opportunities to perform in side-by-side concerts](#) with the likes of the Royal Scottish National Orchestra and Scottish Ensemble. Our Vocal Studies and Opera students will also receive masterclasses from Scottish Opera and have the chance throughout their studies to work with the company.

**KEY STATISTICS** (college level and above)  
**750** music students

**Music Faculty:** **60** full time, **131** adjunct

### AREAS OF STUDY

Brass • Composition (Performance) • Conducting  
• Guitar • Jazz Studies & Contemporary Media  
• Music Education • Piano • Strings • Vocal Arts/Opera  
• Winds & Percussion • Timpani • Traditional Music  
• Traditional Music (Piping)

### DEGREE PROGRAMS

[Undergraduate Programs](#) / [Graduate Programs](#)

### PANDEMIC & SAFETY: SCHOOL POLICIES

Proof of vaccination required? (✓=Yes ✗=No)  
✗ Students ✗ Faculty ✗ Staff

### SOCIAL LINKS



## SAN FRANCISCO CONSERVATORY OF MUSIC

### WHAT MAKES THIS SCHOOL UNIQUE?

With its new [Bowes Center](#), alliances with Opus 3 Artists, Askonas Holt, and Pentatone, star faculty, and partnerships with Bay Area performing arts institutions and tech companies, SFCM provides students with unparalleled opportunities to develop themselves, their music, and their careers in the heart of the city.

**LOCATION** 50 Oak Street  
San Francisco, CA 94102  
UNITED STATES  
[sfc.edu](http://sfc.edu)

**ADMISSIONS** 800-899-SFCM (7326)  
[apply@sfc.edu](mailto:apply@sfc.edu)

**Audition Requirements** [Audition Requirements](#)

### FINANCIAL INFORMATION

[Tuition & Fees](#) / [Financial Aid & Scholarships](#) [

### CAREER / POST-GRADUATION ASSISTANCE

The [Professional Development and Engagement Center \(PDEC\)](#) offers students gig opportunities, internships, a grant service, access to employment listings, and a host of courses focused on marketing, finance, teaching, and technology.

### KEY STATISTICS

 (college level and above)

**450** music students

**Music Faculty:** **21** full time, **48** adjunct  
*Scholarship details:* 100% of full-time students receive aid; the average scholarship covers 57% of tuition

### AREAS OF STUDY

Arts Leadership • Brass • Collaborative Piano  
• Composition (Performance) • Conducting • Early Music • Guitar • Jazz Studies & Contemporary Media • Media studies (including audio and video production) • Music Business • Music Education  
• Musicology • Music Therapy • Organ • Piano  
• Strings • Vocal Arts/Opera • Winds & Percussion  
• Chamber Music • Technology and Applied Composition

### DEGREE PROGRAMS

[Undergraduate Programs](#) / [Graduate Programs](#)

### ADDITIONAL PROGRAMS

 (non-matriculating/prep)

[Rubin Institute for Music Criticism](#)  
[Center for Innovative Leadership](#)  
[Pre-College](#)

### ONLINE COURSES

[Online courses information](#)

Additional plans under consideration

### PANDEMIC & SAFETY: SCHOOL POLICIES

[Policies & Procedures for this school](#)

Proof of vaccination required? (✓=Yes ✗=No)  
✓ Students ✓ Faculty ✓ Staff

### SOCIAL LINKS



## SCHULICH SCHOOL OF MUSIC

### McGill University

#### WHAT MAKES THIS SCHOOL UNIQUE?

The Schulich School of Music of McGill University offers the highest calibre of teaching and learning, grounded in exceptional performance and research, in an inclusive and inspiring environment. We are located in Montréal Canada, also known as Canada's cultural capital. Classes are taught in English.

**LOCATION** 527 Sherbrooke St W  
Montréal, QC H3A1E3  
CANADA  
[www.mcgill.ca/music](http://www.mcgill.ca/music)

**ADMISSIONS** 514-398-4991  
[recruitment.music@mcgill.ca](mailto:recruitment.music@mcgill.ca)

**Audition Requirements** [Audition Requirements](#)

**FINANCIAL INFORMATION**  
[Tuition & Fees](#)

#### CAREER / POST-GRADUATION ASSISTANCE

[Career Assistance](#)

**KEY STATISTICS** (college level and above)  
**850** music students

**Music Faculty:** **80** full time, **120** adjunct

#### AREAS OF STUDY

Brass • Collaborative Piano • Composition (Performance) • Conducting • Early Music • Guitar • Jazz Studies & Contemporary Media • Music Education • Musicology • Organ • Piano • Strings • Vocal Arts/Opera • Winds & Percussion

#### DEGREE PROGRAMS

[Undergraduate Programs](#) / [Graduate Programs](#)

#### PANDEMIC & SAFETY: SCHOOL POLICIES

Proof of vaccination required? (✓=Yes ✗=No)  
✗ Students ✗ Faculty ✗ Staff

#### SOCIAL LINKS



## SHENANDOAH CONSERVATORY

### Shenandoah University

#### WHAT MAKES THIS SCHOOL UNIQUE?

Shenandoah Conservatory offers rigorous professional training in music, theatre and dance, with extensive performance opportunities, collaborative and interdisciplinary experiences, and close mentoring relationships with exceptionally accomplished faculty.

**LOCATION** 1460 University Drive  
Winchester, VA 22601  
UNITED STATES  
[www.su.edu/conservatory](http://www.su.edu/conservatory)

**ADMISSIONS** 540-665-4581  
[admit@su.edu](mailto:admit@su.edu)

**Audition Requirements** [Audition Requirements](#)

**FINANCIAL INFORMATION**  
[Tuition & Fees](#) / [Financial Aid & Scholarships](#)

#### CAREER / POST-GRADUATION ASSISTANCE

Shenandoah University's [Services Office](#) provides a comprehensive range of services and resources to support career exploration and professional growth of SU students. Services include experiential learning through internships, volunteer, summer, and part-time opportunities, résumé building, interview skills workshops, and graduate school and job search assistance.

**KEY STATISTICS** (college level and above)  
**380** music students

**Music Faculty:** **41** full time, **32** adjunct

#### AREAS OF STUDY

Arts Leadership • Brass • Collaborative Piano • Composition (Performance) • Conducting • Guitar • Jazz Studies & Contemporary Media • Media studies (including audio and video production) • Music Business • Music Education • Musicology • Music Therapy • Piano • Strings • Vocal Arts/Opera • Winds & Percussion • Contemporary Musicianship & Entrepreneur Development • Vocal Pedagogy, Classical • Vocal Pedagogy, Contemporary Commercial Music • Dance • Acting • Musical Theatre • Musical Theatre Accompanying • Theatre Design & Production

#### DEGREE PROGRAMS

[Undergraduate Programs](#) / [Graduate Programs](#)

#### ADDITIONAL PROGRAMS (non-matriculating/prep)

[Ensembles](#)  
[ShenCoLAB](#)  
[Global Citizenship Project](#)

#### ONLINE COURSES

[Online courses information](#)

Up to 25% will be available as hybrid or online-only courses

#### PANDEMIC & SAFETY: SCHOOL POLICIES

Proof of vaccination required? (✓=Yes ✗=No)  
✗ Students ✗ Faculty ✗ Staff

#### SOCIAL LINKS





## THE SHEPHERD SCHOOL OF MUSIC

### Rice University

#### WHAT MAKES THIS SCHOOL UNIQUE?

The Shepherd School of Music provides a dedicated faculty of artist-teachers, extraordinary performance opportunities, beautiful facilities, and an unparalleled education at a renowned private university.

**LOCATION** 6100 Main Street, entrance 18  
Houston, TX 77005  
UNITED STATES  
[music.rice.edu](http://music.rice.edu)

**ADMISSIONS** 713-348-4854  
[musi@rice.edu](mailto:musi@rice.edu)

#### Audition Requirements

[Undergraduate audition requirements](#)  
[Graduate audition requirements](#)

#### FINANCIAL INFORMATION

[Tuition & Fees](#) / [Financial Aid & Scholarships](#)

#### CAREER / POST-GRADUATION ASSISTANCE

To ensure that our students are fully prepared to meet the demands of the profession, we have created an instructional area entitled [Music Career and Skills Enhancement](#). Specific courses are designed to complement the Shepherd School's superb musical and academic training to help students transition to professional life. Additionally, Rice University's Center for Career Development supports alumni through career counseling and access to career resources.

**KEY STATISTICS** (college level and above)  
**264** music students  
**Music Faculty: 48** full time, **0** adjunct

#### AREAS OF STUDY

Brass • Collaborative Piano • Composition (Performance) • Conducting • Musicology • Organ • Piano • Strings • Vocal Arts/Opera • Winds & Percussion • Piano Chamber Music and Accompanying

#### DEGREE PROGRAMS

[Undergraduate Programs](#) / [Graduate Programs](#)

#### PANDEMIC & SAFETY: SCHOOL POLICIES

Proof of vaccination required? (✓=Yes ✗=No)  
✗ Students ✗ Faculty ✗ Staff

**SOCIAL LINKS**    

## THE ORCHESTRA NOW

### Bard College

#### WHAT MAKES THIS SCHOOL UNIQUE?

Pre-professional orchestra that combines performance with rigorous study of the humanities; three-year Master's Degree or two-year Advanced Certificate; full-tuition fellowship and bi-weekly stipend; world-renowned guest conductors; regular performances at Carnegie Hall, Lincoln Center, and The Metropolitan Museum of Art.

**LOCATION** 30 Campus Road  
Annandale-on-Hudson, NY 12504  
UNITED STATES  
[ton.bard.edu](http://ton.bard.edu)

**ADMISSIONS** 845-752-2422  
[orchnow@bard.edu](mailto:orchnow@bard.edu)

**Audition Requirements** [Audition Requirements](#)

#### FINANCIAL INFORMATION

[Tuition & Fees](#)

**CAREER / POST-GRADUATION ASSISTANCE**  
Audition prep class; professional development seminars

**KEY STATISTICS** (college level and above)  
**74** music students  
**Music Faculty: 6** full time, **1** adjunct  
*Scholarship details:* \$68,000 per year

#### AREAS OF STUDY

Brass • Strings • Winds & Percussion

#### DEGREE PROGRAMS

Master of Music in Curatorial, Critical, and Performance Studies; Advanced Certificate in Orchestral Studies

#### PANDEMIC & SAFETY: SCHOOL POLICIES

Proof of vaccination required? (✓=Yes ✗=No)  
✓ Students ✓ Faculty ✓ Staff

**SOCIAL LINKS**    

## THE TIANJIN JUILLIARD SCHOOL

### The Juilliard School

#### WHAT MAKES THIS SCHOOL UNIQUE?

The Tianjin Juilliard School specifically focuses on collaborative musicianship, emphasizing a commitment to ensemble playing of the highest artistic level. Our programs reflect the best educational standards, preparing students for a lifetime of creative expression, of engagement and growth as an individual and as a musician.

#### LOCATION

The Tianjin Juilliard School  
2946 Xinhua Road, Binhai New Area  
Tianjin 300450  
CHINA  
[www.tianjinjuilliard.edu.cn](http://www.tianjinjuilliard.edu.cn)

**ADMISSIONS** 212-299-5000 x7642  
[admissions@tianjinjuilliard.edu.cn](mailto:admissions@tianjinjuilliard.edu.cn)

**Audition Requirements** [Audition Requirements](#)

#### FINANCIAL INFORMATION

[Tuition & Fees](#) / [Financial Aid & Scholarships](#)

#### KEY STATISTICS (college level and above)

**70** music students  
**Music Faculty:** **24** full time, **0** adjunct  
*Scholarship details:* \$48,500 USD. 95% of students receive financial aid in the form of institutional scholarships.

#### AREAS OF STUDY

Brass • Collaborative Piano • Piano • Strings • Winds & Percussion

#### DEGREE PROGRAMS

[Graduate Programs](#)

#### ADDITIONAL PROGRAMS (non-matriculating/prep)

[Pre-College](#)

#### PANDEMIC & SAFETY: SCHOOL POLICIES

[Policies & Procedures for this school](#)  
Proof of vaccination required? (✓=Yes ✗=No)  
✗ Students ✗ Faculty ✗ Staff

#### SOCIAL LINKS



## TOWNSEND SCHOOL OF MUSIC

### Mercer University

#### WHAT MAKES THIS SCHOOL UNIQUE?

World-class Center for Strings program, recognized level of excellence and performance, and outstanding guest artist series.

#### LOCATION

1501 Mercer University Drive  
Macon, GA 31207  
[music.mercer.edu](http://music.mercer.edu)

#### ADMISSIONS

800-840-8577  
[admissions@mercer.edu](mailto:admissions@mercer.edu)

**Audition Requirements** [Audition Requirements](#)

#### FINANCIAL INFORMATION

[Tuition & Fees](#) / [Financial Aid & Scholarships](#)

#### CAREER / POST-GRADUATION ASSISTANCE

[Center for Career and Professional Development](#)

#### KEY STATISTICS (college level and above)

**80** music students  
**Music Faculty:** **17** full time, **15** adjunct  
**80** scholarships awarded  
*Scholarship details:* \$35,000

#### AREAS OF STUDY

Brass • Collaborative Piano • Conducting • Guitar  
• Music Education • Organ • Piano • Strings • Vocal  
Arts/Opera • Winds & Percussion

#### ONLINE COURSES

[Online courses information](#)  
Up to 25% will be available as hybrid or online-only courses

#### PANDEMIC & SAFETY: SCHOOL POLICIES

Proof of vaccination required? (✓=Yes ✗=No)  
✗ Students ✗ Faculty ✗ Staff

#### SOCIAL LINKS





# TRINITY LABAN CONSERVATOIRE OF MUSIC AND DANCE

Trinity Laban is unique. As London's Creative Conservatoire it is an internationally celebrated center of excellence, offering world-class training in dance, music, and musical theatre. Trinity Laban identifies, supports, and develops a diverse intake of talented performers and creators, wherever they may be in their creative lives. The supportive atmosphere, global community, outstanding landmark buildings, and innovative curriculum at Trinity Laban instill technical excellence and enable creativity to flourish, transforming those with potential into resourceful, enterprising, and adaptable artistic leaders. Trinity Laban also provides exciting opportunities for the public to encounter dance and music, and to access arts health programs.

**LOCATION** King Charles Court  
Old Royal Naval College  
London SE10 9JF  
UNITED KINGDOM  
[www.trinitylaban.ac.uk](http://www.trinitylaban.ac.uk)

**ADMISSIONS** +44 (0)20 8305 4444  
[admissions@trinitylaban.ac.uk](mailto:admissions@trinitylaban.ac.uk)

**Audition Requirements** [Audition Requirements](#)

## TRINITY LABAN CONSERVATOIRE OF MUSIC & DANCE

### FINANCIAL INFORMATION

[Tuition & Fees](#) / [Financial Aid & Scholarships](#)

### CAREER / POST-GRADUATION ASSISTANCE

[Career Assistance](#)

### KEY STATISTICS (college level and above)

550 music students

**Music Faculty:** 17 full time, 231 adjunct

200 scholarships awarded

*Scholarship details:* \$5,400 - \$6000

### AREAS OF STUDY

Brass • Collaborative Piano • Composition (Performance) • Guitar • Jazz Studies & Contemporary Media • Music Education • Piano • Strings • Vocal Arts/Opera • Winds & Percussion • Musical Theatre • Popular Music—Music Performance and Industry • Contemporary Dance • Ensemble Artistry • Performer-Composer

### ADDITIONAL PROGRAMS (non-matriculating/prep)

[Musical Theatre](#)

[BA \(Honors\) Music Performance and Industry](#)

### ONLINE COURSES

[Online courses information](#)

Up to 25% will be available as hybrid or online-only courses

### PANDEMIC & SAFETY: SCHOOL POLICIES

[Policies & Procedures for this school](#)

Proof of vaccination required? (✓=Yes ✗=No)

✗ Students ✗ Faculty ✗ Staff

### SOCIAL LINKS



## Dance / Music / Musical Theatre

Undergraduate, graduate  
and diploma programs

# TRINITY LABAN

London's creative  
conservatoire



#chooseTL

Choose world-class  
teaching in our global  
community in London.

Apply now for 2024 entry  
[trinitylaban.ac.uk](http://trinitylaban.ac.uk)





# Oberlin

## OPENING A WORLD OF POSSIBILITIES

At Oberlin, students are guided along diverse routes by expert faculty mentors. They are inspired through individualized instruction in studios and classes that launch compelling performances. And they are supported by campus resources that make imaginative projects possible.

\$10K Commitment Scholarship  
\$5K Guaranteed Summer Project Support  
Learn more at [oberlin.edu/conservatory](https://oberlin.edu/conservatory)

## UCLA HERB ALPERT SCHOOL OF MUSIC

University of California, Los Angeles

### WHAT MAKES THIS SCHOOL UNIQUE?

The UCLA Herb Alpert School of Music leads in performance, scholarship, and innovation. Our programs in Ethnomusicology, Music, Musicology, Music Industry, and Global Jazz Studies offer leading-edge scholarship alongside performance mastery and composition. Students are encouraged to explore music in all of its historical, global, and modern diversity.

**LOCATION** 445 Charles E. Young Drive East  
2520 Schoenberg Music Building  
Los Angeles, CA 90095  
UNITED STATES  
[www.schoolofmusic.ucla.edu](http://www.schoolofmusic.ucla.edu)

### ADMISSIONS

310-825-4761  
[uclaalpert@schoolofmusic.ucla.edu](mailto:uclaalpert@schoolofmusic.ucla.edu)

### Audition Requirements

[Undergraduate audition requirements](#)  
[Graduate audition requirements](#)

### FINANCIAL INFORMATION

[Tuition & Fees](#) / [Financial Aid & Scholarships](#)

### CAREER / POST-GRADUATION ASSISTANCE

The [UCLA Career Center](#) is one of the largest and most comprehensive career centers in the nation. It offers a wide range of services that help students explore their professional interests; provide them with the knowledge, skills, resources, and

experience necessary to pursue professional goals with confidence and self-assurance; and facilitate connections with employers, alumni, and graduate school representatives. The Career Center, in collaboration with the School of Music faculty and staff, meets the unique needs of our students by providing programs and counseling services specific to careers in the arts.

### KEY STATISTICS (college level and above)

653 music students  
**Music Faculty:** 45 full time, 20 adjunct  
275 scholarships awarded

### AREAS OF STUDY

Brass • Collaborative Piano • Composition (Performance) • Conducting • Early Music • Guitar • Jazz Studies & Contemporary Media • Music Business • Music Education • Musicology • Music Therapy • Organ • Piano • Strings • Vocal Arts/Opera • Winds & Percussion • Ethnomusicology • Music Industry

### DEGREE PROGRAMS

[Undergraduate Programs](#) / [Graduate Programs](#)

### PANDEMIC & SAFETY: SCHOOL POLICIES

[Policies & Procedures for this school](#)

Proof of vaccination required? (✓=Yes ✗=No)  
✓ Students ✓ Faculty ✓ Staff

**SOCIAL LINKS** [Twitter](#) [Facebook](#) [YouTube](#) [Instagram](#) [LinkedIn](#)



# UNIVERSITY OF CINCINNATI COLLEGE- CONSERVATORY OF MUSIC (CCM)

Nationally ranked and internationally renowned, the University of Cincinnati College-Conservatory of Music (CCM) is a preeminent institution for the performing and media arts. The school's educational roots date back to 1867, and a solid, visionary instruction has been at its core since that time.

## WHAT MAKES THIS SCHOOL UNIQUE?

CCM provides life-changing experiences within a highly creative and multidisciplinary artistic environment. CCM offers nine degree types (BA, BM, BFA, MFA, MM, MA, AD, DMA, PhD) in more than 100 possible majors.

**LOCATION** PO Box 210003  
- or -  
290 CCM Boulevard  
Cincinnati, OH 45221-0003  
UNITED STATES  
[ccm.uc.edu](http://ccm.uc.edu)

**ADMISSIONS** 513-556-9479  
[ccmadmis@uc.edu](mailto:ccmadmis@uc.edu)

**Audition Requirements** [Audition Requirements](#)

**FINANCIAL INFORMATION**  
[Tuition & Fees](#) / [Financial Aid & Scholarships](#)

**CAREER / POST-GRADUATION ASSISTANCE**  
Professional development and entrepreneurial acumen are an important part of the CCM experience. Faculty mentorship along with the



Managing Professional Performance Careers course provide a foundation for transitioning to life after graduation.

**KEY STATISTICS** (college level and above)  
**968** music students  
**Music Faculty:** **77** full time, **54** adjunct  
**872** scholarships awarded

## AREAS OF STUDY

Arts Leadership • Brass • Collaborative Piano  
• Composition (Performance) • Conducting • Guitar  
• Jazz Studies & Contemporary Media • Media studies (including audio and video production)  
• Music Business • Music Education • Musicology  
• Organ • Piano • Strings • Vocal Arts/Opera • Winds & Percussion • Acting • Arts Administration • Ballet  
• Commercial Music Production • Media Production  
• Music History • Musical Theatre • Theatre Design and Production

**DEGREE PROGRAMS**  
[Undergraduate Programs](#) / [Graduate Programs](#)

**ADDITIONAL PROGRAMS** (non-matriculating/prep)  
[Summer Programs](#)  
[CCM Prep Programs](#)

**ONLINE COURSES**  
[Online courses information](#)  
Up to 25% will be available as hybrid or online-only courses

**PANDEMIC & SAFETY: SCHOOL POLICIES**  
[Policies & Procedures for this school](#)  
Proof of vaccination required? (✓=Yes ✗=No)  
✗ Students ✗ Faculty ✗ Staff

**SOCIAL LINKS**     



**“one of this country’s leading conservatories.”**  
- The New York Times

# WELCOME TO YOUR NEXT STAGE.

**Tomorrow’s arts leaders and luminaries get their start at UC’s nationally ranked and internationally renowned College-Conservatory of Music.**

CCM offers students unparalleled opportunities to perform, learn and live in a thriving, next-generation city known for its intense interest in the arts.

Experience **leading-edge facilities, distinguished faculty and world-class ensembles.** Access **professional development and performance opportunities** with the region’s many notable arts organizations.

A fabulous campus, classrooms without boundaries and unlimited opportunity. **Your future is calling. Take your next step at [ccm.uc.edu](http://ccm.uc.edu).**

**#NextLivesHere**

University of Cincinnati  
**CINCINNATI | CCM**

## UNIVERSITY OF COLORADO BOULDER COLLEGE OF MUSIC

### University of Colorado Boulder

#### WHAT MAKES THIS SCHOOL UNIQUE?

Founded in 1920, the college offers a wide range of programs uniquely combining advanced musical training with professionally oriented experiences and the rich resources of a leading research university. Active as award-winning professional performers, composers, and scholars, faculty members are committed to helping students develop their talents.

**LOCATION** 301 UCB  
Boulder, CO 80309  
UNITED STATES  
[www.colorado.edu/music/](http://www.colorado.edu/music/)

**ADMISSIONS** 303-492-8468  
[ugradmus@colorado.edu](mailto:ugradmus@colorado.edu)

**Audition Requirements** [Audition Requirements](#)

**FINANCIAL INFORMATION**  
[Tuition & Fees](#) / [Financial Aid & Scholarships](#)

**CAREER / POST-GRADUATION ASSISTANCE**  
With the arts business undergoing enormous changes in how content is produced, distributed, and consumed, CU Boulder's [Entrepreneurship Center for Music](#) is a cornerstone of our program. Through the ECM, students are encouraged to develop entrepreneurial skills to explore the vast opportunities inherent in a changing marketplace and develop plans to implement career-enhancing ventures across the artistic spectrum.

#### KEY STATISTICS (college level and above)

**550** music students  
**Music Faculty:** 60 full time, 30 adjunct

#### AREAS OF STUDY

Arts Leadership • Brass • Collaborative Piano • Composition (Performance) • Conducting • Early Music • Guitar • Jazz Studies & Contemporary Media • Media studies (including audio and video production) • Music Business • Music Education • Musicology • Music Therapy • Organ • Piano • Strings • Vocal Arts/Opera • Winds & Percussion • Musical Theatre

#### DEGREE PROGRAMS

[Undergraduate Programs](#) / [Graduate Programs](#)

**ADDITIONAL PROGRAMS** (non-matriculating/prep)  
[Music Buff Alumni Network](#)

#### PANDEMIC & SAFETY: SCHOOL POLICIES

Proof of vaccination required? (✓=Yes ✗=No)  
✗ Students ✗ Faculty ✗ Staff

**SOCIAL LINKS**    

## UNIVERSITY OF GOTHENBURG ACADEMY OF MUSIC AND DRAMA

#### WHAT MAKES THIS SCHOOL UNIQUE?

The Academy of Music and Drama trains and educates composers, musicians in many genres, opera-singers, music, dance, and theatre teachers, musical theatre artists, performance artists, and actors. Research within artistic and pedagogical practices also takes place at the academy.

**LOCATION** Eklandagatan 86, SE 412 61  
PO Box 210, SE 405 30  
Göteborg  
SWEDEN  
[www.gu.se/en/music-drama](http://www.gu.se/en/music-drama)

**ADMISSIONS** +46 31-786 00 00  
[utbildningsexpedition@hsm.gu.se](mailto:utbildningsexpedition@hsm.gu.se)

**Audition Requirements**  
[Information about audition requirements](#) can be found on the specific program webpages.

**FINANCIAL INFORMATION**  
[Tuition & Fees](#) / [Financial Aid & Scholarships](#)

#### CAREER / POST-GRADUATION ASSISTANCE

[Career assistance for alumni](#)

#### KEY STATISTICS (college level and above)

**600** music students  
**Music Faculty:** 100 full time, 50 adjunct

#### AREAS OF STUDY

Brass • Collaborative Piano • Composition (Performance) • Jazz Studies & Contemporary Media • Music Education • Organ • Piano • Strings • Vocal Arts/Opera • Winds & Percussion • Church Music Performance • Individual Performance • Music and Sound Production • Choral Conducting • Symphonic Orchestra Performance

#### PANDEMIC & SAFETY: SCHOOL POLICIES

Proof of vaccination required? (✓=Yes ✗=No)  
✗ Students ✗ Faculty ✗ Staff

**SOCIAL LINKS**   

## UNIVERSITY OF ILLINOIS SCHOOL OF MUSIC

University of Illinois at Urbana-Champaign

### WHAT MAKES THIS SCHOOL UNIQUE?

Beautiful facilities including the Krannert Center for the Performing Arts. Inclusive community with supportive faculty. Individual attention for students. Diverse Big 10 campus with wide-ranging performance and research opportunities.

**LOCATION** 1114 West Nevada Street  
Urbana, IL 61801  
UNITED STATES  
[music.illinois.edu](http://music.illinois.edu)

**ADMISSIONS** 217-244-7899  
[MusicAdmissions@illinois.edu](mailto:MusicAdmissions@illinois.edu)

**Audition Requirements** [Audition Requirements](#)

### FINANCIAL INFORMATION

[Tuition & Fees](#) / [Financial Aid & Scholarships](#)

### CAREER / POST-GRADUATION ASSISTANCE

The School of Music and the College of Fine + Applied Arts are dedicated to preparing our students for successful careers in their fields. The [Career Services Office](#) offers workshops, job fairs, hands-on sessions, and individual appointments for professional feedback, individualized career planning sessions, and instruction in writing cover letters and résumés. The School of Music hosts a number of entrepreneurship events each year to help students develop important business and marketing skills.

### KEY STATISTICS (college level and above)

**725** music students

**Music Faculty:** **90** full time, **0** adjunct

### AREAS OF STUDY

Brass • Collaborative Piano • Composition (Performance) • Conducting • Guitar • Jazz Studies & Contemporary Media • Media studies (including audio and video production) • Music Education • Musicology • Organ • Piano • Strings • Vocal Arts/Opera • Winds & Percussion • Choral Conducting • Computer Science + Music • Instrumental Performance • Lyric Theatre • Music Technology • Open Studies • Piano Pedagogy • Vocal Coaching and Accompanying • Vocal Performance • Wind Band Conducting

### DEGREE PROGRAMS

[Undergraduate Programs](#) / [Graduate Programs](#)

### ADDITIONAL PROGRAMS (non-matriculating/prep)

[Illinois Summer Youth Music](#)

### ONLINE COURSES

Up to 25% will be available as hybrid or online-only courses

### PANDEMIC & SAFETY: SCHOOL POLICIES

[Policies & Procedures for this school](#)

Proof of vaccination required? (✓=Yes ✗=No)

✗ Students ✗ Faculty ✗ Staff

### SOCIAL LINKS



## UNIVERSITY OF MARYLAND SCHOOL OF MUSIC

### WHAT MAKES THIS SCHOOL UNIQUE?

The University of Maryland School of Music is innovative, inclusive, and community-focused. We offer a professional music education with all of the opportunities provided by a major research institution.

**LOCATION** 2110 The Clarice  
College Park, MD 20742  
UNITED STATES  
[music.umd.edu](http://music.umd.edu)

**ADMISSIONS** 301-405-8435  
[musicadmissions@umd.edu](mailto:musicadmissions@umd.edu)

**Audition Requirements** [Audition Requirements](#)

All undergraduate music programs require an audition. Graduate programs in performance and conducting also require an audition. Specific requirements by instrument can be found using the above link.

### FINANCIAL INFORMATION

[Tuition & Fees](#) / [Financial Aid & Scholarships](#)

### CAREER / POST-GRADUATION ASSISTANCE

Our [Be Worldwide, Get Worldready](#) initiative seamlessly integrates career development into your ARHU education so that your academic journey is intentional and prepares you for life after graduation, whether that means going on

the job market or continuing to graduate school. You'll encounter innovative areas of study, holistic advising, and access to opportunities and alumni in the Washington, DC-Baltimore region and beyond. It's no surprise that 96% of our students get jobs or go on to graduate school. Alumni have successful careers in a range of industries, including tech, business, government, arts and entertainment, non-profits, law, medicine, and computer science.

### KEY STATISTICS (college level and above)

**400** music students

**Music Faculty:** **39** full time, **51** adjunct

### AREAS OF STUDY

Arts Leadership • Brass • Collaborative Piano • Composition (Performance) • Conducting • Jazz Studies & Contemporary Media • Music Education • Musicology • Piano • Strings • Vocal Arts/Opera • Winds & Percussion • Ethnomusicology • Vocal Pedagogy

### DEGREE PROGRAMS

[Undergraduate Programs](#) / [Graduate Programs](#)

### PANDEMIC & SAFETY: SCHOOL POLICIES

[Policies & Procedures for this school](#)

Proof of vaccination required? (✓=Yes ✗=No)

✗ Students ✗ Faculty ✗ Staff

### SOCIAL LINKS





## UNIVERSITY OF MASSACHUSETTS AMHERST DEPARTMENT OF MUSIC & DANCE

### WHAT MAKES THIS SCHOOL UNIQUE?

UMass Amherst offers conservatory quality education in a university setting. Intensive yet supportive, the music program has a variety of concentrations as well as nationally and internationally renowned faculty dedicated to educating students. A top research university, UMass also enables other majors to be involved musically.

### LOCATION

273 Bromery Center for the Arts East  
University of Massachusetts  
Amherst, MA 01003

UNITED STATES

[www.umass.edu/music](http://www.umass.edu/music)

**ADMISSIONS** 413-545-6048  
[musicadmissions@umass.edu](mailto:musicadmissions@umass.edu)

### Audition Requirements

[Undergraduate audition requirements by instrument](#)

[Graduate audition requirements by instrument](#)

Prospective undergraduates must submit the Common App before signing up for an audition. Early Action is recommended. To sign up for an audition, students must submit an [online Music Application](#).

### FINANCIAL INFORMATION

[Tuition & Fees](#) / [Financial Aid & Scholarships](#)

### CAREER / POST-GRADUATION ASSISTANCE

[Career Services](#)

Lisa Blacher, assistant director of Career Development Services (HFA)

Email: [Career Assistance](#)

413-545-6152

### KEY STATISTICS (college level and above)

**273** music students

**Music Faculty: 43** full time, **2** adjunct

### AREAS OF STUDY

Brass • Collaborative Piano • Composition (Performance) • Conducting • Guitar • Jazz Studies & Contemporary Media • Music Education • Piano • Strings • Vocal Arts/Opera • Winds & Percussion • Music History

### DEGREE PROGRAMS

[Undergraduate Programs](#) / [Graduate Programs](#)

### ADDITIONAL PROGRAMS (non-matriculating/prep)

[The Arts Management Certificate for Campus Undergraduates](#)

### PANDEMIC & SAFETY: SCHOOL POLICIES

[Policies & Procedures for this school](#)

Proof of vaccination required? (✓=Yes ✗=No)

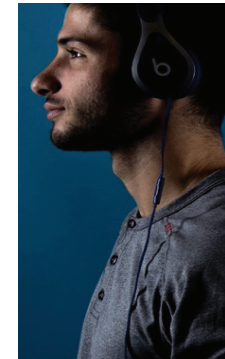
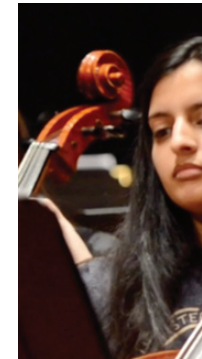
✓ Students ✓ Faculty ✓ Staff

### SOCIAL LINKS



## Northeastern University

Music at Northeastern University:  
for students destined to become change agents  
and thought leaders in industry, culture, and society



### Undergraduate Programs:

- B.A. in Music
- B.S. in Music Industry
- B.S. in Music Technology
- Combined majors in Music and Computer Information Science, Physics, Engineering, Game Design, Psychology, and Communication Studies
- Ten minors in music-specific disciplines

### Co-op and Dialogues of Civilization:

The Co-op program sets Northeastern apart from other institutions and leverages NU's excellence in experiential learning. Co-ops and Dialogues of Civilization provide direct, real-world engagement with industry, creative culture and practice across the globe, partnering with over 100 companies and organizations—recording labels, music publishing companies, media outlets, cultural centers and performing arts organizations. For more information visit:

<https://www.northeastern.edu/admissions/application-information/apply>

**Daniel Strong Godfrey**  
Professor and Chair  
Department of Music  
College of Arts, Media and Design  
351 Ryder Hall  
Northeastern University  
Boston, MA 02115  
[d.godfrey@northeastern.edu](mailto:d.godfrey@northeastern.edu)



## UNIVERSITY OF MASSACHUSETTS LOWELL DEPARTMENT OF MUSIC

### WHAT MAKES THIS SCHOOL UNIQUE?

We offer Bachelor of Music degrees in Sound Recording Technology, Music Business, Music Education, Music Performance, and Composition for New Media.

**LOCATION** Durgin Hall  
35 Wilder Street  
Lowell, MA 01854  
UNITED STATES  
[www.uml.edu/fahss/music](http://www.uml.edu/fahss/music)

**ADMISSIONS** 978-934-3931  
[admissions@uml.edu](mailto:admissions@uml.edu)

**Audition Requirements** [Audition Requirements](#)

**FINANCIAL INFORMATION**  
[Tuition & Fees](#) / [Financial Aid & Scholarships](#)

### CAREER / POST-GRADUATION ASSISTANCE

Internships in Music Business and Sound Recording Technology help provide job experience and placement.

**KEY STATISTICS** (college level and above)  
**400** music students  
**Music Faculty:** **16** full time, **45** adjunct

**AREAS OF STUDY**  
Composition (Performance) • Media studies (including audio and video production) • Music Business • Music Education • Composition for New Media • Music Performance (all instruments and voice)

**DEGREE PROGRAMS**  
[Undergraduate Programs](#) / [Graduate Programs](#)

**PANDEMIC & SAFETY: SCHOOL POLICIES**  
[Policies & Procedures for this school](#)  
Proof of vaccination required? (✓=Yes ✗=No)  
✗ Students ✗ Faculty ✗ Staff

**SOCIAL LINKS**   

## UNIVERSITY OF MICHIGAN SCHOOL OF MUSIC, THEATRE & DANCE

### WHAT MAKES THIS SCHOOL UNIQUE?

The School's unique relationship as a part of the U-M, ranked as one the top universities in the U.S., provides students with a vast array of options and opportunities. All of our degrees require some academic coursework, most of which can be selected from any area of the University.

**LOCATION** 1100 Baits Drive, 2290 Moore  
Ann Arbor, MI 48109  
UNITED STATES  
[smttd.umich.edu](http://smttd.umich.edu)

**ADMISSIONS** 734-764-0593  
[smttd.admissions@umich.edu](mailto:smttd.admissions@umich.edu)

**Audition Requirements** [Audition Requirements](#)

**FINANCIAL INFORMATION**  
[Tuition & Fees](#) / [Financial Aid & Scholarships](#)

**CAREER / POST-GRADUATION ASSISTANCE**  
The School of Music, Theatre & Dance [Excellence in Entrepreneurship, Career Empowerment & Leadership \(EXCEL\)](#) program provides entrepreneurship training and career services for all U-M students engaged in the performing arts. Our goal is to enable all our students to forge a viable career in the performing arts by exploring, developing, and leveraging their talents, training, skills, and ambitions. EXCEL serves U-M SMTD students and alumni through courses, co-curricular workshops, ongoing mentoring, and \$100,000 in student project and venture funding.

### KEY STATISTICS (college level and above)

**1150** music students  
**Music Faculty:** **150** full time, **75** adjunct

**AREAS OF STUDY**  
Arts Leadership • Brass • Collaborative Piano • Composition (Performance) • Conducting • Early Music • Jazz Studies & Contemporary Media • Media studies (including audio and video production) • Music Business • Music Education • Musicology • Organ • Piano • Strings • Vocal Arts/Opera • Winds & Percussion • Performing Arts Technology • Dance • Musical Theatre • Theatre

**ADDITIONAL PROGRAMS** (non-matriculating/prep)  
[Engagement & Outreach: Connecting with the Community](#)

**PANDEMIC & SAFETY: SCHOOL POLICIES**  
[Policies & Procedures for this school](#)  
Proof of vaccination required? (✓=Yes ✗=No)  
✓ Students ✗ Faculty ✗ Staff

**SOCIAL LINKS**    

## UNIVERSITY OF MUSIC FRANZ LISZT WEIMAR

### WHAT MAKES THIS SCHOOL UNIQUE?

The University of Music FRANZ LISZT is an internationally oriented university in Weimar, Germany. About 850 students from 50 countries are offered a broad selection of subjects in performance, music pedagogy, and musicology. The School sets benchmarks with its international master classes, music competitions, exchange programs, festivals and conferences.

**LOCATION** Platz der Demokratie 2/3  
99423 Weimar  
GERMANY  
[www.hfm-weimar.de](http://www.hfm-weimar.de)

**ADMISSIONS** +49 3643 555 184  
[studium@hfm-weimar.de](mailto:studium@hfm-weimar.de)

**Audition Requirements** [Audition Requirements](#)

### FINANCIAL INFORMATION

[Tuition & Fees](#) / [Financial Aid & Scholarships](#)

### CAREER / POST-GRADUATION ASSISTANCE

[Career Assistance](#)

### KEY STATISTICS (college level and above)

**850** music students

**Music Faculty:** **110** full time, **90** adjunct

### AREAS OF STUDY

Brass • Composition (Performance) • Conducting  
• Early Music • Guitar • Jazz Studies & Contemporary  
Media • Music Education • Musicology • Organ  
• Piano • Strings • Vocal Arts/Opera • Winds &  
Percussion • Accordion

### DEGREE PROGRAMS

[Undergraduate Programs](#) / [Graduate Programs](#)

### PANDEMIC & SAFETY: SCHOOL POLICIES

Proof of vaccination required? (✓=Yes ✗=No)

✗ Students ✗ Faculty ✗ Staff

### SOCIAL LINKS



## UNIVERSITY OF MUSIC AND PERFORMING ARTS GRAZ (KUNSTUNIVERSITÄT GRAZ) (KUG)

### WHAT MAKES THIS SCHOOL UNIQUE?

The University of Music and Performing Arts Graz offers a wide range of courses in music and the performing arts. We build on a rich cultural heritage and explore current progress in the contemporary arts. The question of the significance of arts in society is an important aspect for us.

**LOCATION** Leonhardstraße 15  
8010 Graz  
AUSTRIA  
[www.kug.ac.at](http://www.kug.ac.at)

**ADMISSIONS** +43 316 389 1234  
[welcome@kug.ac.at](mailto:welcome@kug.ac.at)

**Audition Requirements** [Audition Requirements](#)

### FINANCIAL INFORMATION

[Tuition & Fees](#) / [Financial Aid & Scholarships](#)

### CAREER / POST-GRADUATION ASSISTANCE

[Career Assistance](#)

### KEY STATISTICS (college level and above)

**2300** music students

**Music Faculty:** **177** full time, **346** adjunct

### AREAS OF STUDY

Brass • Collaborative Piano • Composition  
(Performance) • Conducting • Early Music • Guitar  
• Jazz Studies & Contemporary Media • Media  
studies (including audio and video production)  
• Music Education • Musicology • Music Therapy  
• Organ • Piano • Strings • Vocal Arts/Opera  
• Winds & Percussion • Catholic and Protestant  
Church Music • Computer Music and Sound Art  
• Education in Composition and Music Theory  
• Electrical Engineering and Audio Engineering  
• Performing Arts (Drama) • Performance Practice  
in Contemporary Music (PPCM) • Communication,  
Media, Sound and Interaction Design - Sound  
Design • Stage Design • Teacher Education Program

### DEGREE PROGRAMS

[Undergraduate Programs](#) / [Graduate Programs](#)

*Additional details:* Doctoral Programs; Master in  
Mediation of Music and Theatre

### ADDITIONAL PROGRAMS (non-matriculating/prep)

[Courses for Children and Adolescents](#)

[Courses for Further Education](#)

[Attending Individual Courses Without Seeking a Degree](#)

### PANDEMIC & SAFETY: SCHOOL POLICIES

[Policies & Procedures for this school](#)

Proof of vaccination required? (✓=Yes ✗=No)

✗ Students ✗ Faculty ✗ Staff

### SOCIAL LINKS





# UNIVERSITY OF NORTH CAROLINA SCHOOL OF THE ARTS SCHOOL OF MUSIC

## WHAT MAKES THIS SCHOOL UNIQUE?

UNCSA School of Music offers a transformative conservatory experience that prepares students for professional careers. The program combines intensive individual study under professional artist-mentors with a variety of performance opportunities including collaborations with other UNCSA arts schools. Students attend master classes with distinguished guest artists and perform in state-of-the-art facilities.

**LOCATION** 1533 South Main Street  
Winston-Salem, NC 27127  
UNITED STATES  
[www.uncsa.edu](http://www.uncsa.edu)

**ADMISSIONS** 336-770-3290  
[admissions@uncsa.edu](mailto:admissions@uncsa.edu)

## Audition Requirements

In addition to the online application, students will need to audition for the music faculty in their area of interest.

[Undergraduate](#)

[Graduate](#)

[High School](#)

## FINANCIAL INFORMATION

[Tuition & Fees](#) / [Financial Aid & Scholarships](#)

## UNIVERSITY OF NORTH CAROLINA SCHOOL OF THE ARTS

### CAREER / POST-GRADUATION ASSISTANCE

The UNCSA [Office of Career Development](#) helps prepare students for a successful transition from school to professional careers. Students also may participate in career development seminars and apply for career development grants and fellowships.

### KEY STATISTICS (college level and above)

173 music students

**Music Faculty:** 25 full time, 23 adjunct

138 scholarships awarded

*Scholarship details:* \$10,865.35

### AREAS OF STUDY

Brass • Collaborative Piano • Composition (Performance) • Conducting • Guitar • Organ • Piano • Strings • Vocal Arts/Opera • Winds & Percussion

### DEGREE PROGRAMS

[Undergraduate Programs](#) / [Graduate Programs](#)

*Additional details:* Note: The above areas of study are concentrations geared toward performance. There are courses in jazz, theory, etc., but they are not concentrations. UNCSA has an arts entrepreneurship minor. The School of Filmmaking has a film-music-composition concentration.

### ADDITIONAL PROGRAMS (non-matriculating prep)

[A.J. Fletcher Opera Institute](#)

### PANDEMIC & SAFETY: SCHOOL POLICIES

Proof of vaccination required? (✓=Yes ✗=No)

✗ Students ✗ Faculty ✗ Staff

### SOCIAL LINKS



UNIVERSITY OF NORTH CAROLINA  
SCHOOL OF THE ARTS

UNCSA.EDU

NURTURE YOUR TALENT

WORLD-CLASS FACULTY. AFFORDABLE TUITION. STATE-OF-THE-ART FACILITIES.

DANCE DESIGN & PRODUCTION DRAMA FILMMAKING **MUSIC**  
GRADUATE UNDERGRADUATE HIGH SCHOOL SUMMER INTENSIVES



Tianjin Juilliard  
天津茱莉亚学院

## Transforming Passion into Artistry

Master of Music Degree from Juilliard

World-renowned faculty and guest artists  
Robust scholarship and development  
Unparalleled performance opportunities

Application opens September 1

Photos by shengyi visual

tianjinjuilliard.edu.cn

Contact Admissions

## UNIVERSITY OF OREGON, SCHOOL OF MUSIC AND DANCE

### WHAT MAKES THIS SCHOOL UNIQUE?

Set against the backdrop of Oregon's beautiful Willamette Valley, the University of Oregon School of Music and Dance offers traditional and unique degrees and maintains a supportive environment for all performers and academics to feel safe, explore, and flourish together.

**LOCATION** 961 East 18th Avenue  
Eugene, OR 97403  
UNITED STATES  
[musicanddance.uoregon.edu](http://musicanddance.uoregon.edu)

**ADMISSIONS** 541-346-5268  
[somdadmit@uoregon.edu](mailto:somdadmit@uoregon.edu)

**Audition Requirements**  
[Undergraduate Audition Requirements](#)  
[Graduate Audition Requirements](#)

**FINANCIAL INFORMATION**  
[Tuition & Fees](#) / [Financial Aid & Scholarships](#)

### CAREER / POST-GRADUATION ASSISTANCE

[Career advising, networking fair, career workshops, master classes](#)

**KEY STATISTICS** (college level and above)  
550 music students  
**Music Faculty:** 56 full time, 15 adjunct

### AREAS OF STUDY

Brass • Collaborative Piano • Composition (Performance) • Conducting • Early Music • Jazz Studies & Contemporary Media • Media studies (including audio and video production) • Music Education • Musicology • Organ • Piano • Strings • Vocal Arts/Opera • Winds & Percussion

### PANDEMIC & SAFETY: SCHOOL POLICIES

[Policies & Procedures for this school](#)  
Proof of vaccination required? (✓=Yes ✗=No)  
✗ Students ✗ Faculty ✗ Staff

**SOCIAL LINKS**    



# USC THORNTON SCHOOL OF MUSIC

University of Southern California

As the music profession changes, the USC Thornton School of Music offers an innovative education that prepares students for careers at the highest level as performers, composers, educators, and industry leaders. We do this while making the most of our location in Los Angeles, the nation's center for creativity and original art of all kinds.

Our three exceptional divisions offer cross-genre experiences unique among the country's top music schools. As a leading international research institution, USC offers students a rigorous, global education that enriches their artistic and musical development.

**LOCATION** 3450 Watt Way, TMC 200  
Los Angeles, CA 90089-1441  
UNITED STATES  
[music.usc.edu](http://music.usc.edu)

**ADMISSIONS** 213-740-8986  
[uscmusic@usc.edu](mailto:uscmusic@usc.edu)

**Audition Requirements** [Audition Requirements](#)

**FINANCIAL INFORMATION**  
[Tuition & Fees](#) / [Financial Aid & Scholarships](#)

## USC Thornton

School of Music

### CAREER / POST-GRADUATION ASSISTANCE

Various career-related courses and one-on-one mentorship with faculty are a central aspect of the USC Thornton experience. The [USC Career Center](#) offers career services to current students and recent alums. USC Thornton alumni enjoy tremendous success in a wide array of music professions.

### KEY STATISTICS (college level and above)

**1000** music students  
**Music Faculty:** 90 full time, 85 adjunct

### AREAS OF STUDY

Arts Leadership • Brass • Collaborative Piano  
• Composition (Performance) • Early Music • Guitar  
• Jazz Studies & Contemporary Media • Music Business • Music Education • Musicology • Organ  
• Piano • Strings • Vocal Arts/Opera • Winds & Percussion • Choral & Sacred Music • Community Music • Music Industry • Music Production • Popular Music Performance • Popular Music Teaching and Learning • Screen Scoring

### DEGREE PROGRAMS

[Undergraduate Programs](#) / [Graduate Programs](#)

### PANDEMIC & SAFETY: SCHOOL POLICIES

[Policies & Procedures for this school](#)

Proof of vaccination required? (✓=Yes ✗=No)

✗ Students ✗ Faculty ✗ Staff

### SOCIAL LINKS



USC Thornton

MUSIC.USC.EDU



@USCTHORNTON



## UNIVERSITY OF WISCONSIN-MADISON MEAD WITTER SCHOOL OF MUSIC

### WHAT MAKES THIS SCHOOL UNIQUE?

The University of Wisconsin-Madison is world-renowned as one of the top 10 public universities in the country, and the intimate School of Music is ranked in the top 10% of comprehensive music programs.

**LOCATION** 3561 Mosse Humanities Building  
455 North Park Street  
Madison, WI 53706  
UNITED STATES  
[www.music.wisc.edu](http://www.music.wisc.edu)

**ADMISSIONS** 608-263-1900  
[admissions@music.wisc.edu](mailto:admissions@music.wisc.edu)

### FINANCIAL INFORMATION

[Tuition & Fees](#) / [Financial Aid & Scholarships](#)

### CAREER / POST-GRADUATION ASSISTANCE

The College of Letters & Science is committed to preparing undergraduates for satisfying and rewarding careers. Wisconsin's advantage for implementing this career development effort is the alignment among students, faculty, staff, administrators, alumni, and employers. The initiative will become the leading platform across the nation for undergraduate personal and career development among public research institutions.

### KEY STATISTICS (college level and above)

**335** music students  
**Music Faculty: 40** full time, **10** adjunct

### AREAS OF STUDY

Brass • Collaborative Piano • Composition (Performance) • Conducting • Guitar • Jazz Studies & Contemporary Media • Music Education • Musicology • Piano • Strings • Vocal Arts/Opera • Winds & Percussion

### DEGREE PROGRAMS

Bachelor of Music, Bachelor of Arts, and Bachelor of Science degrees  
Master of Music, Master of Arts, Doctor of Musical Arts, and Doctor of Philosophy degrees

### PANDEMIC & SAFETY: SCHOOL POLICIES

Proof of vaccination required? (✓=Yes ✗=No)  
✗ Students ✗ Faculty ✗ Staff

### SOCIAL LINKS



## VIRGINIA SYMPHONY ORCHESTRA

Old Dominion University

### WHAT MAKES THIS SCHOOL UNIQUE?

This African American Fellowship Program is a collaboration with the Virginia Symphony Orchestra and Old Dominion University. Fellows perform with a professional orchestra, receive lessons with VSO professional musicians, create and perform educational chamber music shows, and coach students in the public schools.

**LOCATION** 150 Boush Street, Suite 201  
Norfolk, VA 23510  
UNITED STATES  
[virginiasymphony.org](http://virginiasymphony.org)

**ADMISSIONS** 757-213-1438  
[fellowship@virginiasymphony.org](mailto:fellowship@virginiasymphony.org)

### Audition Requirements [Audition Requirements](#)

*Application deadline:* February 6, 2024; Audition: March 4, 2024

### FINANCIAL INFORMATION

[Tuition & Fees](#)

### AREAS OF STUDY

Strings  
*Additional details:* Graduate Certificate in Music Performance for violin, viola, cello and double bass

### PANDEMIC & SAFETY: SCHOOL POLICIES

Proof of vaccination required? (✓=Yes ✗=No)  
✗ Students ✗ Faculty ✗ Staff

**BUILD YOURSELF AT FROST**  
WHERE EDUCATION MEETS WORLD CLASS ARTISTRY

By combining tradition with innovation, students at the Frost School of Music build themselves into musicians with the artistic, technological, and entrepreneurial skills to thrive in the rapidly changing world of professional music through the unique Frost Method © curriculum.

SCHOLARSHIPS, GRADUATE ASSISTANTSHIPS, AND FINANCIAL AID ARE AVAILABLE

**APPLY BY DECEMBER 1ST, 2023**

FROST | SCHOOL OF MUSIC  
UNIVERSITY OF MIAMI

[frost.miami.edu](http://frost.miami.edu)

Follow Us @FrostSchoolUM  
f o t w i n

# M | MUSIC, THEATRE & DANCE

ADVANCE YOUR TECHNIQUE.  
CUSTOMIZE YOUR EDUCATION.  
DISCOVER YOUR TRUE POTENTIAL.



[smtd.umich.edu/victors-2028](https://smtd.umich.edu/victors-2028)



umichsmtd

## WESTMINSTER CHOIR COLLEGE

Rider University

### WHAT MAKES THIS SCHOOL UNIQUE?

Our conservatory-style school provides a music-focused education led by world-class faculty. You'll learn in a supportive, diverse, community-focused and non-competitive environment. We also encourage cross-disciplinary learning to build collaborative experiences and help you become a well-rounded music leader.

**LOCATION** 2083 Lawrenceville Road  
Lawrenceville, NJ 08683  
UNITED STATES  
[www.rider.edu](http://www.rider.edu)

**ADMISSIONS** 609-896-5042  
[admissions@rider.edu](mailto:admissions@rider.edu)

**Audition Requirements**  
[Undergraduate audition requirements](#)  
[Graduate audition requirements](#)

**FINANCIAL INFORMATION**  
[Tuition & Fees](#) / [Financial Aid & Scholarships](#)

### CAREER / POST-GRADUATION ASSISTANCE

All students have access to the resources and assistance offered through the office of [Career Development and Success](#) at Rider University. Students are also encouraged by their teachers and advisors to explore various performing opportunities available right on campus, and take advantage of Rider's close proximity to New York and Philadelphia where thousands of opportunities await to make lasting connections and build your résumé.

**KEY STATISTICS** (college level and above)  
170 music students  
**Music Faculty:** 20 full time, 27 adjunct

**AREAS OF STUDY**  
Conducting • Music Education • Vocal Arts/Opera Choral • Choral Pedagogy • Sacred Music • Voice Pedagogy

**DEGREE PROGRAMS**  
[Undergraduate Programs](#) / [Graduate Programs](#)

**ONLINE COURSES**  
[Online courses information](#)  
Up to 25% will be available as hybrid or online-only courses

**PANDEMIC & SAFETY: SCHOOL POLICIES**  
Proof of vaccination required? (✓=Yes ✗=No)  
✗ Students ✗ Faculty ✗ Staff

**SOCIAL LINKS**     



## YALE SCHOOL OF MUSIC

### Yale University

#### WHAT MAKES THIS SCHOOL UNIQUE?

YSM maintains a highly selective admission process, each year admitting approximately 100 students who come from prestigious American and international conservatories and universities to study with Yale's distinguished faculty. A full tuition award and living stipend is given to all students who are admitted to the School.

**LOCATION** 98 Wall Street  
PO Box 208246  
New Haven, CT 06520-8246  
UNITED STATES  
[music.yale.edu](https://music.yale.edu)

**ADMISSIONS** 203-432-4155  
[gradmusic.admissions@yale.edu](mailto:gradmusic.admissions@yale.edu)

**Audition Requirements** [Audition Requirements](#)

**FINANCIAL INFORMATION**  
[Tuition & Fees](#) / [Financial Aid & Scholarships](#)

#### CAREER / POST-GRADUATION ASSISTANCE

[Career Assistance](#)

#### KEY STATISTICS (college level and above)

**200** music students  
**Music Faculty:** 40 full time, 30 adjunct  
*Scholarship details:* \$40,000

#### AREAS OF STUDY

Brass • Collaborative Piano • Composition (Performance) • Conducting • Guitar • Organ • Piano • Strings • Vocal Arts/Opera • Winds & Percussion

#### DEGREE PROGRAMS

[Undergraduate Programs](#) / [Graduate Programs](#)  
*Additional details:* Master of Music; Master of Musical Arts; Doctor of Musical Arts; Artist Diploma; Certificate in Performance; BA/MM; String Quartet Fellowship; Collaborative Piano Fellowship

#### ADDITIONAL PROGRAMS (non-matriculating/prep)

[Norfolk Chamber Music Festival / Yale Summer School of Music](#)  
[Morris Steinert Collection of Musical Instruments](#)

#### PANDEMIC & SAFETY: SCHOOL POLICIES

[Policies & Procedures for this school](#)  
Proof of vaccination required? (✓=Yes ✗=No)  
✓ Students ✓ Faculty ✓ Staff

**SOCIAL LINKS**    



## The 2023-24 Guide to Music Schools

In addition to the Music Schools featured in this special report, the [Musical America database](#) of more than 1200 music schools worldwide is free of charge for the month of September 2023.

### [A Guide to Music Schools](#)

View the 2023–24 Guide online along with information about additional schools.

## In The Next Issue...

# 2024 Guide to Summer Camps, Programs & Institutes

*Coming 8 November 2023*

Questions? Email [info@musicalamerica.com](mailto:info@musicalamerica.com)

## Advertiser Index

Boston Conservatory at Berklee .....	7
The Colburn School .....	12
Crane School of Music, SUNY Potsdam .....	25
Eastman School of Music of the University of Rochester .....	17
Frost School of Music .....	50
Indiana University Jacobs School of Music .....	23
The Juilliard School .....	24
Manhattan School of Music .....	27
Mercer University School of Music .....	13
National Federation of Music Clubs .....	20
Northeastern University Department of Music .....	44
Northwestern University Bienen School of Music .....	5
Oberlin Conservatory of Music .....	40
Pacific Region International Summer Music Association (PRISMA) Festival & Academy .....	33
The Peabody Conservatory of the Johns Hopkins University .....	32
Royal College of Music (RCM) .....	34
Royal Conservatoire of Scotland .....	10
The Shepherd School of Music at Rice University .....	13
The Tianjin Juilliard School .....	48
Trinity Laban Conservatoire of Music and Dance .....	39
University of Cincinnati College–Conservatory of Music (CCM) .....	41
The University of Michigan School of Music, Theatre & Dance .....	51
University of North Carolina School of the Arts .....	47
USC Thornton School of Music .....	49
Virginia Symphony Orchestra African American Fellowship Program .....	25

**Stephanie Challenger**  
*Publisher and Managing Editor*

**Susan Elliott**  
*Editor, News and Special Reports*  
[editor@musicalamerica.com](mailto:editor@musicalamerica.com)

**Frances Wan**  
*Design Director | Database Publishing Specialist*

**Howard Roth**  
*Business Consultant*

**Clive Paget**  
*Features Editor, Musical America Directory*

*Listing Services*  
[listings@musicalamerica.com](mailto:listings@musicalamerica.com)

**Tony Maiorino**  
*Advertising Sales Representative*  
609-651-0874 ■ [info@musicalamerica.com](mailto:info@musicalamerica.com)

**Carolyn Eychenne** (Europe)  
*Advertising Sales Representative*  
33.1.39.58.14.01 ■ [carolyn@eychenne.me](mailto:carolyn@eychenne.me)

**Andrea Rancati** (Italy)  
*Advertising Sales Representative*  
39.02.703.00088 ■ [arancati@rancatinet.it](mailto:arancati@rancatinet.it)

**PUBLISHED BY**

**Performing Arts  
Resources, LLC**  
Your source for news and information

**PERFORMING ARTS RESOURCES, LLC**  
14846 Gates Avenue, Magnolia Springs, AL 36555  
609-651-0874 ■ [info@musicalamerica.com](mailto:info@musicalamerica.com)