

musical  
america  
September  
2022  
SPECIAL REPORTS

The 2022-23 Guide to  
**MUSIC SCHOOLS**

SPECIAL FOR  
**MTNA**  
MUSIC TEACHERS NATIONAL ASSOCIATION



# MUSIC SCHOOLS

For those schools in the listings, you'll find detailed information on degrees offered, available areas of study, numbers of students and teachers, career and post-graduate assistance, and links to social media and financial information. We also asked each institution to describe its most "distinguishing characteristics." We relied on the schools to tell their own stories.

Academy of Vocal Arts.....	2	Mannes School of Music.....	26
Adelphi University.....	3	Robert McDuffie Center for Strings.....	26
Arizona State University School of Music, Dance and Theatre .....	4	New England Conservatory .....	27
Bard College Conservatory of Music .....	4	New World Symphony, America's Orchestral Academy .....	28
Bienen School of Music .....	5	Northeastern University Department of Music, College of Arts, Media & Design .....	28
Biola University Conservatory of Music.....	6	Oberlin Conservatory of Music.....	29
Blair School of Music .....	6	The Ohio State University School of Music .....	30
Boston Conservatory at Berklee .....	7	Pacific Region International Summer Music Association Festival & Academy.....	30
The Buchmann-Mehta School of Music .....	8	Peabody Conservatory.....	31
Sarah and Ernest Butler School of Music .....	9	Peck School of the Arts.....	32
Carnegie Mellon University School of Music .....	9	Royal College of Music.....	33
Cleveland Institute of Music .....	10	San Francisco Conservatory of Music .....	33
Colburn Conservatory of Music .....	11	Shenandoah Conservatory .....	34
Columbia University, Teachers College.....	12	The Shepherd School of Music.....	35
Coservatorio di Musica "Arrigo Boito".....	12	The Tianjin Juilliard School .....	35
The Crane School of Music.....	14	Trinity Laban Conservatoire of Music and Dance.....	36
Curtis Institute of Music .....	14	UC Berkeley Department of Music.....	37
DePaul University School of Music.....	15	UCLA Herb Alpert School of Music .....	37
East Carolina University School of Music.....	16	University of Cincinnati College-Conservatory of Music (CCM).....	38
Eastman School of Music.....	16	University of Florida School of Music.....	39
Hanns Eisler School of Music Berlin .....	17	University of Illinois School of Music .....	39
Florida State University College of Music.....	18	University of Massachusetts Amherst Department of Music & Dance .....	40
The Fredonia School of Music .....	19	University of Massachusetts Lowell Department of Music.....	41
Frost School of Music.....	20	University of Michigan School of Music, Theatre & Dance.....	41
Hugh A. Glauser School of Music .....	20	University of North Carolina School of the Arts School of Music.....	42
The Glenn Gould School at the Royal Conservatory of Music .....	21	USC Thornton School of Music .....	43
Hall-Musco Conservatory of Music .....	22	University of Utah School of Music .....	44
Halsey Institute of Music and Entertainment Business.....	22	Westminster College of the Arts .....	44
The Hartt School .....	23	Yale School of Music .....	45
IU Jacobs School of Music.....	23		
The Juilliard School .....	24		
Longy School of Music.....	25		
Manhattan School of Music.....	25		

## Editor's Note



In preparing our annual *Guide to Music Schools*, we send out questionnaires to our deeply vetted list of institutions several months in advance of publication—as early as June. Some of our respondents get back to us immediately; others wait as they finalize their program details.

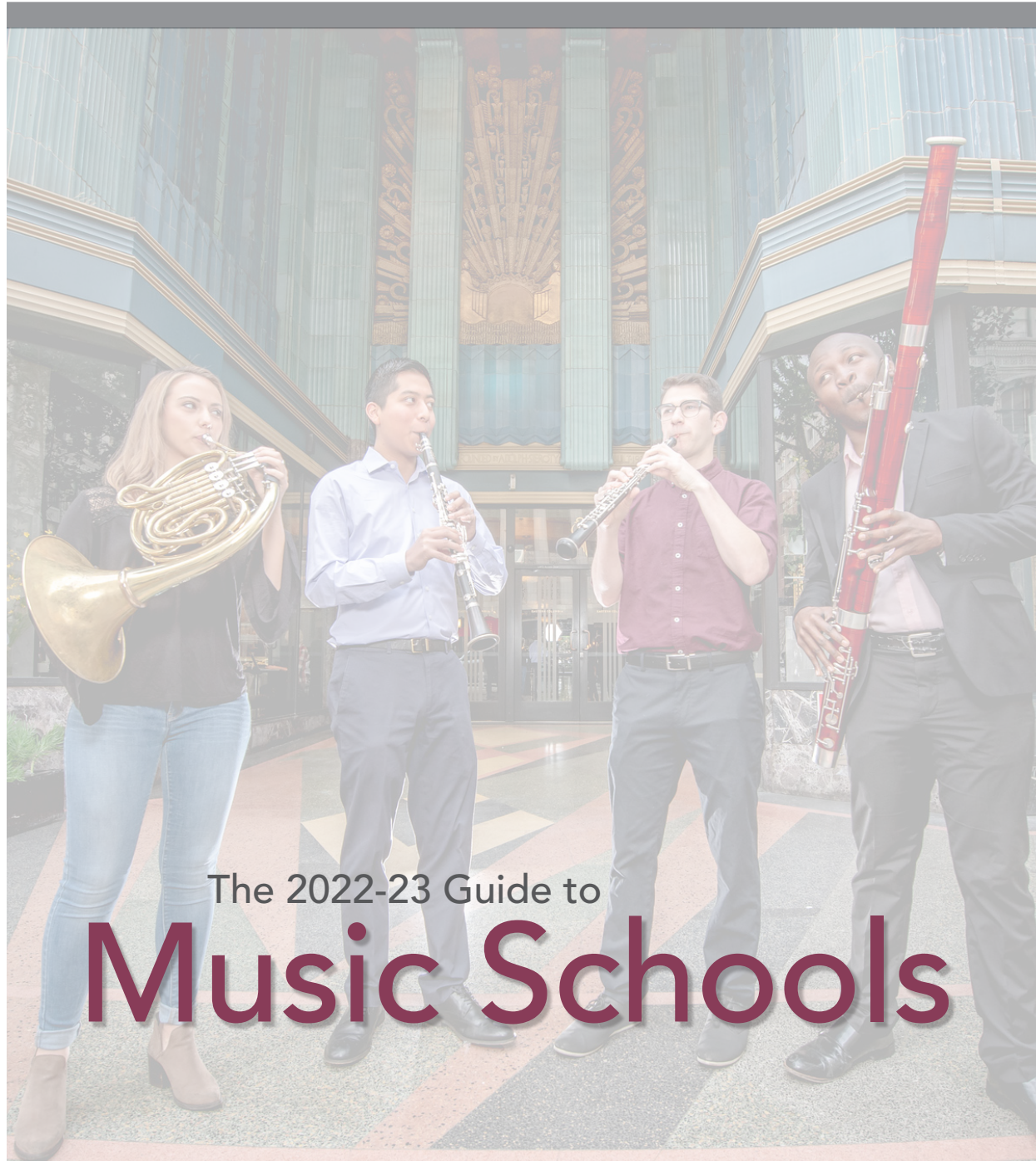
The reason we go through this exercise each year is that, even in the days before the pandemic, change is a constant—in life, of course, but particularly in the performing arts and even more particularly, in music. And, if a school wants to keep its enrollment robust, it has to keep up with the times. Northeastern University, for example, offers Bachelor of Science degrees in, among others, Electrical Engineering and Music with Concentration in Music Technology, and Game Design and Music with Concentration in Music Technology.

From year to year, courses and tracks are added or dropped; career services expanded; tuition increased (usually) or dropped altogether for at least three (it used to be just one) conservatories that are fully funded; collaborations with other institutions or departments are offered for double degrees; audition requirements, teacher-to-student ratios—they all change annually.

And, thanks to those little asterisks that indicate "response required," you can't just breeze by all those tiny check boxes for "degrees offered in," "numbers of faculty," and "proof of vaccination required for students, faculty, or staff." My particular favorite is the final one, "Please confirm you are updating your information for the 2022-23 Music Schools Guide." If respondents don't answer even one of those questions, they get an error message indicating that the questionnaire cannot be submitted. Annoying? You bet. That's how we ensure that we are providing readers with the most accurate, up-to-date information. It's our trademark, after all.

Regards,  
Susan Elliott  
Editor, *News and Special Reports*

COVER PHOTO: USC Thornton School of Music students Anna Gilpatrick, Javier Morales-Martinez, Bennett James Lopez, and Jaquain Sloan in front of the Eastern building near the arts district of downtown Los Angeles, CA, in 2019.  
CREDIT: Ben Gibbs



## ACADEMY OF VOCAL ARTS

### WHAT DISTINGUISHES THIS SCHOOL?

The Academy of the Vocal Arts is the only nationally accredited conservatory in the United States exclusively devoted to the training of young opera singers tuition-free. Artists from throughout the states and all over the world audition to study and perform in AVA's four-year program.

**LOCATION** 1920 Spruce Street  
Philadelphia, PA 19103  
UNITED STATES  
[www.avaopera.org/](http://www.avaopera.org/)

**ADMISSIONS** 215-735-1685  
[info@avaopera.org](mailto:info@avaopera.org)

**Audition Requirements** [Audition Requirements](#)

### FINANCIAL INFORMATION

[Tuition & Fees](#) / [Financial Aid & Scholarships](#)

### CAREER / POST-GRADUATION ASSISTANCE

At this time, no degrees are granted, but Artist Diplomas are awarded to those whom the AVA believes are ready for operatic and concert careers and have completed the minimum required classes. AVA is an accredited, non-degree-granting member of the National Association of Schools of Music. Course work completed at AVA does not accrue credit hours and is not transferable to other institutions.

### KEY STATISTICS (college level and above)

**25** music students

**Music Faculty:** **20** full time, **3** adjunct

*Scholarship details:* \$100,000 per Resident Artist

### AREAS OF STUDY

Vocal Arts/Opera

### DEGREE PROGRAMS

No degrees offered. Resident Artists graduate with Artist Diploma

### PANDEMIC & SAFETY: SCHOOL POLICIES

[Policies & Procedures for this school](#)

Proof of vaccination required? (✓=Yes ✗=No)

✓ Students ✓ Faculty ✓ Staff

### SOCIAL LINKS



The 2022-23 Guide to  
**Music Schools**



## ADELPHI UNIVERSITY

### WHAT DISTINGUISHES THIS SCHOOL?

Adelphi is known for its top-ranked academic programs, small classes and personalized attention. Our students call their Adelphi experience transformative and call their community family—exactly what your college studies at all levels should be about.

**LOCATION** One South Avenue  
Garden City, NY 11530  
UNITED STATES  
[www.adelphi.edu](http://www.adelphi.edu)

**ADMISSIONS** 516-877-3050  
[admissions@adelphi.edu](mailto:admissions@adelphi.edu)

**Audition Requirements** [Audition Requirements](#)  
*Presentation of Performance and Compositions*—Singers and instrumentalists will be asked to perform two contrasting prepared works before a live panel of music faculty. An email of proposed audition repertoire choices must be sent a minimum of two weeks prior to your scheduled audition.

*Composers*—Applicants to the Composition Concentration will be asked to present and discuss a small portfolio of printed or manuscript scores of their works (preferably with a recording of at least one of those works).

*Music Tests*—Three brief tests are used to help faculty understand students' skill levels in key areas of musicianship and to appropriately place students within the sequence of theory and musicianship courses. The three music tests cover sight reading, pitch and interval recognition, and theory—the ability to discern rhythm, harmony and melody from a recorded or performed musical excerpt.

*Interview*—A brief interview gives faculty the chance to learn more about your background, current work, and career plans.

### FINANCIAL INFORMATION

[Tuition & Fees](#) / [Financial Aid & Scholarships](#)

**CAREER / POST-GRADUATION ASSISTANCE**  
[Career Assistance](#)

**KEY STATISTICS** (college level and above)  
**65** music students  
**Music Faculty:** **6** full time, **50** adjunct  
*Scholarship details:* \$15,000 to \$34,000 awarded to entering full-time first-year students with exceptional academic achievement and demonstrated talent

### AREAS OF STUDY

Brass • Composition (Performance) • Guitar • Jazz Studies & Contemporary Media • Music Business • Music Education • Music Therapy • Piano • Strings • Vocal Arts/Opera • Winds & Percussion • Instrumental Performance

### DEGREE PROGRAMS

[BS in Music](#); [BS in Music Education](#); [Minor in Digital Recording Arts and Music Technology](#)  
*Additional details:* Music Minor in Digital Recording and Music Technology

### ONLINE COURSES

[Online courses information](#)  
Up to 25% will be available as hybrid or online-only courses

### PANDEMIC & SAFETY: SCHOOL POLICIES

[Policies & Procedures for this school](#)  
Proof of vaccination required? (✓=Yes ✗=No)  
✓ Students ✓ Faculty ✓ Staff

### SOCIAL LINKS



# NATIONAL FEDERATION of MUSIC CLUBS

*Offers over \$750,000 in awards annually.*

\$20,000 Young Artist in piano, strings, man's voice and woman's voice  
\$20,000 Ellis Duo Piano Award  
\$5,000 Lynn Freeman Olson Piano Pedagogy Award  
\$3,000 Student/Collegiate Auditions in Man's Voice, Woman's Voice, Orchestral Brass, Orchestral Woodwinds, Organ, Piano, Percussion, Violin, Viola, Violincello, Double Bass  
\$2,000 Classic Guitar Award  
\$1,500 Music Therapy Awards  
\$1,500 Van Roy Music Education Award  
\$1,500 Lynn Freeman Olson Composition Award



For more details, please check out our website  
[www.nfmc-music.org/competitions-awards](http://www.nfmc-music.org/competitions-awards)



## ARIZONA STATE UNIVERSITY SCHOOL OF MUSIC, DANCE AND THEATRE

### WHAT DISTINGUISHES THIS SCHOOL?

Located in the culturally rich Southwest desert in one of the country's most vibrant, expanding urban centers, the ASU School of Music, Dance and Theatre affords its students not only access to this diverse environment but also engagement in Phoenix's diverse, flourishing arts community.

**LOCATION** 50 East Gammage Parkway  
Tempe, AZ, 85287-0405  
UNITED STATES  
[music.asu.edu](http://music.asu.edu)  
[musicdancetheatre.asu.edu](http://musicdancetheatre.asu.edu)

**ADMISSIONS** 480-965-5069  
[mdtadmissions@asu.edu](mailto:mdtadmissions@asu.edu)

**Audition Requirements** [Audition Requirements](#)

**FINANCIAL INFORMATION**  
[Tuition & Fees](#) / [Financial Aid & Scholarships](#)

**CAREER / POST-GRADUATION ASSISTANCE**  
[Career Assistance](#)

**KEY STATISTICS** (college level and above)

750 music students

**Music Faculty:** 74 full time, 60 adjunct

### AREAS OF STUDY

Arts Leadership • Brass • Collaborative Piano  
• Composition (Performance) • Conducting • Early Music • Guitar • Jazz Studies & Contemporary Media • Media studies (including audio and video production) • Music Business • Music Education • Musicology • Music Therapy • Organ • Piano • Strings • Vocal Arts/Opera • Winds & Percussion • Music Theatre • Pedagogy • Interdisciplinary Digital Media

### DEGREE PROGRAMS

[Undergraduate Programs](#) / [Graduate Programs](#)  
*Additional details:* Arts Leadership concentration is through Herberger Institute for Design and the Arts

### ONLINE COURSES

[Online courses information](#)  
Up to 25% will be available as hybrid or online-only courses

### PANDEMIC & SAFETY: SCHOOL POLICIES

[Policies & Procedures for this school](#)  
Proof of vaccination required? (✓=Yes ✗=No)  
✗ Students ✗ Faculty ✗ Staff

**SOCIAL LINKS** 

## BARD COLLEGE CONSERVATORY OF MUSIC

### Bard College

### WHAT DISTINGUISHES THIS SCHOOL?

All Conservatory undergraduates pursue a five-year program leading to two degrees: the Bachelor of Music degree and the Bachelor of Arts degree in a field other than music. Bard Conservatory offers degrees in instrumental and vocal performance, composition, and traditional Chinese instruments.

**LOCATION** 30 Campus Road  
Annandale-on-Hudson, NY 12504  
UNITED STATES  
[www.bard.edu/conservatory](http://www.bard.edu/conservatory)

**ADMISSIONS** 845-752-2409  
[conservatoryadmission@bard.edu](mailto:conservatoryadmission@bard.edu)

**Audition Requirements**  
[Undergraduate Double Degree](#)  
[Graduate Vocal Arts Program](#)  
[Graduate Instrumental Arts Program](#)  
[Graduate Conducting Program](#)

**FINANCIAL INFORMATION**  
[Tuition & Fees](#) / [Financial Aid & Scholarships](#)

### CAREER / POST-GRADUATION ASSISTANCE

Graduates from Bard are well-equipped for whichever path they choose to follow after graduating. We have students who have gone on to play with major orchestras in the U.S., Europe, and Asia, and we have students who have gone on to found their own festivals and ensembles. [Read more about our alumni/ae.](#)

### KEY STATISTICS (college level and above)

170 music students

**Music Faculty:** 13 full time, 80 adjunct

### AREAS OF STUDY

Brass • Collaborative Piano • Composition (Performance) • Conducting • Music Therapy • Organ • Piano • Strings • Vocal Arts/Opera

### DEGREE PROGRAMS

[Undergraduate Programs](#); [Graduate Vocal Arts \(MM\)](#); [Graduate Instrumental Arts \(MM\)](#); [Graduate Conducting \(MM\)](#); [Advanced Performance Studies Program \(graduate certificate\)](#); [Post-Graduate Collaborative Piano Fellowship](#)

*Additional details:* Bachelor of Music degrees in performance through a double-degree program; instruments offered are: Pipa; Erhu; Guzheng; Ruan; Dizi; Sheng; Guqin; Chinese Percussion

**ADDITIONAL PROGRAMS** (non-matriculating/prep)  
[The Music Program](#)

### PANDEMIC & SAFETY: SCHOOL POLICIES

[Policies & Procedures for this school](#)  
Proof of vaccination required? (✓=Yes ✗=No)  
✓ Students ✓ Faculty ✓ Staff

**SOCIAL LINKS**    



# BIENEN SCHOOL OF MUSIC

Northwestern University

Northwestern University is committed to excellent teaching, innovative research, and the personal and intellectual growth of its students in a diverse academic community.

## WHAT DISTINGUISHES THIS SCHOOL?

With its proximity to the cultural hub of Chicago, conservatory-level musical training, and engaging academic environment, Northwestern's Bienen School of Music provides students an educational atmosphere unlike any other. Undergraduates may pursue dual degrees, double majors, or an ad-hoc (self-designed) major.

**LOCATION** Northwestern University,  
Bienen School of Music  
Ryan Center for the Musical Arts  
70 Arts Circle Drive  
Evanston, IL 60208  
UNITED STATES  
[www.music.northwestern.edu](http://www.music.northwestern.edu)

**ADMISSIONS** 847-491-3141  
[musiclife@northwestern.edu](mailto:musiclife@northwestern.edu)

**Audition Requirements** [Audition Requirements](#)

## FINANCIAL INFORMATION

[Tuition & Fees](#) / [Financial Aid & Scholarships](#)

## Northwestern BIENEN SCHOOL OF MUSIC

### CAREER / POST-GRADUATION ASSISTANCE

The Bienen School of Music offers many courses related to crafting and building a successful career in music, and our internationally renowned faculty are an invaluable resource in guiding and preparing students for work post-graduation. Northwestern's [Career Advancement Office](#) provides a wide array of career planning services including assistance with cover letter and résumé writing, internship applications, and interview skills, as well as more specialized offerings such as panels and opportunities to network with Chicago arts professionals.

### KEY STATISTICS (college level and above)

**650** music students

**Music Faculty:** **54** full time, **71** adjunct

### AREAS OF STUDY

Brass • Composition (Performance) • Conducting  
• Guitar • Jazz Studies & Contemporary Media  
• Music Education • Musicology • Piano • Strings  
• Vocal Arts/Opera • Winds & Percussion • Music  
Cognition • Music Theory

### DEGREE PROGRAMS

[Undergraduate Programs](#) / [Graduate Programs](#)

### ADDITIONAL PROGRAMS (non-matriculating/prep)

[Davee Media Library](#)

### PANDEMIC & SAFETY: SCHOOL POLICIES

[Policies & Procedures for this school](#)

Proof of vaccination required? (✓=Yes ✗=No)

✓ Students ✓ Faculty ✓ Staff

### SOCIAL LINKS



## Northwestern BIENEN SCHOOL OF MUSIC

[www.music.northwestern.edu](http://www.music.northwestern.edu)

### The Bienen School of Music offers

- A 152,000-square-foot state-of-the-art facility
- Conservatory-level training combined with the academic flexibility of an elite research institution
- Traditional BM, BA, MM, PhD, and DMA degrees as well as innovative dual-degree, self-designed, and double-major programs
- Close proximity to downtown Chicago





## BIOLA UNIVERSITY CONSERVATORY OF MUSIC

### Biola University

#### WHAT DISTINGUISHES THIS SCHOOL?

Students at Biola learn firsthand the rigors of musical composition and history, as well as the challenge of enhancing personal performance. They develop a sound Christian worldview taught by today's top thinkers and musicians while studying in the heart of Southern California—one of the world's leading music centers.

**LOCATION** 13800 Biola Avenue  
La Mirada, CA 90639  
UNITED STATES  
[www.biola.edu/music](http://www.biola.edu/music)

**ADMISSIONS** 562-903-4892  
[music@biola.edu](mailto:music@biola.edu)

**Audition Requirements** [Audition Requirements](#)  
All prospective Conservatory students must audition.

**FINANCIAL INFORMATION**  
[Tuition & Fees](#) / [Financial Aid & Scholarships](#)

#### CAREER / POST-GRADUATION ASSISTANCE

Conservatory faculty work closely with students on graduate school preparation and job placement. Worship majors are required to complete an internship at a local church. Music Education majors have required observation hours and a post-graduation semester-long student teaching assignment. Conservatory students also have the [Biola Career Center](#) as a resource.

**KEY STATISTICS** (college level and above)  
**175** music students  
**Music Faculty:** **10** full time, **15** adjunct

#### AREAS OF STUDY

Brass • Composition (Performance) • Guitar • Music Education • Music Therapy • Organ • Piano • Strings • Vocal Arts/Opera • Winds & Percussion • Commercial Music • Musical Theatre • New Media • Theatre • Worship Arts

**DEGREE PROGRAMS**  
[Undergraduate Programs](#)

**ONLINE COURSES**  
[Online courses information](#)

Additional plans under consideration

**PANDEMIC & SAFETY: SCHOOL POLICIES**  
[Policies & Procedures for this school](#)  
Proof of vaccination required? (✓=Yes ✗=No)  
✗ Students ✗ Faculty ✗ Staff

**SOCIAL LINKS**    

## BLAIR SCHOOL OF MUSIC

### Vanderbilt University

#### WHAT DISTINGUISHES THIS SCHOOL?

Vanderbilt's Blair School of Music is a world-class music program exclusively for undergraduates at a top-20 university.

**LOCATION** 2400 Blakemore Avenue  
Nashville, TN 37212  
UNITED STATES  
[blair.vanderbilt.edu/](http://blair.vanderbilt.edu/)

**ADMISSIONS** 615-322-6181  
[blair.inquiries@vanderbilt.edu](mailto:blair.inquiries@vanderbilt.edu)

**Audition Requirements** [Audition Requirements](#)

**FINANCIAL INFORMATION**  
[Tuition & Fees](#) / [Financial Aid & Scholarships](#)

**CAREER / POST-GRADUATION ASSISTANCE**  
[Career Assistance](#)  
[Alumni Center](#)

**KEY STATISTICS** (college level and above)  
**220** music students  
**Music Faculty:** **58** full time, **52** adjunct

#### AREAS OF STUDY

Brass • Composition (Performance) • Music Education • Piano • Strings • Vocal Arts/Opera • Winds & Percussion

**DEGREE PROGRAMS**  
[Undergraduate Programs](#)

*Additional details:* B. Mus. in Performance; B. Mus. in Composition; B. Mus. in Jazz Studies; B. Mus. & M.B.A.; B.Mus. in Integrated Studies; B. Musical Arts; B. Mus. & M.Ed.

**PANDEMIC & SAFETY: SCHOOL POLICIES**  
[Policies & Procedures for this school](#)

Proof of vaccination required? (✓=Yes ✗=No)  
✓ Students ✓ Faculty ✓ Staff

**SOCIAL LINKS**  



# BOSTON CONSERVATORY AT BERKLEE

## WHAT DISTINGUISHES THIS SCHOOL?

Boston Conservatory at Berklee is internationally recognized as an innovative leader among conservatory programs focused on elevating every aspect of the performing arts. The institution is committed to making all forms of performing arts a more visible and valued dimension of communities here and abroad.

**LOCATION** 8 Fenway  
Boston, MA 02215  
UNITED STATES  
[bostonconservatory.berklee.edu/](https://bostonconservatory.berklee.edu/)

**ADMISSIONS**  
617-912-9153  
[conservatoryadmissions@berklee.edu](mailto:conservatoryadmissions@berklee.edu)

**Audition Requirements** [Audition Requirements](#)

**FINANCIAL INFORMATION**  
[Tuition & Fees](#) / [Financial Aid & Scholarships](#)



## CAREER / POST-GRADUATION ASSISTANCE

The Berklee Career Center provides expert guidance, cutting-edge resources, and professional development experiences to help our diverse body of students achieve their career goals.

**KEY STATISTICS** (college level and above)  
351 music students  
**Music Faculty:** 43 full time, 71 adjunct

## AREAS OF STUDY

Brass • Collaborative Piano • Composition (Performance) • Conducting • Music Therapy • Organ • Piano • Strings • Vocal Arts/Opera • Winds & Percussion • Marimba • Musical Theater • Contemporary Classical Music Performance • Vocal Pedagogy, Classical Voice • Vocal Pedagogy, Musical Theater

## DEGREE PROGRAMS

[Undergraduate Programs](#) / [Graduate Programs](#)

**ADDITIONAL PROGRAMS** (non-matriculating/prep)  
[Summer Programs](#)  
[Extension Programs](#)

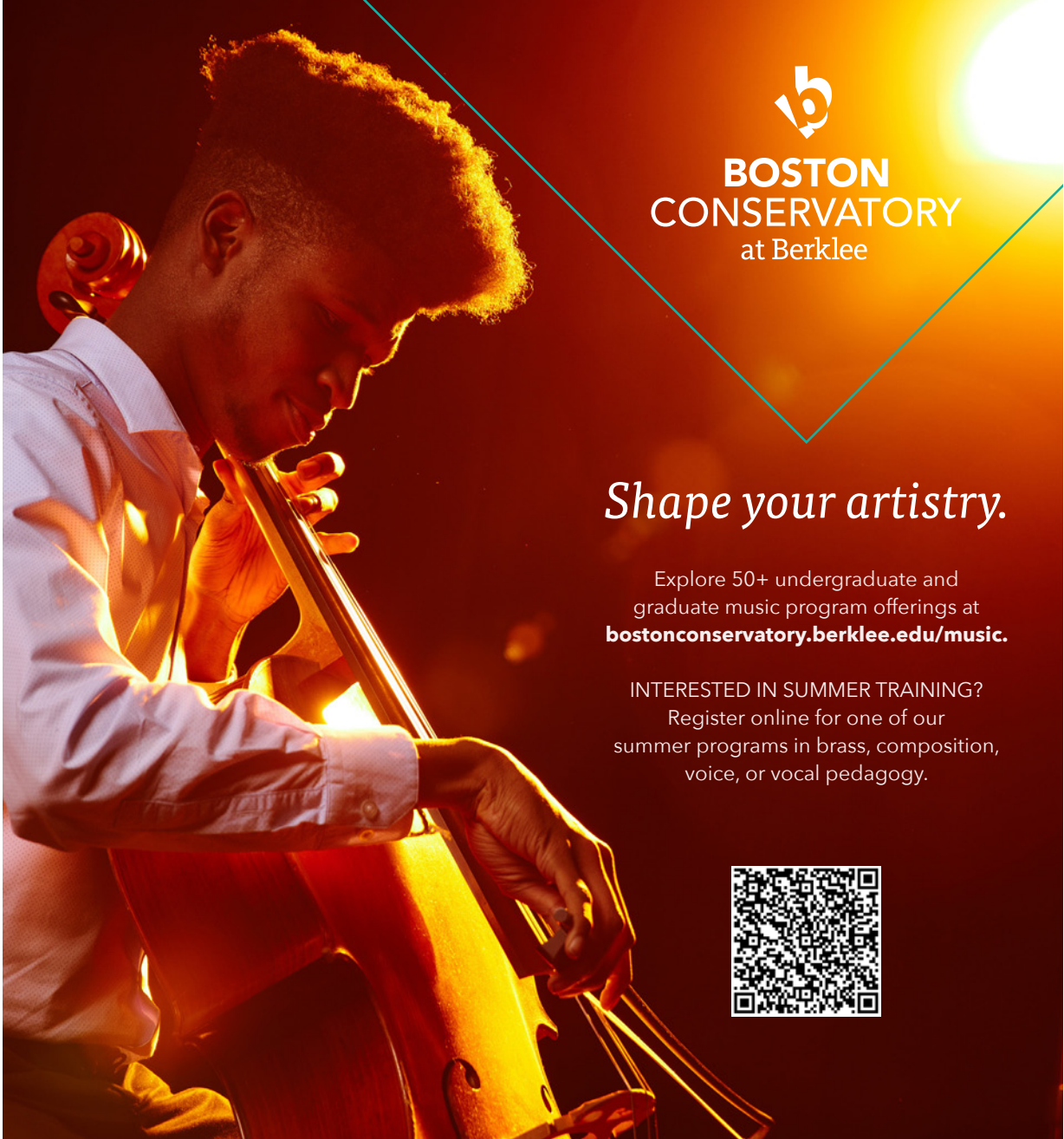
## ONLINE COURSES

[Online courses information](#)  
Additional plans under consideration

## PANDEMIC & SAFETY: SCHOOL POLICIES

[Policies & Procedures for this school](#)  
Proof of vaccination required? (✓=Yes ✗=No)  
✓ Students ✗ Faculty ✗ Staff

**SOCIAL LINKS**    



**BOSTON  
CONSERVATORY**  
at Berklee

*Shape your artistry.*

Explore 50+ undergraduate and graduate music program offerings at [bostonconservatory.berklee.edu/music](https://bostonconservatory.berklee.edu/music).

INTERESTED IN SUMMER TRAINING?  
Register online for one of our summer programs in brass, composition, voice, or vocal pedagogy.

## THE BUCHMANN-MEHTA SCHOOL OF MUSIC

### Tel Aviv University

#### WHAT DISTINGUISHES THIS SCHOOL?

A partnership between the Israel Philharmonic Orchestra and Tel Aviv University, the BMSM has an intimate relationship with the IPO's musicians (many on the faculty). Students benefit from master classes from the IPO's guest stars. Alumni span Itzhak Perlman, Menahem Pressler, and Lahav Shani. Free tuition, plus possible benefits for international students.

#### LOCATION

The Buchmann-Mehta  
School of Music  
Tel Aviv University  
Tel Aviv 6997801  
ISRAEL  
[en-arts.tau.ac.il/Music](http://en-arts.tau.ac.il/Music)

#### ADMISSIONS

+972 3-640-9505  
[interprog@tauex.tau.ac.il](mailto:interprog@tauex.tau.ac.il)

**Audition Requirements** [Audition Requirements](#)

#### FINANCIAL INFORMATION

[Tuition & Fees](#) / [Financial Aid & Scholarships](#)

## THE BUCHMANN-MEHTA SCHOOL OF MUSIC (cont'd)

### Tel Aviv University

#### KEY STATISTICS (college level and above)

**274** music students

**Music Faculty:** 50 full time, 8 adjunct

#### AREAS OF STUDY

Brass • Composition (Performance) • Conducting  
• Music Business • Music Education • Music Therapy  
• Organ • Piano • Strings • Vocal Arts/Opera

#### DEGREE PROGRAMS

[Undergraduate Programs](#) / [Graduate Programs](#)

#### PANDEMIC & SAFETY: SCHOOL POLICIES

Proof of vaccination required? (✓=Yes ✗=No)

✗ Students ✗ Faculty ✗ Staff

#### SOCIAL LINKS



The U School of Music fosters the next generation of performers, composers, scholars, and educators with **world-class faculty, state-of-the-art facilities, and student-focused learning programs.** Enroll today! Early action deadline is Dec. 1, 2022.



[music.utah.edu](http://music.utah.edu)

# CRANE

*Julia E. Crane*  
The Crane School of Music • SUNY Potsdam

Crane has **WORLD-CLASS FACULTY** who are here for you

Crane offers you a **WIDE VARIETY** of majors and minors

Crane is part of SUNY's premiere **ARTS-FOCUSED CAMPUS**

[potsdam.edu/crane](http://potsdam.edu/crane)  
1(877) POTSDAM



## SARAH AND ERNEST BUTLER SCHOOL OF MUSIC

The University of Texas at Austin

### WHAT DISTINGUISHES THIS SCHOOL?

Located in one of our nation's most musical cities, the Butler School of Music at The University of Texas at Austin offers comprehensive undergraduate and graduate programs designed to prepare artists, thinkers, makers, and teachers ready and able to make profound contributions to the future of music.

**LOCATION** 2406 Robert Dedman Drive  
Stop E3100  
Austin, TX 78712-1555  
UNITED STATES  
[www.music.utexas.edu](http://www.music.utexas.edu)

**ADMISSIONS** 512-471-7764  
[uga@mail.music.utexas.edu](mailto:uga@mail.music.utexas.edu)

**Audition Requirements** [Audition Requirements](#)

### FINANCIAL INFORMATION

[Tuition & Fees](#) / [Financial Aid & Scholarships](#)

### CAREER / POST-GRADUATION ASSISTANCE

[Fine Arts Career Services](#) offers resources tailored to the College of Fine Arts undergraduate and graduate student body. The dedicated team of fine arts career advisors work extensively with students to prepare them for an increasingly competitive arts industry. Graduation isn't the end of a student's relationship with FACS. The office remains accessible to alumni of the college for life. Career advising and planning services are also available from the university's [Center for Strategic Advising & Career Counseling](#).

### KEY STATISTICS (college level and above)

**650** music students

**Music Faculty:** **85** full time, **10** adjunct

### AREAS OF STUDY

Brass • Collaborative Piano • Composition (Performance) • Conducting • Guitar • Jazz Studies & Contemporary Media • Music Education • Musicology • Organ • Piano • Strings • Vocal Arts/Opera • Winds & Percussion • Chamber Music • Ethnomusicology • Literature and Pedagogy • Opera Coaching • Opera Directing

### DEGREE PROGRAMS

[Undergraduate Programs](#) / [Graduate Programs](#)

### PANDEMIC & SAFETY: SCHOOL POLICIES

[Policies & Procedures for this school](#)

Proof of vaccination required? (✓=Yes ✗=No)

✗ Students ✗ Faculty ✗ Staff

### SOCIAL LINKS



## CARNEGIE MELLON UNIVERSITY SCHOOL OF MUSIC

Carnegie Mellon University

### WHAT DISTINGUISHES THIS SCHOOL?

The School of Music combines the strengths of a conservatory with those of a global research university. Students are a part of a diverse fine arts community on campus and in the city of Pittsburgh.

**LOCATION** 5000 Forbes Avenue  
Pittsburgh, PA 15213  
UNITED STATES  
[music.cmu.edu/](http://music.cmu.edu/)

### ADMISSIONS

412-268-4118

[music-admissions@andrew.cmu.edu](mailto:music-admissions@andrew.cmu.edu)

**Audition Requirements** [Audition Requirements](#)

### FINANCIAL INFORMATION

[Tuition & Fees](#) / [Financial Aid & Scholarships](#)

### CAREER / POST-GRADUATION ASSISTANCE

Our distinguished alumni populate the ranks of the world's most prestigious orchestras, opera companies, and faculties including: the New York Philharmonic, Chicago Symphony Orchestra, The Metropolitan Opera, Harvard University, Prague Philharmonia, Oberlin College & Conservatory, Boston Pops, BBC Orchestras, Lyric Opera of Chicago, and many more.

### KEY STATISTICS (college level and above)

**350** music students

**Music Faculty:** **35** full time, **51** adjunct

### AREAS OF STUDY

Brass • Collaborative Piano • Composition (Performance) • Conducting • Guitar • Media studies (including audio and video production) • Piano • Strings • Vocal Arts/Opera • Winds & Percussion • Electronic Music • Music and Technology • Music Entrepreneurship • Orchestral Studies

### DEGREE PROGRAMS

[Undergraduate Programs](#) / [Graduate Programs](#)

*Additional details:* Interdisciplinary degrees (BXA)

### PANDEMIC & SAFETY: SCHOOL POLICIES

[Policies & Procedures for this school](#)

Proof of vaccination required? (✓=Yes ✗=No)

✓ Students ✗ Faculty ✗ Staff

### SOCIAL LINKS



## CLEVELAND INSTITUTE OF MUSIC

### WHAT DISTINGUISHES THIS SCHOOL?

CIM is an independent conservatory known for superior orchestral, chamber music, composition, piano, and voice programs at both the undergraduate and graduate levels. Its world-renowned faculty—many of whom are members of The Cleveland Orchestra—are eminent performers and pedagogues who cultivate life-long mentoring relationships with their students.

**LOCATION** 11021 East Boulevard  
Cleveland, OH 44106  
UNITED STATES  
[www.cim.edu](http://www.cim.edu)

**ADMISSIONS** 216-795-3107  
[admission@cim.edu](mailto:admission@cim.edu)

**Audition Requirements** [Audition Requirements](#)

### FINANCIAL INFORMATION

[Tuition & Fees](#) / [Financial Aid & Scholarships](#)

### CAREER / POST-GRADUATION ASSISTANCE

CIM's education focuses on high-level performance artistry coupled with the practical and essential skills necessary for a seamless transition into a professional career. For much of its nearly 100-year history, CIM's individual faculty members have engaged in career-focused coaching of students and alumni.

### [The CIM Center for Innovative Musicianship \(CIM2\)](#)

cements these tremendous career resources by building an educational framework, including the coursework and experiential learning necessary for successful career development.

### KEY STATISTICS (college level and above)

**330** music students

**Music Faculty:** **29** full time, **80** adjunct

### AREAS OF STUDY

Brass • Collaborative Piano • Composition (Performance) • Conducting • Musicology • Music Therapy • Organ • Piano • Strings • Vocal Arts/Opera

### DEGREE PROGRAMS

[Undergraduate Programs](#) / [Graduate Programs](#)

*Additional details:* Music Theory offered as an undergraduate double major only; Suzuki Pedagogy offered as master's program only; minor and dual degree programs offered in association with Case Western Reserve University

### PANDEMIC & SAFETY: SCHOOL POLICIES

Proof of vaccination required? (✓=Yes ✗=No)

✓ Students ✓ Faculty ✓ Staff

### SOCIAL LINKS



## Join Our Vibrant Community

At the School of Music, Theatre & Dance, performers, entrepreneurs, scholars, and educators realize their fullest potential. Students benefit from learning in a small, highly collaborative performing arts community, while taking full advantage of the experiences of a **world-class university**.

**Apply by December 1**  
**[smt.d.umich.edu](http://smt.d.umich.edu)**



SCHOOL OF  
**MUSIC, THEATRE & DANCE**  
UNIVERSITY OF MICHIGAN

*Lighting design and photograph  
by Johnathan Rickard  
(BMA '23, Multidisciplinary Studies)*





# COLBURN CONSERVATORY OF MUSIC

## WHAT DISTINGUISHES THIS SCHOOL?

Students receive full-tuition scholarships, room, and board. The Colburn Orchestra emulates a professional orchestra experience with distinguished guest conductors and Music Director Yehuda Gilad. Students perform alongside faculty and guest artists as part of the Colburn Chamber Music Society. Career development and wellness programs support all areas of student well-being.

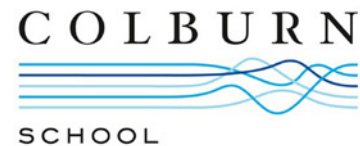
**LOCATION** 200 South Grand Avenue  
Los Angeles, CA 90012  
UNITED STATES  
[www.colburnschool.edu](http://www.colburnschool.edu)

**ADMISSIONS** 213-621-4534  
[admissions@colburnschool.edu](mailto:admissions@colburnschool.edu)

**Audition Requirements** [Audition Requirements](#)  
Undergraduate and Graduate

**FINANCIAL INFORMATION**  
[Tuition & Fees](#) / [Financial Aid & Scholarships](#)

**CAREER / POST-GRADUATION ASSISTANCE**  
The Colburn School offers a range of resources to help students and alumni plan and build their professional careers. All Conservatory students take two essential classes: the Healthy Musician, which teaches maintenance for professional health and the prevention of performance injuries, and the Working Musician, which offers a number of short courses designed to help them manage their careers as musicians. Undergrad students also take Teaching Musician, which equips them with pedagogy training.



[The Center for Innovation and Community Impact](#) offers individual advising and planning to Conservatory students, which allows them to tailor their experience to their own needs and goals. Career-development staff work with students one-on-one and find opportunities for them to further explore their interests. In addition, the center teaches students engagement skills, including creating programs to develop new audiences and become arts leaders.

**KEY STATISTICS** (college level and above)  
**135** music students  
**Music Faculty:** **15** full time, **26** adjunct

**AREAS OF STUDY**  
Brass • Conducting • Piano • Strings • Winds & Percussion

**DEGREE PROGRAMS**  
[Undergraduate Programs](#) / [Graduate Programs](#)  
*Additional details:* Bachelor of Music in Performance; Master of Music in Performance; Master of Music in Chamber Music; Undergraduate Performance Diploma; Undergraduate Performance Diploma with Conducting Emphasis; Graduate Artist Diploma with Emphasis in Performance, Chamber Music or Conducting; Graduate Professional Studies Certificate

**ADDITIONAL PROGRAMS** (non-matriculating/prep)  
[Music Academy](#)  
[Community School](#)  
[Dance](#)

**PANDEMIC & SAFETY: SCHOOL POLICIES**  
[Policies & Procedures for this school](#)  
Proof of vaccination required? (✓=Yes ✗=No)  
✓ Students ✗ Faculty ✗ Staff

**SOCIAL LINKS**    



World-renowned faculty, outstanding performance opportunities, and unparalleled financial support in the heart of LA.

## Welcoming New Faculty for 2022



Tatjana Masurenko  
Viola



David Rejano  
Trombone

All Conservatory students receive complete scholarship packages covering tuition, room, and board.

## Pre-College Study

The Music Academy brings exceptional students ages 14–18 to Colburn to prepare for study at the Colburn Conservatory and other top music programs worldwide.

[colburnschool.edu](http://colburnschool.edu)

Above: The Colburn Center, opening in 2026  
Frank Gehry, architect;  
Yasuhisa Toyota, acoustician

## COLUMBIA UNIVERSITY, TEACHERS COLLEGE

### WHAT DISTINGUISHES THIS SCHOOL?

Teachers College, Columbia University is the first and largest graduate school of education in the United States and is also perennially ranked among the nation's best. We serve current and aspiring educators who want to truly make a difference in the world.

### LOCATION

Teachers College  
Columbia University  
525 West 120th Street  
New York, NY 10027  
UNITED STATES  
[musiconlinehybrid.tc.columbia.edu/](https://musiconlinehybrid.tc.columbia.edu/)

### ADMISSIONS

877-238-6628  
[musiconlinehybrid@tc.columbia.edu](mailto:musiconlinehybrid@tc.columbia.edu)

### FINANCIAL INFORMATION

[Tuition & Fees](#) / [Financial Aid & Scholarships](#)

### CAREER / POST-GRADUATION ASSISTANCE

[The Teachers College Office of Career Education Professional Development \(CEPD\)](#) encourages students from all academic disciplines to incorporate career learning into the larger scope of their daily lives to make a positive impact in the global community. The office provides students with skills, tools, and opportunities to pursue and achieve their post-graduate goals.

### KEY STATISTICS (college level and above)

**235** music students

**Music Faculty:** 6 full time, 6 adjunct  
*Scholarship details:* The scholarship amount is \$11,034 based on the 2021-22 tuition.

### AREAS OF STUDY

Media studies (including audio and video production) • Music Business • Music Education

### DEGREE PROGRAMS

[Graduate Programs](#)

*Additional details:* Music and Music Education (Summer Cohort)

### ONLINE COURSES

[Online courses information](#)

76% to 100% will be available as hybrid or online-only courses

### PANDEMIC & SAFETY: SCHOOL POLICIES

[Policies & Procedures for this school](#)

Proof of vaccination required? (✓=Yes ✗=No)

✓ Students ✓ Faculty ✓ Staff

### SOCIAL LINKS



## COSERVATORIO DI MUSICA "ARRIGO BOITO"

### WHAT DISTINGUISHES THIS SCHOOL?

High level courses in classical, jazz, pop/rock, and early music in a strategic production center in the north of Italy.

### LOCATION

Via del Conservatorio 27/A  
43121 Parma  
ITALY  
[www.conservatorio.pr.it/](http://www.conservatorio.pr.it/)

### ADMISSIONS

+39 0521 381911  
[segreteria.didattica@conservatorio.pr.it](mailto:segreteria.didattica@conservatorio.pr.it)

**Audition Requirements** [Audition Requirements](#)

### FINANCIAL INFORMATION

[Tuition & Fees](#) / [Financial Aid & Scholarships](#)

### CAREER / POST-GRADUATION ASSISTANCE

[Career Assistance](#)

### KEY STATISTICS (college level and above)

**500** music students

**Music Faculty:** 120 full time, 30 adjunct

### AREAS OF STUDY

Brass • Collaborative Piano • Composition (Performance) • Conducting • Early Music • Guitar • Jazz Studies & Contemporary Media • Media studies (including audio and video production) • Music Business • Musicology • Music Therapy • Organ • Piano • Strings • Vocal Arts/Opera • Winds & Percussion • Pop/Rock • Accordion

### DEGREE PROGRAMS

[Undergraduate Programs](#) / [Graduate Programs](#)

### ONLINE COURSES

[Online courses information](#)

Additional plans under consideration

### PANDEMIC & SAFETY: SCHOOL POLICIES

Proof of vaccination required? (✓=Yes ✗=No)

✓ Students ✓ Faculty ✓ Staff

### SOCIAL LINKS





**IF MUSIC IS YOUR LIFE – MAKE IT YOUR LIVING!**

**ST★RMAKER<sup>360</sup>**

**Opportunities  
and Where  
to Find Them**



**Prepare for  
Your  
Future**

**WWW.STARMAKER360.COM**

**15 CLASSES THAT WILL HELP YOU ACHIEVE SUCCESS IN THE MUSIC BUSINESS**

**Managers, Agents, Promoters, Performers, Publicists, Songwriters, Attorneys, Record Label Startups will all benefit.**

**Presented by Jim Halsey Institute of Music and Entertainment Business**

## THE CRANE SCHOOL OF MUSIC

State University of New York at Potsdam

### WHAT DISTINGUISHES THIS SCHOOL?

Crane is an undergraduate-focused music school with attentive full-time faculty. We are part of SUNY Potsdam, an arts-centric school, with more than 500 music majors and where 25% of students major in the arts. At Crane, students can choose from a wide variety of programs and majors.

**LOCATION** 44 Pierrepont Avenue  
Potsdam, NY 13676  
UNITED STATES  
[www.potsdam.edu/crane](http://www.potsdam.edu/crane)

**ADMISSIONS** 315-267-2812  
[auditions@potsdam.edu](mailto:auditions@potsdam.edu)

**Audition Requirements** [Audition Requirements](#)

### FINANCIAL INFORMATION

[Tuition & Fees](#) / [Financial Aid & Scholarships](#)

### CAREER / POST-GRADUATION ASSISTANCE

Students in each major work closely with faculty and staff at Crane and SUNY Potsdam's Career Services Office in formulating their post-graduation plans. Crane alumni include thousands of educators, performers, composers, researchers, leaders in the music industry, and musicians of renown, a network of graduates who can be found throughout North America and around the world.

### KEY STATISTICS (college level and above)

**520** music students

**Music Faculty:** **74** full time, **18** adjunct

### AREAS OF STUDY

Arts Leadership • Brass • Composition (Performance)  
• Guitar • Music Business • Music Education  
• Musicology • Piano • Strings • Vocal Arts/Opera  
• Winds & Percussion

### DEGREE PROGRAMS

[Undergraduate Programs](#) / [Graduate Programs](#)

### ONLINE COURSES

[Online courses information](#)

Up to 25% will be available as hybrid or online-only courses

### PANDEMIC & SAFETY: SCHOOL POLICIES

[Policies & Procedures for this school](#)

Proof of vaccination required? (✓=Yes ✗=No)

✓ Students ✗ Faculty ✗ Staff

### SOCIAL LINKS



## CURTIS INSTITUTE OF MUSIC

### WHAT DISTINGUISHES THIS SCHOOL?

Curtis's celebrated faculty includes a high proportion of actively performing musicians whose experience provides students with a direct link to life as a professional musician today. With a student body of about 150 and 100 faculty members, all students receive highly personalized attention.

**LOCATION** 1726 Locust Street  
Philadelphia, PA 19103  
UNITED STATES  
[www.curtis.edu](http://www.curtis.edu)

**ADMISSIONS** 215-717-3167  
[admissions@curtis.edu](mailto:admissions@curtis.edu)

**Audition Requirements** [Audition Requirements](#)

Audition requirements vary by department.

### FINANCIAL INFORMATION

[Tuition & Fees](#) / [Financial Aid & Scholarships](#)

### CAREER / POST-GRADUATION ASSISTANCE

Curtis offers several professional bridge programs designed for young artists beginning their professional careers. These include fellowship programs for conductors and string quartets that offer numerous performance opportunities and mentorship from the Curtis faculty and guest artists. The post-graduate Community Artist Fellowship program brings art access and education to underserved communities, while providing training in teaching artistry, interactive performance, and strategic planning.

Alumni resources include access to the Careers in Music Speaker Series at Curtis; an online alumni engagement community with access to a directory

and professional opportunity boards; and an alumni e-mail address to maintain a visible presence with Curtis. The Young Alumni Fund ("YAF") is an annual grant program for recent graduates.

### KEY STATISTICS (college level and above)

**155** music students

**Music Faculty:** **3** full time, **115** adjunct

**155** scholarships awarded

*Scholarship details:* Approximately \$47,153 for undergraduate students and \$58,535 for graduate students

### AREAS OF STUDY

Brass • Composition (Performance) • Conducting  
• Guitar • Music Therapy • Organ • Piano • Strings  
• Vocal Arts/Opera • Winds & Percussion

### DEGREE PROGRAMS

[Undergraduate Programs](#) / [Graduate Programs](#)

*Additional details:* Fellowship Programs—  
[Conducting Fellowship](#); [String Quartet in Residence](#);  
[Community Artist Fellowship program](#)

### ADDITIONAL PROGRAMS (non-matriculating/prep)

[Summer Programs](#)

### ONLINE COURSES

[Online courses information](#)

Up to 25% will be available as hybrid or online-only courses

### PANDEMIC & SAFETY: SCHOOL POLICIES

[Policies & Procedures for this school](#)

Proof of vaccination required? (✓=Yes ✗=No)

✓ Students ✓ Faculty ✓ Staff

### SOCIAL LINKS





# DEPAUL UNIVERSITY SCHOOL OF MUSIC



## WHAT DISTINGUISHES THIS SCHOOL?

The DePaul University School of Music offers conservatory style, performance-based study within a large university in Chicago, a destination city for world-class arts. Students benefit from individualized study and rehearsal at the highest level among a supportive community of individuals striving to be their best.

**LOCATION** 804 West Belden Avenue  
Chicago, IL 60614  
UNITED STATES  
[music.depaul.edu](https://music.depaul.edu)

**ADMISSIONS** 773-325-7444  
[musicadmissions@depaul.edu](mailto:musicadmissions@depaul.edu)

**Audition Requirements** [Audition Requirements](#)  
Audition requirements vary slightly depending upon the degree an applicant is seeking.

**FINANCIAL INFORMATION**  
[Tuition & Fees](#) / [Financial Aid & Scholarships](#)

**CAREER / POST-GRADUATION ASSISTANCE**  
[Career Services](#) provides information and resources for School of Music students and alumni on various music and arts-related career opportunities. Career Services has a variety of different areas including assistance with freelance opportunities, workshops, résumé & cover-letter writing, a job database, and more. An Alumni Sharing Knowledge Network connects students with alumni.

## KEY STATISTICS (college level and above)

**410** music students

**Music Faculty:** 30 full time, 125 adjunct

**Scholarship details:** Scholarships range from \$5,000 to \$35,000 a year

## AREAS OF STUDY

Arts Leadership • Brass • Collaborative Piano  
• Composition (Performance) • Guitar • Jazz Studies  
& Contemporary Media • Media studies (including audio and video production) • Music Business  
• Music Education • Music Therapy • Organ • Piano  
• Strings • Vocal Arts/Opera • Winds & Percussion

## DEGREE PROGRAMS

[Undergraduate Programs](#) / [Graduate Programs](#)

*Additional details:* Bachelor of Arts in Music

## PANDEMIC & SAFETY: SCHOOL POLICIES

[Policies & Procedures for this school](#)

Proof of vaccination required? (✓=Yes ✗=No)

✓ Students ✓ Faculty ✓ Staff

## SOCIAL LINKS



Whether you perform it or teach it. Write it or produce it. You'll need the training and tools to turn it into a career. Designed to be rigorous and collaborative, our programs of study give you the experience and the knowledge to confidently pursue a life dedicated to music.



# Music is a craft and a calling.

[music.depaul.edu](https://music.depaul.edu) | 773.325.7444 | [musicadmissions@depaul.edu](mailto:musicadmissions@depaul.edu)

## EAST CAROLINA UNIVERSITY SCHOOL OF MUSIC

### WHAT DISTINGUISHES THIS SCHOOL?

ECU School of Music programs include the B.M., Music Education, B.M. (concentrations in music therapy, performance, and theory-composition), C.A.P.S.(Advanced Performance Studies Certificate), and Master of Music. Students benefit from a low professor-to-student ratio, exceptional extra-curricular opportunities, and a supportive community within the context of the large university experience.

**LOCATION** A.J. Fletcher Music Center  
East Carolina University  
Greenville, NC 27858-4353  
UNITED STATES  
[music.ecu.edu](http://music.ecu.edu)

**ADMISSIONS** 252-328-4281  
[musicadmissions@ecu.edu](mailto:musicadmissions@ecu.edu)

**Audition Requirements** [Audition Requirements](#)

### FINANCIAL INFORMATION

[Tuition & Fees](#) / [Financial Aid & Scholarships](#)

### CAREER / POST-GRADUATION ASSISTANCE

[Career Assistance](#)

**KEY STATISTICS** (college level and above)

**300** music students

**Music Faculty:** **39** full time, **15** adjunct

### AREAS OF STUDY

Brass • Collaborative Piano • Composition (Performance) • Conducting • Guitar • Jazz Studies & Contemporary Media • Music Education • Musicology • Music Therapy • Organ • Piano • Strings • Vocal Arts/Opera • Winds & Percussion

### DEGREE PROGRAMS

[Music Education](#)

[Bachelor of Music](#); [Master of Music](#)

[Certificate Programs](#)

### ADDITIONAL PROGRAMS (non-matriculating/prep)

[Four Seasons Chamber Music Festival](#)

[Jazz Festival](#)

[North Carolina NewMusic Initiative](#)

### ONLINE COURSES

[Online courses information](#)

Up to 25% will be available as hybrid or online-only courses

### PANDEMIC & SAFETY: SCHOOL POLICIES

Proof of vaccination required? (✓=Yes ✗=No)

✗ Students ✗ Faculty ✗ Staff

### SOCIAL LINKS



## EASTMAN SCHOOL OF MUSIC

### University of Rochester

### WHAT DISTINGUISHES THIS SCHOOL?

Eastman is dedicated to the highest levels of artistry and scholarship and to the broad education of young musicians within the context of a university. Our students enjoy a challenging but nurturing environment that focuses on artistic excellence while encouraging the pursuit of individual paths and interests.

**LOCATION** 26 Gibbs Street  
Rochester, NY 14604  
UNITED STATES  
[www.esm.rochester.edu](http://www.esm.rochester.edu)

**ADMISSIONS** 800-388-9695  
[admissions@esm.rochester.edu](mailto:admissions@esm.rochester.edu)

**Audition Requirements** [Audition Requirements](#)

### FINANCIAL INFORMATION

[Tuition & Fees](#) / [Financial Aid & Scholarships](#)

### CAREER / POST-GRADUATION ASSISTANCE

[Career Assistance](#)

**KEY STATISTICS** (college level and above)

**900** music students

**Music Faculty:** **135** full time, **50** adjunct

### AREAS OF STUDY

Arts Leadership • Brass • Collaborative Piano • Composition (Performance) • Conducting • Early Music • Guitar • Jazz Studies & Contemporary Media • Media studies (including audio and video production) • Music Business • Music Education • Musicology • Music Therapy • Organ • Piano • Strings • Vocal Arts/Opera • Winds & Percussion

### DEGREE PROGRAMS

[Undergraduate Programs](#) / [Graduate Programs](#)

### ADDITIONAL PROGRAMS (non-matriculating/prep)

[Institute for Music Leadership](#)

[Music Theory Fundamentals in 4 weeks](#)

### PANDEMIC & SAFETY: SCHOOL POLICIES

[Policies & Procedures for this school](#)

Proof of vaccination required? (✓=Yes ✗=No)

✓ Students ✓ Faculty ✓ Staff

### SOCIAL LINKS





## HANNS EISLER SCHOOL OF MUSIC BERLIN

### WHAT DISTINGUISHES THIS SCHOOL?

Musical excellence is our leitmotif and only the highest standards prevail. Exceptional musical personalities guarantee the quality of our musical education. We promote talent in its full-scale development—from the attainment of the finest technical precision to being ready to perform on stage.

**LOCATION** Hochschule für Musik  
Hanns Eisler Berlin  
Charlottenstr. 55  
D-10117 Berlin  
GERMANY  
[www.hfm-berlin.de/en/](http://www.hfm-berlin.de/en/)

**ADMISSIONS** +49 (0)30 688305-830  
[studienberatung@hfm-berlin.de](mailto:studienberatung@hfm-berlin.de)

**Audition Requirements** [Audition Requirements](#)

### FINANCIAL INFORMATION

[Tuition & Fees](#) / [Financial Aid & Scholarships](#)

**CAREER / POST-GRADUATION ASSISTANCE**  
[Eisleriana Artists Agency representaton services](#)

**KEY STATISTICS** (college level and above)  
**500** music students  
**Music Faculty:** **90** full time, **249** adjunct  
**80** scholarships awarded

### AREAS OF STUDY

Brass • Collaborative Piano • Composition  
(Performance) • Conducting • Guitar • Jazz Studies &  
Contemporary Media • Piano • Strings • Vocal Arts/  
Opera • Winds & Percussion • Stage Direction (Opera  
& Music Theatre) • Chamber Music • Repetiteur  
• Lied Interpretation for Pianists • Historical and  
Contemporary Compositional Technique  
• Electroacoustic Music • Production Dramaturgy for  
Music Theatre

### DEGREE PROGRAMS

[Undergraduate Programs](#) / [Graduate Programs](#)

**ADDITIONAL PROGRAMS** (non-matriculating/prep)  
[Competitions](#)

### PANDEMIC & SAFETY: SCHOOL POLICIES

[Policies & Procedures for this school](#)

Proof of vaccination required? (✓=Yes ✗=No)

✗ Students ✗ Faculty ✗ Staff

### SOCIAL LINKS



# Oberlin Conservatory Celebrating Tradition. Creating the Future.

At Oberlin, students are guided along diverse routes by expert faculty mentors. They are inspired through individualized instruction in studios and classes that launch compelling performances. And they are supported by campus resources that make imaginative projects possible.

This transformative education has launched cutting-edge music-makers including Musical America award winners Robert Spano, Jennifer Koh, Christopher Rouse, Jeremy Denk, and founders/members of ICE, Eighth Blackbird, Pacifica Quartet, and Boston Modern Orchestra Project.

**OBERLIN**  
COLLEGE & CONSERVATORY

[conservatory.admissions@oberlin.edu](mailto:conservatory.admissions@oberlin.edu)  
440-775-8413  
[oberlin.edu/con](http://oberlin.edu/con)

## FLORIDA STATE UNIVERSITY COLLEGE OF MUSIC

### Florida State University

#### WHAT DISTINGUISHES THIS SCHOOL?

FSU is home to one of the largest and most diverse music programs in the country, offering 25 degree programs at the undergraduate level alone. Our students participate in nearly 50 ensembles and perform in more than 500 concerts each year. Our graduates are highly successful beyond the classroom.

**LOCATION** 122 North Copeland Street  
Tallahassee, FL 32301  
UNITED STATES  
[music.fsu.edu](http://music.fsu.edu)

**ADMISSIONS** 850-644-6102  
[musicadmissions@fsu.edu](mailto:musicadmissions@fsu.edu)

**Audition Requirements** [Audition Requirements](#)

**FINANCIAL INFORMATION**  
[Tuition & Fees](#) / [Financial Aid & Scholarships](#)

**CAREER / POST-GRADUATION ASSISTANCE**  
Faculty mentors take an active role in placing and connecting their students to career opportunities, and a Career Liaison from the FSU Career Center works directly with the College of Music. The Allen Music Library sponsors workshops on résumé writing, and career development is a major focus

## FLORIDA STATE UNIVERSITY COLLEGE OF MUSIC (cont'd)

### Florida State University

of Music Entrepreneurship classes. Many programs include an internship component that helps lead directly to the first job. Music Education and Music Therapy programs have 100% job placement rate.

**KEY STATISTICS** (college level and above)  
**1050** music students  
**Music Faculty:** 88 full time, 6 adjunct  
*Scholarship details:* \$500-\$3,000

**AREAS OF STUDY**  
Arts Leadership • Brass • Collaborative Piano  
• Composition (Performance) • Conducting • Guitar  
• Jazz Studies & Contemporary Media • Media studies (including audio and video production)  
• Music Business • Music Education • Musicology  
• Music Therapy • Organ • Piano • Strings • Vocal Arts/Opera • Piano Technology • Piano Pedagogy • Sacred Music • Commercial Music • Music Theory • Opera Directing/Coaching

**DEGREE PROGRAMS**  
[Undergraduate Programs](#) / [Graduate Programs](#)  
*Additional details:* Summer Master of Music Education

**ADDITIONAL PROGRAMS** (non-matriculating/prep)  
[Summer Music Camps](#)

**PANDEMIC & SAFETY: SCHOOL POLICIES**  
[Policies & Procedures for this school](#)  
Proof of vaccination required? (✓=Yes ✗=No)  
✗ Students ✗ Faculty ✗ Staff

**SOCIAL LINKS**    

## The Shepherd School of Music at Rice

## The Future of Music.

A CONSERVATORY EXPERIENCE WITH THE ACADEMIC EXCELLENCE OF A RENOWNED PRIVATE UNIVERSITY



**RICE**

The Shepherd School of Music • Rice University  
[music.rice.edu](http://music.rice.edu) • 713-348-4854





## THE FREDONIA SCHOOL OF MUSIC

State University of New York at Fredonia

### WHAT DISTINGUISHES THIS SCHOOL?

Fredonia is leading the next generation of music professionals. Our Music Education program boasts an incredible 100% job placement rate after graduation, and our faculty and alumni are Grammy award winners year after year. Choose the power of Fredonia and turn your passion into your profession.

**LOCATION** 280 Central Avenue  
Fredonia, NY 14063  
UNITED STATES  
[www.fredonia.edu/music](http://www.fredonia.edu/music)

**ADMISSIONS** 716-673-3151  
[music@fredonia.edu](mailto:music@fredonia.edu)

**Audition Requirements** [Audition Requirements](#)

### FINANCIAL INFORMATION

[Tuition & Fees](#) / [Financial Aid & Scholarships](#)

### CAREER / POST-GRADUATION ASSISTANCE

[Fredonia Career Development Office](#)

### KEY STATISTICS (college level and above)

**521** music students

**Music Faculty:** **60** full time, **41** adjunct

### AREAS OF STUDY

Arts Leadership • Brass • Collaborative Piano  
• Composition (Performance) • Conducting • Guitar  
• Jazz Studies & Contemporary Media • Media studies (including audio and video production)  
• Music Business • Music Education • Musicology  
• Music Therapy • Organ • Piano • Strings • Vocal Arts/Opera • Winds & Percussion • Sound Recording Technology

### DEGREE PROGRAMS

[Undergraduate Programs](#) / [Graduate Programs](#)

*Additional details:* BA in Music (with tracks in performance, jazz, entrepreneurship, technology, and history & literature)

### ADDITIONAL PROGRAMS (non-matriculating/prep)

[The Claudette Sorel Piano Competition & Piano Fellows Program](#)  
[Robert Jordan Piano Festival](#)  
[Fredonia Summer Music Festival](#)

### ONLINE COURSES

[Online courses information](#)

Up to 25% will be available as hybrid or online-only courses

### PANDEMIC & SAFETY: SCHOOL POLICIES

[Policies & Procedures for this school](#)

Proof of vaccination required? (✓=Yes ✗=No)

✓ Students ✓ Faculty ✓ Staff

### SOCIAL LINKS



TianjinJuilliard  
天津茱莉亚学院

# Transforming passion into artistry

Earn a Master of Music degree from Juilliard

World-renowned faculty and guest artists

Robust scholarship and development

Unparalleled performance opportunities

Application opens September 1

[tianjinjuilliard.edu.cn](http://tianjinjuilliard.edu.cn)

Contact Admissions



Photo by Shengyi Visual

## FROST SCHOOL OF MUSIC

University of Miami

### WHAT DISTINGUISHES THIS SCHOOL?

The Frost School of Music is a dynamic place where exceptional students and faculty come together to transform the world of music. Brilliant performance, creativity, and scholarship are at our core.

**LOCATION** 5503 San Amaro Drive  
Coral Gables, FL 33146  
UNITED STATES  
[www.frost.miami.edu](http://www.frost.miami.edu)

**ADMISSIONS** 305-284-6168  
[admission.music@miami.edu](mailto:admission.music@miami.edu)

**Audition Requirements**  
[Undergraduate audition requirements](#)  
[Graduate audition requirements](#)

**FINANCIAL INFORMATION**  
[Tuition & Fees](#) / [Financial Aid & Scholarships](#)

### CAREER / POST-GRADUATION ASSISTANCE

Frost School of Music dean, faculty, and professional staff provide music career advisement to students during all years of study. The majority of students also enroll in music business courses. The University of Miami's [Toppel Career Center](#) is also available for consultation.

**KEY STATISTICS** (college level and above)  
**700** music students  
**Music Faculty:** **80** full time, **40** adjunct

### AREAS OF STUDY

Arts Leadership • Brass • Collaborative Piano  
• Composition (Performance) • Conducting • Guitar  
• Jazz Studies & Contemporary Media • Media studies (including audio and video production)  
• Music Business • Music Education • Musicology  
• Music Therapy • Piano • Strings • Vocal Arts/Opera  
• Winds & Percussion • Music Engineering  
Technology • Live Entertainment Management

### DEGREE PROGRAMS

[Undergraduate Programs](#) / [Graduate Programs](#)

### ONLINE COURSES

[Online courses information](#)  
Additional plans under consideration

### PANDEMIC & SAFETY: SCHOOL POLICIES

[Policies & Procedures for this school](#)  
Proof of vaccination required? (✓=Yes ✗=No)  
✗ Students ✓ Faculty ✓ Staff

**SOCIAL LINKS**     

## HUGH A. GLAUSER SCHOOL OF MUSIC

Kent State University

### WHAT DISTINGUISHES THIS SCHOOL?

Through discovering, integrating, and applying knowledge in a comprehensive and diverse range of bachelors, masters, and doctoral degree programs, we provide a dynamic learning environment that fosters artists, scholars, and teachers who will assume leadership roles in a global society.

**LOCATION** 1325 Theatre Drive E101  
Kent, OH 44242  
UNITED STATES  
[www.kent.edu/music](http://www.kent.edu/music)

**ADMISSIONS** 330-672-2172  
[schoolofmusic@kent.edu](mailto:schoolofmusic@kent.edu)

**Audition Requirements** [Audition Requirements](#)

**FINANCIAL INFORMATION**  
[Tuition & Fees](#) / [Financial Aid & Scholarships](#)

### CAREER / POST-GRADUATION ASSISTANCE

The College of the Arts at Kent State University, of which the School of Music is part, has a designated Career Advisor who serves both current students and alumni.

**KEY STATISTICS** (college level and above)  
**350** music students  
**Music Faculty:** **40** full time, **20** adjunct

### AREAS OF STUDY

Brass • Collaborative Piano • Composition  
(Performance) • Conducting • Guitar • Media studies  
(including audio and video production) • Music  
Business • Music Education • Music Therapy • Piano  
• Strings • Ethnomusicology • Music Theory • Strings  
(no harp)

### DEGREE PROGRAMS

[Undergraduate Programs](#) / [Graduate Programs](#)

### ONLINE COURSES

[Online courses information](#)  
Additional plans under consideration

### PANDEMIC & SAFETY: SCHOOL POLICIES

[Policies & Procedures for this school](#)  
Proof of vaccination required? (✓=Yes ✗=No)  
✓ Students ✓ Faculty ✓ Staff

**SOCIAL LINKS**     



# THE GLENN GOULD SCHOOL AT THE ROYAL CONSERVATORY OF MUSIC

The mission of The Royal Conservatory of Music, which founded The Glenn Gould School, is to develop human potential—and advancing the transformative effect that music and the arts have on society lies at the heart of everything The Royal Conservatory does. The Glenn Gould School builds on the Conservatory's 130-year history of excellence by providing talented classical music performers with the skills and attributes necessary for professional success.

## WHAT DISTINGUISHES THIS SCHOOL?

Committed to mentoring, our purposefully small school offers exceptional practice and performance spaces, and 50% more private lesson time with inspiring, well-known faculty.

**LOCATION** TELUS Centre  
for Performance and Learning  
273 Bloor Street West  
Toronto, ON M5S 1W2  
CANADA  
[rcmusic.com/ggs](http://rcmusic.com/ggs)

**ADMISSIONS** 800-462-3815  
[glenngouldschool@rcmusic.ca](mailto:glenngouldschool@rcmusic.ca)

**Audition Requirements** [Audition Requirements](#)

## FINANCIAL INFORMATION

[Tuition & Fees](#) / [Financial Aid & Scholarships](#)

## CAREER / POST-GRADUATION ASSISTANCE

[The Rebanks Family Fellowship and International Performance Residency Program](#) is a one-year



postgraduate program of The Royal Conservatory's Glenn Gould School. Created for artists on the cusp of a professional career, it offers a rich curriculum for career development including: private study with exceptional faculty and guest artists; concert presentations and career coaching; and marketing training and support. Each Rebanks Fellow also participates in a funded European residency.

**KEY STATISTICS** (college level and above)

**130** music students

**Music Faculty:** **43** full time, **32** adjunct

## AREAS OF STUDY

Brass • Music Therapy • Piano • Strings • Vocal Arts/Opera • Winds & Percussion

## DEGREE PROGRAMS

[Bachelor of Music, Performance \(Honours\)](#)

[Undergraduate Programs](#)

[Artist Diploma Program \(two-year\)](#)

[The Rebanks Family Fellowship and International](#)

[Performance Residency Program \(1 year\)](#)

## ADDITIONAL PROGRAMS (non-matriculating/prep)

[The Taylor Academy: Specialized training for gifted young musicians](#)

[The RCM Certificate Program](#)

## PANDEMIC & SAFETY: SCHOOL POLICIES

[Policies & Procedures for this school](#)

Proof of vaccination required? (✓=Yes ✗=No)

✗ Students ✗ Faculty ✗ Staff

## SOCIAL LINKS



This is your classroom.

## Study at The Glenn Gould School

Based in Toronto, GGS is a post-secondary institution with a focus on performance. Our school has **world-renowned faculty, numerous performance opportunities** in **exceptional facilities**, including the acclaimed Koerner Hall, **generous scholarship support**, and a **cap of 130 students**, each of whom receives **90 minutes** of individual studio instruction weekly.

**The Glenn Gould School offers degrees and diplomas for three levels of study:** Bachelor of Music, Performance (Honours)\*, the Artist Diploma (for post-Bachelor studies), and The Rebanks Family Fellowship and International Performance Residency (for post-graduate studies).

## Programs of Study

**The Temerty Orchestral Program**  
working with noted conductors such as  
Tania Miller and Gabor Takács-Nagy

**The Ihnatowycz Piano Program**  
under the leadership of James  
Anagnoson, Dean, includes  
distinguished artists and teachers  
John O'Connor and John Perry

**Vocal Studies and  
the Price Opera Program**  
with Adrienne Pieczonka, Chair



[rcmusic.com/ggs/prospectus](http://rcmusic.com/ggs/prospectus)



\* This institution has been granted a consent by the Minister of Training, Colleges and Universities to offer this program for a seven-year term starting October 12, 2017. Prospective students are responsible for satisfying themselves that the program and the degree will be appropriate to their needs (e.g., acceptable to potential employers, professional licensing bodies or other educational institutions.)

## HALL-MUSCO CONSERVATORY OF MUSIC

Chapman University

### WHAT DISTINGUISHES THIS SCHOOL?

We specialize in undergraduate education for musicians, promoting their artistic, professional, and intellectual development. Our students enjoy exceptional performance opportunities in state-of-the-art facilities with internationally renowned faculty who know them by name. Come here to hone your craft and turn your passion into profession.

**LOCATION** Chapman University  
One University Drive  
Orange, CA 92866  
UNITED STATES  
[chapman.edu/music](http://chapman.edu/music)

**ADMISSIONS** 714-516-5223  
[copadmit@chapman.edu](mailto:copadmit@chapman.edu)

### Audition Requirements [Audition Requirements](#)

Students seeking admission to one of our music programs must follow University guidelines to apply and submit a Common Application. Each music program also requires a creative supplement, program-specific materials, and a letter of recommendation (if invited for an in-person audition).

### FINANCIAL INFORMATION

[Tuition & Fees](#) / [Financial Aid & Scholarships](#)

### CAREER / POST-GRADUATION ASSISTANCE

[Career Assistance](#)

### KEY STATISTICS (college level and above)

**220** music students

**Music Faculty: 21** full time, **61** adjunct

*Scholarship details:* \$28,000

### AREAS OF STUDY

Brass • Collaborative Piano • Composition (Performance) • Conducting • Guitar • Media studies (including audio and video production) • Music Education • Piano • Strings • Vocal Arts/Opera • Winds & Percussion

### DEGREE PROGRAMS

[Undergraduate Programs](#) / [Graduate Programs](#)

*Additional details:* B.M. in Music Performance, Solo Piano; M.M. in Keyboard Collaborative Arts; B.A. in Music; Minors in music business, film music, general music, music technology

### PANDEMIC & SAFETY: SCHOOL POLICIES

[Policies & Procedures for this school](#)

Proof of vaccination required? (✓=Yes ✗=No)

✗ Students ✗ Faculty ✗ Staff

### SOCIAL LINKS



## HALSEY INSTITUTE OF MUSIC AND ENTERTAINMENT BUSINESS

### WHAT DISTINGUISHES THIS SCHOOL?

This program prepares a student to get a job in the music industry with 15 hours of vital music business information from 40 top-level professionals.

**LOCATION** PO Box 1000  
Mounds, OK 74047  
UNITED STATES  
[www.starmaker360.com](http://www.starmaker360.com)

**ADMISSIONS** 918-628-0400  
[mark@jimhalsey.com](mailto:mark@jimhalsey.com)

### FINANCIAL INFORMATION

[Tuition & Fees](#)

### CAREER / POST-GRADUATION ASSISTANCE

There is not a specific employment-assistance program. The course is designed to give students the information needed to get started immediately in the industry.

### KEY STATISTICS (college level and above)

**Music Faculty: 2** full time

### AREAS OF STUDY

Music Business

*Additional details:* This is not a degree program; it is intelligence and information equivalent to most Associates degrees. This is a streamlined, online version of the Music and Entertainment Business degree offered at Oklahoma City University 1994-1998, which won the Oklahoma Governor's Award for Arts and Education.

### ONLINE COURSES

[Online courses information](#)

76% to 100% will be available as hybrid or online-only courses

### PANDEMIC & SAFETY: SCHOOL POLICIES

Proof of vaccination required? (✓=Yes ✗=No)

✗ Students ✗ Faculty ✗ Staff

### SOCIAL LINKS





## THE HARTT SCHOOL

### University of Hartford

#### WHAT DISTINGUISHES THIS SCHOOL?

The Hartt School is a collaborative environment where students engage with the professional world in meaningful ways to enhance their education and professional network. Faculty get to know each student and guide them as they develop their artistry and career path.

**LOCATION** 200 Bloomfield Avenue  
West Hartford, CT 06117  
UNITED STATES  
[www.hartford.edu/hartt](http://www.hartford.edu/hartt)

**ADMISSIONS** 860-768-4465  
[harttadm@hartford.edu](mailto:harttadm@hartford.edu)

#### Audition Requirements [Audition Requirements](#)

An audition and/or interview is required for all programs; visit website for more information.

#### FINANCIAL INFORMATION

[Tuition & Fees](#) / [Financial Aid & Scholarships](#)

#### CAREER / POST-GRADUATION ASSISTANCE

At Hartt, students are provided professional experiences under faculty guidance and are fully prepared to begin their careers upon graduation. All degree programs at Hartt include career preparation coursework and undergraduate performance majors can choose a minor in performing arts management. The University of Hartford's [career services](#) office has a career counselor dedicated to the arts and resources to assist Hartt students in beginning their careers. The career services office remains a free resource to alumni.

#### KEY STATISTICS (college level and above)

**400** music students

**Music Faculty:** **48** full time, **100** adjunct

#### AREAS OF STUDY

Arts Leadership • Brass • Composition (Performance) • Conducting • Early Music • Guitar • Jazz Studies & Contemporary Media • Media studies (including audio and video production) • Music Business • Music Education • Organ • Piano • Strings • Vocal Arts/Opera • Winds & Percussion • Music Management • Acoustical Engineering and Music • Music and Performing Arts Management • Musical Theatre • Actor Training • Stage Management • Technical Theatre • Ballet Pedagogy • Dance Performance

#### DEGREE PROGRAMS

[Undergraduate Programs](#) / [Graduate Programs](#)

#### ADDITIONAL PROGRAMS (non-matriculating/prep)

[Hartt School Community Division](#)

#### PANDEMIC & SAFETY: SCHOOL POLICIES

[Policies & Procedures for this school](#)

Proof of vaccination required? (✓=Yes ✗=No)

✓ Students ✓ Faculty ✓ Staff

#### SOCIAL LINKS



## IU JACOBS SCHOOL OF MUSIC

### Indiana University

#### WHAT DISTINGUISHES THIS SCHOOL?

The more than 1,500 students who study at the Jacobs School of Music benefit from the intensity and focus of a conservatory combined with the broad academic offerings of a major university. The breadth and number of performance opportunities are unparalleled in college music study.

**LOCATION** Indiana University  
Jacobs School of Music  
Simon Music Building  
200 South Eagleson Avenue  
Bloomington, IN 47405  
UNITED STATES  
[www.music.indiana.edu](http://www.music.indiana.edu)

**ADMISSIONS** 812-855-7998  
[musicadm@indiana.edu](mailto:musicadm@indiana.edu)

#### Audition Requirements [Audition Requirements](#)

All programs in the Jacobs School of Music require an audition or interview, and in some cases, both. Many programs also require a pre-screening.

Select your area's page for more information regarding audition/interview and/or prescreen repertoire requirements. Many of our programs require you to submit prescreen recordings and/or materials.

#### FINANCIAL INFORMATION

[Tuition & Fees](#) / [Financial Aid & Scholarships](#)

#### CAREER / POST-GRADUATION ASSISTANCE

[Offerings include](#) expert guidance, education programs, extensive resources, project mentoring, as well as a wide variety of events. In collaboration with the graduate and undergraduate offices,

the OECD provides one-on-one career advising, multiple online tools, an alumni mentorship program, departmental career days, mentorship to student organizations and projects, and digital publications. An undergraduate Certificate in Music Entrepreneurship (15 credits) is offered by the OECD in partnership with the Kelley School of Business.

#### KEY STATISTICS (college level and above)

**1600** music students

**Music Faculty:** **175** full time, **30** adjunct

#### AREAS OF STUDY

Brass • Collaborative Piano • Composition (Performance) • Conducting • Early Music • Guitar • Jazz Studies & Contemporary Media • Media studies (including audio and video production) • Music Business • Music Education • Musicology • Music Therapy • Organ • Piano • Strings • Winds & Percussion • Audio Engineering and Sound Production • Ballet • Chamber and Collaborative Music • Choral Conducting • Music Entrepreneurship

#### DEGREE PROGRAMS

[Undergraduate Programs](#) / [Graduate Programs](#)

#### ONLINE COURSES

[Online courses information](#)

Additional plans under consideration

#### PANDEMIC & SAFETY: SCHOOL POLICIES

[Policies & Procedures for this school](#)

Proof of vaccination required? (✓=Yes ✗=No)

✓ Students ✓ Faculty ✓ Staff

#### SOCIAL LINKS



# THE JUILLIARD SCHOOL

The mission of The Juilliard School is to provide the highest caliber of artistic education for gifted musicians, dancers, and actors from around the world, so that they may achieve their fullest potential as artists, leaders, and global citizens.

## WHAT DISTINGUISHES THIS SCHOOL?

Since 1905, Juilliard has educated the world's foremost musicians, dancers, actors, and playwrights. Our Lincoln Center campus, with its world-renowned faculty, continues to be a launch pad for the next generation of performing artists.

**LOCATION** 60 Lincoln Center Plaza  
New York, NY 10023  
UNITED STATES  
[www.juilliard.edu](http://www.juilliard.edu)

**ADMISSIONS** 212-799-5000 x223  
[musicadmissions@juilliard.edu](mailto:musicadmissions@juilliard.edu)

**Audition Requirements** [Audition Requirements](#)

## FINANCIAL INFORMATION

[Tuition & Fees](#) / [Financial Aid & Scholarships](#)

## CAREER / POST-GRADUATION ASSISTANCE

[The Alan D. Marks Center for Career Services and Entrepreneurship](#) at Juilliard provides a comprehensive integration of career services programs and entrepreneurial strategies into the ecosystem of the Juilliard community, preparing

# Juilliard

graduates across all disciplines to be confident professionals at the intersection of creativity, technology, and business. Critical required coursework for entering students, extensive co-curricular programming, professional networking and consultations, and post-graduate grant resources are provided through the Center, as well as advanced elective coursework that has been created and will be continually revised and updated to match the ever-changing landscape.

**KEY STATISTICS** (college level and above)  
**676** music students  
**Music Faculty:** **173** full time, **132** adjunct

## AREAS OF STUDY

Brass • Collaborative Piano • Composition (Performance) • Conducting • Early Music • Guitar • Jazz Studies & Contemporary Media • Organ • Piano • Strings • Vocal Arts/Opera • Winds & Percussion • Dance • Acting • Playwriting

## DEGREE PROGRAMS

[Undergraduate Programs](#) / [Graduate Programs](#)

## ADDITIONAL PROGRAMS (non-matriculating/prep)

[Cross-Registration Programs with Barnard College or Columbia University](#)  
[Preparatory Division for Ages 8 to 18](#)

## PANDEMIC & SAFETY: SCHOOL POLICIES

[Policies & Procedures for this school](#)

Proof of vaccination required? (✓=Yes ✗=No)

✓ Students ✓ Faculty ✓ Staff

## SOCIAL LINKS



# Juilliard



PHOTO: CLAUDIO PAPAPIETRO

# Transforming passion into artistry

Join a supportive community of talented young musicians, incomparable faculty, and renowned guest teachers and take advantage of all that Juilliard offers, including

- Undergraduate and graduate degrees and diplomas
- A curriculum designed to develop your artistic and intellectual curiosity
- A conservatory environment that fosters interdisciplinary collaborations across Juilliard's dance, drama, and music divisions
- Performance opportunities at iconic venues on our Lincoln Center campus, throughout New York City, and beyond

APPLY BY DECEMBER 1

[juilliard.edu](http://juilliard.edu)



## LONGY SCHOOL OF MUSIC

### Bard College

#### WHAT DISTINGUISHES THIS SCHOOL?

The world needs music now more than ever. At Longy, we prepare students to become exceptional musicians who can engage new audiences; teach anyone, anywhere; and use artistry to change lives in communities around the world. Join us and become the musician the world needs you to be.

**LOCATION** 27 Garden Street  
Cambridge, MA 02138  
UNITED STATES  
[longy.edu](http://longy.edu)

**ADMISSIONS** 617-876-0956  
[admissions@longy.edu](mailto:admissions@longy.edu)

**Audition Requirements** [Audition Requirements](#)  
Longy's entire application process is barrier-free: It's free to apply • No repertoire requirements • Perform the music that best represents your artistry and do it in whatever clothes make you feel invincible • Choose your timeline, including an Early Action option • Reach out and talk to us—email, call, Zoom, WhatsApp

**FINANCIAL INFORMATION**  
[Tuition & Fees](#) / [Financial Aid & Scholarships](#)

**CAREER / POST-GRADUATION ASSISTANCE**  
At Longy, career coaching is a transformational process of self-discovery. Coaching ties together the threads of the Catalyst Curriculum—helping to guide your selection of courses by taking you from where you are now to where you'd like to be. Plus, Longy students perform professionally with faculty on concert stages around the city and are exposed

to many networking opportunities. Teaching Assistantships or Graduate Fellowships reduce tuition by up to \$10,000 per year.

**KEY STATISTICS** (college level and above)  
**300** music students  
**Music Faculty:** **0** full time, **127** adjunct  
**300** scholarships awarded  
*Scholarship details:* \$25,000

**AREAS OF STUDY**  
Brass • Collaborative Piano • Composition (Performance) • Early Music • Guitar • Jazz Studies & Contemporary Media • Music Business • Music Education • Musicology • Music Therapy • Organ • Piano • Strings • Vocal Arts/Opera • Chamber Music • Historical Performance • Dalcroze Eurhythmics • Music Theory

**DEGREE PROGRAMS**  
[Undergraduate Programs](#) / [Graduate Programs](#)  
*Additional details:* Master of Music in Music Education Online; Teacher Education Professional Development; Certified Music Practitioner

**ONLINE COURSES**  
[Online courses information](#)  
Additional plans under consideration

**PANDEMIC & SAFETY: SCHOOL POLICIES**  
[Policies & Procedures for this school](#)  
Proof of vaccination required? (✓=Yes ✗=No)  
✓ Students ✓ Faculty ✓ Staff

**SOCIAL LINKS**     

## MANHATTAN SCHOOL OF MUSIC

#### WHAT DISTINGUISHES THIS SCHOOL?

Manhattan School of Music takes full advantage of New York's abundant learning and performance opportunities, preparing highly talented students for careers as passionate performers and composers and to be imaginative, effective leaders in the arts. Our students thrive in a supportive atmosphere that encourages excellence, values individuals, and welcomes innovation.

**LOCATION** 130 Claremont Avenue  
New York, NY 10027  
UNITED STATES  
[www.msmnyc.edu](http://www.msmnyc.edu)

**ADMISSIONS** 917-493-4436  
[admission@msmnyc.edu](mailto:admission@msmnyc.edu)

**Audition Requirements** [Audition Requirements](#)  
All applicants who have completed their online application and passed prescreening (if applicable) must audition in order to be admitted to MSM.

**FINANCIAL INFORMATION**  
[Tuition & Fees](#) / [Financial Aid & Scholarships](#)

**CAREER / POST-GRADUATION ASSISTANCE**  
MSM's [Center for Career Readiness and Community Impact](#) (CCRCI): The CCRCI staff provides professional career coaching in a supportive environment. In individual sessions, students can explore their goals and create action plans for success.

In addition to career-advancing coursework, the program's highlights include a series of arts partnerships with local K–12 schools and memory care facilities; MSM performances for visiting school groups; teaching placements for CCRCI participants;

a dynamic calendar of Setting the Stage workshops, resources for current students/alumni (including the Hire A Musician referral service, Private Teacher Directory, and Online Opportunities Board); and one-on-one career advising.

**KEY STATISTICS** (college level and above)  
**1,000** music students  
**Music Faculty:** **89** full time, **166** adjunct  
*Scholarship details:* \$22,000

**AREAS OF STUDY**  
Brass • Collaborative Piano • Composition (Performance) • Conducting • Guitar • Jazz Studies & Contemporary Media • Organ • Piano • Strings • Vocal Arts/Opera • Winds & Percussion

**DEGREE PROGRAMS**  
[Bachelor of Music](#) / [Graduate Programs](#)  
*Additional details:* Musical Theatre (B.M. only); Orchestral Performance (M.M., P.S, P.P.D only); Classical Contemporary Performance (M.M., P.S, P.P.D only)

**ADDITIONAL PROGRAMS** (non-matriculating/prep)  
[Unique learning opportunities beyond the general academic curriculum](#)  
[The Global Conservatoire](#)—a joint effort among MSM, Royal College of Music (London), Royal Danish Academy of Music, and mdw—University of Music and Performing Arts Vienna

**PANDEMIC & SAFETY: SCHOOL POLICIES**  
[Policies & Procedures for this school](#)  
Proof of vaccination required? (✓=Yes ✗=No)  
✓ Students ✓ Faculty ✓ Staff

**SOCIAL LINKS**    

## MANNES SCHOOL OF MUSIC

### The New School

#### WHAT DISTINGUISHES THIS SCHOOL?

The curriculum at Mannes breathes new life into traditional conservatory education, offering students rigorous training together with unique opportunities to grow as artists through cross-disciplinary collaboration, entrepreneurial innovation, and social engagement. A Mannes education prepares students to live their best life in the arts and influence society through their work.

**LOCATION** 55 West 13th Street  
New York, NY 10011  
UNITED STATES  
[www.newschool.edu/mannes](http://www.newschool.edu/mannes)

**ADMISSIONS** 212-580-0210 x4862  
[performingarts@newschool.edu](mailto:performingarts@newschool.edu)

**Audition Requirements** [Audition Requirements](#)

#### FINANCIAL INFORMATION

[Tuition & Fees](#) / [Financial Aid & Scholarships](#)

#### CAREER / POST-GRADUATION ASSISTANCE

At Mannes, students receive exceptional preparation for careers in music by engaging in a highly progressive curriculum aimed not only at developing their unique artistic voice but also at exploring how to use that voice to engage with the world around them. Students benefit from the mentorship and guidance of world-class faculty and supportive administrative staff. They participate in partnerships with top-tier arts organizations such as

the Martha Graham Dance Company, the Orchestra of Saint Luke's, International Contemporary Ensemble, the Buffalo Philharmonic, and many more. The New School's Career Services office helps students build their professional networks by fostering connections with alumni, faculty, and employers.

**KEY STATISTICS** (college level and above)  
**460** music students

**Music Faculty:** **10** full time, **238** adjunct

#### AREAS OF STUDY

Arts Leadership • Brass • Collaborative Piano  
• Composition (Performance) • Conducting • Guitar  
• Music Business • Musicology • Piano • Strings • Vocal Arts/Opera • Winds & Percussion

#### DEGREE PROGRAMS

[Undergraduate Programs](#) / [Graduate Programs](#)

*Additional details:* MA Arts Management and Entrepreneurship; Master of Music Performer-Composer

#### PANDEMIC & SAFETY: SCHOOL POLICIES

[Policies & Procedures for this school](#)

Proof of vaccination required? (✓=Yes ✗=No)

✓ Students ✓ Faculty ✓ Staff

#### SOCIAL LINKS



## ROBERT MCDUFFIE CENTER FOR STRINGS

### Mercer University

#### WHAT DISTINGUISHES THIS SCHOOL?

Founded as a special institute within Mercer University's Townsend School of Music, the McDuffie Center for Strings is limited to 26 students: 12 violinists, six violists, six cellists and two bassists. All accepted students receive a full-tuition scholarship to study with an unparalleled faculty of international performing artists.

**LOCATION** 1501 Mercer University Drive  
Macon, GA 31207  
UNITED STATES  
[mcduffie.mercer.edu](http://mcduffie.mercer.edu)

**ADMISSIONS** 478-301-2886  
[mcduffiecenter@merc.edu](mailto:mcduffiecenter@merc.edu)

**Audition Requirements** [Audition Requirements](#)

Two contrasting movements of solo Bach: a concerto movement; an etude/caprice of your choice

#### FINANCIAL INFORMATION

[Tuition & Fees](#)

#### CAREER / POST-GRADUATION ASSISTANCE

[Career Assistance](#)

**KEY STATISTICS** (college level and above)

**26** music students

**Music Faculty:** **3** full time, **11** adjunct

**26** scholarships awarded

*Scholarship details:* All students receive full tuition scholarship

#### AREAS OF STUDY

Brass • Collaborative Piano • Conducting • Music Education • Organ • Piano • Strings • Vocal Arts/Opera • Winds & Percussion • Strings: violin, viola, cello and bass

#### DEGREE PROGRAMS

[Undergraduate Programs](#) / [Graduate Programs](#)

*Additional details:* Bachelor of Music with Elective Studies in Business; Bachelor of Music; Artist Diploma (post-baccalaureate only)

#### PANDEMIC & SAFETY: SCHOOL POLICIES

[Policies & Procedures for this school](#)

Proof of vaccination required? (✓=Yes ✗=No)

✗ Students ✗ Faculty ✗ Staff

**SOCIAL LINKS** 



## NEW ENGLAND CONSERVATORY

### WHAT DISTINGUISHES THIS SCHOOL?

NEC is a premier conservatory that values exploration, collaboration, and community. Students are mentored by a devoted faculty of esteemed artist-teachers and scholars. Alumni fill orchestra chairs, concert halls, jazz clubs, recording studios, and arts management positions worldwide.

**LOCATION** 290 Huntington Avenue  
Boston, MA 02115  
UNITED STATES  
[necmusic.edu](http://necmusic.edu)

**ADMISSIONS** 617-585-1101  
[admission@necmusic.edu](mailto:admission@necmusic.edu)

**Audition Requirements** [Audition Requirements](#)

### FINANCIAL INFORMATION

[Tuition & Fees](#) / [Financial Aid & Scholarships](#)

### CAREER / POST-GRADUATION ASSISTANCE

Our [Entrepreneurial Musicianship](#) program provides students and alumni with individual advising and career coaching, courses to gain professional skill within the conservatory curriculum, pathways to gain professional experience through hands-on learning, and opportunities to fund and incubate new creative work.

A recognized trailblazer, NEC's [Community Performances and Partnerships Program](#) is one of the premier programs in the nation for engaging conservatory students with their community through robust, meaningful partnership activities

and high quality training. CPP interacts annually with close to 21,000 people through over 600 events that reach across ages, neighborhoods, ethnicities, and economic disparities in the city of Boston and beyond. CPP simultaneously provides NEC students with a crucial opportunity to explore what it means to be a musician living in and contributing to community life, within an atmosphere of supportive mentoring, professional development, and experiential learning.

**KEY STATISTICS** (college level and above)  
**800** music students  
**Music Faculty:** **124** full time, **263** adjunct

### AREAS OF STUDY

Brass • Collaborative Piano • Composition (Performance) • Conducting • Guitar • Jazz Studies & Contemporary Media • Musicology • Piano • Strings • Vocal Arts/Opera • Winds & Percussion

### DEGREE PROGRAMS

[Undergraduate Programs](#) / [Graduate Programs](#)

*Additional details:* Collaborative Piano; Contemporary Musical Arts; Professional Piano Trio Program; Professional String Quartet Program; Artist Diploma Program; Doctor of Musical Arts

### PANDEMIC & SAFETY: SCHOOL POLICIES

[Policies & Procedures for this school](#)

Proof of vaccination required? (✓=Yes ✗=No)

✓ Students ✓ Faculty ✓ Staff

### SOCIAL LINKS



## ROYAL COLLEGE OF MUSIC

The **global top institution** for performing arts\*

A variety of **performance opportunities** with distinguished visiting artists

More than 50% of current students have benefitted from **financial support**

Home to an **international community** with staff and students from all over the world

Located opposite the **Royal Albert Hall** in London

**Find out more about studying at the Royal College of Music at [www.rcm.ac.uk/study](http://www.rcm.ac.uk/study)**

\*QS World University Rankings by Subject 2022

**Royal College of Music, Prince Consort Road, London SW7 2BS, United Kingdom**



## NEW WORLD SYMPHONY, AMERICA'S ORCHESTRAL ACADEMY

### WHAT DISTINGUISHES THIS SCHOOL?

A laboratory for the way music is taught, presented, and experienced, the New World Symphony consists of 87 musicians who are granted fellowships lasting up to three years. The fellowship offers in-depth exposure to traditional & modern repertoire, professional development training and personalized experiences working with leading guest faculty.

**LOCATION** New World Center  
500 17th Street  
Miami Beach, FL 33139  
UNITED STATES  
[www.nws.edu](http://www.nws.edu)

**ADMISSIONS** 305-428-6713  
[admissions@nws.edu](mailto:admissions@nws.edu)

**Audition Requirements** [Audition Requirements](#)

**FINANCIAL INFORMATION**  
[Tuition & Fees](#) / [Financial Aid & Scholarships](#)

**CAREER / POST-GRADUATION ASSISTANCE**  
An intensive four-day audition preparation seminar, involving visiting coaches from major orchestras, is held each year and consists of a series of audition training exercises and private audition coaching, as well as a panel discussion of the audition process from the perspective of the orchestra audition committee. In addition, Fellows organize monthly mock auditions intended to replicate the conditions of professional orchestra auditions, with the occasional participation of guest conductors and coaches. To assist Fellows in achieving optimal

performance in audition and performance settings, NWS presents an annual series of workshops with psychologist Dr. Noa Kageyama. His groundbreaking work with NWS Fellows includes individual training and group exercises.

**KEY STATISTICS** (college level and above)  
**87** music students  
**Music Faculty:** 5 full time, 100 adjunct  
**87** scholarships awarded

**AREAS OF STUDY**  
Arts Leadership • Brass • Composition (Performance) • Conducting • Jazz Studies & Contemporary Media • Music Education • Musicology • Organ • Piano  
*Additional details:* The New World Symphony offers fellowships, instruction and hands-on experience in the above categories. In addition to instrumental fellowships, NWS annually offers a fellowship in the fields of conducting, library, and audio engineering. The New World Symphony is a non-degree granting member of the National Association of Schools of Music.

**ONLINE COURSES**  
[Online courses information](#)  
Additional plans under consideration

**PANDEMIC & SAFETY: SCHOOL POLICIES**  
Proof of vaccination required? (✓=Yes ✗=No)  
✗ Students ✗ Faculty ✗ Staff

**SOCIAL LINKS**   

## NORTHEASTERN UNIVERSITY DEPARTMENT OF MUSIC, COLLEGE OF ARTS, MEDIA & DESIGN

### WHAT DISTINGUISHES THIS SCHOOL?

The Department of Music at Northeastern is devoted to offering graduate and undergraduate majors, combined majors and minors a cross-disciplinary approach to research and practice in music, underscored by real-world experiential learning and cutting-edge technology.

**LOCATION** 351 Ryder Hall  
Northeastern University  
Boston, MA 02115  
UNITED STATES  
[camd.northeastern.edu/music/](http://camd.northeastern.edu/music/)

**ADMISSIONS** 617-373-2200  
[admissions@northeastern.edu](mailto:admissions@northeastern.edu)

**FINANCIAL INFORMATION**  
[Tuition & Fees](#) / [Financial Aid & Scholarships](#)

**CAREER / POST-GRADUATION ASSISTANCE**  
[Career Assistance](#)

**KEY STATISTICS** (college level and above)  
**400** music students  
**Music Faculty:** 19 full time, 10 adjunct

### AREAS OF STUDY

Arts Leadership • Jazz Studies & Contemporary Media • Music Business

### DEGREE PROGRAMS

[Undergraduate Programs](#) / [Graduate Programs](#)  
*Additional details:* Music with Concentration in Music Industry, B.S.; Music with Concentration in Music Technology, B.S.; Music, B.A.; Computer Science and Music with Concentration in Music Technology, B.S.; Electrical Engineering and Music with Concentration in Music Technology, B.S.; Game Design and Music with Concentration in Music Technology, B.S.; Music and Communication Studies with Concentration in Music Industry, B.S.; Music and Psychology, B.S.; Physics and Music with Concentration in Music Technology, B.S.; Arts Administration and Cultural Entrepreneurship, M.S.; Creative Practice Leadership, M.S.; Music Industry Leadership, M.S.; Arts Administration, Graduate Certificate; Cultural Entrepreneurship, Graduate Certificate

### ONLINE COURSES

[Online courses information](#)  
Additional plans under consideration

### PANDEMIC & SAFETY: SCHOOL POLICIES

[Policies & Procedures for this school](#)  
Proof of vaccination required? (✓=Yes ✗=No)  
✓ Students ✓ Faculty ✓ Staff

**SOCIAL LINKS**    



## OBERLIN CONSERVATORY OF MUSIC

### Oberlin College

#### WHAT DISTINGUISHES THIS SCHOOL?

Oberlin Conservatory focuses on undergraduate pre-professional musicians in classical, contemporary, jazz performance; composition; and electronic music. Two graduate programs—Piano Technology and Recording Arts & Production—lead to Artist Diplomas. The conservatory is embedded within the premier liberal arts environment of Oberlin College and is renowned for the Double Degree Program.

**LOCATION** 77 West College Street  
Oberlin, OH 44074  
UNITED STATES  
[www.oberlin.edu/conservatory](http://www.oberlin.edu/conservatory)

#### ADMISSIONS

440-775-8413  
[Conservatory.Admissions@oberlin.edu](mailto:Conservatory.Admissions@oberlin.edu)

#### Audition Requirements [Audition Requirements](#)

Audition requirements vary according to discipline. Visit website for complete information.

#### FINANCIAL INFORMATION

[Tuition & Fees](#) / [Financial Aid & Scholarships](#)

#### CAREER / POST-GRADUATION ASSISTANCE

Oberlin College's [Career Center](#) and Oberlin Conservatory's [Professional Development Office](#) help students and recent alumni identify and achieve meaningful career objectives. Also, two "[Career Communities](#)" connect students, alumni, parents and faculty.

[Joint programs](#) offered in collaboration with the College of Arts & Sciences and the Conservatory include the integrative concentrations in "Arts

Administration and Leadership" and "Pedagogy, Advocacy, and Community Engagement."

#### KEY STATISTICS (college level and above)

**580** music students

**Music Faculty:** 80 full time, 25 adjunct

**580** scholarships awarded

*Scholarship details:* The \$10,000 Oberlin Commitment Scholarship is offered to all enrolling conservatory students. Additional financial aid and merit awards are available.

#### AREAS OF STUDY

Brass • Collaborative Piano • Composition (Performance) • Conducting • Early Music • Guitar • Jazz Studies & Contemporary Media • Media studies (including audio and video production) • Music Education • Musicology • Music Therapy • Organ • Piano • Strings • Vocal Arts/Opera • Winds & Percussion • Piano Technology

#### DEGREE PROGRAMS

[Undergraduate Programs](#) / [Graduate Programs](#)

#### ADDITIONAL PROGRAMS (non-matriculating/prep)

[LaunchU: Oberlin's Competition for Entrepreneurs](#)  
[Summer Programs](#)

#### ONLINE COURSES

[Online courses information](#)

Additional plans under consideration

#### PANDEMIC & SAFETY: SCHOOL POLICIES

[Policies & Procedures for this school](#)

Proof of vaccination required? (✓=Yes ✗=No)

✓ Students ✓ Faculty ✓ Staff

#### SOCIAL LINKS



**STUDY WITH A WORLD-RENOWNED FACULTY • JUNE 12-24, 2023**

**SYMPHONY PERFORMANCES  
MASTERCLASSES  
CHAMBER MUSIC CONCERTS  
RECITALS & WORKSHOPS**

**CONCERTO COMPETITION  
AUDITION TRAINING  
PRIVATE LESSONS  
CAREER COACHING**

**SUBSTANTIAL FULL & PARTIAL SCHOLARSHIPS ARE AVAILABLE**

**LEARN MORE AT [PRISMAFESTIVAL.COM](http://PRISMAFESTIVAL.COM)**

## THE OHIO STATE UNIVERSITY SCHOOL OF MUSIC

### WHAT DISTINGUISHES THIS SCHOOL?

The school recognizes the relationship that binds music to other academic and artistic disciplines and provides students with a comprehensive education, preparing them for professional careers in composition, performance, scholarship and teaching.

**LOCATION** 1866 College Road North  
Columbus, OH 43210  
UNITED STATES  
[music.osu.edu](https://music.osu.edu)

**ADMISSIONS** 614-292-2870  
[sparks.348@osu.edu](mailto:sparks.348@osu.edu)

**Audition Requirements** [Audition Requirements](#)

### FINANCIAL INFORMATION

[Tuition & Fees](#) / [Financial Aid & Scholarships](#)

### CAREER / POST-GRADUATION ASSISTANCE

The Career Counseling and Support Services website lists relevant, on and off campus, career resources to assist all OSU students in their career decision making processes. These career links represent useful suggestions that you may want to consult depending on your career planning needs and career goals.

**KEY STATISTICS** (college level and above)  
**400** music students  
**Music Faculty:** **60** full time, **40** adjunct

### AREAS OF STUDY

Brass • Composition (Performance) • Conducting  
• Jazz Studies & Contemporary Media • Music  
Education • Musicology • Piano • Strings • Vocal Arts/  
Opera • Winds & Percussion

### DEGREE PROGRAMS

[Undergraduate Programs](#) / [Graduate Programs](#)

### PANDEMIC & SAFETY: SCHOOL POLICIES

Proof of vaccination required? (✓=Yes ✗=No)  
✓ Students ✓ Faculty ✓ Staff

**SOCIAL LINKS**    

## PACIFIC REGION INTERNATIONAL SUMMER MUSIC ASSOCIATION FESTIVAL & ACADEMY

### WHAT DISTINGUISHES THIS SCHOOL?

PRISMA prides itself on its focus not only on the technical aspects of music education but on the care it takes to ensure a positive experience—one that brings people together through a shared love of music. It has an exceptionally supportive environment for learning and performing together.

**LOCATION** c/o Robbins & Co.  
#9 - 4313 Alberta Avenue  
Powell River, BC V8A 5G7  
CANADA  
[www.prismafestival.com](https://www.prismafestival.com)

**ADMISSIONS** 855-577-4762  
[admissions@prismafestival.com](mailto:admissions@prismafestival.com)

**Audition Requirements** [Audition Requirements](#)

### FINANCIAL INFORMATION

[Tuition & Fees](#) / [Financial Aid & Scholarships](#)

**CAREER / POST-GRADUATION ASSISTANCE**  
Audition Training

**KEY STATISTICS** (college level and above)  
**80** music students  
**Music Faculty:** **1** full time, **23** adjunct  
**40** scholarships awarded

### AREAS OF STUDY

Brass • Conducting • Organ • Piano • Vocal Arts/  
Opera • Applied Music (Performance)

**PANDEMIC & SAFETY: SCHOOL POLICIES**  
[Policies & Procedures for this school](#)

Proof of vaccination required? (✓=Yes ✗=No)  
✗ Students ✗ Faculty ✗ Staff

**SOCIAL LINKS**    



# PEABODY CONSERVATORY

Johns Hopkins University

## WHAT DISTINGUISHES THIS SCHOOL?

At the Peabody Conservatory, we are a community of artists—cultivating excellence, embracing new ideas, and committed to the future of music in our world.

**LOCATION** 1 East Mount Vernon Place  
Baltimore, MD 21202  
UNITED STATES  
[www.peabody.jhu.edu](http://www.peabody.jhu.edu)

**ADMISSIONS** 667-208-6600  
[peabodyadmissions@jhu.edu](mailto:peabodyadmissions@jhu.edu)

**Audition Requirements** [Audition Requirements](#)

**FINANCIAL INFORMATION**  
[Tuition & Fees](#) / [Financial Aid & Scholarships](#)

**CAREER / POST-GRADUATION ASSISTANCE**  
[LAUNCHPad](#), Peabody's comprehensive career services office, helps students and recent alumni forge successful careers. We provide wide-ranging services in support of students and alumni's goals. We're here to help pinpoint artistic and professional objectives, build career skills, identify opportunities, prepare job applications, launch entrepreneurial ventures, develop web sites, raise funds, organize concert tours, and much more.



**KEY STATISTICS** (college level and above)  
**748** music students  
**Music Faculty:** **75** full time, **100** adjunct  
**580** scholarships awarded

## AREAS OF STUDY

Brass • Composition (Performance) • Conducting  
• Early Music • Guitar • Jazz Studies & Contemporary  
Media • Music Business • Music Education • Music  
Therapy • Organ • Piano • Strings • Vocal Arts/Opera  
• Winds & Percussion • Acoustics • Chamber Music  
• Computer Music • Dance • Music for New Media  
• Pedagogy • Recording Arts and Sciences

## DEGREE PROGRAMS

[B.M.](#); [B.F.A.](#)  
[Graduate Programs](#)

**ADDITIONAL PROGRAMS** (non-matriculating/prep)  
[Low-Residency Master of Music in Composition](#)  
[Low-Residency Master of Music in Computer Music](#)  
[Low-Residency Master of Music in Guitar](#)

## ONLINE COURSES

[Online courses information](#)  
Up to 25% will be available as hybrid or online-only  
courses

## PANDEMIC & SAFETY: SCHOOL POLICIES

[Policies & Procedures for this school](#)  
Proof of vaccination required? (✓=Yes ✗=No)  
✓ Students ✓ Faculty ✓ Staff

**SOCIAL LINKS**    

Refine your  
artistry, create  
opportunities, and  
lead the way in a  
changing world.

At the Peabody Conservatory,  
you'll study with renowned  
faculty and forge a performing  
arts career as unique as you are.



[peabody.jhu.edu](http://peabody.jhu.edu)  
667-208-6600



## PECK SCHOOL OF THE ARTS

University of Wisconsin-Milwaukee

### WHAT DISTINGUISHES THIS SCHOOL?

Music at UW-Milwaukee offers comprehensive undergraduate and graduate education, and is the largest professional degree granting music department in the UW System. Our renowned artist faculty and alumni perform with the Milwaukee Symphony Orchestra, the Lyric Opera of Chicago, the Florentine Opera, Present Music, and more.

**LOCATION** UWM Department of Music  
PO Box 413  
Milwaukee WI 53201  
UNITED STATES  
[uwm.edu/arts](http://uwm.edu/arts)

**ADMISSIONS** 414-229-4763  
[music-info@uwm.edu](mailto:music-info@uwm.edu)

### FINANCIAL INFORMATION

[Tuition & Fees](#)

### CAREER / POST-GRADUATION ASSISTANCE

UW-Milwaukee offers a comprehensive [Career Planning and Resource Center](#)

### KEY STATISTICS (college level and above)

**300** music students

**Music Faculty:** **15** full time, **30** adjunct

### AREAS OF STUDY

Brass • Collaborative Piano • Composition (Performance) • Conducting • Guitar • Media studies (including audio and video production) • Music Education • Musicology • Music Therapy • Organ • Piano • Strings

### DEGREE PROGRAMS

[Undergraduate Programs](#) / [Graduate Programs](#)

*Additional details:* Master of Music/Master of Library and Information Sciences (integrated degree)

### ONLINE COURSES

[Online courses information](#)

Up to 25% will be available as hybrid or online-only courses

### PANDEMIC & SAFETY: SCHOOL POLICIES

[Policies & Procedures for this school](#)

Proof of vaccination required? (✓=Yes ✗=No)

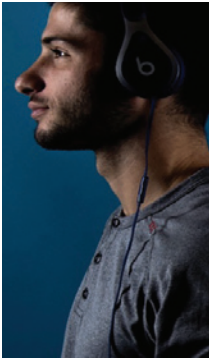
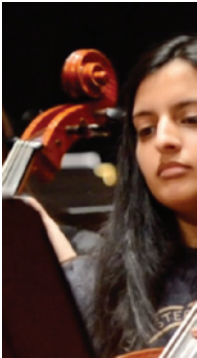
✗ Students ✗ Faculty ✗ Staff

### SOCIAL LINKS



## Northeastern University

**Music at Northeastern University:**  
**for students destined to become change agents**  
**and thought leaders in industry, culture, and society**



### Undergraduate Programs:

- B.A. in Music
- B.S. in Music Industry
- B.S. in Music Technology
- Combined majors in Music and Computer Information Science, Physics, Engineering, Game Design, Psychology, and Communication Studies
- Ten minors in music-specific disciplines

### Co-op and Dialogues of Civilization:

The Co-op program sets Northeastern apart from other institutions and leverages NU's excellence in experiential learning. Co-ops and Dialogues of Civilization provide direct, real-world engagement with industry, creative culture and practice across the globe, partnering with over 100 companies and organizations—recording labels, music publishing companies, media outlets, cultural centers and performing arts organizations. For more information visit:

<https://www.northeastern.edu/admissions/application-information/apply>

**Daniel Strong Godfrey**  
Professor and Chair  
Department of Music  
College of Arts, Media and Design  
351 Ryder Hall  
Northeastern University  
Boston, MA 02115  
[d.godfrey@northeastern.edu](mailto:d.godfrey@northeastern.edu)





## ROYAL COLLEGE OF MUSIC

### WHAT DISTINGUISHES THIS SCHOOL?

The Royal College of Music is one of the world's greatest conservatoires. Ranked the top global institution for performing arts in the QS World University Rankings by Subject 2022. We have nurtured exceptional musical talent for more than 140 years and welcome students from all over the world.

**LOCATION** Royal College of Music  
Prince Consort Road  
London SW7 2BS  
UNITED KINGDOM  
[www.rcm.ac.uk](http://www.rcm.ac.uk)

**ADMISSIONS** +44 (0)20 7591 4300  
[admissions@rcm.ac.uk](mailto:admissions@rcm.ac.uk)

**Audition Requirements** [Audition Requirements](#)  
Audition requirements are set by each faculty. See website for further information.

**FINANCIAL INFORMATION**  
[Tuition & Fees](#) / [Financial Aid & Scholarships](#)

### CAREER / POST-GRADUATION ASSISTANCE

The RCM is a world leader in career development for musicians. Our dedicated [Creative Careers Centre](#) will guide you through a range of opportunities that mirror the professional world. You can use these services from day one of your course to develop an outstanding CV and wealth of experience which will help shape your future career, and the Creative Careers Centre provides advice and services to RCM alumni for five years after graduation.

**KEY STATISTICS** (college level and above)  
**950** music students  
**Music Faculty:** **45** full time, **300** adjunct

### AREAS OF STUDY

Brass • Collaborative Piano • Composition (Performance) • Conducting • Early Music • Guitar • Music Education • Music Therapy • Organ • Piano • Strings • Vocal Arts/Opera • Winds & Percussion • Composition for Screen

**DEGREE PROGRAMS**  
[Undergraduate Programs](#) / [Graduate Programs](#)

### PANDEMIC & SAFETY: SCHOOL POLICIES

[Policies & Procedures for this school](#)

Proof of vaccination required? (✓=Yes ✗=No)

✗ Students ✗ Faculty ✗ Staff

### SOCIAL LINKS



## SAN FRANCISCO CONSERVATORY OF MUSIC

### WHAT DISTINGUISHES THIS SCHOOL?

With its new Bowes Center, alliances with Opus 3 Artists and Pentatone Music, star faculty, and partnerships with Bay Area performing arts institutions and tech companies, SFCM provides students with unparalleled opportunities to develop themselves, their music, and their careers in the heart of the city.

**LOCATION** 50 Oak Street  
San Francisco, CA 94102  
UNITED STATES  
[sfcml.edu/](http://sfcml.edu/)

**ADMISSIONS** 800-899-SFCM  
[apply@sfcml.edu](mailto:apply@sfcml.edu)

**Audition Requirements** [Audition Requirements](#)

**FINANCIAL INFORMATION**  
[Tuition & Fees](#) / [Financial Aid & Scholarships](#)

**CAREER / POST-GRADUATION ASSISTANCE**  
[The Professional Development and Engagement Center](#) (PDEC) offers students gig opportunities, internships, a grant service, access to employment listings, and a host of courses focused on marketing, finance, teaching, and technology.

### KEY STATISTICS (college level and above)

**450** music students  
**Music Faculty:** **21** full time, **48** adjunct  
*Scholarship details:* 100% of full-time students receive aid; the average scholarship covers 57% of tuition

### AREAS OF STUDY

Brass • Collaborative Piano • Composition (Performance) • Conducting • Early Music • Guitar • Jazz Studies & Contemporary Media • Media studies (including audio and video production) • Music Business • Musicology • Music Therapy • Organ • Piano • Strings • Vocal Arts/Opera • Winds & Percussion • Chamber Music • Technology and Applied Composition

**DEGREE PROGRAMS**  
[Undergraduate Programs](#) / [Graduate Programs](#)

**ADDITIONAL PROGRAMS** (non-matriculating/prep)  
[Rubin Institute for Music Criticism](#)  
[Center for Innovative Leadership](#)  
[SFCM Pre-College Division for Under 18](#)

**ONLINE COURSES**  
[Online courses information](#)  
Additional plans under consideration

### PANDEMIC & SAFETY: SCHOOL POLICIES

[Policies & Procedures for this school](#)

Proof of vaccination required? (✓=Yes ✗=No)

✓ Students ✓ Faculty ✓ Staff

**SOCIAL LINKS**

## SHENANDOAH CONSERVATORY

Shenandoah University

### WHAT DISTINGUISHES THIS SCHOOL?

Shenandoah Conservatory offers rigorous professional training in Music, Theatre, and Dance, with extensive performance opportunities, collaborative and interdisciplinary experiences, and close mentoring relationships with exceptionally accomplished faculty. Engagements with internationally acclaimed guest artists representing the highest levels of creative, pedagogical, and scholarly excellence are frequent, and international performance opportunities abound.

**LOCATION** 1460 University Drive  
Winchester, VA 22601  
UNITED STATES  
[www.su.edu/conservatory](http://www.su.edu/conservatory)

**ADMISSIONS** 540-665-4581  
[admit@su.edu](mailto:admit@su.edu)

**Audition Requirements** [Audition Requirements](#)

**FINANCIAL INFORMATION**  
[Tuition & Fees](#) / [Financial Aid & Scholarships](#)

**CAREER / POST-GRADUATION ASSISTANCE**  
Shenandoah University's [Career Services Office](#) provides a comprehensive range of services and resources to support career exploration and professional growth of SU students. Career Services works with students in all aspects of the career development process, from choosing a major to career changes. Services offered include career exploration; experiential learning through internships, volunteer, summer and part-time opportunities; as well as résumé building, interview skills workshops, graduate school search assistance, and job search assistance.

### KEY STATISTICS (college level and above)

**380** music students

**Music Faculty:** **41** full time, **32** adjunct

### AREAS OF STUDY

Arts Leadership • Brass • Collaborative Piano  
• Composition (Performance) • Conducting • Guitar  
• Jazz Studies & Contemporary Media • Media studies (including audio and video production)  
• Music Business • Music Education • Musicology  
• Music Therapy • Piano • Strings • Vocal Arts/Opera  
• Winds & Percussion • Contemporary Musicianship & Entrepreneur Development • Vocal Pedagogy—Classical and Contemporary Commercial Music  
• Dance • Acting • Musical Theatre • Musical Theatre Accompanying • Theatre Design & Production

### DEGREE PROGRAMS

[Undergraduate Programs](#) / [Graduate Programs](#)

### ADDITIONAL PROGRAMS (non-matriculating/prep)

[Ensembles](#)  
[ShenCoLAB, Festival of Arts, Ideas and Exploration](#)  
[Global Citizenship Project](#)

### ONLINE COURSES

[Online courses information](#)  
Up to 25% will be available as hybrid or online-only courses

### PANDEMIC & SAFETY: SCHOOL POLICIES

[Policies & Procedures for this school](#)  
Proof of vaccination required? (✓=Yes ✗=No)  
✗ Students ✗ Faculty ✗ Staff

### SOCIAL LINKS



# CHAPMAN UNIVERSITY:

Come here for **world-class training**  
in **state-of-the-art facilities**.

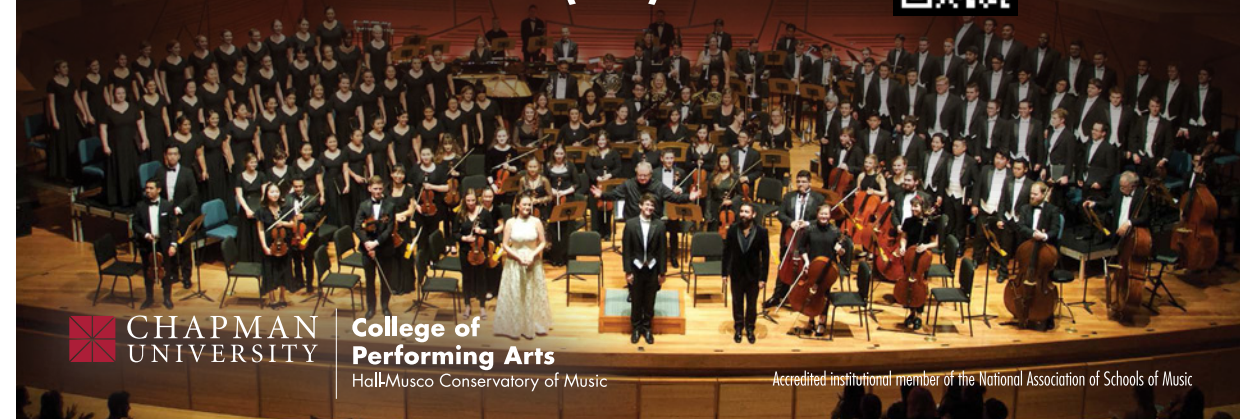
Come here to **hone your craft**  
and turn your **passion** into **profession**.

- *Specialists in undergraduate education for musicians*
- *Internationally renowned faculty who know your name*
- *Exceptional performance opportunities*

Talent awards, academic scholarships, and financial aid assistance available.

## APPLY AND AUDITION!

**CHAPMAN.EDU/MUSIC**  
**OR CALL (714) 516-5223**



**CHAPMAN**  
UNIVERSITY

**College of**  
**Performing Arts**

Hall-Musco Conservatory of Music

Accredited institutional member of the National Association of Schools of Music



## THE SHEPHERD SCHOOL OF MUSIC

### Rice University

#### WHAT DISTINGUISHES THIS SCHOOL?

The Shepherd School of Music provides a dedicated faculty of artist-teachers, extraordinary performance opportunities, beautiful facilities, and an unparalleled education at one of America's premiere universities.

**LOCATION** 6100 Main Street, Entrance 18  
Houston, TX 77005  
UNITED STATES  
[www.music.rice.edu](http://www.music.rice.edu)

**ADMISSIONS** 713-348-4854  
[musi@rice.edu](mailto:musi@rice.edu)

#### Audition Requirements

[Undergraduate audition requirements](#)  
[Graduate audition requirements](#)

#### FINANCIAL INFORMATION

[Tuition & Fees](#) / [Financial Aid & Scholarships](#)

#### CAREER / POST-GRADUATION ASSISTANCE

To ensure that our students are fully prepared to meet the demands of the profession, we have created an instructional area entitled Music Career and Skills Enhancement. Specific courses are designed to complement the Shepherd School's superb musical and academic training to help students transition to professional life. Additionally, Rice University's Center for Career Development supports alumni through career counseling and access to career resources.

**KEY STATISTICS** (college level and above)  
**255** music students  
**Music Faculty:** **48** full time, **0** adjunct

#### AREAS OF STUDY

Brass • Collaborative Piano • Composition  
(Performance) • Conducting • Musicology • Organ  
• Piano • Strings • Vocal Arts/Opera • Winds & Percussion

#### DEGREE PROGRAMS

[Undergraduate Programs](#) / [Graduate Programs](#)

#### PANDEMIC & SAFETY: SCHOOL POLICIES

[Policies & Procedures for this school](#)

Proof of vaccination required? (✓=Yes ✗=No)  
✗ Students ✓ Faculty ✓ Staff

#### SOCIAL LINKS



## THE TIANJIN JUILLIARD SCHOOL

### The Juilliard School

#### WHAT DISTINGUISHES THIS SCHOOL?

The Tianjin Juilliard School uniquely focuses on collaborative musicianship, emphasizing a commitment to ensemble playing of the highest artistic level. Our programs reflect the best of educational standards, preparing students for a lifetime of creative expression, of engagement and growth as an individual and as a musician.

**LOCATION** The Tianjin Juilliard School  
2946 Xinhua Road  
Binhai New Area  
Tianjin 300450  
CHINA  
[www.tianjinjuilliard.edu.cn](http://www.tianjinjuilliard.edu.cn)

**ADMISSIONS** 212-299-5000 x7642  
[admissions@tianjinjuilliard.edu.cn](mailto:admissions@tianjinjuilliard.edu.cn)

**Audition Requirements** [Audition Requirements](#)

#### FINANCIAL INFORMATION

[Tuition & Fees](#) / [Financial Aid & Scholarships](#)

**KEY STATISTICS** (college level and above)

**70** music students

**Music Faculty:** **24** full time, **0** adjunct

*Scholarship details:* \$48,500 USD; 95% of students receive financial aid in the form of institutional scholarships.

#### AREAS OF STUDY

Brass • Collaborative Piano • Piano • Strings • Winds & Percussion

#### DEGREE PROGRAMS

[Graduate Programs](#)

*Additional details:* M.M. Degree in Orchestral Studies, Chamber Music, and Collaborative Piano

**ADDITIONAL PROGRAMS** (non-matriculating/prep)  
[Pre-College](#)

#### PANDEMIC & SAFETY: SCHOOL POLICIES

[Policies & Procedures for this school](#)

Proof of vaccination required? (✓=Yes ✗=No)  
✗ Students ✗ Faculty ✗ Staff

#### SOCIAL LINKS



# TRINITY LABAN CONSERVATOIRE OF MUSIC AND DANCE

Trinity Laban is London's Creative Conservatoire: an internationally celebrated center of excellence, offering world-class training in dance, music, and musical theater. Trinity Laban identifies, supports and develops a diverse intake of talented performers and creators, wherever they may be found and throughout their creative lives. The supportive atmosphere, global community, outstanding landmark buildings, and innovative curriculum at Trinity Laban instill technical excellence and enable creativity to flourish, transforming those with potential into resourceful, enterprising, and adaptable artistic leaders. Trinity Laban also provides exciting opportunities for the public to encounter dance and music, and to access arts health programs.

## WHAT DISTINGUISHES THIS SCHOOL?

Trinity Laban is London's Creative Conservatoire: an internationally celebrated center of excellence, offering world-class training in dance, music and musical theater, transforming those with potential into resourceful, enterprising and adaptable artistic leaders.

**LOCATION** King Charles Court  
Old Royal Naval College  
London SE10 9JF  
UNITED KINGDOM  
[www.trinitylaban.ac.uk](http://www.trinitylaban.ac.uk)

**ADMISSIONS** +44 (0)20 8305 4444  
[admissions@trinitylaban.ac.uk](mailto:admissions@trinitylaban.ac.uk)

**Audition Requirements** [Audition Requirements](#)

# TRINITY LABAN CONSERVATOIRE OF MUSIC & DANCE

## FINANCIAL INFORMATION

[Tuition & Fees](#) / [Financial Aid & Scholarships](#)

## CAREER / POST-GRADUATION ASSISTANCE

[Career Assistance](#)

## KEY STATISTICS (college level and above)

**550** music students

**Music Faculty:** 17 full time, 231 adjunct

**200** scholarships awarded

*Scholarship details:* \$5,400 to \$6,000

## AREAS OF STUDY

Brass • Collaborative Piano • Composition (Performance) • Guitar • Jazz Studies & Contemporary Media • Music Education • Piano • Strings • Vocal Arts/Opera • Winds & Percussion • Musical Theatre • Popular Music - Music Performance and Industry • Contemporary Dance • Ensemble Artistry • Performer-Composer

## DEGREE PROGRAMS

[Undergraduate Programs](#) / [Graduate Programs](#)

## ADDITIONAL PROGRAMS (non-matriculating/prep)

[Musical Theatre](#)

[B.A. \(Hons\) Music Performance and Industry](#)

## ONLINE COURSES

[Online courses information](#)

Up to 25% will be available as hybrid or online-only courses

## PANDEMIC & SAFETY: SCHOOL POLICIES

[Policies & Procedures for this school](#)

Proof of vaccination required? (✓=Yes ✗=No)

✗ Students ✗ Faculty ✗ Staff

## SOCIAL LINKS



## Dance / Music / Musical Theatre

Undergraduate, graduate  
and diploma programs

# TRINITY LABAN

London's creative  
conservatory

Choose world-class  
teaching, artistic  
experimentation and  
creative collaboration.  
Join our global  
community in London.

Apply now for 2023 entry  
[trinitylaban.ac.uk](http://trinitylaban.ac.uk)



# #chooseTL

Photo: James Keates



## UC BERKELEY DEPARTMENT OF MUSIC

University of California, Berkeley

### WHAT DISTINGUISHES THIS SCHOOL?

We successfully integrate academic studies with performance.

**LOCATION** 104 Morrison Hall  
Berkeley, CA 94720-1200  
UNITED STATES  
[music.berkeley.edu](https://music.berkeley.edu)

**ADMISSIONS** 510-642-2678  
[musicadvising@berkeley.edu](mailto:musicadvising@berkeley.edu)

### Audition Requirements

No audition is required for admission to UC Berkeley. Auditions are held for Music Department ensembles and private lessons at the start of each semester at UC Berkeley.

### FINANCIAL INFORMATION

[Tuition & Fees](#)

### CAREER / POST-GRADUATION ASSISTANCE

[Career Assistance](#)

### KEY STATISTICS (college level and above)

**220** music students

**Music Faculty:** 18 full time, 22 adjunct

### AREAS OF STUDY

Brass • Collaborative Piano • Composition (Performance) • Conducting • Early Music • Jazz Studies & Contemporary Media • Media studies (including audio and video production) • Music Business • Music Education • Musicology • Music Therapy • Organ • Piano • Strings • Vocal Arts/Opera • Winds & Percussion

### DEGREE PROGRAMS

[Undergraduate Programs](#) / [Graduate Programs](#)

### PANDEMIC & SAFETY: SCHOOL POLICIES

[Policies & Procedures for this school](#)

Proof of vaccination required? (✓=Yes ✗=No)

✓ Students ✓ Faculty ✓ Staff

### SOCIAL LINKS



## UCLA HERB ALPERT SCHOOL OF MUSIC

University of California, Los Angeles

### WHAT DISTINGUISHES THIS SCHOOL?

The UCLA Herb Alpert School of Music is at the nexus of performance, scholarship, and innovation. Offering programs in Ethnomusicology, Music, Musicology, Music Industry and Global Jazz Studies, we balance cutting-edge scholarship with performance mastery and composition. Students are encouraged to explore music in all its contemporary and historical diversity.

**LOCATION** 445 Charles E. Young Drive East  
2520 Schoenberg Music Building  
Los Angeles, CA 90095  
UNITED STATES  
[www.schoolofmusic.ucla.edu/](http://www.schoolofmusic.ucla.edu/)

**ADMISSIONS** 310-825-6457  
[admissions@schoolofmusic.ucla.edu](mailto:admissions@schoolofmusic.ucla.edu)

### Audition Requirements

[Undergraduate audition requirements](#)

[Graduate audition requirements](#)

### FINANCIAL INFORMATION

[Tuition & Fees](#) / [Financial Aid & Scholarships](#)

### CAREER / POST-GRADUATION ASSISTANCE

The [UCLA Career Center](#) is one of the largest and most comprehensive career centers in the nation. It offers a wide range of services that help students explore their professional interests; provide them with the knowledge, skills, resources, and experience necessary to pursue professional goals with confidence and self-assurance; and facilitate connections with employers, alumni, and graduate school representatives. The Career Center, in

collaboration with the School of Music faculty and staff, meets the unique needs of our students by providing programs and counseling services specific to careers in the arts.

### KEY STATISTICS (college level and above)

**590** music students

**Music Faculty:** 45 full time, 24 adjunct

**275** scholarships awarded

### AREAS OF STUDY

Brass • Collaborative Piano • Composition (Performance) • Conducting • Early Music • Guitar • Jazz Studies & Contemporary Media • Media studies (including audio and video production) • Music Business • Music Education • Musicology • Music Therapy • Organ • Piano • Strings • Vocal Arts/Opera • Winds & Percussion • Ethnomusicology • Music History & Industry

### DEGREE PROGRAMS

[Undergraduate Programs](#) / [Graduate Programs](#)

### ONLINE COURSES

[Online courses information](#)

26% to 50% will be available as hybrid or online-only courses

### PANDEMIC & SAFETY: SCHOOL POLICIES

[Policies & Procedures for this school](#)

Proof of vaccination required? (✓=Yes ✗=No)

✓ Students ✓ Faculty ✓ Staff

### SOCIAL LINKS



# UNIVERSITY OF CINCINNATI COLLEGE- CONSERVATORY OF MUSIC

Nationally ranked and internationally renowned, the University of Cincinnati College-Conservatory of Music (CCM) is a preeminent institution for the performing and media arts.

## WHAT DISTINGUISHES THIS SCHOOL?

CCM provides life-changing experiences within a highly creative and multidisciplinary artistic environment. Declared one of this country's leading conservatories by *The New York Times*, CCM offers nine degree types (B.A., B.M., B.F.A., M.F.A., M.M., M.A., A.D., D.M.A., Ph.D) in more than 100 possible majors.

**LOCATION** University of Cincinnati  
College-Conservatory of Music  
PO Box 210003  
- or - 290 CCM Blvd  
Cincinnati, OH 45221-0003  
UNITED STATES  
[ccm.uc.edu](http://ccm.uc.edu)

**ADMISSIONS** 513-556-9479  
[ccmadmis@uc.edu](mailto:ccmadmis@uc.edu)

**Audition Requirements** [Audition Requirements](#)  
Auditions and interviews will be held in January and February.

**FINANCIAL INFORMATION**  
[Tuition & Fees](#) / [Financial Aid & Scholarships](#)

**CAREER / POST-GRADUATION ASSISTANCE**  
Professional development and entrepreneurial acumen are an important part of the CCM



experience. Faculty mentorship along with the Managing Professional Performance Careers course provide a foundation.

CCM is also home to the Bravos Without Barriers Diversity Fellowship Program, hosted in partnership with the Cincinnati Symphony Orchestra.

**KEY STATISTICS** (college level and above)  
**968** music students  
**Music Faculty:** 77 full time, 54 adjunct  
**872** scholarships awarded

## AREAS OF STUDY

Arts Leadership • Brass • Collaborative Piano  
• Composition (Performance) • Conducting • Guitar  
• Jazz Studies & Contemporary Media • Media studies  
(including audio and video production) • Music  
Business • Music Education • Musicology • Organ  
• Piano • Strings • Vocal Arts/Opera • Winds & Percussion  
• Acting • Arts Administration • Ballet • Commercial  
Music Production • Media Production • Music History  
• Musical Theatre • Theatre Design and Production

## DEGREE PROGRAMS

[Undergraduate Programs](#) / [Graduate Programs](#)

**ADDITIONAL PROGRAMS** (non-matriculating/prep)  
[Summer at CCM](#) / [Prep Programs](#)

## ONLINE COURSES

[Online courses information](#)  
Up to 25% will be available as hybrid or online-only courses

## PANDEMIC & SAFETY: SCHOOL POLICIES

[Policies & Procedures for this school](#)  
Proof of vaccination required? (✓=Yes ✗=No)  
✗ Students ✗ Faculty ✗ Staff

**SOCIAL LINKS** [Twitter](#) [Facebook](#) [YouTube](#) [Instagram](#) [LinkedIn](#)

CCM students Jordan Curry and Magdiell Antequera perform with the Cincinnati Symphony Orchestra. The CSO/CCM Diversity Fellowship and Opera Fusion: New Works are made possible by generous support from The Andrew W. Mellon Foundation.

# WELCOME TO YOUR NEXT STAGE.

Tomorrow's arts leaders and luminaries get their start at UC's nationally ranked and internationally renowned College-Conservatory of Music.

Whether it's paid performance opportunities with the Cincinnati Symphony Orchestra as part of the **CSO/CCM Diversity Fellowship Program** or a chance to work with some of the world's leading composers and librettists through the **Opera Fusion: New Works Program** with Cincinnati Opera, CCM provides life-changing experiences for tomorrow's performing and media arts professionals.

Internationally acclaimed faculty, classrooms without boundaries and unlimited opportunity. Your future is calling. Take your next step at [ccm.uc.edu](http://ccm.uc.edu).

[#NextLivesHere](#)

University of  
CINCINNATI | CCM



## UNIVERSITY OF FLORIDA SCHOOL OF MUSIC

### WHAT DISTINGUISHES THIS SCHOOL?

The student body of the UF School of Music is an exceptional group of regional, national, and international artists and scholars. UF's extraordinary academic reputation, highly accomplished faculty, rigor of professional training, and notable success of our alumni attracts many of the best and brightest students each year.

**LOCATION** 435 Newell Drive  
Gainesville, FL 32611  
UNITED STATES  
[arts.ufl.edu/academics/music/](https://arts.ufl.edu/academics/music/)

**ADMISSIONS** 352-392-0224  
[music@arts.ufl.edu](mailto:music@arts.ufl.edu)

**Audition Requirements** [Audition Requirements](#)

**FINANCIAL INFORMATION**  
[Tuition & Fees](#)

**CAREER / POST-GRADUATION ASSISTANCE**  
[The University of Florida Career Connections Center](#) offers a variety of services, including one-on-one career advice, résumé help and templates for building a career action plan. Students gain access to our GaterLink platform, where they can schedule meetings with a career planner, look at upcoming workshops and other events, and connect with resources to push their careers to the next level.

**KEY STATISTICS** (college level and above)

**440** music students

**Music Faculty:** **41** full time, **5** adjunct

### AREAS OF STUDY

Brass • Composition (Performance) • Conducting  
• Guitar • Music Education • Musicology • Organ  
• Piano • Strings • Vocal Arts/Opera • Winds & Percussion

### DEGREE PROGRAMS

[Undergraduate Programs](#) / [Graduate Programs](#)

### ONLINE COURSES

[Online courses information](#)

26% to 50% will be available as hybrid or online-only courses

### PANDEMIC & SAFETY: SCHOOL POLICIES

[Policies & Procedures for this school](#)

Proof of vaccination required? (✓=Yes ✗=No)

✗ Students ✗ Faculty ✗ Staff

**SOCIAL LINKS** 

## UNIVERSITY OF ILLINOIS SCHOOL OF MUSIC

University of Illinois at Urbana-Champaign

### WHAT DISTINGUISHES THIS SCHOOL?

The University of Illinois School of Music has beautiful facilities including the Krannert Center for the Performing Arts; inclusive community with supportive faculty; individual attention for students; a diverse Big 10 campus with wide-ranging performance and research opportunities.

**LOCATION** 1114 West Nevada Street  
Urbana, IL 61801  
UNITED STATES  
[music.illinois.edu/](https://music.illinois.edu/)

**ADMISSIONS** 217-244-7899  
[musicadmissions@illinois.edu](mailto:musicadmissions@illinois.edu)

**Audition Requirements** [Audition Requirements](#)

**FINANCIAL INFORMATION**  
[Tuition & Fees](#) / [Financial Aid & Scholarships](#)

### CAREER / POST-GRADUATION ASSISTANCE

The School of Music and the College of Fine + Applied Arts are dedicated to preparing our students for successful careers in their fields. [The Career Services Office](#) offers workshops, job fairs, hands-on sessions, and individual appointments for professional feedback, individualized career planning sessions. Additionally, we offer courses in cover-letter and résumé writing. The Career Services' Mentoring Program helps juniors, seniors, and grad students establish connections and explore career paths through informational online conversations, interviews, and job shadowing.

The School of Music hosts a number of entrepreneurship events each year to help students develop important business and marketing skills.

**KEY STATISTICS** (college level and above)

**725** music students

**Music Faculty:** **90** full time, **0** adjunct

### AREAS OF STUDY

Brass • Collaborative Piano • Composition (Performance) • Conducting • Guitar • Jazz Studies & Contemporary Media • Media studies (including audio and video production) • Music Business • Music Education • Music Therapy • Organ • Piano • Strings • Vocal Arts/Opera • Choral Conducting • Computer Science + Music • Instrumental Performer • Music Technology • Open Studies • Orchestral Conducting • Piano Pedagogy • Vocal Coaching and Accompanying • Vocal Performance • Wind Band Conducting

### DEGREE PROGRAMS

[Undergraduate Programs](#) / [Graduate Programs](#)

**ADDITIONAL PROGRAMS** (non-matriculating/prep)  
[Illinois Summer Youth Music](#)

### ONLINE COURSES

[Online courses information](#)

Up to 25% will be available as hybrid or online-only courses

### PANDEMIC & SAFETY: SCHOOL POLICIES

[Policies & Procedures for this school](#)

Proof of vaccination required? (✓=Yes ✗=No)

✓ Students ✓ Faculty ✓ Staff

**SOCIAL LINKS**    



## Learn

from a dedicated  
residential faculty

## Belong

to a fiercely  
supportive community

## Discover

your own path

Scan here to take a virtual tour of campus

**CELEBRATING 100 YEARS**

For application information visit [esm.rochester.edu/admissions](https://esm.rochester.edu/admissions)

UNIVERSITY OF ROCHESTER

Eastman  
School of Music

100 YEARS | 1921-2021

## UNIVERSITY OF MASSACHUSETTS AMHERST DEPARTMENT OF MUSIC & DANCE

### WHAT DISTINGUISHES THIS SCHOOL?

UMass Amherst offers conservatory quality education in a university setting. Intensive yet supportive, the music program has a variety of concentrations as well as nationally and internationally renowned faculty dedicated to educating students. A top research university, UMass also enables other majors to be involved musically.

### LOCATION

273 Bromery Center  
for the Arts East  
University of Massachusetts  
Amherst, MA 01003  
UNITED STATES  
[www.umass.edu/music](http://www.umass.edu/music)

### ADMISSIONS

413-545-6048  
[musicadmissions@umass.edu](mailto:musicadmissions@umass.edu)

### Audition Requirements

[Undergraduate audition requirements by instrument](#)

[Graduate audition requirements by instrument](#)

Prospective undergraduates must submit the Common App before signing up for an audition. Early Action is recommended. To sign up for an audition, students must submit an online [Music Application](#).

### FINANCIAL INFORMATION

[Tuition & Fees](#) / [Financial Aid & Scholarships](#)

### CAREER / POST-GRADUATION ASSISTANCE

[Career Services](#)

[Lisa Blacher](#), assistant director of Career Development Services (HFA)  
413-545-6152

**KEY STATISTICS** (college level and above)

**250** music students

**Music Faculty:** **40** full time, **2** adjunct

### AREAS OF STUDY

Brass • Collaborative Piano • Composition (Performance) • Conducting • Guitar • Jazz Studies & Contemporary Media • Music Education • Piano • Strings • Vocal Arts/Opera • Winds & Percussion • Music History

### DEGREE PROGRAMS

[Undergraduate Programs](#) / [Graduate Programs](#)

**ADDITIONAL PROGRAMS** (non-matriculating/prep)

[The Arts Management Certificate for Campus Undergraduates](#)

### PANDEMIC & SAFETY: SCHOOL POLICIES

[Policies & Procedures for this school](#)

Proof of vaccination required? (✓=Yes ✗=No)

✓ Students ✓ Faculty ✓ Staff

### SOCIAL LINKS





## UNIVERSITY OF MASSACHUSETTS LOWELL DEPARTMENT OF MUSIC

### WHAT DISTINGUISHES THIS SCHOOL?

We offer Bachelor of Music majors in Sound Recording Technology, Music Business, Music Education, Music Performance, and Composition for New Media.

**LOCATION** Durgin Hall  
35 Wilder Street  
Lowell, MA 01854  
UNITED STATES  
[www.uml.edu/FAHSS/Music/](http://www.uml.edu/FAHSS/Music/)

**ADMISSIONS** 978-934-3931  
[admissions@uml.edu](mailto:admissions@uml.edu)

**Audition Requirements** [Audition Requirements](#)

### FINANCIAL INFORMATION

[Tuition & Fees](#) / [Financial Aid & Scholarships](#)

### CAREER / POST-GRADUATION ASSISTANCE

Internships in Music Business and Sound Recording Technology help provide job experience and placement.

**KEY STATISTICS** (college level and above)  
**400** music students  
**Music Faculty:** **16** full time, **45** adjunct

### AREAS OF STUDY

Composition (Performance) • Jazz Studies & Contemporary Media • Media Studies (including audio and video production) • Music Business • Music Education • Composition for New Media • Music Performance (all instruments and voice)

### DEGREE PROGRAMS

[Undergraduate Programs](#) / [Graduate Programs](#)

### PANDEMIC & SAFETY: SCHOOL POLICIES

[Policies & Procedures for this school](#)

Proof of vaccination required? (✓=Yes ✗=No)

✓ Students ✓ Faculty ✓ Staff

### SOCIAL LINKS



## UNIVERSITY OF MICHIGAN SCHOOL OF MUSIC, THEATRE & DANCE

### WHAT DISTINGUISHES THIS SCHOOL?

The School's unique relationship as a part of the U-M, ranked as one the top universities in the U.S., provides students with a vast array of options and opportunities. All of our degrees require some academic coursework, most of which can be selected from any area of the University.

**LOCATION** 1100 Baits Drive, 2290 Moore  
Ann Arbor, MI 48109  
UNITED STATES  
[smt.d.umich.edu](http://smt.d.umich.edu)

**ADMISSIONS** 734-764-0593  
[smt.d.admissions@umich.edu](mailto:smt.d.admissions@umich.edu)

**Audition Requirements** [Audition Requirements](#)

### FINANCIAL INFORMATION

[Tuition & Fees](#) / [Financial Aid & Scholarships](#)

### CAREER / POST-GRADUATION ASSISTANCE

The School of Music, Theatre & Dance EXCEL Program provides entrepreneurship training and career services for all U-M students engaged in the performing arts. Our goal is to enable all our students to forge a viable career in the performing arts by exploring, developing, and leveraging their talents, training, skills, and ambitions. Excellence in Entrepreneurship, Career Empowerment & Leadership (EXCEL) catalyzes success for U-M SMTD students and alumni through courses, co-curricular workshops, ongoing mentoring, and \$100,000 in student project and venture funding.

### KEY STATISTICS (college level and above)

**1150** music students  
**Music Faculty:** **150** full time, **75** adjunct

### AREAS OF STUDY

Arts Leadership • Brass • Collaborative Piano • Composition (Performance) • Conducting • Early Music • Guitar • Jazz Studies & Contemporary Media • Media studies (including audio and video production) • Music Business • Music Education • Musicology • Music Therapy • Organ • Piano • Strings • Vocal Arts/Opera • Winds & Percussion • Performing Arts Technology • Dance • Musical Theatre • Theatre

### DEGREE PROGRAMS

[Undergraduate Programs](#) / [Graduate Programs](#)

### ADDITIONAL PROGRAMS (non-matriculating/prep)

[Engagement & Outreach](#)

### PANDEMIC & SAFETY: SCHOOL POLICIES

[Policies & Procedures for this school](#)

Proof of vaccination required? (✓=Yes ✗=No)

✓ Students ✓ Faculty ✓ Staff

### SOCIAL LINKS



# UNIVERSITY OF NORTH CAROLINA SCHOOL OF THE ARTS SCHOOL OF MUSIC

## WHAT DISTINGUISHES THIS SCHOOL?

UNCSA School of Music offers a transformative conservatory experience that prepares students for professional careers.

**LOCATION** 1533 South Main Street  
Winston-Salem, NC 27127  
UNITED STATES  
[www.uncsa.edu](http://www.uncsa.edu)

**ADMISSIONS** 336-770-3290  
[admissions@uncsa.edu](mailto:admissions@uncsa.edu)

## Audition Requirements

The University of North Carolina School of the Arts School of Music provides high school, undergraduate, and graduate programs in a variety of instruments. In addition to their online application, students will need to audition for the music faculty.

[Undergraduate](#)

[Graduate](#)

[High School](#)

## FINANCIAL INFORMATION

[Tuition & Fees](#) / [Financial Aid & Scholarships](#)

## CAREER / POST-GRADUATION ASSISTANCE

UNCSA's [Office of Career Development](#) provides students with a central resource for assistance with their career planning. It is designed to work hand-in-hand with the five arts schools in supplementing career preparation training for students. UNCSA

## UNIVERSITY OF NORTH CAROLINA SCHOOL OF THE ARTS

students participate in career development seminars as part of their curriculum.

**KEY STATISTICS** (college level and above)

171 music students

**Music Faculty:** 26 full time, 24 adjunct

142 scholarships awarded

Scholarship details: \$7,109

## AREAS OF STUDY

Brass • Collaborative Piano • Composition (Performance) • Conducting • Guitar • Organ • Piano • Strings • Vocal Arts/Opera • Winds & Percussion

## DEGREE PROGRAMS

[Undergraduate Programs](#) / [Graduate Programs](#)

*Additional details:* These are concentrations within the UNCSA School of Music, since Music is the major. They are all geared toward performance. There are courses in jazz, theory, etc., but they are not concentrations. UNCSA has an arts entrepreneurship minor. UNCSA also has a School of Filmmaking that has a film music composition concentration.

**ADDITIONAL PROGRAMS** (non-matriculating/prep)

[A.J. Fletcher Opera Institute](#)

[Chrysalis Chamber Music Institute](#)

## ONLINE COURSES

[Online courses information](#)

Up to 25% will be available as hybrid or online-only courses

## PANDEMIC & SAFETY: SCHOOL POLICIES

[Policies & Procedures for this school](#)

Proof of vaccination required? (✓=Yes ✗=No)

✗ Students ✗ Faculty ✗ Staff

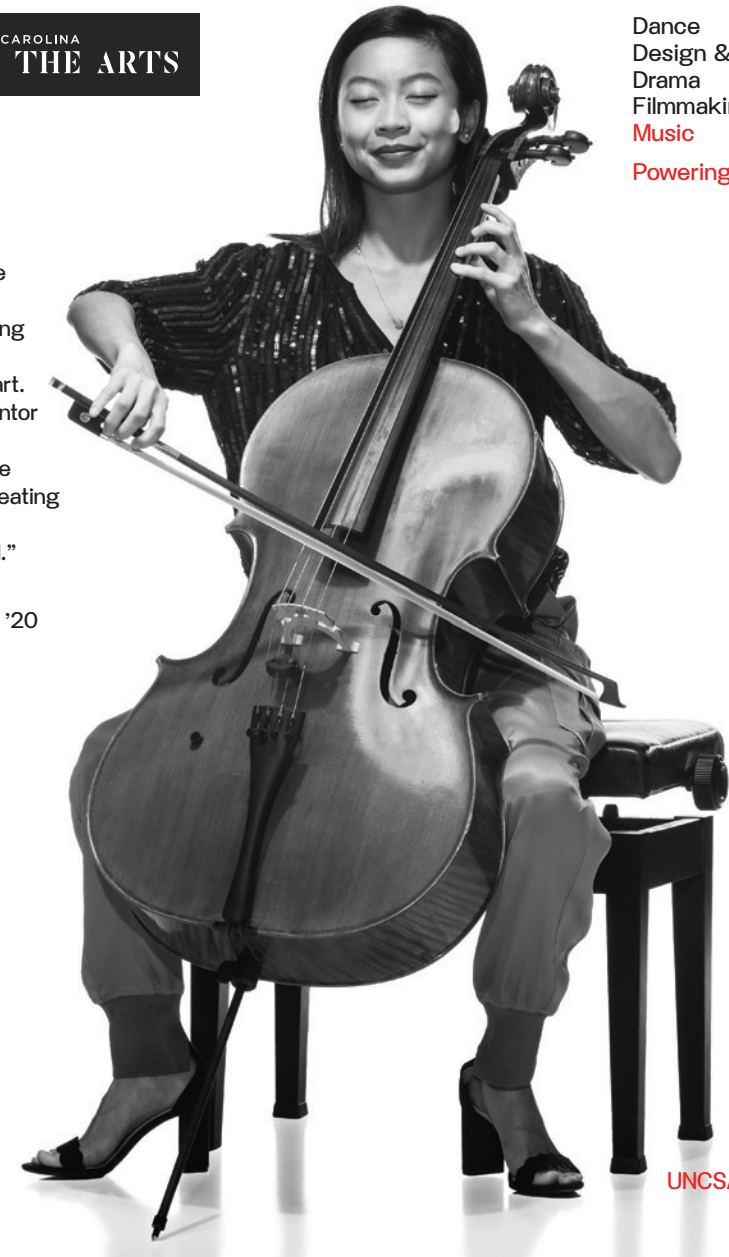
## SOCIAL LINKS



## UNIVERSITY OF NORTH CAROLINA SCHOOL OF THE ARTS

"UNCSA provided the resources I needed to become an inspiring artist, serving my community through art. My professor and mentor Brooks Whitehouse challenged me on the artistic level, while creating a safe space to be vulnerable and heard."

—Josie Greenwald  
School of Music '20



Dance  
Design & Production  
Drama  
Filmmaking  
Music  
Powering Creativity

[UNCSA.EDU/MUSIC](http://UNCSA.EDU/MUSIC)



# USC THORNTON SCHOOL OF MUSIC

University of Southern California

As the music profession changes, the USC Thornton School of Music offers an innovative education that prepares students for careers at the highest level as performers, composers, educators, and industry leaders. We do this while making the most of our location in Los Angeles, the nation's center for creativity and original art of all kinds.

Our three exceptional divisions offer cross-genre experiences unique among the country's top music schools. As a leading international research institution, USC offers students a rigorous, global education that enriches their artistic and musical development.

**LOCATION** 3450 Watt Way, TMC 200  
Los Angeles, CA 90089-1441  
UNITED STATES  
[music.usc.edu](https://music.usc.edu)

**ADMISSIONS** 213-740-8986  
[uscmusic@usc.edu](mailto:uscmusic@usc.edu)

**Audition Requirements** [Audition Requirements](#)

**FINANCIAL INFORMATION**  
[Tuition & Fees](#) / [Financial Aid & Scholarships](#)

## USC Thornton

School of Music

### CAREER / POST-GRADUATION ASSISTANCE

Various career-related courses are available for enrollment, and one-on-one mentorship with faculty is a central aspect of the USC Thornton experience. The USC Career Center offers services to current students and recent alums. USC Thornton alumni enjoy tremendous success in a wide array of music professions.

**KEY STATISTICS** (college level and above)  
**1000** music students  
**Music Faculty:** **90** full time, **90** adjunct

### AREAS OF STUDY

Arts Leadership • Brass • Collaborative Piano  
• Composition (Performance) • Early Music • Guitar  
• Jazz Studies & Contemporary Media • Music  
Business • Music Education • Musicology • Organ  
• Piano • Strings • Vocal Arts/Opera • Winds &  
Percussion • Choral & Sacred Music • Community  
Music • Music Industry • Music Production • Popular  
Music Performance • Popular Music Teaching and  
Learning • Screen Scoring • Studio Guitar

### DEGREE PROGRAMS

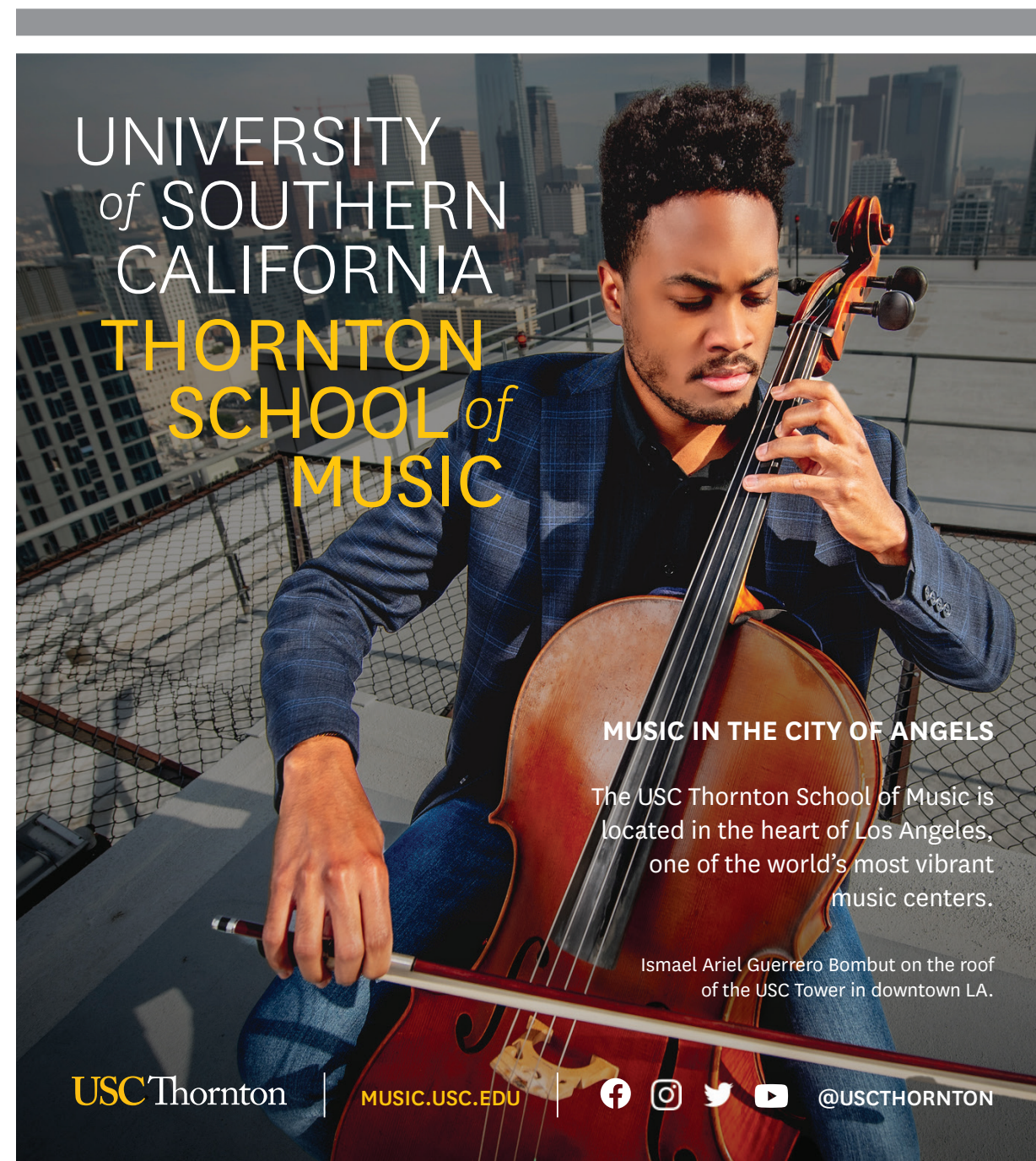
[Undergraduate Programs](#) / [Graduate Programs](#)

### PANDEMIC & SAFETY: SCHOOL POLICIES

[Policies & Procedures for this school](#)

Proof of vaccination required? (✓=Yes ✗=No)  
✓ Students ✓ Faculty ✓ Staff

**SOCIAL LINKS** [Twitter](#) [Facebook](#) [YouTube](#) [Instagram](#)



UNIVERSITY  
of SOUTHERN  
CALIFORNIA  
**THORNTON**  
SCHOOL of  
MUSIC

**MUSIC IN THE CITY OF ANGELS**

The USC Thornton School of Music is located in the heart of Los Angeles, one of the world's most vibrant music centers.

Ismael Ariel Guerrero Bombut on the roof of the USC Tower in downtown LA.

USC Thornton | [MUSIC.USC.EDU](https://music.usc.edu) | [Facebook](#) [Instagram](#) [Twitter](#) [YouTube](#) [@USCTHORNTON](#)

## UNIVERSITY OF UTAH SCHOOL OF MUSIC

### WHAT DISTINGUISHES THIS SCHOOL?

The School of Music's state-of-the-art facilities include four concert halls that support live streaming, an opera production center, a music library dedicated to student success, and a music technology studio with the latest gear.

**LOCATION** The University of Utah  
1375 East Presidents Circle  
204 David P. Gardner Hall  
Salt Lake City, UT 84112-0030  
UNITED STATES  
[music.utah.edu](https://music.utah.edu)

**ADMISSIONS** 801-581-6762  
[scholarships@music.utah.edu](mailto:scholarships@music.utah.edu)

**Audition Requirements** [Audition Requirements](#)

**FINANCIAL INFORMATION**  
[Tuition & Fees](#) / [Financial Aid & Scholarships](#)

**CAREER / POST-GRADUATION ASSISTANCE**  
[Career assistance](#)

### KEY STATISTICS (college level and above)

**374** music students

**Music Faculty:** **34** full time, **47** adjunct

### AREAS OF STUDY

Brass • Collaborative Piano • Composition (Performance) • Conducting • Guitar • Jazz Studies & Contemporary Media • Music Education • Musicology • Organ • Piano • Strings • Vocal Arts/Opera • Winds & Percussion

### DEGREE PROGRAMS

[Undergraduate Programs](#) / [Graduate Programs](#)

### PANDEMIC & SAFETY: SCHOOL POLICIES

[Policies & Procedures for this school](#)

Proof of vaccination required? (✓=Yes ✗=No)

✓ Students ✗ Faculty ✗ Staff

### SOCIAL LINKS



## WESTMINSTER COLLEGE OF THE ARTS

Rider University

### WHAT DISTINGUISHES THIS SCHOOL?

Art opens our minds, expands our world, and changes us for the better. That's why every Rider student has the opportunity to explore their artistic authenticity, whether pursuing a career in the arts or seeking the enrichment found through its study.

**LOCATION** 2083 Lawrenceville Road  
Lawrenceville, NJ 08683  
UNITED STATES  
[www.rider.edu/](http://www.rider.edu/)

**ADMISSIONS** 800-257-9026  
[admissions@rider.edu](mailto:admissions@rider.edu)

**Audition Requirements**  
[Undergraduate audition requirements](#)  
[Graduate audition requirements](#)

**FINANCIAL INFORMATION**  
[Tuition & Fees](#) / [Financial Aid & Scholarships](#)

### CAREER / POST-GRADUATION ASSISTANCE

All students have access to the resources and assistance offered through the office of [Career Development and Success](#) at Rider University. Students are also encouraged by their teachers and advisors to explore various performing opportunities available right on campus and take advantage of Rider's close proximity to New York and Philadelphia where thousands of opportunities await to make lasting connections and build your résumé.

### KEY STATISTICS (college level and above)

**400** music students

**Music Faculty:** **33** full time, **50** adjunct

### AREAS OF STUDY

Arts Leadership • Conducting • Media studies (including audio and video production) • Music Education • Vocal Arts/Opera • Acting for Film, Television and Theatre • Choral Conducting • Choral Pedagogy • Dance • Dance Science • Film and Television • Game and Interactive Media Design • Music Production • Musical Theatre • Sacred Music • Theatre • Voice Pedagogy

### DEGREE PROGRAMS

[Undergraduate Programs](#) / [Graduate Programs](#)

### ONLINE COURSES

[Online courses information](#)

Up to 25% will be available as hybrid or online-only courses

### PANDEMIC & SAFETY: SCHOOL POLICIES

[Policies & Procedures for this school](#)

Proof of vaccination required? (✓=Yes ✗=No)

✓ Students ✗ Faculty ✗ Staff

### SOCIAL LINKS





# YALE SCHOOL OF MUSIC

Yale University

At the Yale School of Music, we prepare exceptional students for service to the profession and to society. The School fosters a vibrant musical environment where graduate-level performers and composers realize their highest artistic potential with an internationally distinguished faculty. In preparing students for roles as cultural leaders, the School engages with the University's intellectual and technological resources and collaborates with artistic centers throughout the world.

## WHAT DISTINGUISHES THIS SCHOOL?

YSM maintains a highly selective admission process, each year admitting approximately 100 students who come from prestigious American and international conservatories and universities to study with Yale's distinguished faculty. A full tuition award and living stipend is given to all students who are admitted to the School.

**LOCATION** 98 Wall Street  
PO Box 208246  
New Haven, CT 06520-8246  
UNITED STATES  
[music.yale.edu](https://music.yale.edu)

**ADMISSIONS** 203-432-4155  
[gradmusic.admissions@yale.edu](mailto:gradmusic.admissions@yale.edu)

**Audition Requirements** [Audition Requirements](#)

## FINANCIAL INFORMATION

[Tuition & Fees](#) / [Financial Aid & Scholarships](#)

# Yale SCHOOL OF MUSIC

## CAREER / POST-GRADUATION ASSISTANCE

[Career Assistance](#)

**KEY STATISTICS** (college level and above)  
**200** music students  
**Music Faculty:** **40** full time, **30** adjunct  
*Scholarship details:* \$40,000

## AREAS OF STUDY

Brass • Collaborative Piano • Composition  
(Performance) • Conducting • Guitar • Organ • Piano  
• Strings • Vocal Arts/Opera • Winds & Percussion  
• Harp • Harpsichord • String Quartet

## DEGREE PROGRAMS

[Undergraduate Programs](#) / [Graduate Programs](#)

*Additional details:* Degrees & Programs offered:  
Master of Music; Master of Musical Arts; Doctor  
of Musical Arts; Artist Diploma; Certificate in  
Performance; B.A./M.M.; String Quartet Fellowship;  
Collaborative Piano Fellowship

## ADDITIONAL PROGRAMS (non-matriculating/prep)

[Norfolk Chamber Music Festival / Yale Summer  
School of Music](#)  
[Morris Steinert Collection of Musical Instruments](#)  
[Music in Schools Initiative](#)

## PANDEMIC & SAFETY: SCHOOL POLICIES

[Policies & Procedures for this school](#)

Proof of vaccination required? (✓=Yes ✗=No)  
✓ Students ✓ Faculty ✓ Staff

## SOCIAL LINKS

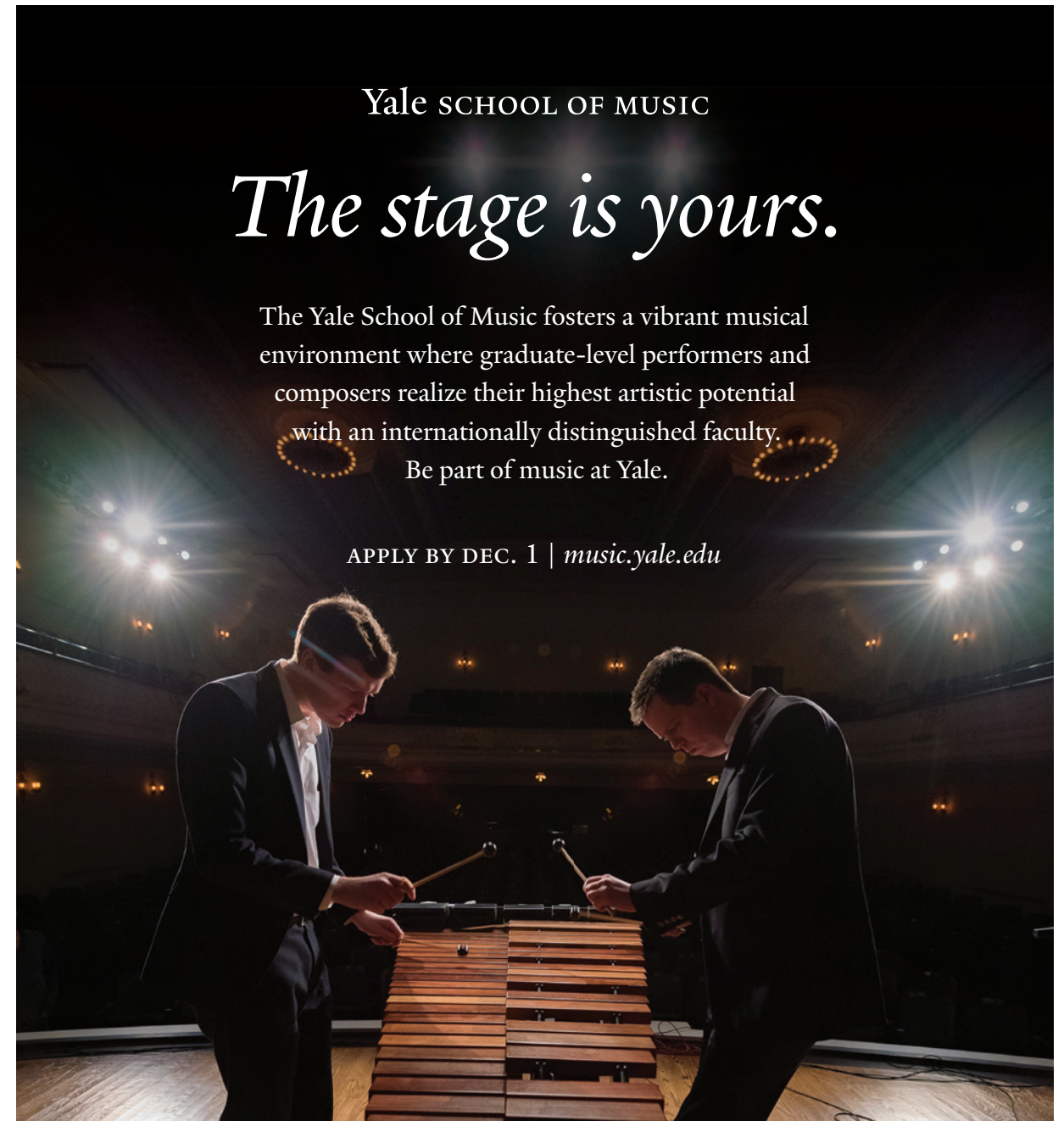


## Yale SCHOOL OF MUSIC

# The stage is yours.

The Yale School of Music fosters a vibrant musical environment where graduate-level performers and composers realize their highest artistic potential with an internationally distinguished faculty.  
Be part of music at Yale.

APPLY BY DEC. 1 | [music.yale.edu](https://music.yale.edu)



In addition to the Music Schools featured in this special report, the [Musical America database](#) of more than 1200 music schools worldwide is free of charge for the month of September 2022.

### [A Guide to Music Schools](#)

View the 2022–23 Guide online along with information about additional schools.

## In The Next Issue...

# Summer Camps, Institutes & Programs

*The Musical America Guide*

*Coming 1 November 2022*

Questions? Email [info@musicalamerica.com](mailto:info@musicalamerica.com)

## Advertiser Index

Boston Conservatory at Berklee .....	7
Hall-Musco Conservatory of Music, Chapman University .....	34
The Colburn School .....	11
Crane School of Music, SUNY Potsdam .....	8
DePaul University School of Music.....	15
The Eastman School of Music .....	40
The Glenn Gould School.....	21
Halsey Institute of Music and Entertainment Business .....	13
The Juilliard School.....	24
National Federation of Music Clubs.....	3
Northeastern University Department of Music .....	32
Northwestern University Bienen School of Music.....	5
Oberlin Conservatory of Music.....	17
PRISMA (Pacific Region International Summer Music Association)	
Festival & Academy .....	29
The Peabody Conservatory of the Johns Hopkins University .....	31
Royal College of Music .....	27
The Shepherd School of Music–Rice University.....	18
The Tianjin Juilliard School.....	19
Trinity Laban Conservatoire of Music and Dance .....	36
University of Cincinnati College–Conservatory of Music (CCM).....	38
The University of Michigan School of Music, Theatre & Dance.....	10
University of North Carolina School of the Arts .....	42
USC Thornton School of Music .....	43
University of Utah School of Music .....	8
Yale School of Music .....	45

**Stephanie Challenger**

*Publisher and Managing Editor*

**Susan Elliott**

*Editor, News and Special Reports*

[editor@musicalamerica.com](mailto:editor@musicalamerica.com)

**Frances Wan**

*Design Director | Database Publishing Specialist*

**Howard Roth**

*Business Consultant*

**Clive Paget**

*Features Editor, Musical America Directory*

**Bill Esposito**

*Manager of Listing Services*

[listings@musicalamerica.com](mailto:listings@musicalamerica.com)

**Tony Maiorino**

*Advertising Sales Representative*

609-651-0874 ■ [info@musicalamerica.com](mailto:info@musicalamerica.com)

**Carolyn Eychenne** (Europe)

*Advertising Sales Representative*

33.1.39.58.14.01 ■ [carolyn@eychenne.me](mailto:carolyn@eychenne.me)

**Andrea Rancati** (Italy)

*Advertising Sales Representative*

39.02.703.00088 ■ [arancati@rancatinet.it](mailto:arancati@rancatinet.it)

**PUBLISHED BY**

**Performing Arts  
Resources, LLC**  
Your source for news and information

**PERFORMING ARTS RESOURCES, LLC**

14846 Gates Avenue, Magnolia Springs, AL 36555

609-651-0874 ■ [info@musicalamerica.com](mailto:info@musicalamerica.com)