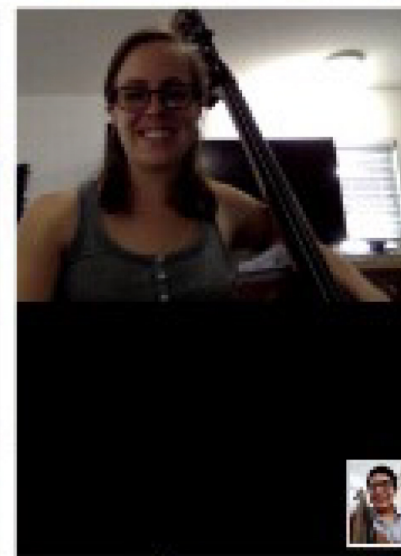
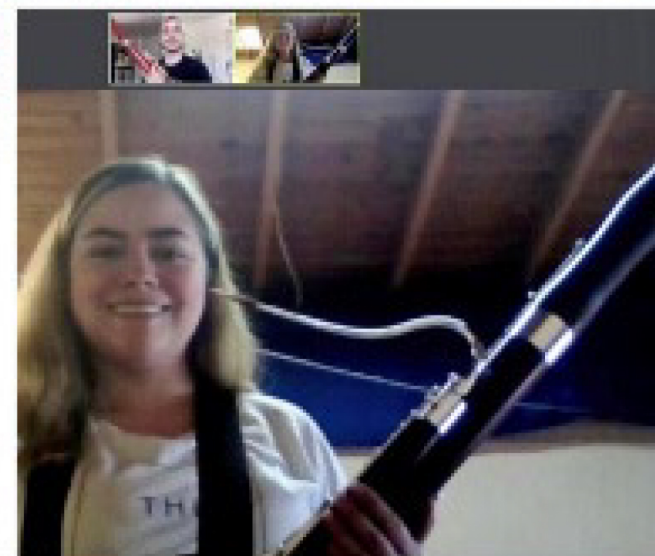
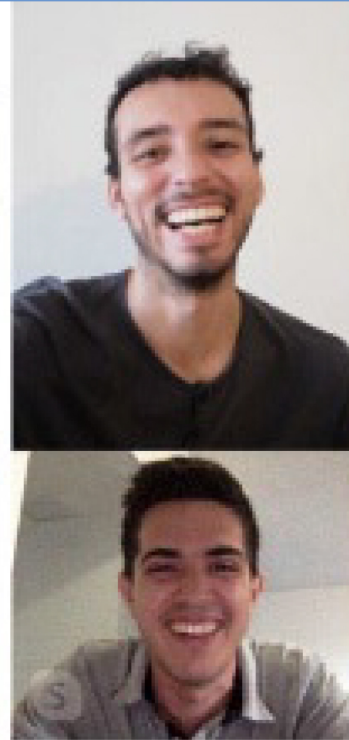
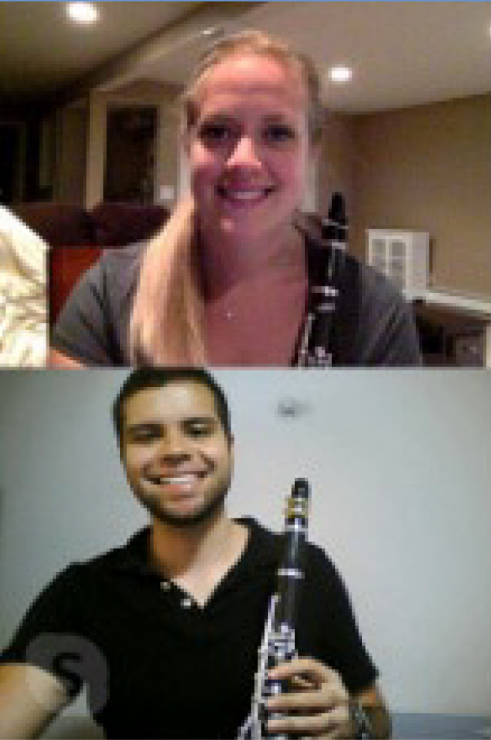


The 2020-21 Guide to MUSIC SCHOOLS

With special pandemic-related questions

musical
america
September
2020
SPECIAL REPORTS



MUSIC SCHOOLS

For those schools in the listings, you'll find detailed information on degrees offered, available areas of study, numbers of students and teachers, career and post-graduate assistance, and links to social media and financial information. We also asked each institution to describe its most "distinguishing characteristics." We relied on the schools to tell their own stories.

Academy of Vocal Arts.....	2	New World Symphony, America's Orchestral Academy	24
Arizona State University School of Music.....	2	Northeastern University Department of Music	25
Bard College Conservatory of Music	3	Oberlin Conservatory of Music.....	25
Bienen School of Music	3	Ohio State University School of Music	26
Blair School of Music	3	Opera Steamboat	26
Boston Conservatory at Berklee	4	Park University International Center for Music	26
Boston University School of Music.....	5	Peabody Conservatory.....	27
Sarah and Ernest Butler School of Music	5	Peck School of the Arts.....	28
Carnegie Mellon University School of Music	6	Pepperdine University	28
Cleveland Institute of Music	6	Purchase College Conservatory of Music.....	29
Aaron Copland School of Music	7	Royal College of Music.....	29
The Crane School of Music.....	7	San Francisco Conservatory of Music	30
Curtis Institute of Music	8	Shanghai Orchestra Academy (SOA)	30
Depauw University School of Music.....	9	Shenandoah Conservatory	31
Eastman School of Music.....	9	The Shepherd School of Music.....	31
Hanns Eisler School of Music Berlin	10	The Tianjin Juilliard School	32
Florida State University College of Music.....	10	UCLA Herb Alpert School of Music	33
Frost School of Music.....	11	University of California, Berkeley.....	33
Hugh A. Glauser School of Music	11	University of Cincinnati College—	
The Glenn Gould School		Conservatory of Music (CCM).....	34
at The Royal Conservatory of Music	12	University of Colorado Boulder.....	35
Guildhall School of Music & Drama	13	University of Florida	35
The Hartt School	14	University of Illinois School of Music	36
IClassical Academy	15	University of Massachusetts Amherst	
Indiana University Jacobs School of Music.....	16	Department of Music & Dance	36
JAM Music Lab University.....	17	University of Massachusetts Lowell	
The Juilliard School	18	Department of Music	37
Lamont School of Music	19	University of Michigan School of Music, Theatre & Dance.....	37
Longy School of Music.....	20	University of North Carolina School of The Arts	38
Lynn University Conservatory of Music.....	21	University of North Texas College of Music	39
Manhattan School of Music.....	22	USC Thornton School of Music	40
Mannes School of Music.....	23	The University of Tampa	41
Mason Gross School of The Arts	23	Weitzenhoffer Family College of Fine Arts	41
Robert McDuffie Center for Strings	23	Westminster Choir College	41
New England Conservatory	24	Yale School of Music.....	42

Editor's Note



The Guide to Music Schools is always a substantial undertaking as well as a challenge to track down the right people who have the right answers to our (many) questions.

And that's under normal circumstances.

Needless to say, we are not in normal circumstances. Looking into what is still a very cloudy crystal ball, we have added a few practical, pandemic-caused questions this year: Will you be starting in the fall as planned? Later? Will classes shift online? Will masks be required on campus? What about testing? Will classes be smaller? Any academic changes in store? Will

on-campus housing be altered? Tuition change?

Virtually everyone is shifting at least in part to the online model, as well as requiring masks and altering class size for in-person schooling. Testing is also pretty universal; semester start dates remain the same and so does tuition in most cases. The one element that remains unchanged is academics.

And that's what is so impressive about this year's Guide entrants: Despite the pandemic, despite the herculean effort it has taken to shift courses online, maintain constant contact with students over the summer, adjust schedules, order pallets' worth of PPE, move beds in dorms, tables in dining room, desks in classrooms, etc. etc., training for young musicians continues, unabated.

Consider: a new generation of musicians who are not only learning their craft, but also developing new coping skills, learning how to go with the flow, and, perhaps most importantly, become video producers par excellence.

Talk about making lemonade.

Regards,

Susan Elliott

Editor, Special Reports



The 2020-21 Guide to
Music Schools
With special pandemic-related questions

PHOTO: University of North Carolina School of the Arts student Maitreyi Muralidharan, 17 August 2020.

ACADEMY OF VOCAL ARTS

WHAT DISTINGUISHES THIS SCHOOL?

The Academy of the Vocal Arts is the only nationally accredited conservatory in the United States exclusively devoted to the training of young opera singers, tuition-free. Artists from throughout the States and all over the world audition to study and perform in AVA's four-year program.

LOCATION 1920 Spruce Street
Philadelphia, PA 19103
UNITED STATES
www.avaopera.org/

ADMISSIONS 215-735-1685
info@avaopera.org

Audition Requirements [Audition Requirements](#)

FINANCIAL INFORMATION
[Tuition & Fees](#) / [Financial Aid & Scholarships](#)

CAREER / POST-GRADUATION ASSISTANCE
At this time, no degrees are granted, but Artist Diplomas are awarded to those whom the AVA believes are ready for operatic and concert careers and have completed the minimum required classes. AVA is an accredited, non-degree-granting member of the National Association of Schools of Music. Course work completed at AVA does not compile credit-hours and is not transferable to other institutions.

KEY STATISTICS (college level and above)

23 music students
Music Faculty: **20** full time, **3** adjunct

AREAS OF STUDY

Vocal Arts/Opera

DEGREE PROGRAMS

No degrees offered. Resident Artists graduate with Artist Diploma.

PANDEMIC & SAFETY

✓=Yes X=No ○=Under consideration

Is the school considering:

- *Shifting semester start and/or end dates?*
- *Changes to class and/or ensemble sizes?*
- *Shifting more coursework online?*
- ✓ *Requiring masks for students, faculty, staff?*
- n/a *Reducing on-campus housing density, if provided?*

Does the school plan to test all for COVID-19 at term start, then periodically? ○

Does the school plan changes to tuition and/or room & board fees? ○

SOCIAL LINKS    

ARIZONA STATE UNIVERSITY SCHOOL OF MUSIC

For current information, please [see this school's website](#).

BARD COLLEGE CONSERVATORY OF MUSIC

Bard College

WHAT DISTINGUISHES THIS SCHOOL?

All Conservatory undergraduates pursue a five-year program leading to two degrees: the Bachelor of Music degree and the Bachelor of Arts degree in a field other than music. The Conservatory is now accepting applications for its new undergraduate voice program.

LOCATION 30 Campus Road
Annandale-on-Hudson, NY 12504
www.bard.edu/conservatory/

ADMISSIONS 845-752-2409
conservatoryadmission@bard.edu

Audition Requirements

[Undergraduate Double Degree requirements](#)
[Graduate Vocal Arts Program requirements](#)
[Graduate Conducting Program requirements](#)

FINANCIAL INFORMATION

[Tuition & Fees](#) / [Financial Aid & Scholarships](#)

CAREER / POST-GRADUATION ASSISTANCE

Our undergraduates tend to pursue graduate degrees from other major conservatories.

KEY STATISTICS (college level and above)

150 music students

Music Faculty: 13 full time, 80 adjunct

AREAS OF STUDY

Brass • Collaborative Piano • Composition (Performance) • Conducting • Piano • Strings • Vocal Arts/Opera • Winds & Percussion

DEGREE PROGRAMS

[Undergraduate Programs](#) / [Graduate Vocal Arts / Graduate Conducting](#)
[Post-Graduate Collaborative Piano Fellowship](#)

Additional details: Bachelor of Music degrees in performance through a double-degree program; instruments offered are: Pipa; Erhu; Guzheng; Ruan; Dizi; Sheng; Guqin; Chinese Percussion

PANDEMIC & SAFETY

✓=Yes ✗=No ○=Under consideration

[Policies & Procedures for this school](#)

Is the school considering:

✗ *Shifting semester start and/or end dates?*

✓ *Changes to class and/or ensemble sizes?*

✓ *Shifting more coursework online?*

✓ *Requiring masks for students, faculty, staff?*

✗ *Reducing on-campus housing density, if provided?*

Does the school plan to test all for COVID-19 at term start, then periodically? ✓

Does the school plan changes to tuition and/or room & board fees? ✗

SOCIAL LINKS



BIENEN SCHOOL OF MUSIC

Northwestern University

For current information, please [see this school's website](#).

BLAIR SCHOOL OF MUSIC

Vanderbilt University

WHAT DISTINGUISHES THIS SCHOOL?

Blair is a conservatory-level music program alongside a top-15 academic institution. It is one of the few exclusively undergraduate music schools in the country.

LOCATION 2400 Blakemore Avenue
Nashville, TN 37212
UNITED STATES
blair.vanderbilt.edu/

ADMISSIONS 615-322-6181
blair.inquiries@vanderbilt.edu

Audition Requirements [Audition Requirements](#)

FINANCIAL INFORMATION

[Tuition & Fees](#) / [Financial Aid & Scholarships](#)

CAREER / POST-GRADUATION ASSISTANCE

[Career assistance](#)

KEY STATISTICS (college level and above)

220 music students

Music Faculty: 58 full time, 52 adjunct

AREAS OF STUDY

Brass • Composition (Performance) • Jazz Studies & Contemporary Media • Music Education • Piano • Strings • Vocal Arts/Opera • Winds & Percussion

DEGREE PROGRAMS

[Undergraduate Programs](#)

Additional details: Bachelor of Music in: Performance; Composition; Jazz Studies; Integrated Studies; Bachelor of Music and MBA; M.Ed.; Bachelor of Musical Arts

PANDEMIC & SAFETY

✓=Yes ✗=No ○=Under consideration

[Policies & Procedures for this school](#)

Is the school considering:

✓ *Shifting semester start and/or end dates?*

✓ *Changes to class and/or ensemble sizes?*

✓ *Shifting more coursework online?*

✓ *Requiring masks for students, faculty, staff?*

✓ *Reducing on-campus housing density, if provided?*

Does the school plan to test all for COVID-19 at term start, then periodically? ○

Does the school plan changes to tuition and/or room & board fees? ✗

SOCIAL LINKS



BOSTON CONSERVATORY AT BERKLEE

WHAT DISTINGUISHES THIS SCHOOL?

Boston Conservatory at Berklee is internationally recognized as an innovative leader among conservatory programs focused on elevating every aspect of the performing arts.

LOCATION

8 Fenway
Boston, MA 02215
bostonconservatory.berklee.edu/

ADMISSIONS

617-912-9153
conservatoryadmissions@berklee.edu

Audition Requirements

[Audition Requirements](#)

FINANCIAL INFORMATION

[Tuition & Fees](#) / [Financial Aid & Scholarships](#)

CAREER / POST-GRADUATION ASSISTANCE

The Berklee Career Center provides expert guidance, cutting-edge resources, and professional development experiences to help our diverse body of students achieve their career goals.



KEY STATISTICS (college level and above)

409 music students
Music Faculty: 43 full time, 71 adjunct

AREAS OF STUDY

Brass • Collaborative Piano • Composition (Performance) • Conducting • Music Education • Piano • Strings • Vocal Arts/Opera • Winds & Percussion • Marimba • Musical Theater • Contemporary Classical Music • Vocal Pedagogy • Musical Theater Vocal Pedagogy

DEGREE PROGRAMS

[Undergraduate Programs](#) / [Graduate Programs](#)

ADDITIONAL PROGRAMS

(non-matriculating/prep)
[Summer Programs](#)
[Extension Programs](#)

PANDEMIC & SAFETY

✓=Yes ✗=No ○=Under consideration

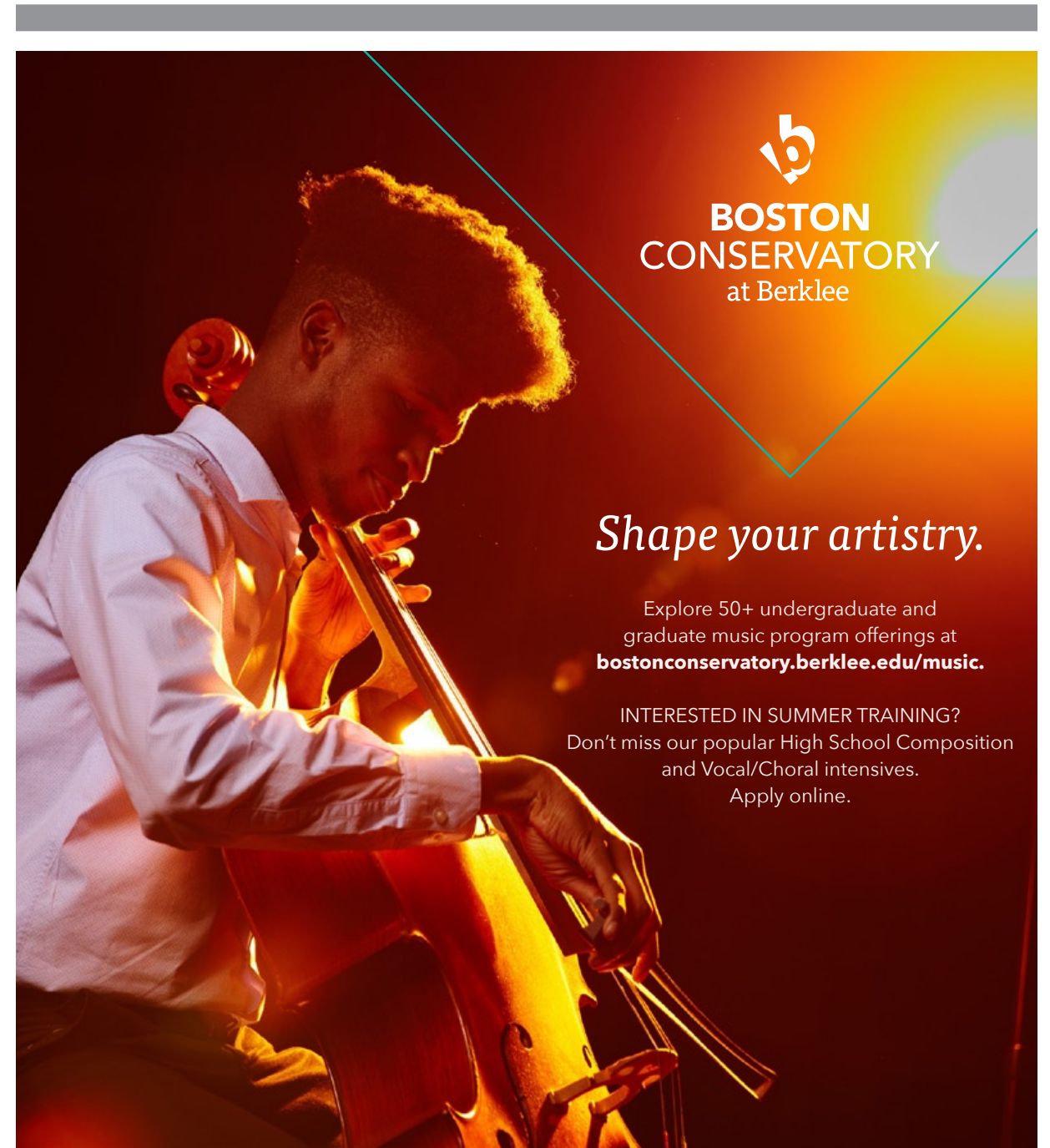
Is the school considering:

- ✗ *Shifting semester start and/or end dates?*
- ✓ *Changes to class and/or ensemble sizes?*
- ✓ *Shifting more coursework online?*
- ✓ *Requiring masks for students, faculty, staff?*
- n/a *Reducing on-campus housing density, if provided?*

Does the school plan to test all for COVID-19 at term start, then periodically? ✓

Does the school plan changes to tuition and/or room & board fees? ✓

SOCIAL LINKS




**BOSTON
CONSERVATORY**
at Berklee

Shape your artistry.

Explore 50+ undergraduate and graduate music program offerings at bostonconservatory.berklee.edu/music.

INTERESTED IN SUMMER TRAINING?
Don't miss our popular High School Composition and Vocal/Choral intensives.
Apply online.

BOSTON UNIVERSITY SCHOOL OF MUSIC

WHAT DISTINGUISHES THIS SCHOOL?

The Boston University School of Music is a community of academically and artistically extraordinary musicians within a major research university located in one of the great music capitals of America. We are committed to the highest artistic and professional standards in performance, composition, music education, and musicology.

LOCATION 855 Commonwealth Avenue
Boston, MA 02215
UNITED STATES
www.bu.edu/cfa/

ADMISSIONS 617-353-3341
cfamusic@bu.edu

Audition Requirements [Audition Requirements](#)

FINANCIAL INFORMATION

[Tuition & Fees](#) / [Financial Aid & Scholarships](#)

CAREER / POST-GRADUATION ASSISTANCE

Throughout the year, Boston University School of Music offers a series of career development workshops taught by alumni and professionals in their field. Career assistance links: bu.edu/careers and bu.edu/cfa/current-students/leadership-careers

KEY STATISTICS (college level and above)

500 music students
Music Faculty: **70** full time, **88** adjunct

AREAS OF STUDY

Brass • Collaborative Piano • Composition (Performance) • Conducting • Early Music • Jazz Studies & Contemporary Media • Music Education • Music Technology (including Production) • Musicology • Organ • Piano • Strings • Vocal Arts/Opera • Winds & Percussion

DEGREE PROGRAMS

[Undergraduate Programs](#) / [Graduate Programs](#)

ONLINE COURSES

[Online courses information](#)

PANDEMIC & SAFETY

✓=Yes ✗=No ○=Under consideration

[Policies & Procedures for this school](#)

Is the school considering:

- ✗ *Shifting semester start and/or end dates?*
- ✓ *Changes to class and/or ensemble sizes?*
- ✓ *Shifting more coursework online?*
- ✓ *Requiring masks for students, faculty, staff?*
- ✓ *Reducing on-campus housing density, if provided?*

Does the school plan to test all for COVID-19 at term start, then periodically? ✓

Does the school plan changes to tuition and/or room & board fees? ✗

SOCIAL LINKS   

SARAH AND ERNEST BUTLER SCHOOL OF MUSIC

The University of Texas at Austin

WHAT DISTINGUISHES THIS SCHOOL?

The Butler School of Music at The University of Texas at Austin offers comprehensive undergraduate and graduate programs designed to prepare artists, thinkers, makers and teachers ready and able to make profound contributions to the future of music.

LOCATION 2406 Robert Dedman Drive
Stop E3100
Austin, TX 78712-1555
UNITED STATES
music.utexas.edu/

ADMISSIONS 512-471-7764
uga@mail.music.utexas.edu

Audition Requirements [Audition Requirements](#)

FINANCIAL INFORMATION

[Tuition & Fees](#) / [Financial Aid & Scholarships](#)

CAREER / POST-GRADUATION ASSISTANCE

Fine Arts Career Services offers resources tailored to the College of Fine Arts undergraduate and graduate student body. Arts-career advisors work extensively with students to prepare them for an increasingly competitive industry. Graduation isn't the end of a student's relationship with FACS. The office remains accessible to alumni of the college for life. [Visit for more information](#). Career advising and planning services are also available from the University's [Center for Strategic Advising & Career Counseling](#).

KEY STATISTICS (college level and above)

610 music students
Music Faculty: **85** full time, **10** adjunct

AREAS OF STUDY

Brass • Collaborative Piano • Composition (Performance) • Conducting • Early Music • Jazz Studies & Contemporary Media • Music Education • Musicology • Organ • Piano • Strings • Vocal Arts/Opera • Winds & Percussion • Chamber Music • Ethnomusicology • Literature and Pedagogy • Music Theory • Opera Coaching • Opera Directing

DEGREE PROGRAMS

[Undergraduate Programs](#) / [Graduate Programs](#)

Additional details: Bachelor of Arts; Bachelor of Music; Master of Music; Artist Diploma; Doctor of Musical Arts; Doctor of Philosophy

PANDEMIC & SAFETY

✓=Yes ✗=No ○=Under consideration

[Policies & Procedures for this school](#)

Is the school considering:

- ✗ *Shifting semester start and/or end dates?*
- ✓ *Changes to class and/or ensemble sizes?*
- ✓ *Shifting more coursework online?*
- ✓ *Requiring masks for students, faculty, staff?*
- ✓ *Reducing on-campus housing density, if provided?*

Does the school plan to test all for COVID-19 at term start, then periodically? ✗

Does the school plan changes to tuition and/or room & board fees? ✗

SOCIAL LINKS   

CARNEGIE MELLON UNIVERSITY SCHOOL OF MUSIC

WHAT DISTINGUISHES THIS SCHOOL?

The School of Music combines the strengths of a conservatory with those of a global research university. Students are a part of a diverse fine arts community on campus and in the city of Pittsburgh.

LOCATION 5000 Forbes Avenue
Pittsburgh, PA 15213
UNITED STATES
www.cmu.edu/cfa/music/

ADMISSIONS

412-268-4118
music-admissions@andrew.cmu.edu

Audition Requirements [Audition Requirements](#)

FINANCIAL INFORMATION

[Tuition & Fees](#) / [Financial Aid & Scholarships](#)

CAREER / POST-GRADUATION ASSISTANCE

Our distinguished alumni populate the ranks of the world's most prestigious orchestras, opera companies, and faculties including: the New York Philharmonic, Chicago Symphony Orchestra, The Metropolitan Opera, Harvard University, Prague Philharmonia, Oberlin College & Conservatory, Boston Pops, BBC Orchestras, Lyric Opera of Chicago, and many more.

KEY STATISTICS (college level and above)

450 music students
Music Faculty: **35** full time, **51** adjunct

AREAS OF STUDY

Brass • Collaborative Piano • Composition (Performance) • Conducting • Music Education • Music Technology (including Production) • Piano • Strings • Vocal Arts/Opera • Winds & Percussion • Music Entrepreneurship • Orchestral Studies

DEGREE PROGRAMS

[Undergraduate Programs](#) / [Graduate Programs](#)

Additional details: Interdisciplinary degrees (BXA)

PANDEMIC & SAFETY

✓=Yes ✗=No ○=Under consideration

[Policies & Procedures for this school](#)

Is the school considering:

- ✗ *Shifting semester start and/or end dates?*
- *Changes to class and/or ensemble sizes?*
- ✓ *Shifting more coursework online?*
- ✓ *Requiring masks for students, faculty, staff?*
- ✓ *Reducing on-campus housing density, if provided?*

Does the school plan to test all for COVID-19 at term start, then periodically? ○

Does the school plan changes to tuition and/or room & board fees? ✗

SOCIAL LINKS



CLEVELAND INSTITUTE OF MUSIC

WHAT DISTINGUISHES THIS SCHOOL?

CIM is an independent conservatory known for superior orchestral, chamber music, composition, piano, and voice programs at both the undergraduate and graduate levels. Many of its faculty are members of The Cleveland Orchestra.

LOCATION 11021 East Boulevard
Cleveland, OH 44106
UNITED STATES
www.cim.edu/

ADMISSIONS 216-795-3107
admission@cim.edu

Audition Requirements [Audition Requirements](#)

FINANCIAL INFORMATION

[Tuition & Fees](#) / [Financial Aid & Scholarships](#)

CAREER / POST-GRADUATION ASSISTANCE

For much of its nearly 100-year history, CIM's individual faculty members have engaged in career-focused coaching of students and alumni. [The CIM Center for Innovative Musicianship \(CIM²\)](#) cements these tremendous career resources by building an educational framework, including the coursework and experiential learning necessary for successful career development.

KEY STATISTICS (college level and above)

350 music students
Music Faculty: **29** full time, **80** adjunct

AREAS OF STUDY

Brass • Collaborative Piano • Composition (Performance) • Conducting • Organ • Piano • Strings • Vocal Arts/Opera • Winds & Percussion • Classical Guitar

DEGREE PROGRAMS

[Undergraduate Programs](#) / [Graduate Programs](#)

Additional details: Music Theory (as an undergraduate double major only); Suzuki Pedagogy (master's program only); minor and dual degree programs offered in association with Case Western Reserve University

PANDEMIC & SAFETY

✓=Yes ✗=No ○=Under consideration

[Policies & Procedures for this school](#)

Is the school considering:

- ✓ *Shifting semester start and/or end dates?*
- ✓ *Changes to class and/or ensemble sizes?*
- ✓ *Shifting more coursework online?*
- ✓ *Requiring masks for students, faculty, staff?*
- ✗ *Reducing on-campus housing density, if provided?*

Does the school plan to test all for COVID-19 at term start, then periodically? ○

Does the school plan changes to tuition and/or room & board fees? ✗

SOCIAL LINKS



AARON COPLAND SCHOOL OF MUSIC

CUNY Queens College

WHAT DISTINGUISHES THIS SCHOOL?

Queens College is a liberal arts college, boasting excellent programs in many areas, and the School of Music is the jewel in the crown. Students at the Aaron Copland School of Music get a world-class education at the center of the cultural universe for an impressively affordable tuition.

LOCATION Room 203, Queens College, CUNY
65-30 Kissena Boulevard
Queens, NY 11367-1597
UNITED STATES
qcpages.qc.cuny.edu/music/

ADMISSIONS 718-997-3800
Jane.cho@qc.cuny.edu

Audition Requirements

[Auditions are offered in February-March of each year.](#)

FINANCIAL INFORMATION

[Tuition & Fees](#) / [Financial Aid & Scholarships](#)

CAREER / POST-GRADUATION ASSISTANCE

ACSM has an excellent career placement record for the music education graduates (99% placement rate). We also offer Business of Music and Music Career Development courses to provide critical industry knowledge to our students.

KEY STATISTICS (college level and above)

450 music students

Music Faculty: 25 full time, 59 adjunct

20 scholarships awarded

AREAS OF STUDY

Brass • Composition (Performance) • Conducting
• Early Music • Jazz Studies & Contemporary Media
• Music Business • Music Education
• Music Technology (including Production)
• Musicology • Organ • Piano • Strings • Vocal Arts/
Opera • Winds & Percussion

DEGREE PROGRAMS

Bachelor of Music, Music Education; Bachelor of Arts, General Music; Bachelor of Music, Music Performance
[Undergraduate Programs](#) / [Graduate Programs](#)

ONLINE COURSES

[Online courses information](#)

PANDEMIC & SAFETY

✓=Yes ✗=No ○=Under consideration

[Policies & Procedures for this school](#)

Is the school considering:

✗ *Shifting semester start and/or end dates?*

✓ *Changes to class and/or ensemble sizes?*

✓ *Shifting more coursework online?*

✓ *Requiring masks for students, faculty, staff?*

n/a *Reducing on-campus housing density, if provided?*

Does the school plan to test all for COVID-19 at term start, then periodically? ○

Does the school plan changes to tuition and/or room & board fees? ○

SOCIAL LINKS



THE CRANE SCHOOL OF MUSIC

State University of New York Potsdam

WHAT DISTINGUISHES THIS SCHOOL?

Crane is an undergraduate-focused music school with attentive full-time faculty. We are part of SUNY Potsdam, an arts-centric school, with 575 music majors and where about 25% of students major in the arts. At Crane, students can choose from a wide variety of programs and majors.

LOCATION

44 Pierrepont Avenue
Potsdam, NY 13676
UNITED STATES
www.potsdam.edu/academics/crane-school-music

ADMISSIONS 315-267-2812
auditions@potsdam.edu

Audition Requirements [Audition Requirements](#)

FINANCIAL INFORMATION

[Tuition & Fees](#) / [Financial Aid & Scholarships](#)

CAREER / POST-GRADUATION ASSISTANCE

Students in each major work closely with faculty and staff at Crane and SUNY Potsdam's Career Services Office in formulating their post-graduation plans. Crane alumni include thousands of educators, performers, composers, researchers, leaders in the music industry, and musicians of renown, a network of graduates who can be found throughout North America and around the world.

KEY STATISTICS (college level and above)

575 music students

Music Faculty: 74 full time, 18 adjunct

AREAS OF STUDY

Arts Leadership • Brass • Composition (Performance)
• Music Business • Music Education • Musicology
• Piano • Strings • Vocal Arts/Opera • Winds & Percussion • Music Theory

DEGREE PROGRAMS

[Undergraduate Programs](#) / [Graduate Programs](#)

ONLINE COURSES

[Online courses information](#)

PANDEMIC & SAFETY

✓=Yes ✗=No ○=Under consideration

[Policies & Procedures for this school](#)

Is the school considering:

○ *Shifting semester start and/or end dates?*

○ *Changes to class and/or ensemble sizes?*

✓ *Shifting more coursework online?*

✓ *Requiring masks for students, faculty, staff?*

✓ *Reducing on-campus housing density, if provided?*

Does the school plan to test all for COVID-19 at term start, then periodically? ○

Does the school plan changes to tuition and/or room & board fees? ○

SOCIAL LINKS



CURTIS INSTITUTE OF MUSIC

WHAT DISTINGUISHES THIS SCHOOL?

Curtis's celebrated faculty includes a high proportion of actively performing musicians whose experience provides students with a direct link to life as a professional musician today. With a student body of about 150 and 100 faculty members, all students receive highly personalized attention.

LOCATION 1726 Locust Street
Philadelphia, PA 19103
UNITED STATES
www.curtis.edu/

ADMISSIONS 215-717-3117
chris.hodges@curtis.edu

Audition Requirements [Audition Requirements](#)

FINANCIAL INFORMATION

[Tuition & Fees](#) / [Financial Aid & Scholarships](#)

CAREER / POST-GRADUATION ASSISTANCE

Curtis offers several professional bridge programs including fellowships for conductors and string quartets that provide performance and mentorship opportunities. The post-graduate [Community Artist Fellowship](#) works with underserved communities, providing training in teaching, interactive performance, and strategic planning.

KEY STATISTICS (college level and above)
150 music students
Music Faculty: 3 full time, 111 adjunct
150 scholarships awarded

CURTIS INSTITUTE OF MUSIC (cont'd)

AREAS OF STUDY

Brass • Composition (Performance) • Conducting
• Organ • Piano • Strings • Vocal Arts/Opera • Winds
& Percussion

DEGREE PROGRAMS

[Undergraduate Programs](#) / [Master of Music in Opera](#)
/ [Post-Baccalaureate Diploma](#) / [Professional Studies](#)
[Certificate in Opera](#)

Additional details: Fellowship Programs: [Conducting Fellowship](#) / [String Quartet in Residence](#) / [Community Artist Fellowship program](#)

ONLINE COURSES

[Online courses information](#)

PANDEMIC & SAFETY

✓=Yes ✗=No ○=Under consideration

[Policies & Procedures for this school](#)

Is the school considering:

- *Shifting semester start and/or end dates?*
- *Changes to class and/or ensemble sizes?*
- ✓ *Shifting more coursework online?*
- *Requiring masks for students, faculty, staff?*
- ✓ *Reducing on-campus housing density, if provided?*

Does the school plan to test all for COVID-19 at term start, then periodically? ✗

Does the school plan changes to tuition and/or room & board fees? ○

SOCIAL LINKS



JAM MUSIC LAB UNIVERSITY
PRIVATE UNIVERSITY FOR JAZZ AND POPULAR MUSIC VIENNA

**BACHELOR & MASTER OF ARTS
MUSIC OR MUSIC EDUCATION**
STUDY NOW IN VIENNA - ONLINE & ON SITE!

Study your music! Our university for jazz & popular music offers you an innovative hybrid study program consisting of a combination of e-/online learning and onsite block seminars in Vienna/Austria. Get your bachelor or master's degree in music or music education which opens up international career opportunities in the music industry to you!

Just contact us: www.jammusiclab.com | office@jammusiclab.com | P +43 1 946 68 46. We look forward to hearing from you!
(Timezone CET = UTC +2 | EST +6 | CST +7)

PEPPERDINE UNIVERSITY

2020/21

Music Auditions

NOVEMBER 14, 2020 (EARLY ACTION)
JANUARY 23, 2020
JANUARY 30, 2020

Schedule an audition:
pepperdine.edu/music
fineartsadmissions@pepperdine.edu
310.506.4111

DEPAUW UNIVERSITY

WHAT DISTINGUISHES THIS SCHOOL?

One of the first schools of music, established 1884, Depauw University offers conservatory-style training paired with liberal arts. The four flexible degree programs are undergraduate only with abundant performing opportunities. Special programs offered are the [21st-Century Musician Initiative](#) and Green Guest Artists Series.

LOCATION 600 South Locust Street
Greencastle, IN 46135
UNITED STATES
www.depauw.edu/music/

ADMISSIONS 765-658-4118
georgepalton@depauw.edu

Audition Requirements [Audition Requirements](#)

NOTE: DePauw will provide a pianist and a brief rehearsal free of charge at on-campus auditions.

FINANCIAL INFORMATION

[Tuition & Fees](#) / [Financial Aid & Scholarships](#)

CAREER / POST-GRADUATION ASSISTANCE

The [Hubbard Center for Student Engagement](#) assists all students in post-graduate employment or study. Experiential learning that could include internships, international study, and additional performance opportunities is required.

KEY STATISTICS (college level and above)

125 music students

Music Faculty: 20 full time, 29 adjunct

AREAS OF STUDY

Brass • Jazz Studies & Contemporary Media
• Music Education • Piano • Strings • Vocal Arts/Opera
• Winds & Percussion

DEGREE PROGRAMS

[Undergraduate Programs](#)

Additional details: Bachelor of Music; Bachelor of Music Education; Bachelor of Musical Arts; Bachelor of Arts in Music; Five-Year Bachelor of Music/Bachelor of Arts Double Degree; Minor in Musical Theatre

ADDITIONAL PROGRAMS

(non-matriculating/prep)

[Young Artists Programs](#)

[Community Programs](#)

PANDEMIC & SAFETY

✓=Yes ✗=No ○=Under consideration

[Policies & Procedures for this school](#)

Is the school considering:

✓ *Shifting semester start and/or end dates?*

○ *Changes to class and/or ensemble sizes?*

○ *Shifting more coursework online?*

✓ *Requiring masks for students, faculty, staff?*

✓ *Reducing on-campus housing density, if provided?*

Does the school plan to test all for COVID-19 at term start, then periodically? ○

Does the school plan changes to tuition and/or room & board fees? ○

SOCIAL LINKS



EASTMAN SCHOOL OF MUSIC

University of Rochester

WHAT DISTINGUISHES THIS SCHOOL?

Eastman is dedicated to the highest levels of artistry and scholarship and to the broad education of young musicians within the context of a university. Our students enjoy a challenging but nurturing environment that focuses on artistic excellence while encouraging the pursuit of individual paths and interests.

LOCATION 26 Gibbs Street
Rochester, NY 14604
UNITED STATES
www.esm.rochester.edu/

ADMISSIONS 800-388-9695
admissions@esm.rochester.edu

Audition Requirements [Audition Requirements](#)

FINANCIAL INFORMATION

[Tuition & Fees](#) / [Financial Aid & Scholarships](#)

CAREER / POST-GRADUATION ASSISTANCE

[Career assistance](#)

KEY STATISTICS (college level and above)

900 music students

Music Faculty: 135 full time, 50 adjunct

AREAS OF STUDY

Arts Leadership • Brass • Collaborative Piano
• Composition (Performance) • Conducting • Early Music • Jazz Studies & Contemporary Media • Music Business • Music Education • Music Technology (including Production) • Musicology • Organ • Piano • Strings • Vocal Arts/Opera • Winds & Percussion

DEGREE PROGRAMS

[Undergraduate Programs](#) / [Graduate Programs](#)

ADDITIONAL PROGRAMS

(non-matriculating/prep)

[Institute for Music Leadership](#)

ONLINE COURSES

[Online courses information](#)

PANDEMIC & SAFETY

✓=Yes ✗=No ○=Under consideration

Is the school considering:

✓ *Shifting semester start and/or end dates?*

✓ *Changes to class and/or ensemble sizes?*

✓ *Shifting more coursework online?*

✓ *Requiring masks for students, faculty, staff?*

✓ *Reducing on-campus housing density, if provided?*

Does the school plan to test all for COVID-19 at term start, then periodically? ○

Does the school plan changes to tuition and/or room & board fees? ✗

SOCIAL LINKS



HANNS EISLER SCHOOL OF MUSIC BERLIN

WHAT DISTINGUISHES THIS SCHOOL?

Musical excellence is our leitmotif and only the highest standards prevail. Exceptional musical personalities guarantee the quality of our musical education. We promote talent in its full-scale development—from the attainment of the finest technical precision to being ready to perform on stage.

LOCATION

Hochschule für Musik Hanns Eisler Berlin
Charlottenstr. 55
D-10117 Berlin
GERMANY
www.hfm-berlin.de/en/

ADMISSIONS +49 (0)30 688305-830
studienberatung@hfm-berlin.de

Audition Requirements [Audition Requirements](#)

FINANCIAL INFORMATION

[Tuition & Fees](#) / [Financial Aid & Scholarships](#)

CAREER / POST-GRADUATION ASSISTANCE

[Eisleriana](#)

KEY STATISTICS (college level and above)

500 music students

Music Faculty: **90** full time, **249** adjunct

80 scholarships awarded

AREAS OF STUDY

Brass • Collaborative Piano • Composition (Performance) • Conducting • Piano • Strings • Vocal Arts/Opera • Winds & Percussion • Stage Direction (Opera & Music Theatre) • Chamber Music • Repetiteur • Lied Interpretation for Pianists • Historical and Contemporary Compositional Technique • Electroacoustic Music • Production Dramaturgy for Music Theater

DEGREE PROGRAMS

[Undergraduate Programs](#) / [Graduate Programs](#)

ADDITIONAL PROGRAMS

(non-matriculating/prep)
[Competitions](#)

PANDEMIC & SAFETY

✓=Yes ✗=No ○=Under consideration

[Policies & Procedures for this school](#)

Is the school considering:

- Shifting semester start and/or end dates?*
- Changes to class and/or ensemble sizes?*
- Shifting more coursework online?*
- Requiring masks for students, faculty, staff?*
- n/a Reducing on-campus housing density, if provided?*

Does the school plan to test all for COVID-19 at term start, then periodically?

Does the school plan changes to tuition and/or room & board fees? ✗

SOCIAL LINKS



FLORIDA STATE UNIVERSITY COLLEGE OF MUSIC

WHAT DISTINGUISHES THIS SCHOOL?

FSU is home to one of the largest and most diverse music programs in the country, offering 25 degree programs at the undergraduate level alone. Our students participate in nearly 50 ensembles and perform in more than 500 concerts each year. Our graduates are highly successful beyond the classroom.

LOCATION

122 North Copeland Street
Tallahassee, FL 32306
UNITED STATES
music.fsu.edu/

ADMISSIONS

850-644-6102
musicadmissions@fsu.edu

Audition Requirements [Audition Requirements](#)

FINANCIAL INFORMATION

[Tuition & Fees](#) / [Financial Aid & Scholarships](#)

CAREER / POST-GRADUATION ASSISTANCE

Faculty mentors take an active role in placing and connecting their students to career opportunities, and a Career Liaison from the FSU Career Center works directly with the College of Music. The Allen Music Library sponsors workshops on resumé writing, and career development is a major focus of Music Entrepreneurship classes.

KEY STATISTICS (college level and above)

1050 music students

Music Faculty: **90** full time, **5** adjunct

AREAS OF STUDY

Brass • Collaborative Piano • Composition (Performance) • Conducting • Jazz Studies & Contemporary Media • Music Business • Music Education • Music Technology (including Production) • Musicology • Organ • Piano • Strings • Vocal Arts/Opera • Winds & Percussion • Arts Administration • Commercial Music • Choral Conducting • Wind Conducting • Historical Musicology • Ethnomusicology • Music Therapy • Opera Production • Piano Pedagogy • Piano Technology • Sacred Music

DEGREE PROGRAMS

[Undergraduate Programs](#) / [Graduate Programs](#)

ADDITIONAL PROGRAMS

(non-matriculating/prep)
[Summer Camps](#)

PANDEMIC & SAFETY

✓=Yes ✗=No ○=Under consideration

[Policies & Procedures for this school](#)

Is the school considering:

- ✗ *Shifting semester start and/or end dates?*
- Changes to class and/or ensemble sizes?*
- Shifting more coursework online?*
- ✓ *Requiring masks for students, faculty, staff?*
- ✓ *Reducing on-campus housing density, if provided?*

Does the school plan to test all for COVID-19 at term start, then periodically? ✓

Does the school plan changes to tuition and/or room & board fees? ✗

SOCIAL LINKS



FROST SCHOOL OF MUSIC

University of Miami

WHAT DISTINGUISHES THIS SCHOOL?

The Frost School of Music is a dynamic place where exceptional students and faculty come together to transform the world of music. Brilliant performance, creativity, and scholarship are at our core.

LOCATION 5503 San Amaro Drive
Coral Gables, FL 33146
UNITED STATES
www.frost.miami.edu/

ADMISSIONS 305-284-6168
admission.music@miami.edu

Audition Requirements [Undergraduate](#) / [Graduate](#)

FINANCIAL INFORMATION

[Tuition & Fees](#) / [Financial Aid & Scholarships](#)

CAREER / POST-GRADUATION ASSISTANCE

Frost School of Music dean, faculty, and professional staff provide music career advisement to students during all years of study. The majority of students also enroll in music business courses. The University of Miami's Toppel Career Center is also available for consultation.

KEY STATISTICS (college level and above)

700 music students

Music Faculty: 80 full time, 40 adjunct

AREAS OF STUDY

Arts Leadership • Brass • Collaborative Piano
• Composition (Performance) • Conducting • Early Music • Jazz Studies & Contemporary Media • Music Business • Music Education • Music Technology (including Production) • Musicology • Piano • Strings
• Vocal Arts/Opera • Winds & Percussion • Music Engineering Technology • Arts Presenting and Live Entertainment Management • Music Therapy
• Choral Conducting

DEGREE PROGRAMS

[Undergraduate Programs](#) / [Graduate Programs](#)

ONLINE COURSES

[Online courses information](#)

PANDEMIC & SAFETY

✓=Yes ✗=No ○=Under consideration

Is the school considering:

○ *Shifting semester start and/or end dates?*

○ *Changes to class and/or ensemble sizes?*

○ *Shifting more coursework online?*

○ *Requiring masks for students, faculty, staff?*

✓ *Reducing on-campus housing density, if provided?*

Does the school plan to test all for COVID-19 at term start, then periodically? ○

Does the school plan changes to tuition and/or room & board fees? ○

SOCIAL LINKS



HUGH A. GLAUSER SCHOOL OF MUSIC

Kent State University

WHAT DISTINGUISHES THIS SCHOOL?

Through discovering, integrating, and applying knowledge in a comprehensive and diverse range of Bachelors, Masters, and Doctoral degree programs, we provide a dynamic learning environment that fosters artists, scholars, and teachers who will assume leadership roles in a global society.

LOCATION 1325 Theatre Drive E101
Kent, OH 44242
UNITED STATES
www.kent.edu/music

ADMISSIONS 330-672-2172
schoolofmusic@kent.edu

Audition Requirements [Audition Requirements](#)

FINANCIAL INFORMATION

[Tuition & Fees](#) / [Financial Aid & Scholarships](#)

CAREER / POST-GRADUATION ASSISTANCE

The College of the Arts at Kent State University, of which the School of Music is part, has a designated Career Advisor who serves both current students and alumni.

KEY STATISTICS (college level and above)

350 music students

Music Faculty: 40 full time, 20 adjunct

AREAS OF STUDY

Brass • Collaborative Piano • Composition (Performance) • Conducting • Jazz Studies & Contemporary Media • Music Education • Music Technology (including Production) • Piano • Vocal Arts/Opera • Winds & Percussion • Ethnomusicology
• Music Theory • Strings (no harp)

DEGREE PROGRAMS

[Undergraduate Programs](#) / [Graduate Programs](#)

ONLINE COURSES

[Online courses information](#)

PANDEMIC & SAFETY

✓=Yes ✗=No ○=Under consideration

[Policies & Procedures for this school](#)

Is the school considering:

✗ *Shifting semester start and/or end dates?*

✓ *Changes to class and/or ensemble sizes?*

✓ *Shifting more coursework online?*

✓ *Requiring masks for students, faculty, staff?*

✓ *Reducing on-campus housing density, if provided?*

Does the school plan to test all for COVID-19 at term start, then periodically? ✗

Does the school plan changes to tuition and/or room & board fees? ✗

SOCIAL LINKS



THE GLENN GOULD SCHOOL AT THE ROYAL CONSERVATORY OF MUSIC

WHAT DISTINGUISHES THIS SCHOOL?

The success of our graduates, many of whom now have successful careers as concert and recording artists, is a testament to our focus on performance training. Committed to mentoring, our purposefully small school offers exceptional practice and performance spaces, and 50% more private lesson time with inspiring, well-known faculty.

LOCATION

TELUS Centre for Performance and Learning
273 Bloor Street West
Toronto, ON M5S 1W2
CANADA
www.rcmusic.com/ggs/home

ADMISSIONS

800-462-3815
glenn Gouldschool@rcmusic.ca

[Audition Requirements](#) [Audition Requirements](#)

FINANCIAL INFORMATION

[Tuition & Fees](#) / [Financial Aid & Scholarships](#)

CAREER / POST-GRADUATION ASSISTANCE

The [Rebanks Family Fellowship](#) and International Performance Residency Program is a one-year postgraduate program for artists on the cusp of a professional career.

KEY STATISTICS (college level and above)

130 music students
Music Faculty: 43 full time, 32 adjunct



The Royal Conservatory®

THE GLENN GOULD SCHOOL

AREAS OF STUDY

Brass • Organ • Piano • Strings • Vocal Arts/Opera
• Winds & Percussion

DEGREE PROGRAMS

[Undergraduate Programs](#) / [The Glenn Gould School — Artist Diploma Program](#) (two-year) / [The Rebanks Family Fellowship and International Performance Residency Program](#) (1 year)

Additional details: Bachelor of Music, Performance (Honours)

ADDITIONAL PROGRAMS

(non-matriculating/prep)
[The Phil and Eli Taylor Performance Academy for Young Artists](#) / [The RCM Certificate Program](#)

ONLINE COURSES

[Online courses information](#)

PANDEMIC & SAFETY

✓=Yes ✗=No ○=Under consideration

[Policies & Procedures for this school](#)

Is the school considering:

- ✗ *Shifting semester start and/or end dates?*
- ✓ *Changes to class and/or ensemble sizes?*
- ✓ *Shifting more coursework online?*
- *Requiring masks for students, faculty, staff?*
- n/a *Reducing on-campus housing density, if provided?*

Does the school plan to test all for COVID-19 at term start, then periodically? ○

Does the school plan changes to tuition and/or room & board fees? ✗

SOCIAL LINKS [Twitter](#) [Facebook](#) [YouTube](#) [Instagram](#) [LinkedIn](#)



This is your classroom.

Study at The Glenn Gould School

Based in Toronto, we are a post-secondary institution with a focus on performance. Our school has **world-renowned faculty, outstanding performance spaces** such as Koerner Hall, and a **cap of 130 students**, each of whom receives **90 minutes** of individual studio instruction weekly.

The Glenn Gould School offers degrees and diplomas for three levels of study: Bachelor of Music, Performance (Honours)*, the Artist Diploma (for post-Bachelor studies), and The Rebanks Family Fellowship and International Performance Residency (for post-graduate studies).

Programs of Study

The Temerty Orchestral Program
working with noted conductors such as Tania Miller and Gabor Takács-Nagy

The Ichnatowycz Piano Program
under the leadership of James Anagnoson, Dean, includes distinguished artists and teachers John O'Connor and John Perry

Vocal Studies and the Price Opera Program
with Adrienne Pieczonka, Chair



rcmusic.com/ggs



* This institution has been granted a consent by the Minister of Training, Colleges and Universities to offer this program for a seven-year term starting October 12, 2017. Prospective students are responsible for satisfying themselves that the program and the degree will be appropriate to their needs (e.g., acceptable to potential employers, professional licensing bodies or other educational institutions.)

THE UNIVERSITY
OF TAMPA



Innovate the Future of Tradition

- New state-of-the-art facility opening Fall 2020
- Residential campus in a growing, vibrant city
- Focus on experiential, undergraduate education
- Music programs in performance, theatre, education and technology

Learn more at ut.edu/music.

GUILDHALL SCHOOL OF MUSIC & DRAMA

WHAT DISTINGUISHES THIS SCHOOL?

Guildhall School is one of the world's leading conservatories, highly regarded in the profession for intensive, dedicated training taught by renowned international teaching staff and through partnerships with the Barbican, London Symphony Orchestra, the BBC Symphony Orchestra, the Royal Opera House, and the Academy of Ancient Music.

LOCATION Silk Street, Barbican
London EC2Y 8DT
UNITED KINGDOM
www.gsmd.ac.uk/

ADMISSIONS +44 (0)20 7382 7144
music@gsmd.ac.uk

Audition Requirements
[Undergraduate](#) / [Postgraduate](#)

FINANCIAL INFORMATION
[Tuition & Fees](#) / [Financial Aid & Scholarships](#)

CAREER / POST-GRADUATION ASSISTANCE
Training combines academic rigor and artistic skill with a strong professional focus. All of our programs are closely engaged with the professions, through talks, workshops, mentoring, master classes, and performance collaborations.

KEY STATISTICS (college level and above)
738 music students
Music Faculty: 5 full time, 629 adjunct

AREAS OF STUDY

Brass • Collaborative Piano • Composition (Performance) • Conducting • Early Music • Jazz Studies & Contemporary Media • Music Business • Music Education • Musicology • Organ • Piano • Strings • Vocal Arts/Opera • Winds & Percussion

DEGREE PROGRAMS

[Undergraduate Programs](#) / [Graduate Programs](#)

Additional details: Bachelor of Music Electronic Music; Master of Music/Master of Performance in Performance (Guildhall Artist Masters): Orchestral Artistry in association with the London Symphony Orchestra; MA in Music Therapy; MA in Opera Making & Writing in association with the Royal Opera House; PG Cert Performance Teaching; Research Degrees

ADDITIONAL PROGRAMS
(non-matriculating/prep)
[Youth & Adult Learning](#)

PANDEMIC & SAFETY

✓=Yes X=No ○=Under consideration

Is the school considering:

- Shifting semester start and/or end dates?
- Changes to class and/or ensemble sizes?
- Shifting more coursework online?
- Requiring masks for students, faculty, staff?
- Reducing on-campus housing density, if provided?

Does the school plan to test all for COVID-19 at term start, then periodically?

Does the school plan changes to tuition and/or room & board fees?

SOCIAL LINKS



THE HARTT SCHOOL

University of Hartford

WHAT DISTINGUISHES THIS SCHOOL?

The Hartt School is a truly collaborative environment where faculty embrace that success takes on endless forms. They get to know each student and guide them toward the future meant just for them.

LOCATION 200 Bloomfield Avenue
West Hartford, CT 06117
UNITED STATES
www.hartford.edu/hartt

ADMISSIONS 860-768-4465
harttadm@hartford.edu

Audition Requirements [Audition Requirements](#)

FINANCIAL INFORMATION

[Tuition & Fees](#) / [Financial Aid & Scholarships](#)

CAREER / POST-GRADUATION ASSISTANCE

All degree programs at Hartt include career preparation coursework and undergraduate performance majors can choose a minor in arts management. The University of Hartford's career services office has a career counselor dedicated to the arts and resources to assist Hartt students in beginning their careers.

KEY STATISTICS (college level and above)

400 music students

Music Faculty: **47** full time, **80** adjunct

1920 **100** 2020
THE HARTT SCHOOL
MUSIC • DANCE • THEATRE

AREAS OF STUDY

Arts Leadership • Brass • Composition (Performance) • Conducting • Early Music • Jazz Studies & Contemporary Media • Music Business • Music Education • Music Technology (including Production) • Musicology • Piano • Strings • Vocal Arts/Opera • Winds & Percussion • Music Management • Acoustical Engineering and Music • Performing Arts Management • Music Theatre • Actor Training • Stage Management • Technical Theater • Ballet Pedagogy • Dance Performance

DEGREE PROGRAMS

[Undergraduate Programs](#) / [Graduate Programs](#)

ADDITIONAL PROGRAMS

(non-matriculating/prep)

[Hartt School Community Division](#)

PANDEMIC & SAFETY

✓=Yes ✗=No ○=Under consideration

[Policies & Procedures for this school](#)

Is the school considering:

✗ *Shifting semester start and/or end dates?*

✓ *Changes to class and/or ensemble sizes?*

✓ *Shifting more coursework online?*

✓ *Requiring masks for students, faculty, staff?*

✓ *Reducing on-campus housing density, if provided?*

Does the school plan to test all for COVID-19 at term start, then periodically? ✓

Does the school plan changes to tuition and/or room & board fees? ○

SOCIAL LINKS



RISE CONFIDENTLY. EMERGE READY.



AT THE HARTT SCHOOL, we think the best way to learn and perfect your craft is by doing. That's why we put on more than 400 performances, recitals, lectures, and master classes each year. Through diverse coursework and close mentoring relationships with faculty, you can make your passion your profession.

WHY HARTT?

- Mentorship from world-class faculty
- Master classes with cutting-edge ensembles
- Classes tailored especially for you
- Centrally located between Boston and New York City

UNIVERSITY OF HARTFORD

THE HARTT SCHOOL

hartford.edu/harttperformance

ICLASSICAL ACADEMY

WHAT DISTINGUISHES THIS SCHOOL?

Online Classical Music Academy offers more than 550 master classes and courses for violin, cello, piano, conducting, guitar, trumpet, music career and voice. Learn from teachers of different schools of music education; Russian, French, German, Italian and American, compare techniques and apply what serves you best.

LOCATION Rue de la Tour 10
3963 Crans-Montana
SWITZERLAND
iclassical-academy.com/

ADMISSIONS +39 3473319474
meira@iclassical-academy.com

FINANCIAL INFORMATION

[Tuition & Fees](#)

CAREER / POST-GRADUATION ASSISTANCE
[Career assistance](#)

KEY STATISTICS (college level and above)
2500 music students
Music Faculty: 5 full time, 65 adjunct
25 scholarships awarded

AREAS OF STUDY

Arts Leadership • Brass • Composition (Performance)
• Conducting • Music Business • Music Education
• Music Technology (including Production) • Piano
• Strings • Vocal Arts/Opera • Winds & Percussion

ICLASSICAL ACADEMY (cont'd)

ADDITIONAL PROGRAMS

(non-matriculating/prep)

[Miriam Fried – Bach Sonatas and Partitas: Online Violin Course /](#)

[The Musical Jewels—Courses to unlock and widen your theoretical and practical knowledge /](#)
[Collection of Courses to Boost Technical and Music-Related Skills](#)

ONLINE COURSES

[Online courses information](#)

PANDEMIC & SAFETY

✓=Yes ✗=No ○=Under consideration

Is the school considering:

✗ *Shifting semester start and/or end dates?*

✗ *Changes to class and/or ensemble sizes?*

✓ *Shifting more coursework online?*

✗ *Requiring masks for students, faculty, staff?*

n/a *Reducing on-campus housing density, if provided?*

Does the school plan to test all for COVID-19 at term start, then periodically? ✗

Does the school plan changes to tuition and/or room & board fees? ○

SOCIAL LINKS



The Shepherd School of Music at Rice

The Shepherd School of Music at Rice University offers preprofessional training for musicians, combining the conservatory experience with the educational excellence of a renowned private university. Our illustrious faculty of artist-teachers dedicate themselves to the special talents and skills of each individual student.

Robert Yekovich, Dean, The Shepherd School of Music

Faculty

VIOLIN

Paul Kantor
Cho-Liang Lin
Kathleen Winkler

VIOLA

James Dunham
Ivo-Jan van der Werff

CELLO

Norman Fischer
Desmond Hoebig
Brinton Averil Smith

DOUBLE BASS

Paul Ellison
Timothy Pitts

FLUTE

Leone Buyse

OBOE

Robert Atherholt

CLARINET

Richie Hawley

BASSOON

Benjamin Kamins

HORN

William VerMeulen

TRUMPET

Barbara Butler
Charlie Geyer

TROMBONE

Allen Barnhill

TUBA

David Kirk

PERCUSSION

Matthew Strauss

HARP

Paula Page

PIANO

Brian Connelly

Jeanne Kierman

FISCHER

Sohyoung Park

Jon Kimura Parker

Robert Roux

Virginia Weckstrom

ORGAN

Ken Cowan

VOICE

Stephen King

Robin Rice

Ana Maria Martínez

(Fall 2021)

Nova Thomas

OPERA STUDIES

Debra Dickinson

Susan Lorette Dunn

Miah Im

VOCAL COACHING

Bethany Self

Karen Roethlisberger

Verm

CONDUCTING

Thomas Jaber

Larry Rachleff

COMPOSITION and THEORY

Karim Al-Zand

Damian Blättler

Anthony Brandt

Shih-Hui Chen

Arthur Gottschalk

Pierre Jalbert

Richard Lavenda

Kurt Stallmann

MUSICOLOGY

Gregory Barnett

David Ferris

Alexandra Kieffer

Peter Loewen

Danielle Ward-Griffin

ORCHESTRAL and CHAMBER REPERTOIRE

Joan DerHovsepian

Eric Halen

Thomas LeGrand

Janet Rarick

Michael Webster

LECTURERS

Mario Aschauer

Karol Bennett

Rachel Buchman

Rick Erickson

Terry Gaschen

Mary Greitzer

Jerry Hou

Peter Shaw

Robert Simpson

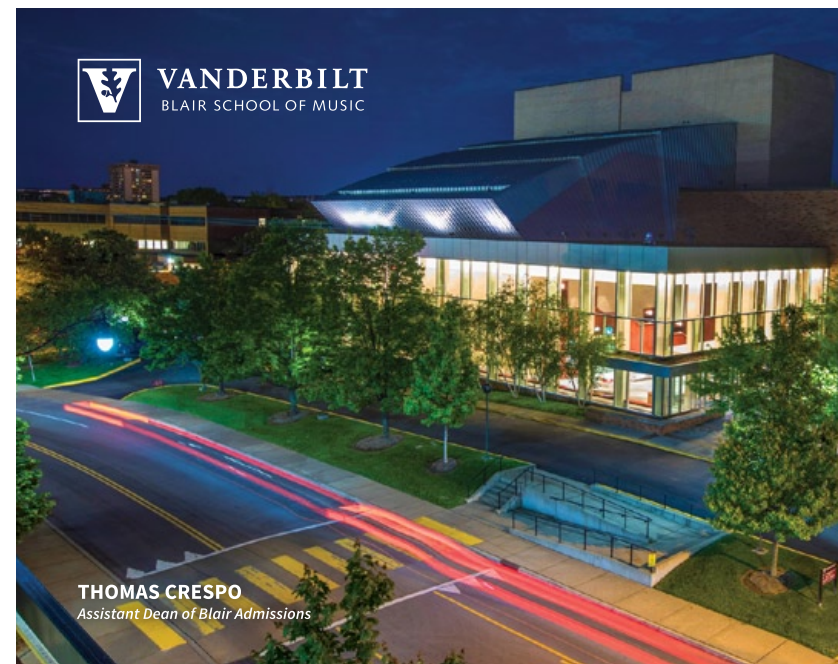
Christopher Turbessi

Chapman Welch



RICE

The Shepherd School of Music
Rice University, Houston, TX
music.rice.edu



THOMAS CRESPO
Assistant Dean of Blair Admissions

VISIT

BLAIR
SCHOOL
OF MUSIC

Nashville, Tennessee

blair.vanderbilt.edu

(615) 322-6181

blair.inquiries@vanderbilt.edu

VIRTUAL VISIT OPPORTUNITIES:
vu.edu/visitblair

INDIANA UNIVERSITY JACOBS SCHOOL OF MUSIC

Indiana University

WHAT DISTINGUISHES THIS SCHOOL?

The more than 1,500 students who study at the Jacobs School of Music benefit from the intensity and focus of a conservatory combined with the broad academic offerings of a major university. The breadth and number of performance opportunities are unparalleled in college music study.

LOCATION 1201 East Third Street
Bloomington, IN 47405
UNITED STATES
music.indiana.edu/

ADMISSIONS 812-855-7998
musicadm@indiana.edu

Audition Requirements [Audition Requirements](#)

All auditions and interviews are held on the Bloomington campus. Only those applications received by the deadlines will be guaranteed an opportunity to audition.

FINANCIAL INFORMATION

[Tuition & Fees](#) / [Financial Aid & Scholarships](#)

CAREER / POST-GRADUATION ASSISTANCE

[Career assistance](#)

The OECD provides career advising, multiple online tools, an alumni mentorship program, departmental career days, mentorship, and digital publications. An undergraduate Certificate in Music Entrepreneurship (15 credits) is offered by the OECD in partnership with the Kelley School of Business.



JACOBS SCHOOL OF MUSIC
Indiana University Bloomington

KEY STATISTICS (college level and above)

1600 music students
Music Faculty: 175 full time, 30 adjunct

AREAS OF STUDY

Brass • Collaborative Piano • Composition (Performance) • Conducting • Early Music • Jazz Studies & Contemporary Media • Music Business • Music Education • Music Technology (including Production) • Musicology • Organ • Piano • Strings • Vocal Arts/Opera • Winds & Percussion • Audio Engineering and Sound Production • Ballet • Chamber and Collaborative Music • Choral Conducting • Music Entrepreneurship

DEGREE PROGRAMS

[Undergraduate Programs](#) / [Graduate Programs](#)

ONLINE COURSES

[Online courses information](#)

PANDEMIC & SAFETY

✓=Yes ✗=No ○=Under consideration

[Policies & Procedures for this school](#)

Is the school considering:

- ✓ *Shifting semester start and/or end dates?*
- *Changes to class and/or ensemble sizes?*
- *Shifting more coursework online?*
- ✓ *Requiring masks for students, faculty, staff?*
- ✓ *Reducing on-campus housing density, if provided?*

Does the school plan to test all for COVID-19 at term start, then periodically? ○

Does the school plan changes to tuition and/or room & board fees? ○

SOCIAL LINKS



Ψ JACOBS SCHOOL OF MUSIC
Indiana University Bloomington

16,000+
TALENTED
ALUMNI

175
WORLD-CLASS
FULL-TIME
FACULTY

75%
OF STUDENTS
RECEIVE
SCHOLARSHIPS

APPLICATION DEADLINES

Nov. 1, 2020 - Undergraduate
Dec. 1, 2020 - Graduate

Learn more at music.indiana.edu.



UCLA Herb Alpert
School of Music



THIS IS UCLA MUSIC

ETHNOMUSICOLOGY | GLOBAL JAZZ STUDIES | MUSIC | MUSICOLOGY | MUSIC INDUSTRY

The UCLA Herb Alpert School of Music is at the nexus of performance and scholarship. Offering programs in Ethnomusicology, Global Jazz Studies, Music, Musicology, and Music Industry, we invite the exploration of music in all of its diverse forms.

Study with renowned faculty in an intimate environment housed within a top research institution and discover the creative and professional opportunities that a global cultural capital like Los Angeles can provide.

SCHOOLOFMUSIC.UCLA.EDU



JAM MUSIC LAB UNIVERSITY

WHAT DISTINGUISHES THIS SCHOOL?

We are a pioneering university for jazz & popular music providing BA and MA degrees in a hybrid learning model consisting of online and on-site courses. We focus on our students' talents and creativity, no matter if they strive to be a composer, instrumentalist, singer, songwriter, producer, or educator.

LOCATION Gasometer C—Guglgasse 12
1110 Vienna
AUSTRIA
www.jammusiclab.com/

ADMISSIONS +43 19466846
office@jammusiclab.com

Audition Requirements [Audition Requirements](#)

FINANCIAL INFORMATION
[Tuition & Fees](#) / [Financial Aid & Scholarships](#)

CAREER / POST-GRADUATION ASSISTANCE
We offer career aid to our students through our own artist agency and through external partnerships with venues, promoters, and broadcasters.

KEY STATISTICS (college level and above)
150 music students
Music Faculty: 5 full time, 50 adjunct

AREAS OF STUDY

Composition (Performance) • Jazz Studies & Contemporary Media • Music Education • Piano • Strings • Vocal Arts/Opera • Winds & Percussion • Popular Music • Vocal Arts Jazz / Pop

DEGREE PROGRAMS

[Bachelor of Arts in Music](#) / [Bachelor of Arts in Music Education](#) / [Master of Arts in Music](#) / [Master of Arts in Music Education](#)

Additional details: Bachelor of Arts in Music; Bachelor of Arts in Music Education; Master of Arts in Music; Master of Arts in Music Education

ONLINE COURSES

[Online courses information](#)

PANDEMIC & SAFETY

✓=Yes ✗=No ○=Under consideration
[Policies & Procedures for this school](#)

Is the school considering:

- ✗ Shifting semester start and/or end dates?
- ✓ Changes to class and/or ensemble sizes?
- ✓ Shifting more coursework online?
- Requiring masks for students, faculty, staff?
- n/a Reducing on-campus housing density, if provided?

Does the school plan to test all for COVID-19 at term start, then periodically? ✗

Does the school plan changes to tuition and/or room & board fees? ○

SOCIAL LINKS



THE JUILLIARD SCHOOL

Columbia & Barnard Colleges

WHAT DISTINGUISHES THIS SCHOOL?

Since 1905 Juilliard has educated the world's foremost musicians, then dancers & actors; its Lincoln Center campus is a launching ground for artistic achievement, with a world-renowned faculty.

LOCATION 60 Lincoln Center Plaza
New York, NY 10023
UNITED STATES
www.juilliard.edu

ADMISSIONS 212-799-5000 x223
musicadmissions@juilliard.edu

Audition Requirements [Audition Requirements](#)

FINANCIAL INFORMATION

[Tuition & Fees](#) / [Financial Aid & Scholarships](#)

CAREER / POST-GRADUATION ASSISTANCE

[The Alan D. Marks Center for Career Services and Entrepreneurship](#) at Juilliard provides a comprehensive integration of career services programs and entrepreneurial strategies into the ecosystem of the Juilliard community, preparing graduates across all disciplines to be confident professionals at the intersection of creativity, technology, and business.

Juilliard

KEY STATISTICS (college level and above)
674 music students
Music Faculty: 132 full time, 173 adjunct

AREAS OF STUDY

Brass • Collaborative Piano • Composition (Performance) • Conducting • Early Music • Jazz Studies & Contemporary Media • Organ • Piano • Strings • Vocal Arts/Opera • Winds & Percussion • Dance • Acting • Playwriting

DEGREE PROGRAMS

[Undergraduate Programs](#) / [Graduate Programs](#)

ADDITIONAL PROGRAMS

(non-matriculating/prep)
[Cross-registration programs for classes at Barnard College, Columbia University or The Juilliard School / Preparatory Division](#)

PANDEMIC & SAFETY

✓=Yes ✗=No ○=Under consideration
[Policies & Procedures for this school](#)

Is the school considering:

- ✓ *Shifting semester start and/or end dates?*
- ✓ *Changes to class and/or ensemble sizes?*
- ✓ *Shifting more coursework online?*
- ✓ *Requiring masks for students, faculty, staff?*
- ✓ *Reducing on-campus housing density, if provided?*

Does the school plan to test all for COVID-19 at term start, then periodically? ○

Does the school plan changes to tuition and/or room & board fees? ✗

SOCIAL LINKS [Twitter](#) [Facebook](#) [YouTube](#) [Instagram](#) [Pinterest](#) [LinkedIn](#)



Transforming passion into artistry

Undergraduate and graduate degrees and diplomas

World-renowned faculty and guest artists

Performance opportunities in New York City and abroad

APPLY BY DECEMBER 1

juilliard.edu

Juilliard

LAMONT SCHOOL OF MUSIC

University of Denver

WHAT DISTINGUISHES THIS SCHOOL?

Lamont is a premier music performance school within an internationally known university surrounded by a vibrant arts city. We are big enough to have a symphony orchestra, jazz orchestra, opera, and many other multi-genre ensembles, but small enough that our students receive an abundance of individual attention and performing opportunities.

LOCATION 2344 East Iliff Avenue
Denver, CO 80208
liberalarts.du.edu/lamont

ADMISSIONS 303-871-6973
musicadmission@du.edu

Audition Requirements [Audition Requirements](#)

FINANCIAL INFORMATION

[Tuition & Fees](#) / [Financial Aid & Scholarships](#)

CAREER / POST-GRADUATION ASSISTANCE

[Career Services](#) / [Resources for DU alumni, parents and friends](#)

KEY STATISTICS (college level and above)

300 music students

Music Faculty: 32 full time, 40 adjunct

LAMONT SCHOOL OF MUSIC (cont'd)

University of Denver

AREAS OF STUDY

Brass • Composition (Performance) • Conducting
• Jazz Studies & Contemporary Media • Music
Technology (including Production) • Musicology
• Organ • Piano • Strings • Vocal Arts/Opera • Winds &
Percussion • Music Theory • Piano Pedagogy • Suzuki
Pedagogy (violin & cello)

DEGREE PROGRAMS

[Undergraduate Programs](#) / [Graduate Programs](#)

ONLINE COURSES

[Online courses information](#)

PANDEMIC & SAFETY

✓=Yes ✗=No ○=Under consideration

[Policies & Procedures for this school](#)

Is the school considering:

✗ *Shifting semester start and/or end dates?*

✓ *Changes to class and/or ensemble sizes?*

✓ *Shifting more coursework online?*

✓ *Requiring masks for students, faculty, staff?*

✓ *Reducing on-campus housing density, if provided?*

Does the school plan to test all for COVID-19 at term start, then periodically? ✓

Does the school plan changes to tuition and/or room & board fees? ✗

SOCIAL LINKS    

SAN FRANCISCO
CONSERVATORY OF MUSIC

Launching careers in a changing world.

PROGRAMS OF STUDY

Bachelor of Music
Master of Music
Artist Certificate in Chamber Music
Professional Studies Diploma
Postgraduate Diploma in Vocal Performance



CRANE
Julia Crane
The Crane School of Music - SUNY Potsdam

DEGREE OPTIONS

Bachelor of Music Degrees in
Music Education, Performance,
Composition, Music Theory,
Music History and Music Business
Bachelor of Arts Degree in Music
Master of Music Degrees in
Music Education and Performance

potsdam.edu/crane



LONGY SCHOOL OF MUSIC

Bard College

WHAT DISTINGUISHES THIS SCHOOL?

Longy's innovative Catalyst Curriculum compels graduate students to explore their artistry and to take risks to build their skills, guided by a world-class faculty that encourages them to push their artistic presentation beyond the proscenium model. Longy prepares musicians to make a difference in the world with a social imperative that is at the core of the School's curriculum. Breaking down traditional conservatory constraints, Longy students learn to lead meaningful lives in music through project-based courses and performances alongside professional partners.

LOCATION 27 Garden Street
Cambridge, MA 02138
UNITED STATES
longy.edu/

ADMISSIONS 617-876-0956
admissions@longy.edu

Audition Requirements [Audition Requirements](#)

FINANCIAL INFORMATION
[Tuition & Fees](#) / [Financial Aid & Scholarships](#)

CAREER / POST-GRADUATION ASSISTANCE
From their first days at Longy, students become a Boston musician, performing professionally with faculty on concert stages around the city. Networking and performing opportunities abound. Students can receive Teaching Assistantships or Graduate Fellowships, which reduce tuition by up to \$10,000 per year. There are also numerous employment opportunities on campus.

LONGY

School of Music of Bard College

KEY STATISTICS (college level and above)

260 music students
Music Faculty: 0 full time, 127 adjunct
251 scholarships awarded

AREAS OF STUDY

Brass • Collaborative Piano • Composition (Performance) • Conducting • Early Music • Jazz Studies & Contemporary Media • Music Education • Organ • Piano • Strings • Vocal Arts/Opera • Winds & Percussion • Guitar • Chamber Music • Historical Performance • Dalcroze Eurhythmics • Certified Music Practitioner • Theory

DEGREE PROGRAMS

[Undergraduate Programs](#) / [Graduate Programs](#)

PANDEMIC & SAFETY

✓=Yes ✗=No ○=Under consideration
[Policies & Procedures for this school](#)

Is the school considering:

- ✓ *Shifting semester start and/or end dates?*
- ✓ *Changes to class and/or ensemble sizes?*
- ✓ *Shifting more coursework online?*
- ✓ *Requiring masks for students, faculty, staff?*
- n/a *Reducing on-campus housing density, if provided?*

Does the school plan to test all for COVID-19 at term start, then periodically? ○

Does the school plan changes to tuition and/or room & board fees? ✓

SOCIAL LINKS [Twitter](#) [Facebook](#) [YouTube](#) [Instagram](#)



BECOME THE MUSICIAN THE WORLD NEEDS YOU TO BE

At Longy, we prepare students to become exceptional musicians who can engage new audiences; teach anyone, anywhere; and use artistry to change lives in communities around the world.

Apply now at Longy.edu

LONGY
School of Music of Bard College

BOSTON & LOS ANGELES

1864
UNIVERSITY of DENVER

LAMONT SCHOOL of MUSIC

SCHOLARSHIPS AVAILABLE!
APPLY BY
JANUARY 15

Areas of Study	Programs Offered
Brass	Bachelor of Music
Conducting	Bachelor of Arts
Composition	Minor in Music
Guitar	Minor in Ethnomusicology
Harp	Master of Music
Jazz	Master of Arts
Keyboard	Artist Diploma
Music Theory	Certificates
Musicology	
Percussion	
Piano Pedagogy	
Recording & Production	
Strings	
Suzuki Pedagogy	
Voice	
Woodwinds	

www.du.edu/lamont

LYNN UNIVERSITY CONSERVATORY OF MUSIC

Lynn University

WHAT DISTINGUISHES THIS SCHOOL?

Lynn offers world-class faculty and full-tuition scholarships to all enrolled conservatory students. Room and board scholarships also available.

LOCATION

3601 North Military Trail
Boca Raton, FL 33431
UNITED STATES

www.lynn.edu/academics/colleges/conservatory

ADMISSIONS 561-237-7804

music@lynn.edu

Audition Requirements [Audition Requirements](#)

FINANCIAL INFORMATION

[Tuition & Fees](#)

CAREER / POST-GRADUATION ASSISTANCE

Lynn's comprehensive career preparation includes: one-on-one career counseling • résumé writing and coaching • tips on employment research • personality and skill assessments • informational and mock interviews • professional networking • entrepreneurial seminars.

KEY STATISTICS (college level and above)

110 music students

Music Faculty: **12** full time, **13** adjunct

110 scholarships awarded

AREAS OF STUDY

Brass • Collaborative Piano • Composition (Performance) • Organ • Piano • Strings • Winds & Percussion • Harp • Percussion

Additional details: Instrumental Collaborative Piano not available for Undergraduate Bachelor of Music; Undergraduate Bachelor of Music; Graduate Master of Music; Graduate Certificate Professional Performance

PANDEMIC & SAFETY

✓=Yes ✗=No ○=Under consideration

[Policies & Procedures for this school](#)

Is the school considering:

- ✗ *Shifting semester start and/or end dates?*
- ✓ *Changes to class and/or ensemble sizes?*
- ✓ *Shifting more coursework online?*
- ✓ *Requiring masks for students, faculty, staff?*
- ✓ *Reducing on-campus housing density, if provided?*

Does the school plan to test all for COVID-19 at term start, then periodically? ✗

Does the school plan changes to tuition and/or room & board fees? ✗

SOCIAL LINKS



MANHATTAN SCHOOL OF MUSIC

WHAT DISTINGUISHES THIS SCHOOL?

Manhattan School of Music takes full advantage of New York's abundant learning and performance opportunities, preparing highly talented students for careers as passionate performers and composers and to be imaginative, effective leaders in the arts.

LOCATION 130 Claremont Avenue
New York, NY 10027
UNITED STATES
www.msmnyc.edu

ADMISSIONS 917-493-4436
admission@msmnyc.edu

Audition Requirements [Audition Requirements](#)

All applicants who have completed their online application and passed prescreening (if applicable) must audition in order to be admitted to MSM.

FINANCIAL INFORMATION

[Tuition & Fees](#) / [Financial Aid & Scholarships](#)

CAREER / POST-GRADUATION ASSISTANCE

MSM's [Center for Music Entrepreneurship \(CME\)](#) provides professional career coaching in a supportive environment, including individual sessions. Flexible internship opportunities are made available for elective credits with leading NYC-area cultural institutions.

M Manhattan School of Music

KEY STATISTICS (college level and above)

965 music students
Music Faculty: 93 full time, **242** adjunct

AREAS OF STUDY

Brass • Collaborative Piano • Composition (Performance) • Conducting • Jazz Studies & Contemporary Media • Organ • Piano • Strings • Vocal Arts/Opera • Winds & Percussion • Jazz Arts

DEGREE PROGRAMS

[Bachelor of Music](#) / [Graduate Programs](#)

Additional details: Musical Theatre (BM only);
Orchestral Performance (MM, PS only); Classical
Contemporary Performance (MM, PS only)

ADDITIONAL PROGRAMS

(non-matriculating/prep)
[Unique learning opportunities beyond the general academic curriculum](#)

PANDEMIC & SAFETY

✓=Yes ✗=No ○=Under consideration

[Policies & Procedures for this school](#)

Is the school considering:

- ✓ *Shifting semester start and/or end dates?*
- ✓ *Changes to class and/or ensemble sizes?*
- ✓ *Shifting more coursework online?*
- ✓ *Requiring masks for students, faculty, staff?*
- ✓ *Reducing on-campus housing density, if provided?*

Does the school plan to test all for COVID-19 at term start, then periodically? ✓

Does the school plan changes to tuition and/or room & board fees? ✗

SOCIAL LINKS



it all happens here.

MSMNYC.EDU

Office of Admissions and Financial Aid
Manhattan School of Music
130 Claremont Avenue, New York, NY 10027
917-493-4436 admission@msmnyc.edu

MANNES SCHOOL OF MUSIC

The New School

WHAT DISTINGUISHES THIS SCHOOL?

The curriculum at Mannes breathes new life into traditional conservatory education, offering students rigorous training together with unique opportunities to grow as artists through cross-disciplinary collaboration, entrepreneurial innovation, and social engagement.

LOCATION 55 West 13th Street
New York, NY 10011
UNITED STATES
www.newschool.edu/mannes/

ADMISSIONS 212-580-0210 x4862
performingarts@newschool.edu

Audition Requirements [Audition Requirements](#)

FINANCIAL INFORMATION

[Tuition & Fees](#) / [Financial Aid & Scholarships](#)

CAREER / POST-GRADUATION ASSISTANCE

At Mannes, students receive exceptional preparation for careers in music by engaging in a highly progressive curriculum. They can participate in partnerships with top-tier arts organizations in the Northeast. The New School's Career Services office is also available to them.

KEY STATISTICS (college level and above)

460 music students
Music Faculty: 12 full time, 238 adjunct

AREAS OF STUDY

Arts Leadership • Brass • Collaborative Piano
• Composition (Performance) • Conducting • Jazz Studies & Contemporary Media • Music Technology (including Production) • Organ • Piano • Strings
• Vocal Arts/Opera • Winds & Percussion

DEGREE PROGRAMS

[Undergraduate Programs](#) / [Graduate Programs](#)

Additional details: MA Arts Management and Entrepreneurship, Master of Music Performer-Composer

PANDEMIC & SAFETY

✓=Yes ✗=No ○=Under consideration
[Policies & Procedures for this school](#)

Is the school considering:

- ✗ *Shifting semester start and/or end dates?*
- ✓ *Changes to class and/or ensemble sizes?*
- ✓ *Shifting more coursework online?*
- *Requiring masks for students, faculty, staff?*
- ✓ *Reducing on-campus housing density, if provided?*

Does the school plan to test all for COVID-19 at term start, then periodically? ○

Does the school plan changes to tuition and/or room & board fees? ○

SOCIAL LINKS    

MASON GROSS SCHOOL OF THE ARTS

Rutgers University

For current information, please [see this school's website](#).

ROBERT MCDUFFIE CENTER FOR STRINGS

Mercer University

WHAT DISTINGUISHES THIS SCHOOL?

Founded as a special institute within Mercer University's Townsend School of Music, the McDuffie Center for Strings is limited to 26 students: 12 violinists, six violists, six cellists and two bassists. All accepted students receive a full-tuition scholarship to study with an unparalleled faculty of international performing artists.

LOCATION 1501 Mercer University Drive
Macon, GA 31207
UNITED STATES
mcduffie.mercer.edu/

ADMISSIONS 478-301-2886
mcduffiecenter@mercer.edu

Audition Requirements [Audition Requirements](#)

Two contrasting movements of solo Bach; a concerto movement; an etude/caprice of your choice.

FINANCIAL INFORMATION

[Tuition & Fees](#)

CAREER / POST-GRADUATION ASSISTANCE

[Career assistance](#)

KEY STATISTICS (college level and above)

26 music students
Music Faculty: 13 full time, 0 adjunct
27 scholarships awarded

AREAS OF STUDY

Strings • Strings only: violin, viola, cello and bass

DEGREE PROGRAMS

[Undergraduate Programs](#)

Additional details: Bachelor of Music and Artist Diploma

PANDEMIC & SAFETY

✓=Yes ✗=No ○=Under consideration

Is the school considering:

- ✗ *Shifting semester start and/or end dates?*
- *Changes to class and/or ensemble sizes?*
- *Shifting more coursework online?*
- ✓ *Requiring masks for students, faculty, staff?*
- ✓ *Reducing on-campus housing density, if provided?*

Does the school plan to test all for COVID-19 at term start, then periodically? ✓

Does the school plan changes to tuition and/or room & board fees? ○

SOCIAL LINKS 

NEW ENGLAND CONSERVATORY

WHAT DISTINGUISHES THIS SCHOOL?

NEC is a premier conservatory that values exploration and collaboration. Students are mentored by a devoted faculty of esteemed artist-teachers and scholars. Alumni fill orchestra chairs, concert halls, jazz clubs, recording studios, and arts management positions worldwide.

LOCATION 290 Huntington Avenue
Boston, MA 02115
UNITED STATES
necmusic.edu/

ADMISSIONS 617-585-1101
admission@necmusic.edu

Audition Requirements [Audition Requirements](#)

FINANCIAL INFORMATION

[Tuition & Fees](#) / [Financial Aid & Scholarships](#)

CAREER / POST-GRADUATION ASSISTANCE

NEC has reinvented how we equip young musicians to thrive amidst the challenges they find after graduation. Our mission has not changed—we educate and nurture exceptionally gifted musicians to perform at the highest levels of accomplishment. But today, performance excellence is the starting point. Musicians must be more than virtuosos; they must be their own businesses.

KEY STATISTICS (college level and above)

750 music students
Music Faculty: **113** full time, **313** adjunct

AREAS OF STUDY

Brass • Collaborative Piano • Composition (Performance) • Conducting • Early Music • Jazz Studies & Contemporary Media • Musicology • Organ • Piano • Strings • Vocal Arts/Opera • Winds & Percussion • Collaborative Piano • Contemporary Improvisation • Piano Trio Program • String Quartet Program

DEGREE PROGRAMS

[Undergraduate Programs](#) / [Graduate Programs](#)

PANDEMIC & SAFETY

✓=Yes ✗=No ○=Under consideration

[Policies & Procedures for this school](#)

Is the school considering:

- Shifting semester start and/or end dates?
- Changes to class and/or ensemble sizes?
- Shifting more coursework online?
- ✓ Requiring masks for students, faculty, staff?
- ✓ Reducing on-campus housing density, if provided?

Does the school plan to test all for COVID-19 at term start, then periodically?

Does the school plan changes to tuition and/or room & board fees? ✗

SOCIAL LINKS



NEW WORLD SYMPHONY, AMERICA'S ORCHESTRAL ACADEMY

WHAT DISTINGUISHES THIS SCHOOL?

A laboratory for the way music is taught, presented, and experienced, the New World Symphony consists of 87 musicians who are granted fellowships lasting up to three years. The fellowship offers in-depth exposure to traditional & modern repertoire, professional development training, and personalized experiences working with leading guest faculty.

LOCATION New World Center
500 17th Street
Miami Beach, FL 33139
UNITED STATES
www.nws.edu/

ADMISSIONS 305-428-6713
admissions@nws.edu

Audition Requirements [Audition Requirements](#)

FINANCIAL INFORMATION

[Tuition & Fees](#) / [Financial Aid & Scholarships](#)

CAREER / POST-GRADUATION ASSISTANCE

An intensive four-day audition preparation seminar, involving visiting coaches from major orchestras, is held each year. In addition, Fellows organize monthly mock auditions with the occasional participation of guest conductors and coaches. NWS also presents an annual series of workshops with psychologist Dr. Noa Kageyama.

KEY STATISTICS (college level and above)

87 music students
Music Faculty: **5** full time, **100** adjunct
87 scholarships awarded

AREAS OF STUDY

Arts Leadership • Brass • Composition (Performance) • Conducting • Jazz Studies & Contemporary Media • Music Business • Musicology • Organ • Strings

Additional details: NWS annually offers also a fellowship in library and audio engineering and is a non-degree-granting member of the National Association of Schools of Music.

ONLINE COURSES

[Online courses information](#)

PANDEMIC & SAFETY

✓=Yes ✗=No ○=Under consideration

Is the school considering:

- ✗ Shifting semester start and/or end dates?
- Changes to class and/or ensemble sizes?
- ✓ Shifting more coursework online?
- Requiring masks for students, faculty, staff?
- ✓ Reducing on-campus housing density, if provided?

Does the school plan to test all for COVID-19 at term start, then periodically?

Does the school plan changes to tuition and/or room & board fees? ✗

SOCIAL LINKS



NORTHEASTERN UNIVERSITY DEPARTMENT OF MUSIC

WHAT DISTINGUISHES THIS SCHOOL?

The Department of Music at Northeastern is devoted to offering graduate and undergraduate majors, and combined majors and minors, a cross-disciplinary approach to research and practice in music, underscored by real-world experiential learning and cutting-edge technology.

LOCATION 351 Ryder Hall
Northeastern University
Boston, MA 02115
camd.northeastern.edu/music

ADMISSIONS 617-373-2200
admissions@northeastern.edu

FINANCIAL INFORMATION
[Tuition & Fees](#) / [Financial Aid & Scholarships](#)

CAREER / POST-GRADUATION ASSISTANCE
[Career assistance](#)

KEY STATISTICS (college level and above)
335 music students
Music Faculty: 19 full time, 10 adjunct

AREAS OF STUDY
Arts Leadership • Music Business • Music Technology
(including Production)

DEGREE PROGRAMS

[Undergraduate Programs](#) / [Graduate Programs](#)

Additional details: Music with Concentration in Music Industry, BS; Music with Concentration in Music Technology, BS; Music, BA; Computer Science and Music with Concentration in Music Technology, BS; Electrical Engineering and Music with Concentration in Music Technology, BS; Game Design and Music with Concentration in Music Technology, BS; Music and Communication Studies with Concentration in Music Industry, BS; Music and Psychology, BS; Physics and Music with Concentration in Music Technology, BS; Arts Administration and Cultural Entrepreneurship, MS; Creative Practice Leadership, MS; Music Industry Leadership, MS; Arts Administration, Graduate Certificate; Cultural Entrepreneurship, Graduate Certificate

PANDEMIC & SAFETY

✓=Yes ✗=No ○=Under consideration

[Policies & Procedures for this school](#)

Is the school considering:

- *Shifting semester start and/or end dates?*
- ✓ *Changes to class and/or ensemble sizes?*
- ✓ *Shifting more coursework online?*
- ✓ *Requiring masks for students, faculty, staff?*
- ✓ *Reducing on-campus housing density, if provided?*

Does the school plan to test all for COVID-19 at term start, then periodically? ○

Does the school plan changes to tuition and/or room & board fees? ○

SOCIAL LINKS    

OBERLIN CONSERVATORY OF MUSIC

Oberlin College

WHAT DISTINGUISHES THIS SCHOOL?

Oberlin Conservatory focuses on undergraduate pre-professional musicians in classical, contemporary, and jazz performance; composition; and electronic music. Two graduate programs—Piano Technology and Recording Arts & Production—lead to Artist Diplomas. The conservatory is embedded within the premier liberal arts environment of Oberlin College and is renowned for the Double Degree Program.

LOCATION 77 West College Street
Oberlin, OH 44074
UNITED STATES
www.oberlin.edu/conservatory

ADMISSIONS
440-775-8413
Conservatory.Admissions@oberlin.edu

Audition Requirements [Audition Requirements](#)
Audition requirements vary according to discipline

FINANCIAL INFORMATION
[Tuition & Fees](#) / [Financial Aid & Scholarships](#)

CAREER / POST-GRADUATION ASSISTANCE
Oberlin College's [Career Center](#) and Oberlin Conservatory's [Professional Development Office](#) help students and recent alumni in the College of Arts and Sciences and the Conservatory of Music.

KEY STATISTICS (college level and above)
580 music students
Music Faculty: 80 full time, 25 adjunct
550 scholarships awarded

AREAS OF STUDY

Brass • Collaborative Piano • Composition (Performance) • Conducting • Early Music • Jazz Studies & Contemporary Media • Music Technology (including Production) • Musicology • Organ • Piano • Strings • Vocal Arts/Opera • Winds & Percussion • Vocal Accompanying • Piano Technology

DEGREE PROGRAMS

[Undergraduate Programs](#) / [Graduate Programs](#)

Additional details: MM in Performance on Historical Instruments; MM in Conducting

ADDITIONAL PROGRAMS

(non-matriculating/prep)
[Center for Innovation & Impact](#) / [Summer Programs](#)

PANDEMIC & SAFETY

✓=Yes ✗=No ○=Under consideration

[Policies & Procedures for this school](#)

Is the school considering:

- ✓ *Shifting semester start and/or end dates?*
- ✓ *Changes to class and/or ensemble sizes?*
- ✓ *Shifting more coursework online?*
- ✓ *Requiring masks for students, faculty, staff?*
- ✓ *Reducing on-campus housing density, if provided?*

Does the school plan to test all for COVID-19 at term start, then periodically? ✓

Does the school plan changes to tuition and/or room & board fees? ✗

SOCIAL LINKS      

OHIO STATE UNIVERSITY SCHOOL OF MUSIC

For current information, please [see this school's website](#).

OPERA STEAMBOAT

WHAT DISTINGUISHES THIS SCHOOL?

The Opera Artist Institute is open to selected singers dedicated to performing at their highest level and one or more rising directors, conductors, and pianist-coaches. The Institute provides aspiring professionals with performance experience and professional training but is open to excellent musicians of any age.

LOCATION PO Box 775576
Steamboat Springs, CO 80477
UNITED STATES
operasteamboat.org/

ADMISSIONS 970-879-1996
oai@operasteamboat.org

Audition Requirements [Audition Requirements](#)
Three to five arias of contrasting styles

FINANCIAL INFORMATION
[Tuition & Fees](#) / [Financial Aid & Scholarships](#)

CAREER / POST-GRADUATION ASSISTANCE
We provide recommendation letters to any Opera Artist Institute graduates who have successfully completed the program.

KEY STATISTICS (college level and above)

35 music students
Music Faculty: 5 full time, 5 adjunct
10 scholarships awarded

AREAS OF STUDY

Vocal Arts/Opera

ONLINE COURSES

[Online courses information](#)

PANDEMIC & SAFETY

✓=Yes ✗=No ○=Under consideration

Is the school considering:

- ✗ *Shifting semester start and/or end dates?*
- *Changes to class and/or ensemble sizes?*
- *Shifting more coursework online?*
- *Requiring masks for students, faculty, staff?*
- ✓ *Reducing on-campus housing density, if provided?*

Does the school plan to test all for COVID-19 at term start, then periodically? ○

Does the school plan changes to tuition and/or room & board fees? ○

SOCIAL LINKS



PARK UNIVERSITY INTERNATIONAL CENTER FOR MUSIC

WHAT DISTINGUISHES THIS SCHOOL?

World-renowned faculty and students; Van Cliburn Gold Medalist Stanislav Loudenitch is on faculty; Cliburn Silver Medalist Kenny Broberg is a current graduate student; London International Piano Competition Gold Medalist Behzod Abduraimov is artist-in-residence.

LOCATION 8700 NW River Park Drive
Parkville, MO 64152
UNITED STATES
www.park.edu/

ADMISSIONS 816-746-2533
admissions@park.edu

Audition Requirements [Audition Requirements](#)

FINANCIAL INFORMATION
[Tuition & Fees](#) / [Financial Aid & Scholarships](#)

CAREER / POST-GRADUATION ASSISTANCE
[Career assistance](#)

KEY STATISTICS (college level and above)
25 music students
Music Faculty: 6 full time, 0 adjunct

AREAS OF STUDY

Piano • Strings

DEGREE PROGRAMS

[Undergraduate Programs](#) / [Graduate Programs](#)
Additional details: Bachelor of Music in Performance (Piano, Violin, Viola Cello, Orchestral Woodwinds and Brass)

Master of Music in Performance (Two-Year Program, Applied Emphasis in Piano, Violin, Viola or Cello)
Graduate Certificate in Music Performance (Two-Year Program)
Graduate Artist Diploma in Music Performance (Two-Year Program—Applied Emphasis in Piano, Violin, Viola or Cello)

ONLINE COURSES

[Online courses information](#)

PANDEMIC & SAFETY

✓=Yes ✗=No ○=Under consideration

[Policies & Procedures for this school](#)

Is the school considering:

- ✗ *Shifting semester start and/or end dates?*
- ✗ *Changes to class and/or ensemble sizes?*
- *Shifting more coursework online?*
- ✓ *Requiring masks for students, faculty, staff?*
- ✓ *Reducing on-campus housing density, if provided?*

Does the school plan to test all for COVID-19 at term start, then periodically? ○

Does the school plan changes to tuition and/or room & board fees? ✗

SOCIAL LINKS



PEABODY CONSERVATORY

Johns Hopkins University

WHAT DISTINGUISHES THIS SCHOOL?

The Peabody Institute was founded in 1857 as the first major intellectual and arts center in an American city by philanthropist George Peabody. Focused on the five pillars of excellence, interdisciplinary experiences, innovation, community connectivity, and diversity, Peabody is introducing the [Breakthrough Curriculum in Music Leadership](#) to prepare artists for a world that is constantly changing.

LOCATION 1 East Mount Vernon Place
Baltimore, MD 21202
UNITED STATES
peabody.jhu.edu/

ADMISSIONS 667-208-6600
admissions@peabody.jhu.edu

Audition Requirements [Audition Requirements](#)

FINANCIAL INFORMATION
[Tuition & Fees](#) / [Financial Aid & Scholarships](#)

CAREER / POST-GRADUATION ASSISTANCE
[LAUNCHPad](#), Peabody's comprehensive career services office, helps students and recent alumni forge successful careers. We provide wide-ranging services in support of students and alumni's goals.

KEY STATISTICS (college level and above)
675 music students
Music Faculty: **75** full time, **100** adjunct
500 scholarships awarded



AREAS OF STUDY

Brass • Collaborative Piano • Composition (Performance) • Conducting • Early Music • Jazz Studies & Contemporary Media • Music Business • Music Education • Music Technology (including Production) • Musicology • Organ • Piano • Strings • Vocal Arts/Opera • Winds & Percussion • Acoustics • Chamber Music • Computer Music • Dance • Guitar • Music for New Media • Pedagogy • Recording Arts and Sciences • Vocal Accompanying

DEGREE PROGRAMS

[Undergraduate Programs](#) / [Graduate Programs](#)

ADDITIONAL PROGRAMS

(non-matriculating/prep)
[Beyond Technique Dance Intensive](#) / [Music for New Media](#)

ONLINE COURSES

[Online courses information](#)

PANDEMIC & SAFETY

✓=Yes ✗=No ○=Under consideration
[Policies & Procedures for this school](#)

Is the school considering:

- ✗ *Shifting semester start and/or end dates?*
- *Changes to class and/or ensemble sizes?*
- ✓ *Shifting more coursework online?*
- ✓ *Requiring masks for students, faculty, staff?*
- ✓ *Reducing on-campus housing density, if provided?*

Does the school plan to test all for COVID-19 at term start, then periodically? ○

Does the school plan changes to tuition and/or room & board fees? ✗

SOCIAL LINKS    



LARRY GANNER

MADELINE GRAY

Explore the PEABODY CONSERVATORY, a community of artists cultivating excellence, embracing new ideas, and committed to the future of music in our world.

peabody.jhu.edu

667-208-6600



PECK SCHOOL OF THE ARTS

University of Wisconsin—Milwaukee

WHAT DISTINGUISHES THIS SCHOOL?

Music at UW-Milwaukee offers comprehensive undergraduate and graduate education, and is the largest professional degree-granting music department in the UW System. Our renowned artist faculty and alumni perform with the Milwaukee Symphony Orchestra, the Lyric Opera of Chicago, the Florentine Opera, Present Music, and more.

LOCATION UWM Department of Music
PO Box 413
Milwaukee, WI 53201
UNITED STATES
uwm.edu/arts/

ADMISSIONS 414-229-4763
uwmpsoa@uwm.edu

FINANCIAL INFORMATION
[Tuition & Fees](#)

CAREER / POST-GRADUATION ASSISTANCE
UW-Milwaukee offers a comprehensive Career Planning and Resource Center.

KEY STATISTICS (college level and above)
300 music students
Music Faculty: 28 full time, 29 adjunct

AREAS OF STUDY

Brass • Collaborative Piano • Composition (Performance) • Conducting • Music Education • Music Technology (including Production) • Musicology • Piano • Strings • Vocal Arts/Opera • Winds & Percussion

DEGREE PROGRAMS

[Undergraduate Programs](#) / [Graduate Programs](#)

Additional details: Master of Music/Master of Library and Information Sciences (integrated degree)

ONLINE COURSES

[Online courses information](#)

PANDEMIC & SAFETY

✓=Yes ✗=No ○=Under consideration

[Policies & Procedures for this school](#)

Is the school considering:

- ✗ *Shifting semester start and/or end dates?*
- ✓ *Changes to class and/or ensemble sizes?*
- ✓ *Shifting more coursework online?*
- ✓ *Requiring masks for students, faculty, staff?*
- ✓ *Reducing on-campus housing density, if provided?*

Does the school plan to test all for COVID-19 at term start, then periodically? ○

Does the school plan changes to tuition and/or room & board fees? ○

SOCIAL LINKS



PEPPERDINE UNIVERSITY

WHAT DISTINGUISHES THIS SCHOOL?

Pepperdine University has emerged as one of the nation's leading private universities. Located in beautiful Malibu, CA, the Music Department offers high-quality instruction and an exceptional, personal learning experience for each individual.

LOCATION

24255 Pacific Coast Highway
Malibu, CA 90263
UNITED STATES
seaver.pepperdine.edu/fine-arts/undergraduate/music/

ADMISSIONS 310-506-4111
fineartsrecruit@pepperdine.edu

Audition Requirements [Audition Requirements](#)

FINANCIAL INFORMATION
[Tuition & Fees](#) / [Financial Aid & Scholarships](#)

CAREER / POST-GRADUATION ASSISTANCE
[Career assistance](#)

KEY STATISTICS

(college level and above)
80 music students
Music Faculty: 8 full time, 30 adjunct

AREAS OF STUDY

Brass • Composition (Performance) • Music Education • Piano • Strings • Vocal Arts/Opera • Winds & Percussion

ADDITIONAL PROGRAMS

(non-matriculating/prep)
[Up Against the Screen and the Pickford Ensemble / Opera Program](#) / [Heidelberg Music Program](#)

PANDEMIC & SAFETY

✓=Yes ✗=No ○=Under consideration

[Policies & Procedures for this school](#)

Is the school considering:

- ✓ *Shifting semester start and/or end dates?*
- ✓ *Changes to class and/or ensemble sizes?*
- ✓ *Shifting more coursework online?*
- ✓ *Requiring masks for students, faculty, staff?*
- ✓ *Reducing on-campus housing density, if provided?*

Does the school plan to test all for COVID-19 at term start, then periodically? ✗

Does the school plan changes to tuition and/or room & board fees? ○

SOCIAL LINKS



PURCHASE COLLEGE CONSERVATORY OF MUSIC

State University of New York

WHAT DISTINGUISHES THIS SCHOOL?

The Purchase College Conservatory of Music offers a multidisciplinary approach to conservatory training; individualized attention and mentoring from world-class musicians; scholarships and financial aid; double majors and minors, including arts management; and a location just 40 minutes from New York City.

LOCATION 735 Anderson Hill Road
Purchase, NY 10577
UNITED STATES
www.purchase.edu/music/

ADMISSIONS 914-251-6700
music@purchase.edu

Audition Requirements [Audition Requirements](#)
You must have an application for admission on file in order to be offered a live audition.

FINANCIAL INFORMATION
[Tuition & Fees](#) / [Financial Aid & Scholarships](#)

CAREER / POST-GRADUATION ASSISTANCE
Our [Career Development Center](#) offers support in choosing the right major, marketing yourself, interviewing, and job and graduate-school prep. Services are also available for alumni.

KEY STATISTICS (college level and above)
380 music students
Music Faculty: **25** full time, **50** adjunct
100 scholarships awarded

AREAS OF STUDY

Arts Leadership • Brass • Collaborative Piano • Composition (Performance) • Jazz Studies & Contemporary Media • Music Technology (including Production) • Musicology • Piano • Strings • Vocal Arts/Opera • Winds & Percussion • Guitar • Studio Composition

DEGREE PROGRAMS
[Undergraduate Programs](#) / [Graduate Programs](#)

PANDEMIC & SAFETY
✓=Yes ✗=No ○=Under consideration
[Policies & Procedures for this school](#)

Is the school considering:
✗ *Shifting semester start and/or end dates?*
✓ *Changes to class and/or ensemble sizes?*
✓ *Shifting more coursework online?*
✓ *Requiring masks for students, faculty, staff?*
✓ *Reducing on-campus housing density, if provided?*

Does the school plan to test all for COVID-19 at term start, then periodically? ✗
Does the school plan changes to tuition and/or room & board fees? ○

SOCIAL LINKS   

ROYAL COLLEGE OF MUSIC

WHAT DISTINGUISHES THIS SCHOOL?

The Royal College of Music is one of the world's greatest conservatories. Ranked the top institution for performing arts in the U.K. for five consecutive years (QS World University Rankings 2016-20), we have nurtured exceptional musical talent for more than 135 years and welcome students from all over the globe.

LOCATION Prince Consort Road
London SW7 2BS
UNITED KINGDOM
www.rcm.ac.uk/

ADMISSIONS +44 (0)20 7591 4300
admissions@rcm.ac.uk

Audition Requirements [Audition Requirements](#)
Audition requirements are set by each faculty.

FINANCIAL INFORMATION
[Tuition & Fees](#) / [Financial Aid & Scholarships](#)

CAREER / POST-GRADUATION ASSISTANCE
The RCM is a world leader in career development for musicians. Our dedicated [Creative Careers Centre](#) will guide you through a range of opportunities that mirror the professional world. You can use these services from day one of your course to develop an outstanding CV and wealth of experience that will help shape your future career, and the Creative Careers Centre provides advice and services to RCM alumni for five years after graduation.

KEY STATISTICS (college level and above)
800 music students
Music Faculty: **44** full time, **276** adjunct

AREAS OF STUDY

Brass • Collaborative Piano • Composition (Performance) • Conducting • Early Music • Music Education • Music Technology (including Production) • Musicology • Organ • Piano • Strings • Vocal Arts/Opera • Winds & Percussion

DEGREE PROGRAMS
[Undergraduate Programs](#) / [Graduate Programs](#)

PANDEMIC & SAFETY
✓=Yes ✗=No ○=Under consideration
Is the school considering:
✗ *Shifting semester start and/or end dates?*
○ *Changes to class and/or ensemble sizes?*
✓ *Shifting more coursework online?*
○ *Requiring masks for students, faculty, staff?*
✗ *Reducing on-campus housing density, if provided?*
Does the school plan to test all for COVID-19 at term start, then periodically? ✗
Does the school plan changes to tuition and/or room & board fees? ✗

SOCIAL LINKS    

SAN FRANCISCO CONSERVATORY OF MUSIC

WHAT DISTINGUISHES THIS SCHOOL?

With a faculty that includes nearly 30 members of the San Francisco Symphony, as well as collaborative partnerships with the Bay Area's major performing arts institutions, tech, and entertainment companies, SFCM provides its students with an unparalleled opportunity to study in the heart of San Francisco's performing arts district.

LOCATION 50 Oak Street
San Francisco, CA 94102
UNITED STATES
sfc.edu/

ADMISSIONS 800-899-SFCM
apply@sfc.edu

Audition Requirements [Audition Requirements](#)

FINANCIAL INFORMATION

[Tuition & Fees](#) / [Financial Aid & Scholarships](#)

CAREER / POST-GRADUATION ASSISTANCE

The [Professional Development and Engagement Center](#) (PDEC) offers students gig opportunities, internships, a grant service, access to employment listings, and courses on marketing, finance, teaching, and technology.

KEY STATISTICS (college level and above)
422 music students
Music Faculty: 28 full time, 65 adjunct

AREAS OF STUDY

Brass • Collaborative Piano • Composition (Performance) • Conducting • Early Music • Jazz Studies & Contemporary Media • Music Technology (including Production) • Organ • Piano • Strings • Vocal Arts/Opera • Winds & Percussion • Chamber Music • Classical Guitar

DEGREE PROGRAMS

[Undergraduate Programs](#) / [Graduate Programs](#)

ADDITIONAL PROGRAMS

(non-matriculating/prep)
[Rubin Institute for Music Criticism](#) / [Center for Innovative Leadership](#) / [Pre-College Division](#)

ONLINE COURSES

[Online courses information](#)

PANDEMIC & SAFETY

✓=Yes ✗=No ○=Under consideration

[Policies & Procedures for this school](#)

Is the school considering:

- *Shifting semester start and/or end dates?*
- ✓ *Changes to class and/or ensemble sizes?*
- ✓ *Shifting more coursework online?*
- ✓ *Requiring masks for students, faculty, staff?*
- ✗ *Reducing on-campus housing density, if provided?*

Does the school plan to test all for COVID-19 at term start, then periodically? ✓

Does the school plan changes to tuition and/or room & board fees? ✗

SOCIAL LINKS     

SHANGHAI ORCHESTRA ACADEMY (SOA)

Shanghai Conservatory of Music

WHAT DISTINGUISHES THIS SCHOOL?

The Shanghai Orchestra Academy (SOA) is the result of a partnership among the Shanghai Symphony Orchestra (SSO), New York Philharmonic, and Shanghai Conservatory of Music. The SOA provides rigorous training at the Master's degree level for talented instrumentalists.

LOCATION

1380 Middle Fuxing Road
Shanghai
CHINA
soa.shsymphony.com/en/index.aspx

ADMISSIONS

+ 86 21-54667821
admissions@orchestraacademy.com

Audition Requirements [Audition Requirements](#)

FINANCIAL INFORMATION

[Tuition & Fees](#) / [Financial Aid & Scholarships](#)

CAREER / POST-GRADUATION ASSISTANCE

Students gain first-hand experience learning from and playing with NY Philharmonic musicians as well as performing with the SSO. Other international partners who have offered training opportunities to SOA students include the NDR Elbphilharmonie Orchestra, Sydney Symphony Orchestra, Singapore Symphony Orchestra, Hong Kong Philharmonic Orchestra, Taiwan Philharmonic, China Philharmonic Orchestra, Guangzhou Symphony Orchestra, and Hangzhou Philharmonic.

KEY STATISTICS

 (college level and above)

40 music students
Music Faculty: 22 full time, 40 adjunct

AREAS OF STUDY

Brass • Strings • Winds & Percussion

DEGREE PROGRAMS

[Graduate Programs](#)

PANDEMIC & SAFETY

✓=Yes ✗=No ○=Under consideration

Is the school considering:

- ✓ *Shifting semester start and/or end dates?*
- *Changes to class and/or ensemble sizes?*
- ✓ *Shifting more coursework online?*
- ✓ *Requiring masks for students, faculty, staff?*
- n/a *Reducing on-campus housing density, if provided?*

Does the school plan to test all for COVID-19 at term start, then periodically? ✗

Does the school plan changes to tuition and/or room & board fees? ○

SOCIAL LINKS    

SHENANDOAH CONSERVATORY

Shenandoah University

WHAT DISTINGUISHES THIS SCHOOL?

Shenandoah Conservatory offers rigorous professional training in music, theater, and dance, with extensive performance opportunities, collaborative and interdisciplinary experiences, and close mentoring relationships with faculty and guest artists.

LOCATION 1460 University Drive
Winchester, VA 22601
UNITED STATES
www.su.edu/conservatory/

ADMISSIONS 540-665-4581
admit@su.edu

Audition Requirements [Audition Requirements](#)

FINANCIAL INFORMATION

[Tuition & Fees](#) / [Financial Aid & Scholarships](#)

CAREER / POST-GRADUATION ASSISTANCE

Shenandoah University's Career Services works with students in all aspects of the career development process. For additional information, visit the [Career Services website](#).

KEY STATISTICS (college level and above)

501 music students

Music Faculty: 41 full time, 36 adjunct

AREAS OF STUDY

Arts Leadership • Brass • Collaborative Piano
• Composition (Performance) • Conducting • Jazz Studies & Contemporary Media • Music Business
• Music Education • Music Technology (including

Production) • Piano • Strings • Vocal Arts/Opera
• Winds & Percussion • Music Therapy • Vocal Pedagogy-Classical • Vocal Pedagogy-Contemporary Commercial Music • Dance • Acting • Musical Theater • Musical Theater Accompanying • Theater Design & Production • Performing Arts Leadership & Management

DEGREE PROGRAMS

[Undergraduate Programs](#) / [Graduate Programs](#)

ADDITIONAL PROGRAMS

(non-matriculating/prep)
[Ensembles](#) / [ShenCoLAB: Festival of Arts, Ideas and Exploration](#) / [Global Citizenship Project](#)

ONLINE COURSES

[Online courses information](#)

PANDEMIC & SAFETY

✓=Yes ✗=No ○=Under consideration

[Policies & Procedures for this school](#)

Is the school considering:

✗ *Shifting semester start and/or end dates?*

✓ *Changes to class and/or ensemble sizes?*

○ *Shifting more coursework online?*

✓ *Requiring masks for students, faculty, staff?*

✓ *Reducing on-campus housing density, if provided?*

Does the school plan to test all for COVID-19 at term start, then periodically? ○

Does the school plan changes to tuition and/or room & board fees? ○

SOCIAL LINKS



THE SHEPHERD SCHOOL OF MUSIC

Rice University

WHAT DISTINGUISHES THIS SCHOOL?

The Shepherd School of Music provides a dedicated faculty of artist-teachers, extraordinary performance opportunities, beautiful facilities, and an unparalleled education at one of America's premiere universities.

LOCATION 6100 Main Street, entrance 18
Houston, TX 77005
UNITED STATES
music.rice.edu/

ADMISSIONS 713-348-4854
musi@rice.edu

Audition Requirements
[Undergraduate](#) / [Graduate](#)

FINANCIAL INFORMATION

[Tuition & Fees](#) / [Financial Aid & Scholarships](#)

CAREER / POST-GRADUATION ASSISTANCE

To ensure that our students are fully prepared to meet the demands of the profession, we have created an instructional area entitled Music Career and Skills Enhancement. Specific courses are designed to complement the Shepherd School's superb musical and academic training to help students transition to professional life. Additionally, Rice University's Center for Career Development supports alumni through career counseling and access to career resources.

KEY STATISTICS (college level and above)

277 music students

Music Faculty: 46 full time, 0 adjunct

AREAS OF STUDY

Brass • Collaborative Piano • Composition (Performance) • Conducting • Musicology • Organ
• Piano • Strings • Vocal Arts/Opera • Winds & Percussion

DEGREE PROGRAMS

[Undergraduate Programs](#) / [Graduate Programs](#)

PANDEMIC & SAFETY

✓=Yes ✗=No ○=Under consideration

[Policies & Procedures for this school](#)

Is the school considering:

✓ *Shifting semester start and/or end dates?*

✓ *Changes to class and/or ensemble sizes?*

✓ *Shifting more coursework online?*

✓ *Requiring masks for students, faculty, staff?*

✓ *Reducing on-campus housing density, if provided?*

Does the school plan to test all for COVID-19 at term start, then periodically? ✓

Does the school plan changes to tuition and/or room & board fees? ✗

SOCIAL LINKS



THE TIANJIN JUILLIARD SCHOOL

The Juilliard School

WHAT DISTINGUISHES THIS SCHOOL?

The Tianjin Juilliard School uniquely focuses on collaborative musicianship, emphasizing a commitment to ensemble playing of the highest artistic level. Our programs reflect the best of educational standards, preparing students for a lifetime of creative expression, of engagement and growth as an individual and as a musician.

LOCATION Binhai New Area, Tianjin
CHINA
tianjinjuilliard.edu.cn/

ADMISSIONS 212-299-5000 x7642
admissions@tianjinjuilliard.edu.cn

Audition Requirements [Audition Requirements](#)

FINANCIAL INFORMATION

[Tuition & Fees](#) / [Financial Aid & Scholarships](#)

Tianjin Juilliard 天津茱莉亚学院

KEY STATISTICS (college level and above)
40 music students
Music Faculty: 24 full time, 0 adjunct

AREAS OF STUDY

Brass • Collaborative Piano • Strings • Winds & Percussion

DEGREE PROGRAMS

[Graduate Programs](#)

Additional details: M.M. Degree in Orchestral Studies, Chamber Music, and Collaborative Piano

ADDITIONAL PROGRAMS

(non-matriculating/prep)
[Pre-College Program](#)

PANDEMIC & SAFETY

✓=Yes ✗=No ○=Under consideration

Is the school considering:

- ✓ *Shifting semester start and/or end dates?*
- *Changes to class and/or ensemble sizes?*
- ✓ *Shifting more coursework online?*
- *Requiring masks for students, faculty, staff?*
- ✗ *Reducing on-campus housing density, if provided?*

Does the school plan to test all for COVID-19 at term start, then periodically? ✗

Does the school plan changes to tuition and/or room & board fees? ✗

SOCIAL LINKS



Study at Juilliard's New Branch Campus in China

**Master of Music in Chamber Music,
Orchestral Studies, and Collaborative Piano**

World-renowned faculty and guest artists
Full-tuition Fellowship Program
Additional scholarship opportunities available

Apply by December 15
tianjinjuilliard.edu.cn

Photo by Claudio Papapietro

Juilliard students
performing at
ChamberFest 2020

Contact Admissions



Northeastern University

Music at Northeastern University:
for students destined to become change agents
and thought leaders in industry, culture, and society



Undergraduate Programs:

- B.A. in Music
- B.S. in Music Industry
- B.S. in Music Technology
- Combined majors in Music and Computer Information Science, Physics, Engineering, Game Design, Mathematics, Psychology, Communication Studies, Media and Screen Studies

Co-op and Dialogues of Civilization:

The Co-op program sets Northeastern apart from other institutions and leverages NU's excellence in experiential learning. Co-ops and Dialogues of Civilization provide direct, real-world engagement with industry, creative culture and practice across the globe, partnering with over 100 companies and organizations—recording labels, music publishing companies, media outlets, cultural centers and performing arts organizations. For more information visit:

<https://www.northeastern.edu/admissions/application-information/apply>

Daniel Strong Godfrey
Professor and Chair
Department of Music
College of Arts, Media and Design
351 Ryder Hall
Northeastern University
Boston, MA 02115
d.godfrey@northeastern.edu



UCLA HERB ALPERT SCHOOL OF MUSIC

University of California, Los Angeles

WHAT DISTINGUISHES THIS SCHOOL?

The UCLA Herb Alpert School of Music is at the nexus of performance, scholarship, and innovation, balancing cutting-edge scholarship with performance mastery and composition.

LOCATION 445 Charles E Young Drive East
2520 Schoenberg Music Building
Los Angeles, CA 90095
UNITED STATES
www.schoolofmusic.ucla.edu/

ADMISSIONS 310-825-6457
admissions@schoolofmusic.ucla.edu

Audition Requirements

[Undergraduate audition requirements](#) / [Graduate audition requirements](#)

FINANCIAL INFORMATION

[Tuition & Fees](#) / [Financial Aid & Scholarships](#)

CAREER / POST-GRADUATION ASSISTANCE

[The UCLA Career Center](#) is one of the largest and most comprehensive career centers in the nation. In collaboration with the School of Music, it offers a wide range of services that help students explore their professional interests and facilitate connections with employers, alumni, and graduate school representatives.

KEY STATISTICS (college level and above)

553 music students
Music Faculty: 47 full time, 24 adjunct
278 scholarships awarded

AREAS OF STUDY

Brass • Collaborative Piano • Composition (Performance) • Conducting • Early Music • Jazz Studies & Contemporary Media • Music Business • Music Education • Music Technology (including Production) • Musicology • Organ • Piano • Strings • Vocal Arts/Opera • Ethnomusicology

DEGREE PROGRAMS

[Undergraduate Programs](#) / [Graduate Programs](#)

ONLINE COURSES

[Online courses information](#)

PANDEMIC & SAFETY

✓=Yes ✗=No ○=Under consideration
[Policies & Procedures for this school](#)

Is the school considering:

- ✗ Shifting semester start and/or end dates?
- Changes to class and/or ensemble sizes?
- ✓ Shifting more coursework online?
- ✓ Requiring masks for students, faculty, staff?
- ✓ Reducing on-campus housing density, if provided?

Does the school plan to test all for COVID-19 at term start, then periodically? ✗

Does the school plan changes to tuition and/or room & board fees? ✗

SOCIAL LINKS



UNIVERSITY OF CALIFORNIA, BERKELEY

For current information, please [see this school's website](#).

UNIVERSITY OF CINCINNATI COLLEGE— CONSERVATORY OF MUSIC (CCM)

WHAT DISTINGUISHES THIS SCHOOL?

Declared one of this country's leading conservatories by *The New York Times*, CCM offers nine degree types (BA, BM, BFA, MFA, MM, MA, AD, DMA, PhD) in more than 100 possible majors.

LOCATION PO Box 210003
290 CCM Boulevard
Cincinnati, OH 45221-0003
UNITED STATES
ccm.uc.edu

ADMISSIONS 513-556-9479
ccmadmis@uc.edu

Audition Requirements [Audition Requirements](#)

FINANCIAL INFORMATION

[Tuition & Fees](#) / [Financial Aid & Scholarships](#)

CAREER / POST-GRADUATION ASSISTANCE

Professional development and entrepreneurial acumen are an important part of the CCM experience. Faculty mentorship along with the Managing Professional Performance Careers course provide a foundation for transitioning to life after graduation. Select programs also host Senior Showcases in industry hotspots like New York, Chicago, and LA. CCM is also home to the [Bravos Without Barriers Diversity Fellowship](#) Program.



KEY STATISTICS (college level and above)

966 music students
Music Faculty: 88 full time, 57 adjunct
140 scholarships awarded

AREAS OF STUDY

Arts Leadership • Brass • Collaborative Piano
• Composition (Performance) • Conducting • Early Music • Jazz Studies & Contemporary Media • Music Business • Music Education • Music Technology (including Production) • Musicology • Organ • Piano • Strings • Vocal Arts/Opera • Winds & Percussion • Acting • Arts Administration • Ballet • Commercial Music Production • Media Production • Music History • Musical Theatre • Theatre Design and Production

DEGREE PROGRAMS

[Undergraduate Programs](#) / [Graduate Programs](#)

ADDITIONAL PROGRAMS

(non-matriculating/prep)
[Summer Programs](#)

ONLINE COURSES

[Online courses information](#)

PANDEMIC & SAFETY

✓=Yes ✗=No ○=Under consideration

[Policies & Procedures for this school](#)

Is the school considering:

- ✓ *Shifting semester start and/or end dates?*
- ✓ *Changes to class and/or ensemble sizes?*
- ✓ *Shifting more coursework online?*
- ✓ *Requiring masks for students, faculty, staff?*
- ✓ *Reducing on-campus housing density, if provided?*

Does the school plan to test all for COVID-19 at term start, then periodically? ○

Does the school plan changes to tuition and/or room & board fees? ○

SOCIAL LINKS



CCM students Jordan Curry and Magdiell Antequera perform with the Cincinnati Symphony Orchestra. The CSO/CCM Diversity Fellowship and Opera Fusion: New Works are made possible by generous support from The Andrew W. Mellon Foundation.

WELCOME TO YOUR NEXT STAGE.

Tomorrow's arts leaders and luminaries get their start at UC's nationally ranked and internationally renowned College-Conservatory of Music.

Whether it's paid performance opportunities with the Cincinnati Symphony Orchestra as part of the [CSO/CCM Diversity Fellowship Program](#) or a chance to work with some of the world's leading composers and librettists through the [Opera Fusion: New Works Program](#) with Cincinnati Opera, CCM provides life-changing experiences for tomorrow's performing and media arts professionals.

Internationally acclaimed faculty, classrooms without boundaries and unlimited opportunity. Your future is calling. Take your next step at ccm.uc.edu.

University of
CINCINNATI | CCM

UNIVERSITY OF COLORADO BOULDER

WHAT DISTINGUISHES THIS SCHOOL?

Founded in 1920, the college offers a wide range of programs uniquely combining advanced musical training with professionally oriented experiences and the rich resources of a leading research university. Active as award-winning professional performers, composers, and scholars, faculty members are committed to helping students develop their talents.

LOCATION 301 UCB
Boulder, CO 80309
UNITED STATES
www.colorado.edu/music/

ADMISSIONS 303-492-6301
apply@colorado.edu

Audition Requirements [Audition Requirements](#)

FINANCIAL INFORMATION
[Tuition & Fees](#) / [Financial Aid & Scholarships](#)

CAREER / POST-GRADUATION ASSISTANCE
[Career assistance](#)

KEY STATISTICS (college level and above)
550 music students
Music Faculty: **60** full time, **30** adjunct

AREAS OF STUDY

Arts Leadership • Brass • Collaborative Piano
• Composition (Performance) • Conducting • Early Music • Jazz Studies & Contemporary Media • Music Business • Music Education • Music Technology (including Production) • Musicology • Organ • Piano • Strings • Vocal Arts/Opera • Winds & Percussion • Musical Theatre

DEGREE PROGRAMS
[Undergraduate Programs](#) / [Graduate Programs](#)

ADDITIONAL PROGRAMS
(non-matriculating/prep)
[Entrepreneurship Center for Music](#)

PANDEMIC & SAFETY
✓=Yes ✗=No ○=Under consideration
[Policies & Procedures for this school](#)

Is the school considering:
✗ *Shifting semester start and/or end dates?*
○ *Changes to class and/or ensemble sizes?*
✓ *Shifting more coursework online?*
✓ *Requiring masks for students, faculty, staff?*
✓ *Reducing on-campus housing density, if provided?*
Does the school plan to test all for COVID-19 at term start, then periodically? ○
Does the school plan changes to tuition and/or room & board fees? ○

SOCIAL LINKS    

UNIVERSITY OF FLORIDA

WHAT DISTINGUISHES THIS SCHOOL?

The student body of the UF School of Music is an exceptional group of regional, national, and international artists and scholars. UF's extraordinary academic reputation, highly accomplished faculty, rigor of professional training, and notable success of our alumni attracts many of the best and brightest students each year.

LOCATION
Gainesville, FL 32611
UNITED STATES
<https://musiceducation.arts.ufl.edu/>

ADMISSIONS 866-794-8806
musiceducation@arts.ufl.edu

Audition Requirements [Audition Requirements](#)

FINANCIAL INFORMATION
[Tuition & Fees](#)

CAREER / POST-GRADUATION ASSISTANCE

The University of Florida Career Connections Center offers a variety of services, including one-on-one career advice, résumé help and templates for building a career action plan. Students gain access to our GaterLink platform, where they can schedule meetings with a career planner, look at upcoming workshops and other events, and connect with resources to push their careers to the next level.

KEY STATISTICS (college level and above)
500 music students
Music Faculty: **43** full time, **26** adjunct

AREAS OF STUDY Music Education

DEGREE PROGRAMS
[Undergraduate Programs](#) / [Graduate Programs](#)

ONLINE COURSES
[Online courses information](#)

PANDEMIC & SAFETY
✓=Yes ✗=No ○=Under consideration
Is the school considering:
✗ *Shifting semester start and/or end dates?*
✗ *Changes to class and/or ensemble sizes?*
✓ *Shifting more coursework online?*
✓ *Requiring masks for students, faculty, staff?*
n/a Reducing on-campus housing density, if provided?
Does the school plan to test all for COVID-19 at term start, then periodically? ○
Does the school plan changes to tuition and/or room & board fees? ○

SOCIAL LINKS   

UNIVERSITY OF ILLINOIS SCHOOL OF MUSIC

University of Illinois at Urbana-Champaign

WHAT DISTINGUISHES THIS SCHOOL?

Beautiful facilities including the Krannert Center for the Performing Arts; inclusive community with supportive faculty; individual attention for students; diverse Big 10 campus with wide-ranging performance and research opportunities.

LOCATION 1114 West Nevada Street
Urbana, IL 61801
UNITED STATES
music.illinois.edu/

ADMISSIONS 217-244-7899
musicadmissions@illinois.edu

Audition Requirements [Audition Requirements](#)

FINANCIAL INFORMATION

[Tuition & Fees](#) / [Financial Aid & Scholarships](#)

CAREER / POST-GRADUATION ASSISTANCE

The [Career Services Office](#) offers workshops, job fairs, hands-on sessions, and individual appointments for professional feedback. School of Music entrepreneurship events help students develop important business and marketing skills.

KEY STATISTICS (college level and above)

725 music students

Music Faculty: 90 full time, 0 adjunct

AREAS OF STUDY

Brass • Collaborative Piano • Composition (Performance) • Conducting • Jazz Studies & Contemporary Media • Music Business • Music Education • Music Technology (including

Production) • Musicology • Organ • Piano • Strings • Vocal Arts/Opera • Winds & Percussion • Choral Conducting • Computer Science + Music • Instrumental Performance • Jazz Performance • Lyric Theatre • Music Technology • Open Studies • Piano Pedagogy • Vocal Coaching and Accompanying • Vocal Performance • Wind Band Conducting

DEGREE PROGRAMS

[Undergraduate Programs](#) / [Graduate Programs](#)

ADDITIONAL PROGRAMS

(non-matriculating/prep)
[Illinois Summer Music Online](#)

ONLINE COURSES

[Online courses information](#)

PANDEMIC & SAFETY

✓=Yes ✗=No ○=Under consideration

[Policies & Procedures for this school](#)

Is the school considering:

✗ *Shifting semester start and/or end dates?*

✓ *Changes to class and/or ensemble sizes?*

✓ *Shifting more coursework online?*

✓ *Requiring masks for students, faculty, staff?*

✓ *Reducing on-campus housing density, if provided?*

Does the school plan to test all for COVID-19 at term start, then periodically? ✓

Does the school plan changes to tuition and/or room & board fees? ✓

SOCIAL LINKS



UNIVERSITY OF MASSACHUSETTS AMHERST DEPARTMENT OF MUSIC & DANCE

WHAT DISTINGUISHES THIS SCHOOL?

UMass Amherst offers conservatory quality education in a university setting. Intensive yet supportive, the music program has a variety of concentrations as well as nationally and internationally renowned faculty.

LOCATION 273 Fine Arts Center East,
University of Massachusetts
Amherst, MA 01003
UNITED STATES
www.umass.edu/music/

ADMISSIONS 413-545-6048
musicadmissions@umass.edu

Audition Requirements

[Undergraduate Audition requirements by instrument](#) /
[Graduate Audition requirements by instrument](#)

Prospective undergraduates must submit the Common App before signing up for an audition. Early Action is recommended. To sign up for an audition, students must submit an online Audition Request Form, which can be found [on the department website](#).

FINANCIAL INFORMATION

[Tuition & Fees](#) / [Financial Aid & Scholarships](#)

CAREER / POST-GRADUATION ASSISTANCE

[Career Services](#)

Humanities & Fine Arts Career Planning Rep:
[Caroline Gould](#), 413-545-6257

KEY STATISTICS (college level and above)

292 music students

Music Faculty: 43 full time, 3 adjunct

AREAS OF STUDY

Brass • Collaborative Piano • Composition (Performance) • Conducting • Jazz Studies & Contemporary Media • Music Education • Piano • Strings • Vocal Arts/Opera • Winds & Percussion • Music Theory • Music History

DEGREE PROGRAMS

[Undergraduate Programs](#) / [Graduate Programs](#)

ONLINE COURSES

[Online courses information](#)

PANDEMIC & SAFETY

✓=Yes ✗=No ○=Under consideration

Is the school considering:

✓ *Shifting semester start and/or end dates?*

○ *Changes to class and/or ensemble sizes?*

○ *Shifting more coursework online?*

○ *Requiring masks for students, faculty, staff?*

✓ *Reducing on-campus housing density, if provided?*

Does the school plan to test all for COVID-19 at term start, then periodically? ○

Does the school plan changes to tuition and/or room & board fees? ○

SOCIAL LINKS



UNIVERSITY OF MASSACHUSETTS LOWELL DEPARTMENT OF MUSIC

WHAT DISTINGUISHES THIS SCHOOL?

We offer Bachelor of Music majors in Sound Recording Technology, Music Business, Music Education, and Music Performance. We are now offering a new major: Composition for New Media.

LOCATION Durgin Hall
35 Wilder Street
Lowell, MA 01854
UNITED STATES
www.uml.edu/FAHSS/Music/

ADMISSIONS 978-934-3931
admissions@uml.edu

Audition Requirements [Audition Requirements](#)

FINANCIAL INFORMATION
[Tuition & Fees](#) / [Financial Aid & Scholarships](#)

CAREER / POST-GRADUATION ASSISTANCE
Internships in Music Business and Sound Recording Technology help provide job experience and placement.

KEY STATISTICS (college level and above)
400 music students
Music Faculty: **16** full time, **45** adjunct

AREAS OF STUDY
Composition (Performance) • Music Business
• Music Education • Music Technology (including Production) • Composition for New Media
• Music Performance

DEGREE PROGRAMS
[Undergraduate Programs](#) / [Graduate Programs](#)

PANDEMIC & SAFETY
✓=Yes ✗=No ○=Under consideration
Is the school considering:
✗ *Shifting semester start and/or end dates?*
✓ *Changes to class and/or ensemble sizes?*
✓ *Shifting more coursework online?*
✓ *Requiring masks for students, faculty, staff?*
✓ *Reducing on-campus housing density, if provided?*
Does the school plan to test all for COVID-19 at term start, then periodically? ○
Does the school plan changes to tuition and/or room & board fees? ○

SOCIAL LINKS 

UNIVERSITY OF MICHIGAN SCHOOL OF MUSIC, THEATRE & DANCE

WHAT DISTINGUISHES THIS SCHOOL?

The School's unique relationship as a part of the U-M, ranked as one the top universities in the U.S., provides students with a vast array of options and opportunities.

LOCATION 1100 Baits Drive, 2290 Moore
Ann Arbor, MI 48109
UNITED STATES
smt.d.umich.edu/

ADMISSIONS 734-764-0593
smt.d.admissions@umich.edu

Audition Requirements [Audition Requirements](#)

FINANCIAL INFORMATION
[Tuition & Fees](#) / [Financial Aid & Scholarships](#)

CAREER / POST-GRADUATION ASSISTANCE
The School of Music, Theatre & Dance EXCEL Program catalyzes success for U-M SMTD students and alumni through courses, co-curricular workshops, ongoing mentoring, and \$100,000 in student project and venture funding.

KEY STATISTICS (college level and above)
1100 music students
Music Faculty: **148** full time, **75** adjunct

AREAS OF STUDY
Arts Leadership • Brass • Collaborative Piano
• Composition (Performance) • Conducting • Early Music • Jazz Studies & Contemporary Media • Music Business • Music Education • Music Technology (including Production) • Musicology • Organ • Piano • Strings • Vocal Arts/Opera • Winds & Percussion • Performing Arts Technology • Dance • Musical Theatre • Theatre

DEGREE PROGRAMS
[Undergraduate Programs](#) / [Graduate Programs](#)

ADDITIONAL PROGRAMS
(non-matriculating/prep)
[Engagement & Outreach](#)

PANDEMIC & SAFETY
✓=Yes ✗=No ○=Under consideration
[Policies & Procedures for this school](#)
Is the school considering:
○ *Shifting semester start and/or end dates?*
○ *Changes to class and/or ensemble sizes?*
○ *Shifting more coursework online?*
○ *Requiring masks for students, faculty, staff?*
✓ *Reducing on-campus housing density, if provided?*
Does the school plan to test all for COVID-19 at term start, then periodically? ○
Does the school plan changes to tuition and/or room & board fees? ✗

SOCIAL LINKS    

UNIVERSITY OF NORTH CAROLINA SCHOOL OF THE ARTS



WHAT DISTINGUISHES THIS SCHOOL?

UNCSA School of Music offers a transformative conservatory experience that prepares students for professional careers. The program combines intensive individual study under professional artist-mentors with a variety of performance opportunities including collaborations with other UNCSA arts schools.

LOCATION 1533 South Main Street
Winston-Salem, NC 27127
UNITED STATES
www.uncsa.edu/

ADMISSIONS 336-770-3290
admissions@uncsa.edu

Audition Requirements

[Undergraduate](#) / [Graduate](#) / [High School](#)

FINANCIAL INFORMATION

[Tuition & Fees](#) / [Financial Aid & Scholarships](#)

CAREER / POST-GRADUATION ASSISTANCE

UNCSA [Office of Career Development](#) works hand-in-hand with the arts schools in career preparation training. UNCSA students participate in career development seminars as part of their curriculum.

KEY STATISTICS (college level and above)

169 music students

Music Faculty: 27 full time, **18** adjunct

AREAS OF STUDY

Brass • Collaborative Piano • Composition (Performance) • Conducting • Music Technology (including Production) • Musicology • Organ • Piano • Strings • Vocal Arts/Opera • Winds & Percussion

DEGREE PROGRAMS

[Undergraduate Programs](#) / [Graduate Programs](#)

ADDITIONAL PROGRAMS

(non-matriculating/prep)
[A.J. Fletcher Opera Institute](#)

ONLINE COURSES

[Online courses information](#)

PANDEMIC & SAFETY

✓=Yes ✗=No ○=Under consideration

[Policies & Procedures for this school](#)

Is the school considering:

- ✓ *Shifting semester start and/or end dates?*
- ✓ *Changes to class and/or ensemble sizes?*
- ✓ *Shifting more coursework online?*
- ✓ *Requiring masks for students, faculty, staff?*
- ✓ *Reducing on-campus housing density, if provided?*

Does the school plan to test all for COVID-19 at term start, then periodically? ✗

Does the school plan changes to tuition and/or room & board fees? ✗

SOCIAL LINKS



UNIVERSITY OF NORTH CAROLINA
SCHOOL OF THE ARTS



IT'S ABSOLUTELY
THRILLING TO
PERFORM IN AN
ENVIRONMENT
WHERE EVERYONE
IS COMMITTED TO
EXCELLENCE AND
EXCITED ABOUT
INNOVATION IN MUSIC.

—Jane Koelsh, '20

Dance
Design & Production
Drama
Filmmaking
Music

Powering Creativity

UNCSA.EDU/MUSIC

Oberlin Conservatory Celebrating Tradition. Creating the Future.



YEVHEN GULENKO

At Oberlin, students are guided along diverse routes by expert faculty mentors. They are inspired through individualized instruction in studios and classes that launch compelling performances. And they are supported by campus resources that make imaginative projects possible.

This transformative education has launched cutting-edge music-makers including Musical America award winners Robert Spano, Jennifer Koh, Christopher Rouse, Jeremy Denk, and founders/members of ICE, Eighth Blackbird, Pacifica Quartet, and Boston Modern Orchestra Project.

OBERLIN
COLLEGE & CONSERVATORY

conservatory.admissions@oberlin.edu
440-775-8413
oberlin.edu/con

UNIVERSITY OF NORTH TEXAS

For current information, please [see this school's website](#).



OPERA
STEAMBOAT

Mozart & Rossini

SUMMER FESTIVAL 2021

BARBER OF SEVILLE | MARRIAGE OF FIGARO
MAGIC FLUTE | CLEMENZA DI TITO

APPLY

Program Dates:
July 19 - August 15, 2021
Apply at [YAPtracker.com](#)
For more info visit
[operasteamboat.org/institute](#)

CONTACT

Andres Cladera,
General and Artistic Director
andres@operasteamboat.org

AUDITIONS

December 5th - Northeastern Illinois University (Chicago)
December 9th - Lamont School of Music (Denver)
December 12th and 13th - OPERA America (NYC)

COVID-19 AUDITION PLAN

Upload video recordings to YouTube. Send video links, resumes, and headshot to Andres Cladera.

USC THORNTON SCHOOL OF MUSIC

University of Southern California

As the music profession changes, the USC Thornton School of Music offers an innovative education that prepares students for careers at the highest level as performers, composers, educators, and industry leaders. We do this while making the most of our location in Los Angeles, the nation's center for creativity and original art of all kinds.

LOCATION 3450 Watt Way, TMC 200
Los Angeles, CA 90089-0851
UNITED STATES
music.usc.edu/

ADMISSIONS 213-740-8986
uscmusic@usc.edu

Audition Requirements [Audition Requirements](#)

FINANCIAL INFORMATION

[Tuition & Fees](#) / [Financial Aid & Scholarships](#)

CAREER / POST-GRADUATION ASSISTANCE

Various career-related courses are available for enrollment and one-on-one mentorship with faculty is a central aspect of the USC Thornton experience. The USC Career Center offers career services to current students and recent alumni.

USC Thornton

School of Music

KEY STATISTICS (college level and above)

1000 music students

Music Faculty: 90 full time, 90 adjunct

AREAS OF STUDY

Arts Leadership • Brass • Collaborative Piano
• Composition (Performance) • Early Music • Jazz
Studies & Contemporary Media • Music Business
• Music Technology (including Production)
• Musicology • Organ • Piano • Strings • Vocal
Arts/Opera • Winds & Percussion • Choral & Sacred
Music • Classical Guitar • Community Music • Music
Industry • Music Production • Music Teaching
& Learning • Popular Music Performance
• Screen Scoring

DEGREE PROGRAMS

[Undergraduate Programs](#) / [Graduate Programs](#)

PANDEMIC & SAFETY

✓=Yes ✗=No ○=Under consideration

[Policies & Procedures for this school](#)

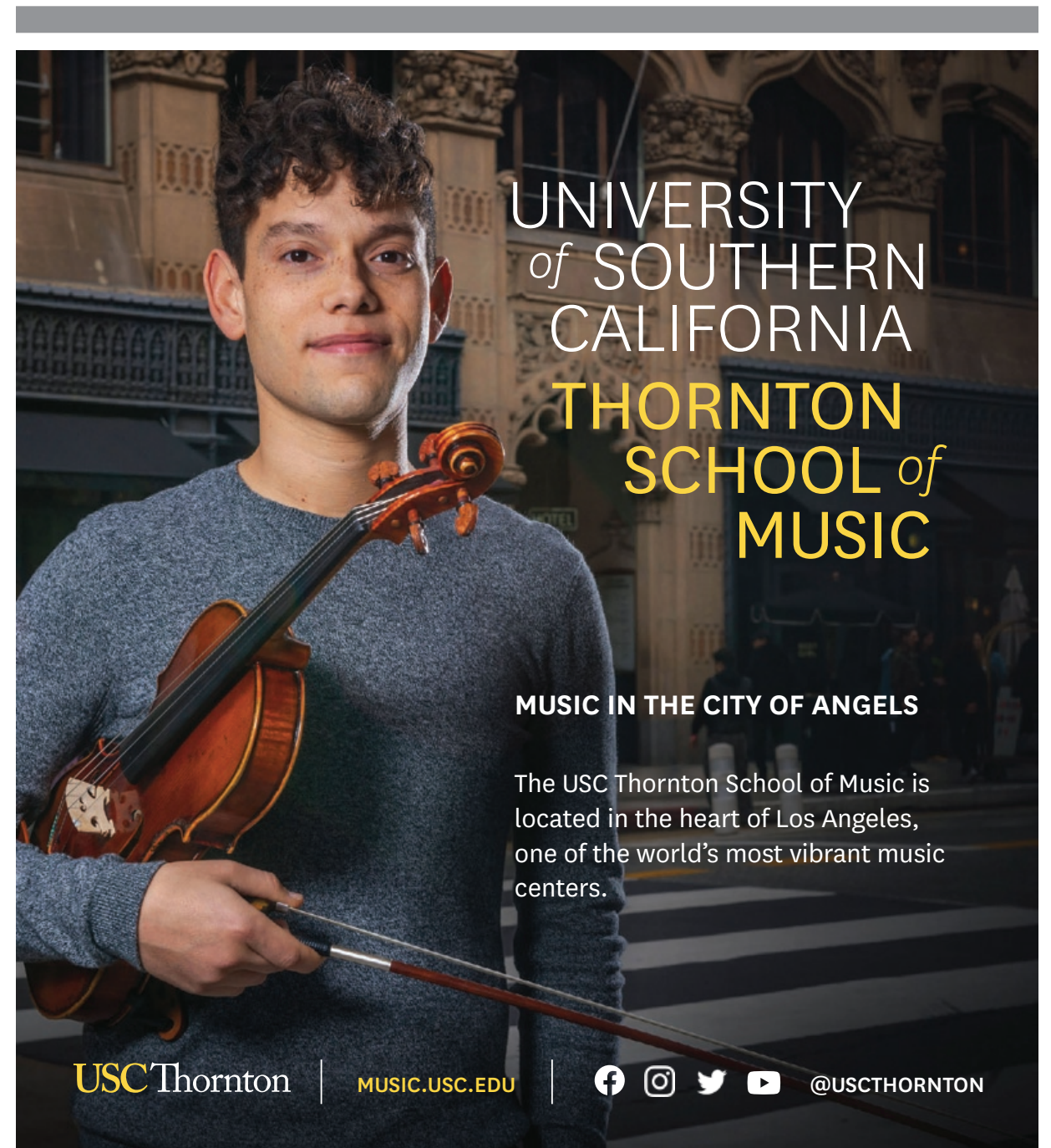
Is the school considering:

- ✓ *Shifting semester start and/or end dates?*
- ✗ *Changes to class and/or ensemble sizes?*
- ✓ *Shifting more coursework online?*
- ✓ *Requiring masks for students, faculty, staff?*
- ✓ *Reducing on-campus housing density, if provided?*

Does the school plan to test all for COVID-19 at term start, then periodically? ✓

Does the school plan changes to tuition and/or room & board fees? ✗

SOCIAL LINKS



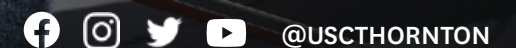
UNIVERSITY
of SOUTHERN
CALIFORNIA
THORNTON
SCHOOL of
MUSIC

MUSIC IN THE CITY OF ANGELS

The USC Thornton School of Music is located in the heart of Los Angeles, one of the world's most vibrant music centers.

USC Thornton

MUSIC.USC.EDU



THE UNIVERSITY OF TAMPA

WHAT DISTINGUISHES THIS SCHOOL?

UT is a medium-sized, private institution located in downtown Tampa, FL. Our student body consists of 9,000 undergraduate students from all 50 states and 132 countries. We offer over 200 areas of study, all of which focus on experiential education through hands-on learning, internships, study abroad & research opportunities.

LOCATION 401 West Kennedy Boulevard
Tampa, FL 33616
UNITED STATES
www.ut.edu/

ADMISSIONS 813-257-3489
admissions@ut.edu

Audition Requirements [Audition Requirements](#)

FINANCIAL INFORMATION
[Tuition & Fees](#) / [Financial Aid & Scholarships](#)

CAREER / POST-GRADUATION ASSISTANCE
[Career assistance](#)

KEY STATISTICS (college level and above)

150 music students
Music Faculty: 8 full time, 40 adjunct

AREAS OF STUDY

Brass • Composition (Performance) • Music Education • Music Technology (including Production) • Organ • Piano • Strings • Vocal Arts/Opera • Winds & Percussion

DEGREE PROGRAMS

[Undergraduate Programs](#) / [Graduate Programs](#)

Additional details: The vocal/instrumental options above are offered as tracks/concentrations for the B.A. in Music.

PANDEMIC & SAFETY

✓=Yes ✗=No ○=Under consideration
[Policies & Procedures for this school](#)

Is the school considering:

- ✓ *Shifting semester start and/or end dates?*
- ✓ *Changes to class and/or ensemble sizes?*
- *Shifting more coursework online?*
- ✓ *Requiring masks for students, faculty, staff?*
- ✗ *Reducing on-campus housing density, if provided?*

Does the school plan to test all for COVID-19 at term start, then periodically? ✗

Does the school plan changes to tuition and/or room & board fees? ✗

SOCIAL LINKS     

WEITZENHOFFER FAMILY COLLEGE OF FINE ARTS

University of Oklahoma

WHAT DISTINGUISHES THIS SCHOOL?

The most comprehensive college of fine arts in the state. Teems with innovation and excellence with support from its supplemental graduate certificate in Arts Management and Entrepreneurship and national Arts Incubation Lab. Its recent alumni work at all levels of the market, and have won Academy, Tony, Emmy, and Grammy Awards.

LOCATION 540 Parrington Oval, Suite 122
Norman, OK 73069
UNITED STATES
www.ou.edu/finearts

ADMISSIONS 405-325-7374
afung@ou.edu

FINANCIAL INFORMATION
[Tuition & Fees](#)

CAREER / POST-GRADUATION ASSISTANCE

College of Fine Arts partners with the Price College of Business in providing a comprehensive structure of courses designed to develop the skills needed for careers in the arts. This includes preparation for the spectrum of careers and opportunities in this dynamic 21st century marketplace.

KEY STATISTICS (School of Music only; college level and above)

450 music students
Music Faculty: 49 full time, 23 adjunct

AREAS OF STUDY

Arts Leadership • Brass • Collaborative Piano • Composition (Performance) • Jazz Studies & Contemporary Media • Music Business • Music Education • Music Technology (including Production) • Musicology • Organ • Piano • Strings

DEGREE PROGRAMS

[Undergraduate Programs](#) / [Graduate Programs](#)

ONLINE COURSES

[Online courses information](#)

PANDEMIC & SAFETY

✓=Yes ✗=No ○=Under consideration

Is the school considering:

- ✗ *Shifting semester start and/or end dates?*
- ✓ *Changes to class and/or ensemble sizes?*
- *Shifting more coursework online?*
- *Requiring masks for students, faculty, staff?*
- ✓ *Reducing on-campus housing density, if provided?*

Does the school plan to test all for COVID-19 at term start, then periodically? ○

Does the school plan changes to tuition and/or room & board fees? ○

SOCIAL LINKS   

WESTMINSTER CHOIR COLLEGE

Rider University

For current information, please [see this school's website](#).

YALE SCHOOL OF MUSIC

Yale University

WHAT DISTINGUISHES THIS SCHOOL?

At the Yale School of Music, we prepare exceptional students for service to the profession and to society. The School fosters a vibrant musical environment where graduate-level performers and composers realize their highest artistic potential with an internationally distinguished faculty. A graduate professional school for students of exceptional ability, the School offers exceptional musical training as well as the opportunity for students to participate in the rich intellectual life of Yale University to develop and pursue interests in areas outside of their majors.

LOCATION 98 Wall Street
PO Box 208246
New Haven, CT 06520-8246
UNITED STATES
music.yale.edu/

ADMISSIONS 203-432-4155
gradmusic.admissions@yale.edu

Audition Requirements [Audition Requirements](#)

FINANCIAL INFORMATION
[Tuition & Fees](#) / [Financial Aid & Scholarships](#)

CAREER / POST-GRADUATION ASSISTANCE
[Career assistance](#)

Yale SCHOOL OF MUSIC

KEY STATISTICS (college level and above)

200 music students

Music Faculty: 35 full time, 30 adjunct

AREAS OF STUDY

Brass • Composition (Performance) • Conducting
• Early Music • Organ • Piano • Strings • Vocal Arts/
Opera • Winds & Percussion • Conducting (Choral)
• Conducting (Orchestral) • Guitar • Harp
• Harpsichord

DEGREE PROGRAMS

[Undergraduate Programs](#) / [Graduate Programs](#)

Additional details: Master of Music; Master of Musical Arts; Doctor of Musical Arts; Artist Diploma; Certificate in Performance; BA/MM

ADDITIONAL PROGRAMS

(non-matriculating/prep)

[Norfolk Chamber Music Festival & Yale Summer School of Music](#) / [The Collection of Musical Instruments](#)

PANDEMIC & SAFETY

✓=Yes ✗=No ○=Under consideration

[Policies & Procedures for this school](#)

Is the school considering:

✗ *Shifting semester start and/or end dates?*

✓ *Changes to class and/or ensemble sizes?*

✓ *Shifting more coursework online?*

✓ *Requiring masks for students, faculty, staff?*

✓ *Reducing on-campus housing density, if provided?*

Does the school plan to test all for COVID-19 at term start, then periodically? ✓

Does the school plan changes to tuition and/or room & board fees? ✗

SOCIAL LINKS



Yale SCHOOL OF MUSIC

The stage is yours.

Students at the Yale School of Music are driven professional artists who aim to deepen their music-making and further their careers under the mentorship of a distinguished faculty and with the benefit of a full-tuition award and living stipend.

With unsurpassed resources and state-of-the-art facilities, Yale helps students activate their imaginations and realize their exceptional promise. **At Yale, music is everywhere.**

music.yale.edu

In addition to the Music Schools featured in this special report, the [Musical America database](#) of more than 1200 music schools worldwide is free of charge for the month of September 2020!

[A Guide to Music Schools](#)

View the 2020–21 Guide online along with information about additional schools.

[Conservatories as Good Citizens: Four Success Stories](#)

[Where Training in the Arts Meets Training for Life](#)

[Remote Music Lessons, in Real Time and Almost-Real Time](#)

[Of Shrinking Pools and Expanding Puddles of Opportunity](#)

In The Next Issue...

Summer Camps, Institutes & Programs

The Musical America Guide

Coming 3 November 2020

Questions? Email info@musicalamerica.com

Advertiser Index

Blair School of Music at Vanderbilt University.....	15
Boston Conservatory at Berklee	4
Crane School of Music, SUNY Potsdam	19
The Glenn Gould School.....	12
The Hartt School, University of Hartford	14
Indiana University Jacobs School of Music.....	16
JAM MUSIC LAB Private University	8
The Juilliard School.....	18
Longy School of Music of Bard College	20
Manhattan School of Music	22
Northeastern University	33
Oberlin College & Conservatory	39
Opera Steamboat.....	39
Peabody Conservatory of The Johns Hopkins University	27
Pepperdine University.....	8
San Francisco Conservatory of Music (SFCM)	19
The Shepherd School of Music at Rice University.....	15
The Tianjin Juilliard School.....	32
UCLA Herb Alpert School of Music.....	17
UNC School of the Arts	38
University of Cincinnati College—Conservatory of Music (CCM).....	34
University of Denver Lamont School of Music	21
University of Southern California Thornton School of Music	40
University of Tampa Department of Music.....	13
Yale School of Music	42

Stephanie Challenger
Publisher and Managing Editor

Susan Elliott
Editor, Special Reports
editor@musicalamerica.com

Advertising
609-448-3346 ■ info@musicalamerica.com

Frances Wan
Design Director | Database Publishing Specialist

Howard Roth
Business Consultant

Clive Paget
Features Editor, Musical America Directory

Bill Esposito
Manager of Listing Services
listings@musicalamerica.com

Carolyn Eychenne (Europe)
Advertising Sales Representative
33.1.39.58.14.01 ■ carolyn@eychenne.me

Andrea Rancati (Italy)
Advertising Sales Representative
39.02.703.00088 ■ arancati@rancatinet.it

Debra Kraft
Account Coordinator
dkraft@musicalamerica.com

PUBLISHED BY

**Performing Arts
Resources, LLC**
Your source for news and information

PERFORMING ARTS RESOURCES, LLC
PO Box 1330, Hightstown, NJ 08520
609-448-3346 ■ info@musicalamerica.com