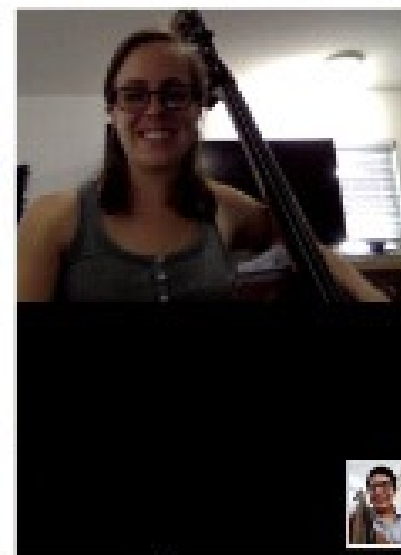
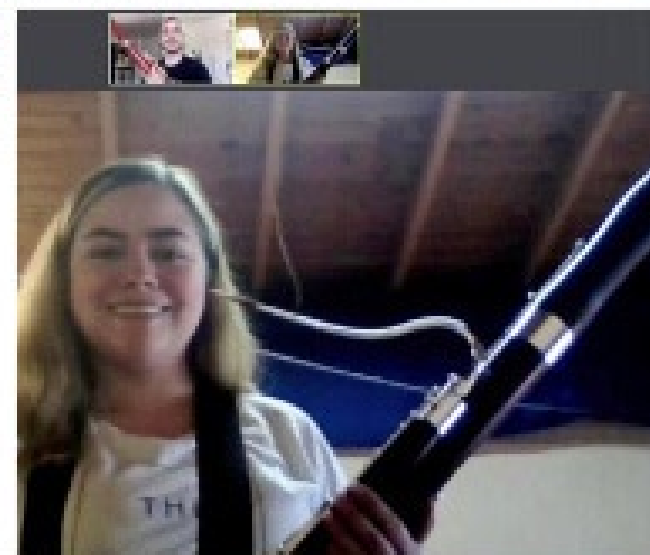


# The 2020-21 Guide to MUSIC SCHOOLS

*With special pandemic-related questions*

**musical  
america** September  
2020  
**SPECIAL REPORTS**



# MUSIC SCHOOLS

For those schools in the listings, you'll find detailed information on degrees offered, available areas of study, numbers of students and teachers, career and post-graduate assistance, and links to social media and financial information. We also asked each institution to describe its most "distinguishing characteristics." We relied on the schools to tell their own stories.

Academy of Vocal Arts.....	2	New World Symphony, America's Orchestral Academy .....	24
Arizona State University School of Music.....	2	Northeastern University Department of Music .....	25
Bard College Conservatory of Music .....	3	Oberlin Conservatory of Music.....	25
Bienen School of Music .....	3	Ohio State University School of Music .....	26
Blair School of Music .....	3	Opera Steamboat .....	26
Boston Conservatory at Berklee .....	4	Park University International Center for Music .....	26
Boston University School of Music.....	5	Peabody Conservatory.....	27
Sarah and Ernest Butler School of Music .....	5	Peck School of the Arts.....	28
Carnegie Mellon University School of Music .....	6	Pepperdine University .....	28
Cleveland Institute of Music .....	6	Purchase College Conservatory of Music.....	29
Aaron Copland School of Music .....	7	Royal College of Music.....	29
The Crane School of Music.....	7	San Francisco Conservatory of Music .....	30
Curtis Institute of Music .....	8	Shanghai Orchestra Academy (SOA) .....	30
Depauw University School of Music.....	9	Shenandoah Conservatory .....	31
Eastman School of Music.....	9	The Shepherd School of Music.....	31
Hanns Eisler School of Music Berlin .....	10	The Tianjin Juilliard School .....	32
Florida State University College of Music.....	10	UCLA Herb Alpert School of Music .....	33
Frost School of Music.....	11	University of California, Berkeley.....	33
Hugh A. Glauser School of Music .....	11	University of Cincinnati College—	
The Glenn Gould School		Conservatory of Music (CCM).....	34
at The Royal Conservatory of Music .....	12	University of Colorado Boulder.....	35
Guildhall School of Music & Drama .....	13	University of Florida .....	35
The Hartt School .....	14	University of Illinois School of Music .....	36
IClassical Academy .....	15	University of Massachusetts Amherst	
Indiana University Jacobs School of Music.....	16	Department of Music & Dance .....	36
JAM Music Lab University.....	17	University of Massachusetts Lowell	
The Juilliard School .....	18	Department of Music .....	37
Lamont School of Music .....	19	University of Michigan School of Music, Theatre & Dance.....	37
Longy School of Music.....	20	University of North Carolina School of The Arts .....	38
Lynn University Conservatory of Music.....	21	University of North Texas College of Music .....	39
Manhattan School of Music.....	22	USC Thornton School of Music .....	40
Mannes School of Music.....	23	The University of Tampa .....	41
Mason Gross School of The Arts .....	23	Weitzenhoffer Family College of Fine Arts .....	41
Robert McDuffie Center for Strings .....	23	Westminster Choir College .....	41
New England Conservatory .....	24	Yale School of Music .....	42

## Editor's Note



The Guide to Music Schools is always a substantial undertaking as well as a challenge to track down the right people who have the right answers to our (many) questions.

And that's under normal circumstances.

Needless to say, we are not in normal circumstances. Looking into what is still a very cloudy crystal ball, we have added a few practical, pandemic-caused questions this year: Will you be starting in the fall as planned? Later? Will classes shift online? Will masks be required on campus? What about testing? Will classes be smaller? Any academic changes in store? Will

on-campus housing be altered? Tuition change?

Virtually everyone is shifting at least in part to the online model, as well as requiring masks and altering class size for in-person schooling. Testing is also pretty universal; semester start dates remain the same and so does tuition in most cases. The one element that remains unchanged is academics.

And that's what is so impressive about this year's Guide entrants: Despite the pandemic, despite the herculean effort it has taken to shift courses online, maintain constant contact with students over the summer, adjust schedules, order pallets' worth of PPE, move beds in dorms, tables in dining room, desks in classrooms, etc. etc., training for young musicians continues, unabated.

Consider: a new generation of musicians who are not only learning their craft, but also developing new coping skills, learning how to go with the flow, and, perhaps most importantly, become video producers par excellence.

Talk about making lemonade.

Regards,

Susan Elliott  
Editor, Special Reports

COVER PHOTO CREDIT: Courtesy of New World Symphony/Iberacademy.



# The 2020-21 Guide to Music Schools

*With special pandemic-related questions*

PHOTO: University of North Carolina School of the Arts student Maitreyi Muralidharan, 17 August 2020.

## ACADEMY OF VOCAL ARTS

### WHAT DISTINGUISHES THIS SCHOOL?

The Academy of the Vocal Arts is the only nationally accredited conservatory in the United States exclusively devoted to the training of young opera singers, tuition-free. Artists from throughout the States and all over the world audition to study and perform in AVA's four-year program.

**LOCATION** 1920 Spruce Street  
Philadelphia, PA 19103  
UNITED STATES  
[www.avaopera.org/](http://www.avaopera.org/)

**ADMISSIONS** 215-735-1685  
[info@avaopera.org](mailto:info@avaopera.org)

**Audition Requirements** [Audition Requirements](#)

**FINANCIAL INFORMATION**  
[Tuition & Fees](#) / [Financial Aid & Scholarships](#)

**CAREER / POST-GRADUATION ASSISTANCE**  
At this time, no degrees are granted, but Artist Diplomas are awarded to those whom the AVA believes are ready for operatic and concert careers and have completed the minimum required classes. AVA is an accredited, non-degree-granting member of the National Association of Schools of Music. Course work completed at AVA does not compile credit-hours and is not transferable to other institutions.

**KEY STATISTICS** (college level and above)

**23** music students

**Music Faculty:** **20** full time, **3** adjunct

### AREAS OF STUDY

Vocal Arts/Opera

### DEGREE PROGRAMS

No degrees offered. Resident Artists graduate with Artist Diploma.

### PANDEMIC & SAFETY

✓=Yes X=No ○=Under consideration

**Is the school considering:**

○ *Shifting semester start and/or end dates?*

○ *Changes to class and/or ensemble sizes?*

○ *Shifting more coursework online?*

✓ *Requiring masks for students, faculty, staff?*

n/a *Reducing on-campus housing density, if provided?*

**Does the school plan to test all for COVID-19 at term start, then periodically?** ○

**Does the school plan changes to tuition and/or room & board fees?** ○

**SOCIAL LINKS**



## ARIZONA STATE UNIVERSITY SCHOOL OF MUSIC

For current information, please [see this school's website](#).



## BARD COLLEGE CONSERVATORY OF MUSIC

### Bard College

#### WHAT DISTINGUISHES THIS SCHOOL?

All Conservatory undergraduates pursue a five-year program leading to two degrees: the Bachelor of Music degree and the Bachelor of Arts degree in a field other than music. The Conservatory is now accepting applications for its new undergraduate voice program.

**LOCATION** 30 Campus Road  
Annandale-on-Hudson, NY 12504  
[www.bard.edu/conservatory/](http://www.bard.edu/conservatory/)

**ADMISSIONS** 845-752-2409  
[conservatoryadmission@bard.edu](mailto:conservatoryadmission@bard.edu)

#### Audition Requirements

[Undergraduate Double Degree requirements](#)  
[Graduate Vocal Arts Program requirements](#)  
[Graduate Conducting Program requirements](#)

#### FINANCIAL INFORMATION

[Tuition & Fees](#) / [Financial Aid & Scholarships](#)

#### CAREER / POST-GRADUATION ASSISTANCE

Our undergraduates tend to pursue graduate degrees from other major conservatories.

#### KEY STATISTICS (college level and above)

**150** music students

**Music Faculty:** **13** full time, **80** adjunct

#### AREAS OF STUDY

Brass • Collaborative Piano • Composition (Performance) • Conducting • Piano • Strings • Vocal Arts/Opera • Winds & Percussion

#### DEGREE PROGRAMS

[Undergraduate Programs](#) / [Graduate Vocal Arts / Graduate Conducting](#)  
[Post-Graduate Collaborative Piano Fellowship](#)

*Additional details:* Bachelor of Music degrees in performance through a double-degree program; instruments offered are: Pipa; Erhu; Guzheng; Ruan; Dizi; Sheng; Guqin; Chinese Percussion

#### PANDEMIC & SAFETY

✓=Yes ✗=No ○=Under consideration

[Policies & Procedures for this school](#)

#### Is the school considering:

✗ *Shifting semester start and/or end dates?*

✓ *Changes to class and/or ensemble sizes?*

✓ *Shifting more coursework online?*

✓ *Requiring masks for students, faculty, staff?*

✗ *Reducing on-campus housing density, if provided?*

**Does the school plan to test all for COVID-19 at term start, then periodically?** ✓

**Does the school plan changes to tuition and/or room & board fees?** ✗

#### SOCIAL LINKS



## BIENEN SCHOOL OF MUSIC

### Northwestern University

For current information, please [see this school's website](#).

## BLAIR SCHOOL OF MUSIC

### Vanderbilt University

#### WHAT DISTINGUISHES THIS SCHOOL?

Blair is a conservatory-level music program alongside a top-15 academic institution. It is one of the few exclusively undergraduate music schools in the country.

**LOCATION** 2400 Blakemore Avenue  
Nashville, TN 37212  
UNITED STATES  
[blair.vanderbilt.edu/](http://blair.vanderbilt.edu/)

**ADMISSIONS** 615-322-6181  
[blair.inquiries@vanderbilt.edu](mailto:blair.inquiries@vanderbilt.edu)

**Audition Requirements** [Audition Requirements](#)

#### FINANCIAL INFORMATION

[Tuition & Fees](#) / [Financial Aid & Scholarships](#)

#### CAREER / POST-GRADUATION ASSISTANCE

[Career assistance](#)

#### KEY STATISTICS (college level and above)

**220** music students

**Music Faculty:** **58** full time, **52** adjunct

#### AREAS OF STUDY

Brass • Composition (Performance) • Jazz Studies & Contemporary Media • Music Education • Piano • Strings • Vocal Arts/Opera • Winds & Percussion

#### DEGREE PROGRAMS

[Undergraduate Programs](#)

*Additional details:* Bachelor of Music in: Performance; Composition; Jazz Studies; Integrated Studies; Bachelor of Music and MBA; M.Ed.; Bachelor of Musical Arts

#### PANDEMIC & SAFETY

✓=Yes ✗=No ○=Under consideration

[Policies & Procedures for this school](#)

#### Is the school considering:

✓ *Shifting semester start and/or end dates?*

✓ *Changes to class and/or ensemble sizes?*

✓ *Shifting more coursework online?*

✓ *Requiring masks for students, faculty, staff?*

✓ *Reducing on-campus housing density, if provided?*

**Does the school plan to test all for COVID-19 at term start, then periodically?** ○

**Does the school plan changes to tuition and/or room & board fees?** ✗

#### SOCIAL LINKS





# BOSTON CONSERVATORY AT BERKLEE

## WHAT DISTINGUISHES THIS SCHOOL?

Boston Conservatory at Berklee is internationally recognized as an innovative leader among conservatory programs focused on elevating every aspect of the performing arts.

## LOCATION

8 Fenway  
Boston, MA 02215  
[bostonconservatory.berklee.edu/](http://bostonconservatory.berklee.edu/)

## ADMISSIONS

617-912-9153  
[conservatoryadmissions@berklee.edu](mailto:conservatoryadmissions@berklee.edu)

## Audition Requirements

[Audition Requirements](#)

## FINANCIAL INFORMATION

[Tuition & Fees](#) / [Financial Aid & Scholarships](#)

## CAREER / POST-GRADUATION ASSISTANCE

The Berklee Career Center provides expert guidance, cutting-edge resources, and professional development experiences to help our diverse body of students achieve their career goals.



## KEY STATISTICS (college level and above)

**409** music students

**Music Faculty:** **43** full time, **71** adjunct

## AREAS OF STUDY

Brass • Collaborative Piano • Composition (Performance) • Conducting • Music Education • Piano • Strings • Vocal Arts/Opera • Winds & Percussion • Marimba • Musical Theater • Contemporary Classical Music • Vocal Pedagogy • Musical Theater Vocal Pedagogy

## DEGREE PROGRAMS

[Undergraduate Programs](#) / [Graduate Programs](#)

## ADDITIONAL PROGRAMS

(non-matriculating/prep)

[Summer Programs](#)

[Extension Programs](#)

## PANDEMIC & SAFETY

✓=Yes ✗=No ○=Under consideration

### Is the school considering:

✗ *Shifting semester start and/or end dates?*

✓ *Changes to class and/or ensemble sizes?*

✓ *Shifting more coursework online?*

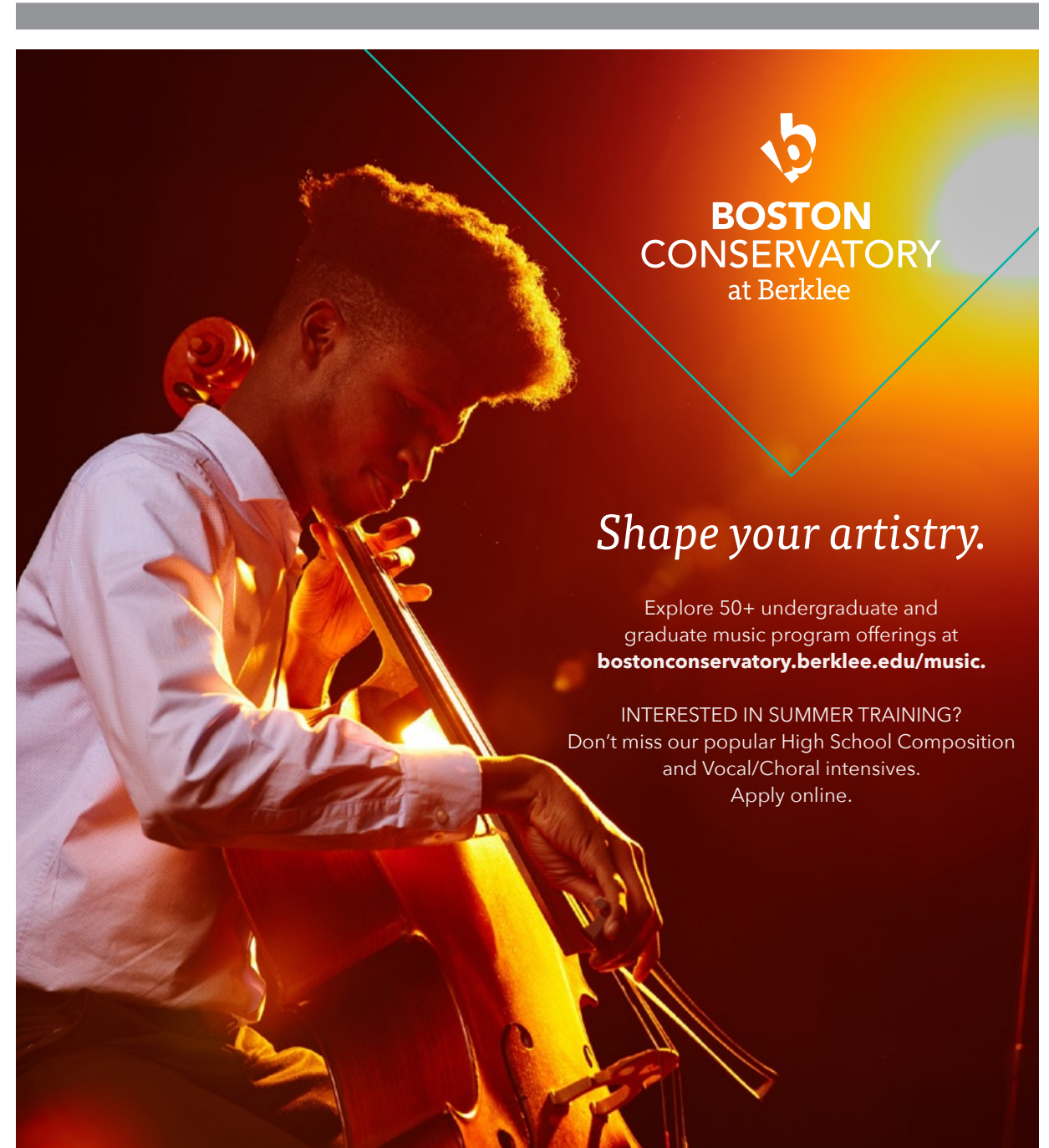
✓ *Requiring masks for students, faculty, staff?*

n/a *Reducing on-campus housing density, if provided?*

**Does the school plan to test all for COVID-19 at term start, then periodically? ✓**

**Does the school plan changes to tuition and/or room & board fees? ✓**

## SOCIAL LINKS



**BOSTON  
CONSERVATORY**  
at Berklee

*Shape your artistry.*

Explore 50+ undergraduate and graduate music program offerings at  
**[bostonconservatory.berklee.edu/music](http://bostonconservatory.berklee.edu/music)**.

INTERESTED IN SUMMER TRAINING?  
Don't miss our popular High School Composition and Vocal/Choral intensives.  
Apply online.

## BOSTON UNIVERSITY SCHOOL OF MUSIC

### WHAT DISTINGUISHES THIS SCHOOL?

The Boston University School of Music is a community of academically and artistically extraordinary musicians within a major research university located in one of the great music capitals of America. We are committed to the highest artistic and professional standards in performance, composition, music education, and musicology.

**LOCATION** 855 Commonwealth Avenue  
Boston, MA 02215  
UNITED STATES  
[www.bu.edu/cfa/](http://www.bu.edu/cfa/)

**ADMISSIONS** 617-353-3341  
[cfamusic@bu.edu](mailto:cfamusic@bu.edu)

**Audition Requirements** [Audition Requirements](#)

### FINANCIAL INFORMATION

[Tuition & Fees](#) / [Financial Aid & Scholarships](#)

### CAREER / POST-GRADUATION ASSISTANCE

Throughout the year, Boston University School of Music offers a series of career development workshops taught by alumni and professionals in their field. Career assistance links: [bu.edu/careers](http://bu.edu/careers) and [bu.edu/cfa/current-students/leadership-careers](http://bu.edu/cfa/current-students/leadership-careers)

### KEY STATISTICS (college level and above)

**500** music students

**Music Faculty:** **70** full time, **88** adjunct

### AREAS OF STUDY

Brass • Collaborative Piano • Composition (Performance) • Conducting • Early Music • Jazz Studies & Contemporary Media • Music Education • Music Technology (including Production) • Musicology • Organ • Piano • Strings • Vocal Arts/Opera • Winds & Percussion

### DEGREE PROGRAMS

[Undergraduate Programs](#) / [Graduate Programs](#)

### ONLINE COURSES

[Online courses information](#)

### PANDEMIC & SAFETY

✓=Yes ✗=No ○=Under consideration

[Policies & Procedures for this school](#)

#### Is the school considering:

✗ *Shifting semester start and/or end dates?*

✓ *Changes to class and/or ensemble sizes?*

✓ *Shifting more coursework online?*

✓ *Requiring masks for students, faculty, staff?*

✓ *Reducing on-campus housing density, if provided?*

**Does the school plan to test all for COVID-19 at term start, then periodically?** ✓

**Does the school plan changes to tuition and/or room & board fees?** ✗

### SOCIAL LINKS



## SARAH AND ERNEST BUTLER SCHOOL OF MUSIC

The University of Texas at Austin

### WHAT DISTINGUISHES THIS SCHOOL?

The Butler School of Music at The University of Texas at Austin offers comprehensive undergraduate and graduate programs designed to prepare artists, thinkers, makers and teachers ready and able to make profound contributions to the future of music.

**LOCATION** 2406 Robert Dedman Drive  
Stop E3100  
Austin, TX 78712-1555  
UNITED STATES  
[music.utexas.edu/](http://music.utexas.edu/)

**ADMISSIONS** 512-471-7764  
[uga@mail.music.utexas.edu](mailto:uga@mail.music.utexas.edu)

**Audition Requirements** [Audition Requirements](#)

### FINANCIAL INFORMATION

[Tuition & Fees](#) / [Financial Aid & Scholarships](#)

### CAREER / POST-GRADUATION ASSISTANCE

Fine Arts Career Services offers resources tailored to the College of Fine Arts undergraduate and graduate student body. Arts-career advisors work extensively with students to prepare them for an increasingly competitive industry. Graduation isn't the end of a student's relationship with FACS. The office remains accessible to alumni of the college for life. [Visit for more information](#). Career advising and planning services are also available from the University's [Center for Strategic Advising & Career Counseling](#).

### KEY STATISTICS (college level and above)

**610** music students

**Music Faculty:** **85** full time, **10** adjunct

### AREAS OF STUDY

Brass • Collaborative Piano • Composition (Performance) • Conducting • Early Music • Jazz Studies & Contemporary Media • Music Education • Musicology • Organ • Piano • Strings • Vocal Arts/Opera • Winds & Percussion • Chamber Music • Ethnomusicology • Literature and Pedagogy • Music Theory • Opera Coaching • Opera Directing

### DEGREE PROGRAMS

[Undergraduate Programs](#) / [Graduate Programs](#)

*Additional details:* Bachelor of Arts; Bachelor of Music; Master of Music; Artist Diploma; Doctor of Musical Arts; Doctor of Philosophy

### PANDEMIC & SAFETY

✓=Yes ✗=No ○=Under consideration

[Policies & Procedures for this school](#)

#### Is the school considering:

✗ *Shifting semester start and/or end dates?*

✓ *Changes to class and/or ensemble sizes?*

✓ *Shifting more coursework online?*

✓ *Requiring masks for students, faculty, staff?*

✓ *Reducing on-campus housing density, if provided?*

**Does the school plan to test all for COVID-19 at term start, then periodically?** ✗

**Does the school plan changes to tuition and/or room & board fees?** ✗

### SOCIAL LINKS



## CARNEGIE MELLON UNIVERSITY SCHOOL OF MUSIC

### WHAT DISTINGUISHES THIS SCHOOL?

The School of Music combines the strengths of a conservatory with those of a global research university. Students are a part of a diverse fine arts community on campus and in the city of Pittsburgh.

**LOCATION** 5000 Forbes Avenue  
Pittsburgh, PA 15213  
UNITED STATES  
[www.cmu.edu/cfa/music/](http://www.cmu.edu/cfa/music/)

### ADMISSIONS

412-268-4118  
[music-admissions@andrew.cmu.edu](mailto:music-admissions@andrew.cmu.edu)

**Audition Requirements** [Audition Requirements](#)

### FINANCIAL INFORMATION

[Tuition & Fees](#) / [Financial Aid & Scholarships](#)

### CAREER / POST-GRADUATION ASSISTANCE

Our distinguished alumni populate the ranks of the world's most prestigious orchestras, opera companies, and faculties including: the New York Philharmonic, Chicago Symphony Orchestra, The Metropolitan Opera, Harvard University, Prague Philharmonia, Oberlin College & Conservatory, Boston Pops, BBC Orchestras, Lyric Opera of Chicago, and many more.

### KEY STATISTICS (college level and above)

**450** music students  
**Music Faculty:** **35** full time, **51** adjunct

### AREAS OF STUDY

Brass • Collaborative Piano • Composition (Performance) • Conducting • Music Education • Music Technology (including Production) • Piano • Strings • Vocal Arts/Opera • Winds & Percussion • Music Entrepreneurship • Orchestral Studies

### DEGREE PROGRAMS

[Undergraduate Programs](#) / [Graduate Programs](#)

*Additional details:* Interdisciplinary degrees (BXA)

### PANDEMIC & SAFETY

✓=Yes ✗=No ○=Under consideration

[Policies & Procedures for this school](#)

#### Is the school considering:

- ✗ *Shifting semester start and/or end dates?*
- *Changes to class and/or ensemble sizes?*
- ✓ *Shifting more coursework online?*
- ✓ *Requiring masks for students, faculty, staff?*
- ✓ *Reducing on-campus housing density, if provided?*

**Does the school plan to test all for COVID-19 at term start, then periodically?** ○

**Does the school plan changes to tuition and/or room & board fees?** ✗

### SOCIAL LINKS



## CLEVELAND INSTITUTE OF MUSIC

### WHAT DISTINGUISHES THIS SCHOOL?

CIM is an independent conservatory known for superior orchestral, chamber music, composition, piano, and voice programs at both the undergraduate and graduate levels. Many of its faculty are members of The Cleveland Orchestra.

**LOCATION** 11021 East Boulevard  
Cleveland, OH 44106  
UNITED STATES  
[www.cim.edu/](http://www.cim.edu/)

**ADMISSIONS** 216-795-3107  
[admission@cim.edu](mailto:admission@cim.edu)

**Audition Requirements** [Audition Requirements](#)

### FINANCIAL INFORMATION

[Tuition & Fees](#) / [Financial Aid & Scholarships](#)

### CAREER / POST-GRADUATION ASSISTANCE

For much of its nearly 100-year history, CIM's individual faculty members have engaged in career-focused coaching of students and alumni. [The CIM Center for Innovative Musicianship \(CIM<sup>2</sup>\)](#) cements these tremendous career resources by building an educational framework, including the coursework and experiential learning necessary for successful career development.

### KEY STATISTICS (college level and above)

**350** music students  
**Music Faculty:** **29** full time, **80** adjunct

### AREAS OF STUDY

Brass • Collaborative Piano • Composition (Performance) • Conducting • Organ • Piano • Strings • Vocal Arts/Opera • Winds & Percussion • Classical Guitar

### DEGREE PROGRAMS

[Undergraduate Programs](#) / [Graduate Programs](#)

*Additional details:* Music Theory (as an undergraduate double major only); Suzuki Pedagogy (master's program only); minor and dual degree programs offered in association with Case Western Reserve University

### PANDEMIC & SAFETY

✓=Yes ✗=No ○=Under consideration

[Policies & Procedures for this school](#)

#### Is the school considering:

- ✓ *Shifting semester start and/or end dates?*
- ✓ *Changes to class and/or ensemble sizes?*
- ✓ *Shifting more coursework online?*
- ✓ *Requiring masks for students, faculty, staff?*
- ✗ *Reducing on-campus housing density, if provided?*

**Does the school plan to test all for COVID-19 at term start, then periodically?** ○

**Does the school plan changes to tuition and/or room & board fees?** ✗

### SOCIAL LINKS





## AARON COPLAND SCHOOL OF MUSIC

### CUNY Queens College

#### WHAT DISTINGUISHES THIS SCHOOL?

Queens College is a liberal arts college, boasting excellent programs in many areas, and the School of Music is the jewel in the crown. Students at the Aaron Copland School of Music get a world-class education at the center of the cultural universe for an impressively affordable tuition.

**LOCATION** Room 203, Queens College, CUNY  
65-30 Kissena Boulevard  
Queens, NY 11367-1597  
UNITED STATES  
[qcpages.qc.cuny.edu/music/](http://qcpages.qc.cuny.edu/music/)

**ADMISSIONS** 718-997-3800  
[Jane.cho@qc.cuny.edu](mailto:Jane.cho@qc.cuny.edu)

#### Audition Requirements

[Auditions are offered in February-March of each year.](#)

#### FINANCIAL INFORMATION

[Tuition & Fees](#) / [Financial Aid & Scholarships](#)

#### CAREER / POST-GRADUATION ASSISTANCE

ACSM has an excellent career placement record for the music education graduates (99% placement rate). We also offer Business of Music and Music Career Development courses to provide critical industry knowledge to our students.

#### KEY STATISTICS (college level and above)

**450** music students

**Music Faculty:** **25** full time, **59** adjunct

**20** scholarships awarded

#### AREAS OF STUDY

Brass • Composition (Performance) • Conducting  
• Early Music • Jazz Studies & Contemporary Media  
• Music Business • Music Education  
• Music Technology (including Production)  
• Musicology • Organ • Piano • Strings • Vocal Arts/  
Opera • Winds & Percussion

#### DEGREE PROGRAMS

Bachelor of Music, Music Education; Bachelor of Arts, General Music; Bachelor of Music, Music Performance  
[Undergraduate Programs](#) / [Graduate Programs](#)

#### ONLINE COURSES

[Online courses information](#)

#### PANDEMIC & SAFETY

✓=Yes ✗=No ○=Under consideration

[Policies & Procedures for this school](#)

#### Is the school considering:

✗ *Shifting semester start and/or end dates?*

✓ *Changes to class and/or ensemble sizes?*

✓ *Shifting more coursework online?*

✓ *Requiring masks for students, faculty, staff?*

n/a *Reducing on-campus housing density, if provided?*

**Does the school plan to test all for COVID-19 at term start, then periodically?** ○

**Does the school plan changes to tuition and/or room & board fees?** ○

#### SOCIAL LINKS



## THE CRANE SCHOOL OF MUSIC

### State University of New York Potsdam

#### WHAT DISTINGUISHES THIS SCHOOL?

Crane is an undergraduate-focused music school with attentive full-time faculty. We are part of SUNY Potsdam, an arts-centric school, with 575 music majors and where about 25% of students major in the arts. At Crane, students can choose from a wide variety of programs and majors.

#### LOCATION

44 Pierrepont Avenue  
Potsdam, NY 13676  
UNITED STATES  
[www.potsdam.edu/academics/crane-school-music](http://www.potsdam.edu/academics/crane-school-music)

**ADMISSIONS** 315-267-2812  
[auditions@potsdam.edu](mailto:auditions@potsdam.edu)

**Audition Requirements** [Audition Requirements](#)

#### FINANCIAL INFORMATION

[Tuition & Fees](#) / [Financial Aid & Scholarships](#)

#### CAREER / POST-GRADUATION ASSISTANCE

Students in each major work closely with faculty and staff at Crane and SUNY Potsdam's Career Services Office in formulating their post-graduation plans. Crane alumni include thousands of educators, performers, composers, researchers, leaders in the music industry, and musicians of renown, a network of graduates who can be found throughout North America and around the world.

#### KEY STATISTICS (college level and above)

**575** music students

**Music Faculty:** **74** full time, **18** adjunct

#### AREAS OF STUDY

Arts Leadership • Brass • Composition (Performance)  
• Music Business • Music Education • Musicology  
• Piano • Strings • Vocal Arts/Opera • Winds & Percussion • Music Theory

#### DEGREE PROGRAMS

[Undergraduate Programs](#) / [Graduate Programs](#)

#### ONLINE COURSES

[Online courses information](#)

#### PANDEMIC & SAFETY

✓=Yes ✗=No ○=Under consideration

[Policies & Procedures for this school](#)

#### Is the school considering:

○ *Shifting semester start and/or end dates?*

○ *Changes to class and/or ensemble sizes?*

✓ *Shifting more coursework online?*

✓ *Requiring masks for students, faculty, staff?*

✓ *Reducing on-campus housing density, if provided?*

**Does the school plan to test all for COVID-19 at term start, then periodically?** ○

**Does the school plan changes to tuition and/or room & board fees?** ○

#### SOCIAL LINKS



## CURTIS INSTITUTE OF MUSIC

### WHAT DISTINGUISHES THIS SCHOOL?

Curtis's celebrated faculty includes a high proportion of actively performing musicians whose experience provides students with a direct link to life as a professional musician today. With a student body of about 150 and 100 faculty members, all students receive highly personalized attention.

**LOCATION** 1726 Locust Street  
Philadelphia, PA 19103  
UNITED STATES  
[www.curtis.edu/](http://www.curtis.edu/)

**ADMISSIONS** 215-717-3117  
[chris.hodges@curtis.edu](mailto:chris.hodges@curtis.edu)

**Audition Requirements** [Audition Requirements](#)

### FINANCIAL INFORMATION

[Tuition & Fees](#) / [Financial Aid & Scholarships](#)

### CAREER / POST-GRADUATION ASSISTANCE

Curtis offers several professional bridge programs including fellowships for conductors and string quartets that provide performance and mentorship opportunities. The post-graduate [Community Artist Fellowship](#) works with underserved communities, providing training in teaching, interactive performance, and strategic planning.

**KEY STATISTICS** (college level and above)

**150** music students

**Music Faculty:** **3** full time, **111** adjunct

**150** scholarships awarded

## CURTIS INSTITUTE OF MUSIC (cont'd)

### AREAS OF STUDY

Brass • Composition (Performance) • Conducting  
• Organ • Piano • Strings • Vocal Arts/Opera • Winds  
& Percussion

### DEGREE PROGRAMS

[Undergraduate Programs](#) / [Master of Music in Opera](#)  
/ [Post-Baccalaureate Diploma](#) / [Professional Studies](#)  
[Certificate in Opera](#)

*Additional details:* Fellowship Programs: [Conducting Fellowship](#) / [String Quartet in Residence](#) / [Community Artist Fellowship program](#)

### ONLINE COURSES

[Online courses information](#)

### PANDEMIC & SAFETY

✓=Yes ✗=No ○=Under consideration

[Policies & Procedures for this school](#)

**Is the school considering:**

○ *Shifting semester start and/or end dates?*

○ *Changes to class and/or ensemble sizes?*

✓ *Shifting more coursework online?*

○ *Requiring masks for students, faculty, staff?*

✓ *Reducing on-campus housing density, if provided?*

**Does the school plan to test all for COVID-19 at term start, then periodically?** ✗

**Does the school plan changes to tuition and/or room & board fees?** ○

**SOCIAL LINKS**




**JAM MUSIC LAB UNIVERSITY**  
PRIVATE UNIVERSITY FOR JAZZ AND POPULAR MUSIC VIENNA

**BACHELOR & MASTER OF ARTS  
MUSIC OR MUSIC EDUCATION**  
STUDY NOW IN VIENNA - ONLINE & ON SITE!

**Study your music!** Our university for jazz & popular music offers you an innovative hybrid study program consisting of a combination of e-/online learning and onsite block seminars in Vienna/Austria. Get your bachelor or master's degree in music or music education which opens up international career opportunities in the music industry to you!

Just contact us: [www.jammusiclab.com](http://www.jammusiclab.com) | E [office@jammusiclab.com](mailto:office@jammusiclab.com) | P +43 1 946 68 46. We look forward to hearing from you!  
(Timezone CET = UTC +2 | EST +6 | CST +7)



**PEPPERDINE UNIVERSITY**  
**2020/21**  
*Music* **Auditions**

**NOVEMBER 14, 2020 (EARLY ACTION)**  
**JANUARY 23, 2020**  
**JANUARY 30, 2020**

**Schedule an audition:**  
[pepperdine.edu/music](http://pepperdine.edu/music)  
[fineartsadmissions@pepperdine.edu](mailto:fineartsadmissions@pepperdine.edu)  
**310.506.4111**



## DEPAUW UNIVERSITY

### WHAT DISTINGUISHES THIS SCHOOL?

One of the first schools of music, established 1884, Depauw University offers conservatory-style training paired with liberal arts. The four flexible degree programs are undergraduate only with abundant performing opportunities. Special programs offered are the [21st-Century Musician Initiative](#) and Green Guest Artists Series.

**LOCATION** 600 South Locust Street  
Greencastle, IN 46135  
UNITED STATES  
[www.depauw.edu/music/](http://www.depauw.edu/music/)

**ADMISSIONS** 765-658-4118  
[georgepalton@depauw.edu](mailto:georgepalton@depauw.edu)

**Audition Requirements** [Audition Requirements](#)  
NOTE: DePauw will provide a pianist and a brief rehearsal free of charge at on-campus auditions.

**FINANCIAL INFORMATION**  
[Tuition & Fees](#) / [Financial Aid & Scholarships](#)

**CAREER / POST-GRADUATION ASSISTANCE**  
The [Hubbard Center for Student Engagement](#) assists all students in post-graduate employment or study. Experiential learning that could include internships, international study, and additional performance opportunities is required.

**KEY STATISTICS** (college level and above)  
**125** music students  
**Music Faculty:** **20** full time, **29** adjunct

### AREAS OF STUDY

Brass • Jazz Studies & Contemporary Media  
• Music Education • Piano • Strings • Vocal Arts/Opera  
• Winds & Percussion

**DEGREE PROGRAMS**  
[Undergraduate Programs](#)

*Additional details:* Bachelor of Music; Bachelor of Music Education; Bachelor of Musical Arts; Bachelor of Arts in Music; Five-Year Bachelor of Music/ Bachelor of Arts Double Degree; Minor in Musical Theatre

**ADDITIONAL PROGRAMS**  
(non-matriculating/prep)  
[Young Artists Programs](#)  
[Community Programs](#)

**PANDEMIC & SAFETY**  
✓=Yes ✗=No ○=Under consideration  
[Policies & Procedures for this school](#)

**Is the school considering:**  
✓ *Shifting semester start and/or end dates?*  
○ *Changes to class and/or ensemble sizes?*  
○ *Shifting more coursework online?*  
✓ *Requiring masks for students, faculty, staff?*  
✓ *Reducing on-campus housing density, if provided?*  
**Does the school plan to test all for COVID-19 at term start, then periodically?** ○  
**Does the school plan changes to tuition and/or room & board fees?** ○

**SOCIAL LINKS**    

## EASTMAN SCHOOL OF MUSIC

University of Rochester

### WHAT DISTINGUISHES THIS SCHOOL?

Eastman is dedicated to the highest levels of artistry and scholarship and to the broad education of young musicians within the context of a university. Our students enjoy a challenging but nurturing environment that focuses on artistic excellence while encouraging the pursuit of individual paths and interests.

**LOCATION** 26 Gibbs Street  
Rochester, NY 14604  
UNITED STATES  
[www.esm.rochester.edu/](http://www.esm.rochester.edu/)

**ADMISSIONS** 800-388-9695  
[admissions@esm.rochester.edu](mailto:admissions@esm.rochester.edu)

**Audition Requirements** [Audition Requirements](#)

**FINANCIAL INFORMATION**  
[Tuition & Fees](#) / [Financial Aid & Scholarships](#)

**CAREER / POST-GRADUATION ASSISTANCE**  
[Career assistance](#)

**KEY STATISTICS** (college level and above)  
**900** music students  
**Music Faculty:** **135** full time, **50** adjunct

### AREAS OF STUDY

Arts Leadership • Brass • Collaborative Piano  
• Composition (Performance) • Conducting • Early Music • Jazz Studies & Contemporary Media • Music Business • Music Education • Music Technology (including Production) • Musicology • Organ • Piano • Strings • Vocal Arts/Opera • Winds & Percussion

**DEGREE PROGRAMS**  
[Undergraduate Programs](#) / [Graduate Programs](#)

**ADDITIONAL PROGRAMS**  
(non-matriculating/prep)  
[Institute for Music Leadership](#)

**ONLINE COURSES**  
[Online courses information](#)

**PANDEMIC & SAFETY**  
✓=Yes ✗=No ○=Under consideration  
**Is the school considering:**  
✓ *Shifting semester start and/or end dates?*  
✓ *Changes to class and/or ensemble sizes?*  
✓ *Shifting more coursework online?*  
✓ *Requiring masks for students, faculty, staff?*  
✓ *Reducing on-campus housing density, if provided?*  
**Does the school plan to test all for COVID-19 at term start, then periodically?** ○  
**Does the school plan changes to tuition and/or room & board fees?** ✗

**SOCIAL LINKS**    



## HANNS EISLER SCHOOL OF MUSIC BERLIN

### WHAT DISTINGUISHES THIS SCHOOL?

Musical excellence is our leitmotif and only the highest standards prevail. Exceptional musical personalities guarantee the quality of our musical education. We promote talent in its full-scale development—from the attainment of the finest technical precision to being ready to perform on stage.

### LOCATION

Hochschule für Musik Hanns Eisler Berlin  
Charlottenstr. 55  
D-10117 Berlin  
GERMANY  
[www.hfm-berlin.de/en/](http://www.hfm-berlin.de/en/)

**ADMISSIONS** +49 (0)30 688305-830  
[studienberatung@hfm-berlin.de](mailto:studienberatung@hfm-berlin.de)

**Audition Requirements** [Audition Requirements](#)

### FINANCIAL INFORMATION

[Tuition & Fees](#) / [Financial Aid & Scholarships](#)

### CAREER / POST-GRADUATION ASSISTANCE

[Eisleriana](#)

**KEY STATISTICS** (college level and above)

**500** music students

**Music Faculty:** **90** full time, **249** adjunct

**80** scholarships awarded

### AREAS OF STUDY

Brass • Collaborative Piano • Composition (Performance) • Conducting • Piano • Strings • Vocal Arts/Opera • Winds & Percussion • Stage Direction (Opera & Music Theatre) • Chamber Music • Repetiteur • Lied Interpretation for Pianists • Historical and Contemporary Compositional Technique • Electroacoustic Music • Production Dramaturgy for Music Theater

### DEGREE PROGRAMS

[Undergraduate Programs](#) / [Graduate Programs](#)

### ADDITIONAL PROGRAMS

(non-matriculating/prep)  
[Competitions](#)

### PANDEMIC & SAFETY

✓=Yes ✗=No ○=Under consideration

[Policies & Procedures for this school](#)

**Is the school considering:**

- *Shifting semester start and/or end dates?*
- *Changes to class and/or ensemble sizes?*
- *Shifting more coursework online?*
- *Requiring masks for students, faculty, staff?*
- n/a *Reducing on-campus housing density, if provided?*

**Does the school plan to test all for COVID-19 at term start, then periodically?** ○

**Does the school plan changes to tuition and/or room & board fees?** ✗

### SOCIAL LINKS



## FLORIDA STATE UNIVERSITY COLLEGE OF MUSIC

### WHAT DISTINGUISHES THIS SCHOOL?

FSU is home to one of the largest and most diverse music programs in the country, offering 25 degree programs at the undergraduate level alone. Our students participate in nearly 50 ensembles and perform in more than 500 concerts each year. Our graduates are highly successful beyond the classroom.

### LOCATION

122 North Copeland Street  
Tallahassee, FL 32306  
UNITED STATES  
[music.fsu.edu/](http://music.fsu.edu/)

### ADMISSIONS

850-644-6102  
[musicadmissions@fsu.edu](mailto:musicadmissions@fsu.edu)

**Audition Requirements** [Audition Requirements](#)

### FINANCIAL INFORMATION

[Tuition & Fees](#) / [Financial Aid & Scholarships](#)

### CAREER / POST-GRADUATION ASSISTANCE

Faculty mentors take an active role in placing and connecting their students to career opportunities, and a Career Liaison from the FSU Career Center works directly with the College of Music. The Allen Music Library sponsors workshops on résumé writing, and career development is a major focus of Music Entrepreneurship classes.

**KEY STATISTICS** (college level and above)

**1050** music students

**Music Faculty:** **90** full time, **5** adjunct

### AREAS OF STUDY

Brass • Collaborative Piano • Composition (Performance) • Conducting • Jazz Studies & Contemporary Media • Music Business • Music Education • Music Technology (including Production) • Musicology • Organ • Piano • Strings • Vocal Arts/Opera • Winds & Percussion • Arts Administration • Commercial Music • Choral Conducting • Wind Conducting • Historical Musicology • Ethnomusicology • Music Therapy • Opera Production • Piano Pedagogy • Piano Technology • Sacred Music

### DEGREE PROGRAMS

[Undergraduate Programs](#) / [Graduate Programs](#)

### ADDITIONAL PROGRAMS

(non-matriculating/prep)  
[Summer Camps](#)

### PANDEMIC & SAFETY

✓=Yes ✗=No ○=Under consideration

[Policies & Procedures for this school](#)

**Is the school considering:**

- ✗ *Shifting semester start and/or end dates?*
- *Changes to class and/or ensemble sizes?*
- *Shifting more coursework online?*
- ✓ *Requiring masks for students, faculty, staff?*
- ✓ *Reducing on-campus housing density, if provided?*

**Does the school plan to test all for COVID-19 at term start, then periodically?** ✓

**Does the school plan changes to tuition and/or room & board fees?** ✗

### SOCIAL LINKS



## FROST SCHOOL OF MUSIC

University of Miami

### WHAT DISTINGUISHES THIS SCHOOL?

The Frost School of Music is a dynamic place where exceptional students and faculty come together to transform the world of music. Brilliant performance, creativity, and scholarship are at our core.

**LOCATION** 5503 San Amaro Drive  
Coral Gables, FL 33146  
UNITED STATES  
[www.frost.miami.edu/](http://www.frost.miami.edu/)

**ADMISSIONS** 305-284-6168  
[admission.music@miami.edu](mailto:admission.music@miami.edu)

**Audition Requirements** [Undergraduate](#) / [Graduate](#)

### FINANCIAL INFORMATION

[Tuition & Fees](#) / [Financial Aid & Scholarships](#)

### CAREER / POST-GRADUATION ASSISTANCE

Frost School of Music dean, faculty, and professional staff provide music career advisement to students during all years of study. The majority of students also enroll in music business courses. The University of Miami's Toppel Career Center is also available for consultation.

**KEY STATISTICS** (college level and above)

**700** music students

**Music Faculty:** **80** full time, **40** adjunct

### AREAS OF STUDY

Arts Leadership • Brass • Collaborative Piano  
• Composition (Performance) • Conducting • Early Music • Jazz Studies & Contemporary Media • Music Business • Music Education • Music Technology (including Production) • Musicology • Piano • Strings • Vocal Arts/Opera • Winds & Percussion • Music Engineering Technology • Arts Presenting and Live Entertainment Management • Music Therapy • Choral Conducting

### DEGREE PROGRAMS

[Undergraduate Programs](#) / [Graduate Programs](#)

### ONLINE COURSES

[Online courses information](#)

### PANDEMIC & SAFETY

✓=Yes ✗=No ○=Under consideration

**Is the school considering:**

○ *Shifting semester start and/or end dates?*

○ *Changes to class and/or ensemble sizes?*

○ *Shifting more coursework online?*

○ *Requiring masks for students, faculty, staff?*

✓ *Reducing on-campus housing density, if provided?*

**Does the school plan to test all for COVID-19 at term start, then periodically?** ○

**Does the school plan changes to tuition and/or room & board fees?** ○

### SOCIAL LINKS



## HUGH A. GLAUSER SCHOOL OF MUSIC

Kent State University

### WHAT DISTINGUISHES THIS SCHOOL?

Through discovering, integrating, and applying knowledge in a comprehensive and diverse range of Bachelors, Masters, and Doctoral degree programs, we provide a dynamic learning environment that fosters artists, scholars, and teachers who will assume leadership roles in a global society.

**LOCATION** 1325 Theatre Drive E101  
Kent, OH 44242  
UNITED STATES  
[www.kent.edu/music](http://www.kent.edu/music)

**ADMISSIONS** 330-672-2172  
[schoolofmusic@kent.edu](mailto:schoolofmusic@kent.edu)

**Audition Requirements** [Audition Requirements](#)

### FINANCIAL INFORMATION

[Tuition & Fees](#) / [Financial Aid & Scholarships](#)

### CAREER / POST-GRADUATION ASSISTANCE

The College of the Arts at Kent State University, of which the School of Music is part, has a designated Career Advisor who serves both current students and alumni.

**KEY STATISTICS** (college level and above)

**350** music students

**Music Faculty:** **40** full time, **20** adjunct

### AREAS OF STUDY

Brass • Collaborative Piano • Composition (Performance) • Conducting • Jazz Studies & Contemporary Media • Music Education • Music Technology (including Production) • Piano • Vocal Arts/Opera • Winds & Percussion • Ethnomusicology • Music Theory • Strings (no harp)

### DEGREE PROGRAMS

[Undergraduate Programs](#) / [Graduate Programs](#)

### ONLINE COURSES

[Online courses information](#)

### PANDEMIC & SAFETY

✓=Yes ✗=No ○=Under consideration

[Policies & Procedures for this school](#)

**Is the school considering:**

✗ *Shifting semester start and/or end dates?*

✓ *Changes to class and/or ensemble sizes?*

✓ *Shifting more coursework online?*

✓ *Requiring masks for students, faculty, staff?*

✓ *Reducing on-campus housing density, if provided?*

**Does the school plan to test all for COVID-19 at term start, then periodically?** ✗

**Does the school plan changes to tuition and/or room & board fees?** ✗

### SOCIAL LINKS



# THE GLENN GOULD SCHOOL AT THE ROYAL CONSERVATORY OF MUSIC

## WHAT DISTINGUISHES THIS SCHOOL?

The success of our graduates, many of whom now have successful careers as concert and recording artists, is a testament to our focus on performance training. Committed to mentoring, our purposefully small school offers exceptional practice and performance spaces, and 50% more private lesson time with inspiring, well-known faculty.

## LOCATION

TELUS Centre for Performance and Learning  
273 Bloor Street West  
Toronto, ON M5S 1W2  
CANADA  
[www.rcmusic.com/ggs/home](http://www.rcmusic.com/ggs/home)

## ADMISSIONS

800-462-3815  
[glenngouldschool@rcmusic.ca](mailto:glenngouldschool@rcmusic.ca)

**Audition Requirements** [Audition Requirements](#)

## FINANCIAL INFORMATION

[Tuition & Fees](#) / [Financial Aid & Scholarships](#)

## CAREER / POST-GRADUATION ASSISTANCE

The [Rebanks Family Fellowship](#) and International Performance Residency Program is a one-year postgraduate program for artists on the cusp of a professional career.

## KEY STATISTICS (college level and above)

**130** music students

**Music Faculty:** 43 full time, 32 adjunct



THE GLENN GOULD SCHOOL

## AREAS OF STUDY

Brass • Organ • Piano • Strings • Vocal Arts/Opera  
• Winds & Percussion

## DEGREE PROGRAMS

[Undergraduate Programs](#) / [The Glenn Gould School — Artist Diploma Program](#) (two-year) / [The Rebanks Family Fellowship and International Performance Residency Program](#) (1 year)

*Additional details:* Bachelor of Music, Performance (Honours)

## ADDITIONAL PROGRAMS

(non-matriculating/prep)  
[The Phil and Eli Taylor Performance Academy for Young Artists](#) / [The RCM Certificate Program](#)

## ONLINE COURSES

[Online courses information](#)

## PANDEMIC & SAFETY

✓=Yes ✗=No ○=Under consideration

[Policies & Procedures for this school](#)

### Is the school considering:

✗ *Shifting semester start and/or end dates?*

✓ *Changes to class and/or ensemble sizes?*

✓ *Shifting more coursework online?*

○ *Requiring masks for students, faculty, staff?*

n/a *Reducing on-campus housing density, if provided?*

**Does the school plan to test all for COVID-19 at term start, then periodically?** ○

**Does the school plan changes to tuition and/or room & board fees?** ✗

## SOCIAL LINKS



This is your classroom.

## Study at The Glenn Gould School

Based in Toronto, we are a post-secondary institution with a focus on performance. Our school has **world-renowned faculty, outstanding performance spaces** such as Koerner Hall, and a **cap of 130 students**, each of whom receives **90 minutes** of individual studio instruction weekly.

**The Glenn Gould School offers degrees and diplomas for three levels of study:** Bachelor of Music, Performance (Honours)\*, the Artist Diploma (for post-Bachelor studies), and The Rebanks Family Fellowship and International Performance Residency (for post-graduate studies).

## Programs of Study

**The Temerty Orchestral Program**  
working with noted conductors such as Tania Miller and Gabor Takács-Nagy

**The Ihnatowycz Piano Program**  
under the leadership of James Anagnoson, Dean, includes distinguished artists and teachers John O'Connor and John Perry

**Vocal Studies and the Price Opera Program**  
with Adrienne Pieczonka, Chair



[rcmusic.com/ggs](http://rcmusic.com/ggs)



\* This institution has been granted a consent by the Minister of Training, Colleges and Universities to offer this program for a seven-year term starting October 12, 2017. Prospective students are responsible for satisfying themselves that the program and the degree will be appropriate to their needs (e.g., acceptable to potential employers, professional licensing bodies or other educational institutions.)



## THE UNIVERSITY OF TAMPA

### Innovate the Future of Tradition

- New state-of-the-art facility opening Fall 2020
- Residential campus in a growing, vibrant city
- Focus on experiential, undergraduate education
- Music programs in performance, theatre, education and technology

Learn more at [ut.edu/music](https://ut.edu/music).

## GUILDHALL SCHOOL OF MUSIC & DRAMA

### WHAT DISTINGUISHES THIS SCHOOL?

Guildhall School is one of the world's leading conservatories, highly regarded in the profession for intensive, dedicated training taught by renowned international teaching staff and through partnerships with the Barbican, London Symphony Orchestra, the BBC Symphony Orchestra, the Royal Opera House, and the Academy of Ancient Music.

**LOCATION** Silk Street, Barbican  
London EC2Y 8DT  
UNITED KINGDOM  
[www.gsmd.ac.uk/](http://www.gsmd.ac.uk/)

**ADMISSIONS** +44 (0)20 7382 7144  
[music@gsmd.ac.uk](mailto:music@gsmd.ac.uk)

**Audition Requirements**  
[Undergraduate](#) / [Postgraduate](#)

**FINANCIAL INFORMATION**  
[Tuition & Fees](#) / [Financial Aid & Scholarships](#)

**CAREER / POST-GRADUATION ASSISTANCE**  
Training combines academic rigor and artistic skill with a strong professional focus. All of our programs are closely engaged with the professions, through talks, workshops, mentoring, master classes, and performance collaborations.

**KEY STATISTICS** (college level and above)  
**738** music students  
**Music Faculty:** **5** full time, **629** adjunct

### AREAS OF STUDY

Brass • Collaborative Piano • Composition (Performance) • Conducting • Early Music • Jazz Studies & Contemporary Media • Music Business • Music Education • Musicology • Organ • Piano • Strings • Vocal Arts/Opera • Winds & Percussion

### DEGREE PROGRAMS

[Undergraduate Programs](#) / [Graduate Programs](#)

*Additional details:* Bachelor of Music Electronic Music; Master of Music/Master of Performance in Performance (Guildhall Artist Masters): Orchestral Artistry in association with the London Symphony Orchestra; MA in Music Therapy; MA in Opera Making & Writing in association with the Royal Opera House; PG Cert Performance Teaching; Research Degrees

**ADDITIONAL PROGRAMS**  
(non-matriculating/prep)  
[Youth & Adult Learning](#)

### PANDEMIC & SAFETY

✓=Yes ✗=No ○=Under consideration

**Is the school considering:**

- *Shifting semester start and/or end dates?*
- *Changes to class and/or ensemble sizes?*
- *Shifting more coursework online?*
- *Requiring masks for students, faculty, staff?*
- ✗ *Reducing on-campus housing density, if provided?*

**Does the school plan to test all for COVID-19 at term start, then periodically?** ○

**Does the school plan changes to tuition and/or room & board fees?** ✗

**SOCIAL LINKS**



# THE HARTT SCHOOL

University of Hartford

## WHAT DISTINGUISHES THIS SCHOOL?

The Hartt School is a truly collaborative environment where faculty embrace that success takes on endless forms. They get to know each student and guide them toward the future meant just for them.

**LOCATION** 200 Bloomfield Avenue  
West Hartford, CT 06117  
UNITED STATES  
[www.hartford.edu/hartt](http://www.hartford.edu/hartt)

**ADMISSIONS** 860-768-4465  
[harttadm@hartford.edu](mailto:harttadm@hartford.edu)

**Audition Requirements** [Audition Requirements](#)

## FINANCIAL INFORMATION

[Tuition & Fees](#) / [Financial Aid & Scholarships](#)

## CAREER / POST-GRADUATION ASSISTANCE

All degree programs at Hartt include career preparation coursework and undergraduate performance majors can choose a minor in arts management. The University of Hartford's career services office has a career counselor dedicated to the arts and resources to assist Hartt students in beginning their careers.

**KEY STATISTICS** (college level and above)

**400** music students

**Music Faculty:** **47** full time, **80** adjunct



## AREAS OF STUDY

Arts Leadership • Brass • Composition (Performance) • Conducting • Early Music • Jazz Studies & Contemporary Media • Music Business • Music Education • Music Technology (including Production) • Musicology • Piano • Strings • Vocal Arts/Opera • Winds & Percussion • Music Management • Acoustical Engineering and Music • Performing Arts Management • Music Theatre • Actor Training • Stage Management • Technical Theater • Ballet Pedagogy • Dance Performance

## DEGREE PROGRAMS

[Undergraduate Programs](#) / [Graduate Programs](#)

## ADDITIONAL PROGRAMS

(non-matriculating/prep)

[Hartt School Community Division](#)

## PANDEMIC & SAFETY

✓=Yes ✗=No ○=Under consideration

[Policies & Procedures for this school](#)

**Is the school considering:**

✗ *Shifting semester start and/or end dates?*

✓ *Changes to class and/or ensemble sizes?*

✓ *Shifting more coursework online?*

✓ *Requiring masks for students, faculty, staff?*

✓ *Reducing on-campus housing density, if provided?*

**Does the school plan to test all for COVID-19 at term start, then periodically? ✓**

**Does the school plan changes to tuition and/or room & board fees? ○**

## SOCIAL LINKS



# RISE CONFIDENTLY. EMERGE READY.



**AT THE HARTT SCHOOL**, we think the best way to learn and perfect your craft is by doing. That's why we put on more than 400 performances, recitals, lectures, and master classes each year. Through diverse coursework and close mentoring relationships with faculty, you can make your passion your profession.

## WHY HARTT?

- Mentorship from world-class faculty
- Master classes with cutting-edge ensembles
- Classes tailored especially for you
- Centrally located between Boston and New York City

# UNIVERSITY OF HARTFORD

THE HARTT SCHOOL

[hartford.edu/harttperformance](http://hartford.edu/harttperformance)



## ICLASSICAL ACADEMY

### WHAT DISTINGUISHES THIS SCHOOL?

Online Classical Music Academy offers more than 550 master classes and courses for violin, cello, piano, conducting, guitar, trumpet, music career and voice. Learn from teachers of different schools of music education; Russian, French, German, Italian and American, compare techniques and apply what serves you best.

**LOCATION** Rue de la Tour 10  
3963 Crans-Montana  
SWITZERLAND  
[iclassical-academy.com/](http://iclassical-academy.com/)

**ADMISSIONS** +39 3473319474  
[meira@iclassical-academy.com](mailto:meira@iclassical-academy.com)

### FINANCIAL INFORMATION

[Tuition & Fees](#)

**CAREER / POST-GRADUATION ASSISTANCE**  
[Career assistance](#)

**KEY STATISTICS** (college level and above)  
**2500** music students  
**Music Faculty:** 5 full time, 65 adjunct  
**25** scholarships awarded

### AREAS OF STUDY

Arts Leadership • Brass • Composition (Performance)  
• Conducting • Music Business • Music Education  
• Music Technology (including Production) • Piano  
• Strings • Vocal Arts/Opera • Winds & Percussion

## ICLASSICAL ACADEMY (cont'd)

### ADDITIONAL PROGRAMS

(non-matriculating/prep)

[Miriam Fried – Bach Sonatas and Partitas: Online Violin Course /](#)  
[The Musical Jewels—Courses to unlock and widen your theoretical and practical knowledge /](#)  
[Collection of Courses to Boost Technical and Music-Related Skills](#)

### ONLINE COURSES

[Online courses information](#)

### PANDEMIC & SAFETY

✓=Yes ✗=No ○=Under consideration

**Is the school considering:**

✗ *Shifting semester start and/or end dates?*

✗ *Changes to class and/or ensemble sizes?*

✓ *Shifting more coursework online?*

✗ *Requiring masks for students, faculty, staff?*

n/a *Reducing on-campus housing density, if provided?*

**Does the school plan to test all for COVID-19 at term start, then periodically?** ✗

**Does the school plan changes to tuition and/or room & board fees?** ○

### SOCIAL LINKS



## The Shepherd School of Music at Rice

The Shepherd School of Music at Rice University offers preprofessional training for musicians, combining the conservatory experience with the educational excellence of a renowned private university. Our illustrious faculty of artist-teachers dedicate themselves to the special talents and skills of each individual student.

*Robert Yekovich, Dean, The Shepherd School of Music*

### Faculty

**VIOLIN**  
Paul Kantor  
Cho-Liang Lin  
Kathleen Winkler

**VIOLA**  
James Dunham  
Ivo-Jan van der Werff

**CELLO**  
Norman Fischer  
Desmond Hoebig  
Brinton Averil Smith

**DOUBLE BASS**  
Paul Ellison  
Timothy Pitts

**FLUTE**  
Leone Buyse

**OBOE**  
Robert Atherholt

**CLARINET**  
Richie Hawley

**BASSOON**  
Benjamin Kamins

**HORN**  
William VerMeulen

**TRUMPET**  
Barbara Butler  
Charlie Geyer

**TROMBONE**  
Allen Barnhill

**TUBA**  
David Kirk

**PERCUSSION**  
Matthew Strauss

**HARP**  
Paula Page

**PIANO**  
Brian Connelly  
Jeanne Kierman

**SOPIANO**  
Sohyoung Park  
Jon Kimura Parker

**TRUMPET**  
Barbara Butler  
Charlie Geyer

**TROMBONE**  
Allen Barnhill

**TUBA**  
David Kirk

**VOICE**  
Stephen King  
Robin Rice  
Ana Maria Martínez

**OPERA STUDIES**  
Debra Dickinson  
Susan Lorette Dunn

**VOCAL COACHING**  
Bethany Self  
Karen Roethlisberger

**CONDUCTING**  
Thomas Jaber  
Larry Rachleff

**COMPOSITION and THEORY**  
Karim Al-Zand  
Damian Blättler  
Anthony Brandt

**ORCHESTRAL and CHAMBER REPERTOIRE**  
Joan DerHovsepian  
Eric Halen  
Thomas LeGrand

**LECTURERS**  
Mario Aschauer  
Karol Bennett  
Rachel Buchman

**CONDUCTING**  
Thomas Jaber  
Larry Rachleff

**COMPOSITION and THEORY**  
Karim Al-Zand  
Damian Blättler  
Anthony Brandt

**ORCHESTRAL and CHAMBER REPERTOIRE**  
Joan DerHovsepian  
Eric Halen  
Thomas LeGrand

**LECTURERS**  
Mario Aschauer  
Karol Bennett  
Rachel Buchman

**CONDUCTING**  
Thomas Jaber  
Larry Rachleff

**COMPOSITION and THEORY**  
Karim Al-Zand  
Damian Blättler  
Anthony Brandt

**ORCHESTRAL and CHAMBER REPERTOIRE**  
Joan DerHovsepian  
Eric Halen  
Thomas LeGrand

**LECTURERS**  
Mario Aschauer  
Karol Bennett  
Rachel Buchman

**CONDUCTING**  
Thomas Jaber  
Larry Rachleff

**COMPOSITION and THEORY**  
Karim Al-Zand  
Damian Blättler  
Anthony Brandt

**ORCHESTRAL and CHAMBER REPERTOIRE**  
Joan DerHovsepian  
Eric Halen  
Thomas LeGrand

**LECTURERS**  
Mario Aschauer  
Karol Bennett  
Rachel Buchman

**CONDUCTING**  
Thomas Jaber  
Larry Rachleff

**COMPOSITION and THEORY**  
Karim Al-Zand  
Damian Blättler  
Anthony Brandt

**LECTURERS**  
Mario Aschauer  
Karol Bennett  
Rachel Buchman

**CONDUCTING**  
Thomas Jaber  
Larry Rachleff

**COMPOSITION and THEORY**  
Karim Al-Zand  
Damian Blättler  
Anthony Brandt

**ORCHESTRAL and CHAMBER REPERTOIRE**  
Joan DerHovsepian  
Eric Halen  
Thomas LeGrand

**LECTURERS**  
Mario Aschauer  
Karol Bennett  
Rachel Buchman

**CONDUCTING**  
Thomas Jaber  
Larry Rachleff

**COMPOSITION and THEORY**  
Karim Al-Zand  
Damian Blättler  
Anthony Brandt



**RICE**

The Shepherd School of Music  
Rice University, Houston, TX  
[music.rice.edu](http://music.rice.edu)





# INDIANA UNIVERSITY JACOBS SCHOOL OF MUSIC

Indiana University

## WHAT DISTINGUISHES THIS SCHOOL?

The more than 1,500 students who study at the Jacobs School of Music benefit from the intensity and focus of a conservatory combined with the broad academic offerings of a major university. The breadth and number of performance opportunities are unparalleled in college music study.

**LOCATION** 1201 East Third Street  
Bloomington, IN 47405  
UNITED STATES  
[music.indiana.edu/](http://music.indiana.edu/)

**ADMISSIONS** 812-855-7998  
[musicadm@indiana.edu](mailto:musicadm@indiana.edu)

## Audition Requirements [Audition Requirements](#)

All auditions and interviews are held on the Bloomington campus. Only those applications received by the deadlines will be guaranteed an opportunity to audition.

## FINANCIAL INFORMATION

[Tuition & Fees](#) / [Financial Aid & Scholarships](#)

## CAREER / POST-GRADUATION ASSISTANCE

[Career assistance](#)

The OECD provides career advising, multiple online tools, an alumni mentorship program, departmental career days, mentorship, and digital publications. An undergraduate Certificate in Music Entrepreneurship (15 credits) is offered by the OECD in partnership with the Kelley School of Business.



## KEY STATISTICS (college level and above)

**1600** music students

**Music Faculty:** 175 full time, 30 adjunct

## AREAS OF STUDY

Brass • Collaborative Piano • Composition (Performance) • Conducting • Early Music • Jazz Studies & Contemporary Media • Music Business • Music Education • Music Technology (including Production) • Musicology • Organ • Piano • Strings • Vocal Arts/Opera • Winds & Percussion • Audio Engineering and Sound Production • Ballet • Chamber and Collaborative Music • Choral Conducting • Music Entrepreneurship

## DEGREE PROGRAMS

[Undergraduate Programs](#) / [Graduate Programs](#)

## ONLINE COURSES

[Online courses information](#)

## PANDEMIC & SAFETY

✓=Yes ✗=No ○=Under consideration

[Policies & Procedures for this school](#)

## Is the school considering:

✓ *Shifting semester start and/or end dates?*

○ *Changes to class and/or ensemble sizes?*

○ *Shifting more coursework online?*

✓ *Requiring masks for students, faculty, staff?*

✓ *Reducing on-campus housing density, if provided?*

**Does the school plan to test all for COVID-19 at term start, then periodically?** ○

**Does the school plan changes to tuition and/or room & board fees?** ○

## SOCIAL LINKS



## JACOBS SCHOOL OF MUSIC

Indiana University Bloomington

**16,000+**  
TALENTED  
ALUMNI

**175**  
WORLD-CLASS  
FULL-TIME  
FACULTY

**75%**  
OF STUDENTS  
RECEIVE  
SCHOLARSHIPS

## APPLICATION DEADLINES

Nov. 1, 2020 - Undergraduate

Dec. 1, 2020 - Graduate

Learn more at [music.indiana.edu](http://music.indiana.edu).



**UCLA** Herb Alpert  
School of Music



# THIS IS UCLA MUSIC

ETHNOMUSICOLOGY | GLOBAL JAZZ STUDIES | MUSIC | MUSICOLOGY | MUSIC INDUSTRY

The UCLA Herb Alpert School of Music is at the nexus of performance and scholarship. Offering programs in Ethnomusicology, Global Jazz Studies, Music, Musicology, and Music Industry, we invite the exploration of music in all of its diverse forms.

Study with renowned faculty in an intimate environment housed within a top research institution and discover the creative and professional opportunities that a global cultural capital like Los Angeles can provide.

SCHOOLOFMUSIC.UCLA.EDU



## JAM MUSIC LAB UNIVERSITY

### WHAT DISTINGUISHES THIS SCHOOL?

We are a pioneering university for jazz & popular music providing BA and MA degrees in a hybrid learning model consisting of online and on-site courses. We focus on our students' talents and creativity, no matter if they strive to be a composer, instrumentalist, singer, songwriter, producer, or educator.

**LOCATION** Gasometer C—Guglgasse 12  
1110 Vienna  
AUSTRIA  
[www.jammusiclab.com/](http://www.jammusiclab.com/)

**ADMISSIONS** +43 19466846  
[office@jammusiclab.com](mailto:office@jammusiclab.com)

**Audition Requirements** [Audition Requirements](#)

**FINANCIAL INFORMATION**  
[Tuition & Fees](#) / [Financial Aid & Scholarships](#)

**CAREER / POST-GRADUATION ASSISTANCE**  
We offer career aid to our students through our own artist agency and through external partnerships with venues, promoters, and broadcasters.

**KEY STATISTICS** (college level and above)  
**150** music students  
**Music Faculty:** **5** full time, **50** adjunct

### AREAS OF STUDY

Composition (Performance) • Jazz Studies & Contemporary Media • Music Education • Piano • Strings • Vocal Arts/Opera • Winds & Percussion • Popular Music • Vocal Arts Jazz / Pop

### DEGREE PROGRAMS

[Bachelor of Arts in Music](#) / [Bachelor of Arts in Music Education](#) / [Master of Arts in Music](#) / [Master of Arts in Music Education](#)

*Additional details:* Bachelor of Arts in Music; Bachelor of Arts in Music Education; Master of Arts in Music; Master of Arts in Music Education

### ONLINE COURSES

[Online courses information](#)

### PANDEMIC & SAFETY

✓=Yes ✗=No ○=Under consideration

[Policies & Procedures for this school](#)

### Is the school considering:

✗ Shifting semester start and/or end dates?

✓ Changes to class and/or ensemble sizes?

✓ Shifting more coursework online?

○ Requiring masks for students, faculty, staff?

n/a Reducing on-campus housing density, if provided?

**Does the school plan to test all for COVID-19 at term start, then periodically?** ✗

**Does the school plan changes to tuition and/or room & board fees?** ○

### SOCIAL LINKS





# THE JUILLIARD SCHOOL

Columbia & Barnard Colleges

## WHAT DISTINGUISHES THIS SCHOOL?

Since 1905 Juilliard has educated the world's foremost musicians, then dancers & actors; its Lincoln Center campus is a launching ground for artistic achievement, with a world-renowned faculty.

**LOCATION** 60 Lincoln Center Plaza  
New York, NY 10023  
UNITED STATES  
[www.juilliard.edu](http://www.juilliard.edu)

**ADMISSIONS** 212-799-5000 x223  
[musicadmissions@juilliard.edu](mailto:musicadmissions@juilliard.edu)

**Audition Requirements** [Audition Requirements](#)

## FINANCIAL INFORMATION

[Tuition & Fees](#) / [Financial Aid & Scholarships](#)

## CAREER / POST-GRADUATION ASSISTANCE

[The Alan D. Marks Center for Career Services and Entrepreneurship](#) at Juilliard provides a comprehensive integration of career services programs and entrepreneurial strategies into the ecosystem of the Juilliard community, preparing graduates across all disciplines to be confident professionals at the intersection of creativity, technology, and business.

# Juilliard

**KEY STATISTICS** (college level and above)

674 music students

**Music Faculty:** 132 full time, 173 adjunct

## AREAS OF STUDY

Brass • Collaborative Piano • Composition (Performance) • Conducting • Early Music • Jazz Studies & Contemporary Media • Organ • Piano • Strings • Vocal Arts/Opera • Winds & Percussion • Dance • Acting • Playwriting

## DEGREE PROGRAMS

[Undergraduate Programs](#) / [Graduate Programs](#)

## ADDITIONAL PROGRAMS

(non-matriculating/prep)

[Cross-registration programs for classes at Barnard College, Columbia University or The Juilliard School](#) / [Preparatory Division](#)

## PANDEMIC & SAFETY

✓=Yes ✗=No ○=Under consideration

[Policies & Procedures for this school](#)

### Is the school considering:

- ✓ *Shifting semester start and/or end dates?*
- ✓ *Changes to class and/or ensemble sizes?*
- ✓ *Shifting more coursework online?*
- ✓ *Requiring masks for students, faculty, staff?*
- ✓ *Reducing on-campus housing density, if provided?*

**Does the school plan to test all for COVID-19 at term start, then periodically?** ○

**Does the school plan changes to tuition and/or room & board fees?** ✗

## SOCIAL LINKS



## Transforming passion into artistry

Undergraduate and graduate degrees and diplomas

World-renowned faculty and guest artists

Performance opportunities in New York City and abroad

APPLY BY DECEMBER 1

[juilliard.edu](http://juilliard.edu)

Juilliard



## LAMONT SCHOOL OF MUSIC

University of Denver

### WHAT DISTINGUISHES THIS SCHOOL?

Lamont is a premier music performance school within an internationally known university surrounded by a vibrant arts city. We are big enough to have a symphony orchestra, jazz orchestra, opera, and many other multi-genre ensembles, but small enough that our students receive an abundance of individual attention and performing opportunities.

**LOCATION** 2344 East Iliff Avenue  
Denver, CO 80208  
[liberalarts.du.edu/lamont](http://liberalarts.du.edu/lamont)

**ADMISSIONS** 303-871-6973  
[musicadmission@du.edu](mailto:musicadmission@du.edu)

**Audition Requirements** [Audition Requirements](#)

### FINANCIAL INFORMATION

[Tuition & Fees](#) / [Financial Aid & Scholarships](#)

### CAREER / POST-GRADUATION ASSISTANCE

[Career Services](#) / [Resources for DU alumni, parents and friends](#)

**KEY STATISTICS** (college level and above)  
**300** music students

**Music Faculty:** **32** full time, **40** adjunct

## LAMONT SCHOOL OF MUSIC (cont'd)

University of Denver

### AREAS OF STUDY

Brass • Composition (Performance) • Conducting  
• Jazz Studies & Contemporary Media • Music Technology (including Production) • Musicology  
• Organ • Piano • Strings • Vocal Arts/Opera • Winds & Percussion • Music Theory • Piano Pedagogy • Suzuki Pedagogy (violin & cello)

### DEGREE PROGRAMS

[Undergraduate Programs](#) / [Graduate Programs](#)

### ONLINE COURSES

[Online courses information](#)

### PANDEMIC & SAFETY

✓=Yes ✗=No ○=Under consideration

[Policies & Procedures for this school](#)

### Is the school considering:

✗ *Shifting semester start and/or end dates?*

✓ *Changes to class and/or ensemble sizes?*

✓ *Shifting more coursework online?*

✓ *Requiring masks for students, faculty, staff?*

✓ *Reducing on-campus housing density, if provided?*

**Does the school plan to test all for COVID-19 at term start, then periodically?** ✓

**Does the school plan changes to tuition and/or room & board fees?** ✗

### SOCIAL LINKS



SAN FRANCISCO  
CONSERVATORY OF MUSIC

# Launching careers in a changing world.

### PROGRAMS OF STUDY

Bachelor of Music  
Master of Music  
Artist Certificate in Chamber Music  
Professional Studies Diploma  
Postgraduate Diploma in Vocal Performance



### DEGREE OPTIONS

**Bachelor of Music Degrees** in  
Music Education, Performance,  
Composition, Music Theory,  
Music History and Music Business  
**Bachelor of Arts Degree** in Music  
**Master of Music Degrees** in  
Music Education and Performance

[potsdam.edu/crane](http://potsdam.edu/crane)



# LONGY SCHOOL OF MUSIC

Bard College

## WHAT DISTINGUISHES THIS SCHOOL?

Longy's innovative Catalyst Curriculum compels graduate students to explore their artistry and to take risks to build their skills, guided by a world-class faculty that encourages them to push their artistic presentation beyond the proscenium model. Longy prepares musicians to make a difference in the world with a social imperative that is at the core of the School's curriculum. Breaking down traditional conservatory constraints, Longy students learn to lead meaningful lives in music through project-based courses and performances alongside professional partners.

**LOCATION** 27 Garden Street  
Cambridge, MA 02138  
UNITED STATES  
[longy.edu/](http://longy.edu/)

**ADMISSIONS** 617-876-0956  
[admissions@longy.edu](mailto:admissions@longy.edu)

**Audition Requirements** [Audition Requirements](#)

**FINANCIAL INFORMATION**  
[Tuition & Fees](#) / [Financial Aid & Scholarships](#)

**CAREER / POST-GRADUATION ASSISTANCE**  
From their first days at Longy, students become a Boston musician, performing professionally with faculty on concert stages around the city. Networking and performing opportunities abound. Students can receive Teaching Assistantships or Graduate Fellowships, which reduce tuition by up to \$10,000 per year. There are also numerous employment opportunities on campus.

# LONGY

School of Music of Bard College

**KEY STATISTICS** (college level and above)

260 music students

**Music Faculty:** 0 full time, 127 adjunct

251 scholarships awarded

## AREAS OF STUDY

Brass • Collaborative Piano • Composition (Performance) • Conducting • Early Music • Jazz Studies & Contemporary Media • Music Education • Organ • Piano • Strings • Vocal Arts/Opera • Winds & Percussion • Guitar • Chamber Music • Historical Performance • Dalcroze Eurhythmics • Certified Music Practitioner • Theory

## DEGREE PROGRAMS

[Undergraduate Programs](#) / [Graduate Programs](#)

## PANDEMIC & SAFETY

✓=Yes ✗=No ○=Under consideration

[Policies & Procedures for this school](#)

## Is the school considering:

✓ *Shifting semester start and/or end dates?*

✓ *Changes to class and/or ensemble sizes?*

✓ *Shifting more coursework online?*

✓ *Requiring masks for students, faculty, staff?*

n/a *Reducing on-campus housing density, if provided?*

**Does the school plan to test all for COVID-19 at term start, then periodically?** ○

**Does the school plan changes to tuition and/or room & board fees?** ✓

## SOCIAL LINKS



BECOME THE  
MUSICIAN THE  
WORLD NEEDS  
YOU TO BE

At Longy, we prepare students to become exceptional musicians who can engage new audiences; teach anyone, anywhere; and use artistry to change lives in communities around the world.

Apply now at  
**Longy.edu**

LONGY

School of Music of Bard College

BOSTON & LOS ANGELES





**1864**  
**UNIVERSITY of DENVER**

**LAMONT SCHOOL of MUSIC**

**SCHOLARSHIPS AVAILABLE!**  
APPLY BY  
JANUARY 15

<b>Areas of Study</b>	<b>Programs Offered</b>
Brass	Bachelor of Music
Conducting	Bachelor of Arts
Composition	Minor in Music
Guitar	Minor in Ethnomusicology
Harp	Master of Music
Jazz	Master of Arts
Keyboard	Artist Diploma
Music Theory	Certificates
Musicology	
Percussion	
Piano Pedagogy	
Recording & Production	
Strings	
Suzuki Pedagogy	
Voice	
Woodwinds	

**www.du.edu/lamont**

## LYNN UNIVERSITY CONSERVATORY OF MUSIC

### Lynn University

#### WHAT DISTINGUISHES THIS SCHOOL?

Lynn offers world-class faculty and full-tuition scholarships to all enrolled conservatory students. Room and board scholarships also available.

#### LOCATION

3601 North Military Trail  
Boca Raton, FL 33431  
UNITED STATES

[www.lynn.edu/academics/colleges/conservatory](http://www.lynn.edu/academics/colleges/conservatory)

**ADMISSIONS** 561-237-7804

[music@lynn.edu](mailto:music@lynn.edu)

**Audition Requirements** [Audition Requirements](#)

#### FINANCIAL INFORMATION

[Tuition & Fees](#)

#### CAREER / POST-GRADUATION ASSISTANCE

Lynn's comprehensive career preparation includes: one-on-one career counseling • résumé writing and coaching • tips on employment research • personality and skill assessments • informational and mock interviews • professional networking • entrepreneurial seminars.

#### KEY STATISTICS (college level and above)

**110** music students

**Music Faculty:** **12** full time, **13** adjunct

**110** scholarships awarded

#### AREAS OF STUDY

Brass • Collaborative Piano • Composition (Performance) • Organ • Piano • Strings • Winds & Percussion • Harp • Percussion

*Additional details:* Instrumental Collaborative Piano not available for Undergraduate Bachelor of Music; Undergraduate Bachelor of Music; Graduate Master of Music; Graduate Certificate Professional Performance

#### PANDEMIC & SAFETY

✓=Yes ✗=No ○=Under consideration

[Policies & Procedures for this school](#)

#### Is the school considering:

✗ *Shifting semester start and/or end dates?*

✓ *Changes to class and/or ensemble sizes?*

✓ *Shifting more coursework online?*

✓ *Requiring masks for students, faculty, staff?*

✓ *Reducing on-campus housing density, if provided?*

**Does the school plan to test all for COVID-19 at term start, then periodically?** ✗

**Does the school plan changes to tuition and/or room & board fees?** ✗

#### SOCIAL LINKS





# MANHATTAN SCHOOL OF MUSIC

## WHAT DISTINGUISHES THIS SCHOOL?

Manhattan School of Music takes full advantage of New York's abundant learning and performance opportunities, preparing highly talented students for careers as passionate performers and composers and to be imaginative, effective leaders in the arts.

**LOCATION** 130 Claremont Avenue  
New York, NY 10027  
UNITED STATES  
[www.msmnyc.edu](http://www.msmnyc.edu)

**ADMISSIONS** 917-493-4436  
[admission@msmnyc.edu](mailto:admission@msmnyc.edu)

## Audition Requirements [Audition Requirements](#)

All applicants who have completed their online application and passed prescreening (if applicable) must audition in order to be admitted to MSM.

## FINANCIAL INFORMATION

[Tuition & Fees](#) / [Financial Aid & Scholarships](#)

## CAREER / POST-GRADUATION ASSISTANCE

MSM's [Center for Music Entrepreneurship \(CME\)](#) provides professional career coaching in a supportive environment, including individual sessions. Flexible internship opportunities are made available for elective credits with leading NYC-area cultural institutions.

# M Manhattan School of Music

## KEY STATISTICS (college level and above)

**965** music students

**Music Faculty:** **93** full time, **242** adjunct

## AREAS OF STUDY

Brass • Collaborative Piano • Composition (Performance) • Conducting • Jazz Studies & Contemporary Media • Organ • Piano • Strings • Vocal Arts/Opera • Winds & Percussion • Jazz Arts

## DEGREE PROGRAMS

[Bachelor of Music](#) / [Graduate Programs](#)

*Additional details:* Musical Theatre (BM only);  
Orchestral Performance (MM, PS only); Classical  
Contemporary Performance (MM, PS only)

## ADDITIONAL PROGRAMS

(non-matriculating/prep)

[Unique learning opportunities beyond the general academic curriculum](#)

## PANDEMIC & SAFETY

✓=Yes ✗=No ○=Under consideration

[Policies & Procedures for this school](#)

## Is the school considering:

- ✓ *Shifting semester start and/or end dates?*
- ✓ *Changes to class and/or ensemble sizes?*
- ✓ *Shifting more coursework online?*
- ✓ *Requiring masks for students, faculty, staff?*
- ✓ *Reducing on-campus housing density, if provided?*

**Does the school plan to test all for COVID-19 at term start, then periodically?** ✓

**Does the school plan changes to tuition and/or room & board fees?** ✗

## SOCIAL LINKS



**M** Manhattan  
School of Music

**MSMNYC.EDU**  
Office of Admissions and Financial Aid  
Manhattan School of Music  
130 Claremont Avenue, New York, NY 10027  
917-493-4436 [admission@msmnyc.edu](mailto:admission@msmnyc.edu)

*it all happens here.*

## MANNES SCHOOL OF MUSIC

### The New School

#### WHAT DISTINGUISHES THIS SCHOOL?

The curriculum at Mannes breathes new life into traditional conservatory education, offering students rigorous training together with unique opportunities to grow as artists through cross-disciplinary collaboration, entrepreneurial innovation, and social engagement.

**LOCATION** 55 West 13th Street  
New York, NY 10011  
UNITED STATES  
[www.newschool.edu/mannes/](http://www.newschool.edu/mannes/)

**ADMISSIONS** 212-580-0210 x4862  
[performingarts@newschool.edu](mailto:performingarts@newschool.edu)

**Audition Requirements** [Audition Requirements](#)

#### FINANCIAL INFORMATION

[Tuition & Fees](#) / [Financial Aid & Scholarships](#)

#### CAREER / POST-GRADUATION ASSISTANCE

At Mannes, students receive exceptional preparation for careers in music by engaging in a highly progressive curriculum. They can participate in partnerships with top-tier arts organizations in the Northeast. The New School's Career Services office is also available to them.

**KEY STATISTICS** (college level and above)

**460** music students

**Music Faculty:** **12** full time, **238** adjunct

#### AREAS OF STUDY

Arts Leadership • Brass • Collaborative Piano  
• Composition (Performance) • Conducting • Jazz  
Studies & Contemporary Media • Music Technology  
(including Production) • Organ • Piano • Strings  
• Vocal Arts/Opera • Winds & Percussion

#### DEGREE PROGRAMS

[Undergraduate Programs](#) / [Graduate Programs](#)

*Additional details:* MA Arts Management and Entrepreneurship, Master of Music Performer-Composer

#### PANDEMIC & SAFETY

✓=Yes ✗=No ○=Under consideration

[Policies & Procedures for this school](#)

**Is the school considering:**

✗ *Shifting semester start and/or end dates?*

✓ *Changes to class and/or ensemble sizes?*

✓ *Shifting more coursework online?*

○ *Requiring masks for students, faculty, staff?*

✓ *Reducing on-campus housing density, if provided?*

**Does the school plan to test all for COVID-19 at term start, then periodically?** ○

**Does the school plan changes to tuition and/or room & board fees?** ○

#### SOCIAL LINKS



## MASON GROSS SCHOOL OF THE ARTS

### Rutgers University

For current information, please [see this school's website](#).

## ROBERT MCDUFFIE CENTER FOR STRINGS

### Mercer University

#### WHAT DISTINGUISHES THIS SCHOOL?

Founded as a special institute within Mercer University's Townsend School of Music, the McDuffie Center for Strings is limited to 26 students: 12 violinists, six violists, six cellists and two bassists. All accepted students receive a full-tuition scholarship to study with an unparalleled faculty of international performing artists.

**LOCATION** 1501 Mercer University Drive  
Macon, GA 31207  
UNITED STATES  
[mcduffie.mercer.edu/](http://mcduffie.mercer.edu/)

**ADMISSIONS** 478-301-2886  
[mcduffiecenter@merc.edu](mailto:mcduffiecenter@merc.edu)

**Audition Requirements** [Audition Requirements](#)

Two contrasting movements of solo Bach; a concerto movement; an etude/caprice of your choice.

#### FINANCIAL INFORMATION

[Tuition & Fees](#)

#### CAREER / POST-GRADUATION ASSISTANCE

[Career assistance](#)

**KEY STATISTICS** (college level and above)

**26** music students

**Music Faculty:** **13** full time, **0** adjunct

**27** scholarships awarded

#### AREAS OF STUDY

Strings • Strings only: violin, viola, cello and bass

#### DEGREE PROGRAMS

[Undergraduate Programs](#)

*Additional details:* Bachelor of Music and Artist Diploma

#### PANDEMIC & SAFETY

✓=Yes ✗=No ○=Under consideration

**Is the school considering:**

✗ *Shifting semester start and/or end dates?*

○ *Changes to class and/or ensemble sizes?*

○ *Shifting more coursework online?*

✓ *Requiring masks for students, faculty, staff?*

✓ *Reducing on-campus housing density, if provided?*

**Does the school plan to test all for COVID-19 at term start, then periodically?** ✓

**Does the school plan changes to tuition and/or room & board fees?** ○

#### SOCIAL LINKS



## NEW ENGLAND CONSERVATORY

### WHAT DISTINGUISHES THIS SCHOOL?

NEC is a premier conservatory that values exploration and collaboration. Students are mentored by a devoted faculty of esteemed artist-teachers and scholars. Alumni fill orchestra chairs, concert halls, jazz clubs, recording studios, and arts management positions worldwide.

**LOCATION** 290 Huntington Avenue  
Boston, MA 02115  
UNITED STATES  
[necmusic.edu/](http://necmusic.edu/)

**ADMISSIONS** 617-585-1101  
[admission@necmusic.edu](mailto:admission@necmusic.edu)

**Audition Requirements** [Audition Requirements](#)

### FINANCIAL INFORMATION

[Tuition & Fees](#) / [Financial Aid & Scholarships](#)

### CAREER / POST-GRADUATION ASSISTANCE

NEC has reinvented how we equip young musicians to thrive amidst the challenges they find after graduation. Our mission has not changed—we educate and nurture exceptionally gifted musicians to perform at the highest levels of accomplishment. But today, performance excellence is the starting point. Musicians must be more than virtuosos; they must be their own businesses.

### KEY STATISTICS (college level and above)

**750** music students

**Music Faculty:** **113** full time, **313** adjunct

### AREAS OF STUDY

Brass • Collaborative Piano • Composition (Performance) • Conducting • Early Music • Jazz Studies & Contemporary Media • Musicology • Organ • Piano • Strings • Vocal Arts/Opera • Winds & Percussion • Collaborative Piano • Contemporary Improvisation • Piano Trio Program • String Quartet Program

### DEGREE PROGRAMS

[Undergraduate Programs](#) / [Graduate Programs](#)

### PANDEMIC & SAFETY

✓=Yes ✗=No ○=Under consideration

[Policies & Procedures for this school](#)

#### Is the school considering:

- *Shifting semester start and/or end dates?*
- *Changes to class and/or ensemble sizes?*
- *Shifting more coursework online?*
- ✓ *Requiring masks for students, faculty, staff?*
- ✓ *Reducing on-campus housing density, if provided?*

**Does the school plan to test all for COVID-19 at term start, then periodically?** ○

**Does the school plan changes to tuition and/or room & board fees?** ✗

### SOCIAL LINKS



## NEW WORLD SYMPHONY, AMERICA'S ORCHESTRAL ACADEMY

### WHAT DISTINGUISHES THIS SCHOOL?

A laboratory for the way music is taught, presented, and experienced, the New World Symphony consists of 87 musicians who are granted fellowships lasting up to three years. The fellowship offers in-depth exposure to traditional & modern repertoire, professional development training, and personalized experiences working with leading guest faculty.

**LOCATION** New World Center  
500 17th Street  
Miami Beach, FL 33139  
UNITED STATES  
[www.nws.edu/](http://www.nws.edu/)

**ADMISSIONS** 305-428-6713  
[admissions@nws.edu](mailto:admissions@nws.edu)

**Audition Requirements** [Audition Requirements](#)

### FINANCIAL INFORMATION

[Tuition & Fees](#) / [Financial Aid & Scholarships](#)

### CAREER / POST-GRADUATION ASSISTANCE

An intensive four-day audition preparation seminar, involving visiting coaches from major orchestras, is held each year. In addition, Fellows organize monthly mock auditions with the occasional participation of guest conductors and coaches. NWS also presents an annual series of workshops with psychologist Dr. Noa Kageyama.

### KEY STATISTICS (college level and above)

**87** music students

**Music Faculty:** **5** full time, **100** adjunct

**87** scholarships awarded

### AREAS OF STUDY

Arts Leadership • Brass • Composition (Performance) • Conducting • Jazz Studies & Contemporary Media • Music Business • Musicology • Organ • Strings

*Additional details:* NWS annually offers also a fellowship in library and audio engineering and is a non-degree-granting member of the National Association of Schools of Music.

### ONLINE COURSES

[Online courses information](#)

### PANDEMIC & SAFETY

✓=Yes ✗=No ○=Under consideration

#### Is the school considering:

- ✗ *Shifting semester start and/or end dates?*
- *Changes to class and/or ensemble sizes?*
- ✓ *Shifting more coursework online?*
- *Requiring masks for students, faculty, staff?*
- ✓ *Reducing on-campus housing density, if provided?*

**Does the school plan to test all for COVID-19 at term start, then periodically?** ○

**Does the school plan changes to tuition and/or room & board fees?** ✗

### SOCIAL LINKS





## NORTHEASTERN UNIVERSITY DEPARTMENT OF MUSIC

### WHAT DISTINGUISHES THIS SCHOOL?

The Department of Music at Northeastern is devoted to offering graduate and undergraduate majors, and combined majors and minors, a cross-disciplinary approach to research and practice in music, underscored by real-world experiential learning and cutting-edge technology.

**LOCATION** 351 Ryder Hall  
Northeastern University  
Boston, MA 02115  
[camd.northeastern.edu/music](http://camd.northeastern.edu/music)

**ADMISSIONS** 617-373-2200  
[admissions@northeastern.edu](mailto:admissions@northeastern.edu)

**FINANCIAL INFORMATION**  
[Tuition & Fees](#) / [Financial Aid & Scholarships](#)

**CAREER / POST-GRADUATION ASSISTANCE**  
[Career assistance](#)

**KEY STATISTICS** (college level and above)  
**335** music students  
**Music Faculty:** **19** full time, **10** adjunct

**AREAS OF STUDY**  
Arts Leadership • Music Business • Music Technology  
(including Production)

### DEGREE PROGRAMS

[Undergraduate Programs](#) / [Graduate Programs](#)

*Additional details:* Music with Concentration in Music Industry, BS; Music with Concentration in Music Technology, BS; Music, BA; Computer Science and Music with Concentration in Music Technology, BS; Electrical Engineering and Music with Concentration in Music Technology, BS; Game Design and Music with Concentration in Music Technology, BS; Music and Communication Studies with Concentration in Music Industry, BS; Music and Psychology, BS; Physics and Music with Concentration in Music Technology, BS; Arts Administration and Cultural Entrepreneurship, MS; Creative Practice Leadership, MS; Music Industry Leadership, MS; Arts Administration, Graduate Certificate; Cultural Entrepreneurship, Graduate Certificate

### PANDEMIC & SAFETY

✓=Yes ✗=No ○=Under consideration

[Policies & Procedures for this school](#)

#### Is the school considering:

- *Shifting semester start and/or end dates?*
- ✓ *Changes to class and/or ensemble sizes?*
- ✓ *Shifting more coursework online?*
- ✓ *Requiring masks for students, faculty, staff?*
- ✓ *Reducing on-campus housing density, if provided?*

**Does the school plan to test all for COVID-19 at term start, then periodically?** ○

**Does the school plan changes to tuition and/or room & board fees?** ○

**SOCIAL LINKS**    

## OBERLIN CONSERVATORY OF MUSIC

Oberlin College

### WHAT DISTINGUISHES THIS SCHOOL?

Oberlin Conservatory focuses on undergraduate pre-professional musicians in classical, contemporary, and jazz performance; composition; and electronic music. Two graduate programs—Piano Technology and Recording Arts & Production—lead to Artist Diplomas. The conservatory is embedded within the premier liberal arts environment of Oberlin College and is renowned for the Double Degree Program.

**LOCATION** 77 West College Street  
Oberlin, OH 44074  
UNITED STATES  
[www.oberlin.edu/conservatory](http://www.oberlin.edu/conservatory)

**ADMISSIONS** 440-775-8413  
[Conservatory.Admissions@oberlin.edu](mailto:Conservatory.Admissions@oberlin.edu)

**Audition Requirements** [Audition Requirements](#)  
Audition requirements vary according to discipline

**FINANCIAL INFORMATION**  
[Tuition & Fees](#) / [Financial Aid & Scholarships](#)

**CAREER / POST-GRADUATION ASSISTANCE**  
Oberlin College's [Career Center](#) and Oberlin Conservatory's [Professional Development Office](#) help students and recent alumni in the College of Arts and Sciences and the Conservatory of Music.

**KEY STATISTICS** (college level and above)  
**580** music students  
**Music Faculty:** **80** full time, **25** adjunct  
**550** scholarships awarded

### AREAS OF STUDY

Brass • Collaborative Piano • Composition (Performance) • Conducting • Early Music • Jazz Studies & Contemporary Media • Music Technology (including Production) • Musicology • Organ • Piano • Strings • Vocal Arts/Opera • Winds & Percussion • Vocal Accompanying • Piano Technology

### DEGREE PROGRAMS

[Undergraduate Programs](#) / [Graduate Programs](#)

*Additional details:* MM in Performance on Historical Instruments; MM in Conducting

**ADDITIONAL PROGRAMS**  
(non-matriculating/prep)  
[Center for Innovation & Impact](#) / [Summer Programs](#)

### PANDEMIC & SAFETY

✓=Yes ✗=No ○=Under consideration

[Policies & Procedures for this school](#)

#### Is the school considering:

- ✓ *Shifting semester start and/or end dates?*
- ✓ *Changes to class and/or ensemble sizes?*
- ✓ *Shifting more coursework online?*
- ✓ *Requiring masks for students, faculty, staff?*
- ✓ *Reducing on-campus housing density, if provided?*

**Does the school plan to test all for COVID-19 at term start, then periodically?** ✓

**Does the school plan changes to tuition and/or room & board fees?** ✗

**SOCIAL LINKS**      

## OHIO STATE UNIVERSITY SCHOOL OF MUSIC

For current information, please [see this school's website](#).

### OPERA STEAMBOAT

#### WHAT DISTINGUISHES THIS SCHOOL?

The Opera Artist Institute is open to selected singers dedicated to performing at their highest level and one or more rising directors, conductors, and pianist-coaches. The Institute provides aspiring professionals with performance experience and professional training but is open to excellent musicians of any age.

**LOCATION** PO Box 775576  
Steamboat Springs, CO 80477  
UNITED STATES  
[operasteamboat.org/](http://operasteamboat.org/)

**ADMISSIONS** 970-879-1996  
[oai@operasteamboat.org](mailto:oai@operasteamboat.org)

**Audition Requirements** [Audition Requirements](#)  
Three to five arias of contrasting styles

**FINANCIAL INFORMATION**  
[Tuition & Fees](#) / [Financial Aid & Scholarships](#)

**CAREER / POST-GRADUATION ASSISTANCE**  
We provide recommendation letters to any Opera Artist Institute graduates who have successfully completed the program.

#### KEY STATISTICS (college level and above)

**35** music students  
**Music Faculty:** **5** full time, **5** adjunct  
**10** scholarships awarded

#### AREAS OF STUDY

Vocal Arts/Opera

#### ONLINE COURSES

[Online courses information](#)

#### PANDEMIC & SAFETY

✓=Yes ✗=No ○=Under consideration

#### Is the school considering:

- ✗ *Shifting semester start and/or end dates?*
- *Changes to class and/or ensemble sizes?*
- *Shifting more coursework online?*
- *Requiring masks for students, faculty, staff?*
- ✓ *Reducing on-campus housing density, if provided?*

**Does the school plan to test all for COVID-19 at term start, then periodically?** ○

**Does the school plan changes to tuition and/or room & board fees?** ○

#### SOCIAL LINKS



## PARK UNIVERSITY INTERNATIONAL CENTER FOR MUSIC

#### WHAT DISTINGUISHES THIS SCHOOL?

World-renowned faculty and students; Van Cliburn Gold Medalist Stanislav Ioudenitch is on faculty; Cliburn Silver Medalist Kenny Broberg is a current graduate student; London International Piano Competition Gold Medalist Behzod Abduraimov is artist-in-residence.

**LOCATION** 8700 NW River Park Drive  
Parkville, MO 64152  
UNITED STATES  
[www.park.edu/](http://www.park.edu/)

**ADMISSIONS** 816-746-2533  
[admissions@park.edu](mailto:admissions@park.edu)

**Audition Requirements** [Audition Requirements](#)

**FINANCIAL INFORMATION**  
[Tuition & Fees](#) / [Financial Aid & Scholarships](#)

**CAREER / POST-GRADUATION ASSISTANCE**  
[Career assistance](#)

**KEY STATISTICS** (college level and above)  
**25** music students  
**Music Faculty:** **6** full time, **0** adjunct

#### AREAS OF STUDY

Piano • Strings

#### DEGREE PROGRAMS

[Undergraduate Programs](#) / [Graduate Programs](#)  
*Additional details:* Bachelor of Music in Performance (Piano, Violin, Viola Cello, Orchestral Woodwinds and Brass)

Master of Music in Performance (Two-Year Program, Applied Emphasis in Piano, Violin, Viola or Cello)  
Graduate Certificate in Music Performance (Two-Year Program)  
Graduate Artist Diploma in Music Performance (Two-Year Program—Applied Emphasis in Piano, Violin, Viola or Cello)

#### ONLINE COURSES

[Online courses information](#)

#### PANDEMIC & SAFETY

✓=Yes ✗=No ○=Under consideration

#### [Policies & Procedures for this school](#)

#### Is the school considering:

- ✗ *Shifting semester start and/or end dates?*
- ✗ *Changes to class and/or ensemble sizes?*
- *Shifting more coursework online?*
- ✓ *Requiring masks for students, faculty, staff?*
- ✓ *Reducing on-campus housing density, if provided?*

**Does the school plan to test all for COVID-19 at term start, then periodically?** ○

**Does the school plan changes to tuition and/or room & board fees?** ✗

#### SOCIAL LINKS



# PEABODY CONSERVATORY

Johns Hopkins University

## WHAT DISTINGUISHES THIS SCHOOL?

The Peabody Institute was founded in 1857 as the first major intellectual and arts center in an American city by philanthropist George Peabody. Focused on the five pillars of excellence, interdisciplinary experiences, innovation, community connectivity, and diversity, Peabody is introducing the [Breakthrough Curriculum in Music Leadership](#) to prepare artists for a world that is constantly changing.

**LOCATION** 1 East Mount Vernon Place  
Baltimore, MD 21202  
UNITED STATES  
[peabody.jhu.edu/](http://peabody.jhu.edu/)

**ADMISSIONS** 667-208-6600  
[admissions@peabody.jhu.edu](mailto:admissions@peabody.jhu.edu)

**Audition Requirements** [Audition Requirements](#)

## FINANCIAL INFORMATION

[Tuition & Fees](#) / [Financial Aid & Scholarships](#)

## CAREER / POST-GRADUATION ASSISTANCE

[LAUNCHPad](#), Peabody's comprehensive career services office, helps students and recent alumni forge successful careers. We provide wide-ranging services in support of students and alumni's goals.

## KEY STATISTICS (college level and above)

**675** music students

**Music Faculty:** **75** full time, **100** adjunct

**500** scholarships awarded



## AREAS OF STUDY

Brass • Collaborative Piano • Composition (Performance) • Conducting • Early Music • Jazz Studies & Contemporary Media • Music Business • Music Education • Music Technology (including Production) • Musicology • Organ • Piano • Strings • Vocal Arts/Opera • Winds & Percussion • Acoustics • Chamber Music • Computer Music • Dance • Guitar • Music for New Media • Pedagogy • Recording Arts and Sciences • Vocal Accompanying

## DEGREE PROGRAMS

[Undergraduate Programs](#) / [Graduate Programs](#)

## ADDITIONAL PROGRAMS

(non-matriculating/prep)  
[Beyond Technique Dance Intensive](#) / [Music for New Media](#)

## ONLINE COURSES

[Online courses information](#)

## PANDEMIC & SAFETY

✓=Yes ✗=No ○=Under consideration

[Policies & Procedures for this school](#)

## Is the school considering:

✗ *Shifting semester start and/or end dates?*

○ *Changes to class and/or ensemble sizes?*

✓ *Shifting more coursework online?*

✓ *Requiring masks for students, faculty, staff?*

✓ *Reducing on-campus housing density, if provided?*

**Does the school plan to test all for COVID-19 at term start, then periodically?** ○

**Does the school plan changes to tuition and/or room & board fees?** ✗

## SOCIAL LINKS



LARRY GANNER



MADELINE GRAY

[peabody.jhu.edu](http://peabody.jhu.edu)  
667-208-6600

Explore the PEABODY CONSERVATORY,  
a community of artists cultivating excellence,  
embracing new ideas, and committed to the  
future of music in our world.





## PECK SCHOOL OF THE ARTS

### University of Wisconsin—Milwaukee

#### WHAT DISTINGUISHES THIS SCHOOL?

Music at UW-Milwaukee offers comprehensive undergraduate and graduate education, and is the largest professional degree-granting music department in the UW System. Our renowned artist faculty and alumni perform with the Milwaukee Symphony Orchestra, the Lyric Opera of Chicago, the Florentine Opera, Present Music, and more.

**LOCATION** UWM Department of Music  
PO Box 413  
Milwaukee, WI 53201  
UNITED STATES  
[uwm.edu/arts/](http://uwm.edu/arts/)

**ADMISSIONS** 414-229-4763  
[uwmpsoa@uwm.edu](mailto:uwmpsoa@uwm.edu)

**FINANCIAL INFORMATION**  
[Tuition & Fees](#)

**CAREER / POST-GRADUATION ASSISTANCE**  
UW-Milwaukee offers a comprehensive Career Planning and Resource Center.

**KEY STATISTICS** (college level and above)  
**300** music students  
**Music Faculty:** **28** full time, **29** adjunct

#### AREAS OF STUDY

Brass • Collaborative Piano • Composition (Performance) • Conducting • Music Education • Music Technology (including Production) • Musicology • Piano • Strings • Vocal Arts/Opera • Winds & Percussion

#### DEGREE PROGRAMS

[Undergraduate Programs](#) / [Graduate Programs](#)

*Additional details:* Master of Music/Master of Library and Information Sciences (integrated degree)

#### ONLINE COURSES

[Online courses information](#)

#### PANDEMIC & SAFETY

✓=Yes ✗=No ○=Under consideration

[Policies & Procedures for this school](#)

#### Is the school considering:

- ✗ *Shifting semester start and/or end dates?*
- ✓ *Changes to class and/or ensemble sizes?*
- ✓ *Shifting more coursework online?*
- ✓ *Requiring masks for students, faculty, staff?*
- ✓ *Reducing on-campus housing density, if provided?*

**Does the school plan to test all for COVID-19 at term start, then periodically?** ○

**Does the school plan changes to tuition and/or room & board fees?** ○

#### SOCIAL LINKS



## PEPPERDINE UNIVERSITY

#### WHAT DISTINGUISHES THIS SCHOOL?

Pepperdine University has emerged as one of the nation's leading private universities. Located in beautiful Malibu, CA, the Music Department offers high-quality instruction and an exceptional, personal learning experience for each individual.

#### LOCATION

24255 Pacific Coast Highway  
Malibu, CA 90263  
UNITED STATES  
[seaver.pepperdine.edu/fine-arts/undergraduate/music/](http://seaver.pepperdine.edu/fine-arts/undergraduate/music/)

**ADMISSIONS** 310-506-4111  
[fineartsrecruit@pepperdine.edu](mailto:fineartsrecruit@pepperdine.edu)

**Audition Requirements** [Audition Requirements](#)

**FINANCIAL INFORMATION**  
[Tuition & Fees](#) / [Financial Aid & Scholarships](#)

**CAREER / POST-GRADUATION ASSISTANCE**  
[Career assistance](#)

#### KEY STATISTICS (college level and above)

**80** music students  
**Music Faculty:** **8** full time, **30** adjunct

#### AREAS OF STUDY

Brass • Composition (Performance) • Music Education • Piano • Strings • Vocal Arts/Opera • Winds & Percussion

#### ADDITIONAL PROGRAMS

(non-matriculating/prep)  
[Up Against the Screen and the Pickford Ensemble / Opera Program](#) / [Heidelberg Music Program](#)

#### PANDEMIC & SAFETY

✓=Yes ✗=No ○=Under consideration

[Policies & Procedures for this school](#)

#### Is the school considering:

- ✓ *Shifting semester start and/or end dates?*
- ✓ *Changes to class and/or ensemble sizes?*
- ✓ *Shifting more coursework online?*
- ✓ *Requiring masks for students, faculty, staff?*
- ✓ *Reducing on-campus housing density, if provided?*

**Does the school plan to test all for COVID-19 at term start, then periodically?** ✗

**Does the school plan changes to tuition and/or room & board fees?** ○

#### SOCIAL LINKS



## PURCHASE COLLEGE CONSERVATORY OF MUSIC

State University of New York

### WHAT DISTINGUISHES THIS SCHOOL?

The Purchase College Conservatory of Music offers a multidisciplinary approach to conservatory training; individualized attention and mentoring from world-class musicians; scholarships and financial aid; double majors and minors, including arts management; and a location just 40 minutes from New York City.

**LOCATION** 735 Anderson Hill Road  
Purchase, NY 10577  
UNITED STATES  
[www.purchase.edu/music/](http://www.purchase.edu/music/)

**ADMISSIONS** 914-251-6700  
[music@purchase.edu](mailto:music@purchase.edu)

**Audition Requirements** [Audition Requirements](#)  
You must have an application for admission on file in order to be offered a live audition.

**FINANCIAL INFORMATION**  
[Tuition & Fees](#) / [Financial Aid & Scholarships](#)

**CAREER / POST-GRADUATION ASSISTANCE**  
Our [Career Development Center](#) offers support in choosing the right major, marketing yourself, interviewing, and job and graduate-school prep. Services are also available for alumni.

**KEY STATISTICS** (college level and above)  
**380** music students  
**Music Faculty:** **25** full time, **50** adjunct  
**100** scholarships awarded

### AREAS OF STUDY

Arts Leadership • Brass • Collaborative Piano  
• Composition (Performance) • Jazz Studies & Contemporary Media • Music Technology (including Production) • Musicology • Piano • Strings • Vocal Arts/Opera • Winds & Percussion • Guitar • Studio Composition

**DEGREE PROGRAMS**  
[Undergraduate Programs](#) / [Graduate Programs](#)

**PANDEMIC & SAFETY**  
✓=Yes ✗=No ○=Under consideration  
[Policies & Procedures for this school](#)

**Is the school considering:**  
✗ *Shifting semester start and/or end dates?*  
✓ *Changes to class and/or ensemble sizes?*  
✓ *Shifting more coursework online?*  
✓ *Requiring masks for students, faculty, staff?*  
✓ *Reducing on-campus housing density, if provided?*  
**Does the school plan to test all for COVID-19 at term start, then periodically?** ✗  
**Does the school plan changes to tuition and/or room & board fees?** ○

**SOCIAL LINKS**   

## ROYAL COLLEGE OF MUSIC

### WHAT DISTINGUISHES THIS SCHOOL?

The Royal College of Music is one of the world's greatest conservatories. Ranked the top institution for performing arts in the U.K. for five consecutive years (QS World University Rankings 2016-20), we have nurtured exceptional musical talent for more than 135 years and welcome students from all over the globe.

**LOCATION** Prince Consort Road  
London SW7 2BS  
UNITED KINGDOM  
[www.rcm.ac.uk/](http://www.rcm.ac.uk/)

**ADMISSIONS** +44 (0)20 7591 4300  
[admissions@rcm.ac.uk](mailto:admissions@rcm.ac.uk)

**Audition Requirements** [Audition Requirements](#)  
Audition requirements are set by each faculty.

**FINANCIAL INFORMATION**  
[Tuition & Fees](#) / [Financial Aid & Scholarships](#)

**CAREER / POST-GRADUATION ASSISTANCE**  
The RCM is a world leader in career development for musicians. Our dedicated [Creative Careers Centre](#) will guide you through a range of opportunities that mirror the professional world. You can use these services from day one of your course to develop an outstanding CV and wealth of experience that will help shape your future career, and the Creative Careers Centre provides advice and services to RCM alumni for five years after graduation.

**KEY STATISTICS** (college level and above)  
**800** music students  
**Music Faculty:** **44** full time, **276** adjunct

### AREAS OF STUDY

Brass • Collaborative Piano • Composition (Performance) • Conducting • Early Music  
• Music Education • Music Technology (including Production) • Musicology • Organ • Piano • Strings  
• Vocal Arts/Opera • Winds & Percussion

**DEGREE PROGRAMS**  
[Undergraduate Programs](#) / [Graduate Programs](#)

**PANDEMIC & SAFETY**  
✓=Yes ✗=No ○=Under consideration  
**Is the school considering:**  
✗ *Shifting semester start and/or end dates?*  
○ *Changes to class and/or ensemble sizes?*  
✓ *Shifting more coursework online?*  
○ *Requiring masks for students, faculty, staff?*  
✗ *Reducing on-campus housing density, if provided?*  
**Does the school plan to test all for COVID-19 at term start, then periodically?** ✗  
**Does the school plan changes to tuition and/or room & board fees?** ✗

**SOCIAL LINKS**    



## SAN FRANCISCO CONSERVATORY OF MUSIC

### WHAT DISTINGUISHES THIS SCHOOL?

With a faculty that includes nearly 30 members of the San Francisco Symphony, as well as collaborative partnerships with the Bay Area's major performing arts institutions, tech, and entertainment companies, SFCM provides its students with an unparalleled opportunity to study in the heart of San Francisco's performing arts district.

**LOCATION** 50 Oak Street  
San Francisco, CA 94102  
UNITED STATES  
[sfcml.edu/](http://sfcml.edu/)

**ADMISSIONS** 800-899-SFCM  
[apply@sfcml.edu](mailto:apply@sfcml.edu)

**Audition Requirements** [Audition Requirements](#)

### FINANCIAL INFORMATION

[Tuition & Fees](#) / [Financial Aid & Scholarships](#)

### CAREER / POST-GRADUATION ASSISTANCE

The [Professional Development and Engagement Center](#) (PDEC) offers students gig opportunities, internships, a grant service, access to employment listings, and courses on marketing, finance, teaching, and technology.

**KEY STATISTICS** (college level and above)  
**422** music students  
**Music Faculty:** 28 full time, 65 adjunct

### AREAS OF STUDY

Brass • Collaborative Piano • Composition (Performance) • Conducting • Early Music • Jazz Studies & Contemporary Media • Music Technology (including Production) • Organ • Piano • Strings • Vocal Arts/Opera • Winds & Percussion • Chamber Music • Classical Guitar

### DEGREE PROGRAMS

[Undergraduate Programs](#) / [Graduate Programs](#)

### ADDITIONAL PROGRAMS

(non-matriculating/prep)  
[Rubin Institute for Music Criticism](#) / [Center for Innovative Leadership](#) / [Pre-College Division](#)

### ONLINE COURSES

[Online courses information](#)

### PANDEMIC & SAFETY

✓=Yes ✗=No ○=Under consideration

[Policies & Procedures for this school](#)

### Is the school considering:

- *Shifting semester start and/or end dates?*
- ✓ *Changes to class and/or ensemble sizes?*
- ✓ *Shifting more coursework online?*
- ✓ *Requiring masks for students, faculty, staff?*
- ✗ *Reducing on-campus housing density, if provided?*

**Does the school plan to test all for COVID-19 at term start, then periodically?** ✓

**Does the school plan changes to tuition and/or room & board fees?** ✗

### SOCIAL LINKS



## SHANGHAI ORCHESTRA ACADEMY (SOA)

### Shanghai Conservatory of Music

### WHAT DISTINGUISHES THIS SCHOOL?

The Shanghai Orchestra Academy (SOA) is the result of a partnership among the Shanghai Symphony Orchestra (SSO), New York Philharmonic, and Shanghai Conservatory of Music. The SOA provides rigorous training at the Master's degree level for talented instrumentalists.

### LOCATION

1380 Middle Fuxing Road  
Shanghai  
CHINA  
[soa.shsymphony.com/en/index.aspx](http://soa.shsymphony.com/en/index.aspx)

### ADMISSIONS

+ 86 21-54667821  
[admissions@orchestraacademy.com](mailto:admissions@orchestraacademy.com)

**Audition Requirements** [Audition Requirements](#)

### FINANCIAL INFORMATION

[Tuition & Fees](#) / [Financial Aid & Scholarships](#)

### CAREER / POST-GRADUATION ASSISTANCE

Students gain first-hand experience learning from and playing with NY Philharmonic musicians as well as performing with the SSO. Other international partners who have offered training opportunities to SOA students include the NDR Elbphilharmonie Orchestra, Sydney Symphony Orchestra, Singapore Symphony Orchestra, Hong Kong Philharmonic Orchestra, Taiwan Philharmonic, China Philharmonic Orchestra, Guangzhou Symphony Orchestra, and Hangzhou Philharmonic.

### KEY STATISTICS (college level and above)

**40** music students  
**Music Faculty:** 22 full time, 40 adjunct

### AREAS OF STUDY

Brass • Strings • Winds & Percussion

### DEGREE PROGRAMS

[Graduate Programs](#)

### PANDEMIC & SAFETY

✓=Yes ✗=No ○=Under consideration

### Is the school considering:

- ✓ *Shifting semester start and/or end dates?*
- *Changes to class and/or ensemble sizes?*
- ✓ *Shifting more coursework online?*
- ✓ *Requiring masks for students, faculty, staff?*
- n/a *Reducing on-campus housing density, if provided?*

**Does the school plan to test all for COVID-19 at term start, then periodically?** ✗

**Does the school plan changes to tuition and/or room & board fees?** ○

### SOCIAL LINKS



## SHENANDOAH CONSERVATORY

### Shenandoah University

#### WHAT DISTINGUISHES THIS SCHOOL?

Shenandoah Conservatory offers rigorous professional training in music, theater, and dance, with extensive performance opportunities, collaborative and interdisciplinary experiences, and close mentoring relationships with faculty and guest artists.

**LOCATION** 1460 University Drive  
Winchester, VA 22601  
UNITED STATES  
[www.su.edu/conservatory/](http://www.su.edu/conservatory/)

**ADMISSIONS** 540-665-4581  
[admit@su.edu](mailto:admit@su.edu)

**Audition Requirements** [Audition Requirements](#)

#### FINANCIAL INFORMATION

[Tuition & Fees](#) / [Financial Aid & Scholarships](#)

#### CAREER / POST-GRADUATION ASSISTANCE

Shenandoah University's Career Services works with students in all aspects of the career development process. For additional information, visit the [Career Services website](#).

**KEY STATISTICS** (college level and above)

**501** music students

**Music Faculty:** **41** full time, **36** adjunct

#### AREAS OF STUDY

Arts Leadership • Brass • Collaborative Piano  
• Composition (Performance) • Conducting • Jazz  
Studies & Contemporary Media • Music Business  
• Music Education • Music Technology (including

Production) • Piano • Strings • Vocal Arts/Opera  
• Winds & Percussion • Music Therapy • Vocal  
Pedagogy-Classical • Vocal Pedagogy-Contemporary  
Commercial Music • Dance • Acting • Musical Theater  
• Musical Theater Accompanying • Theater Design  
& Production • Performing Arts Leadership &  
Management

#### DEGREE PROGRAMS

[Undergraduate Programs](#) / [Graduate Programs](#)

#### ADDITIONAL PROGRAMS

(non-matriculating/prep)  
[Ensembles](#) / [ShenCoLAB: Festival of Arts, Ideas and  
Exploration](#) / [Global Citizenship Project](#)

#### ONLINE COURSES

[Online courses information](#)

#### PANDEMIC & SAFETY

✓=Yes ✗=No ○=Under consideration

[Policies & Procedures for this school](#)

**Is the school considering:**

✗ *Shifting semester start and/or end dates?*

✓ *Changes to class and/or ensemble sizes?*

○ *Shifting more coursework online?*

✓ *Requiring masks for students, faculty, staff?*

✓ *Reducing on-campus housing density, if provided?*

**Does the school plan to test all for COVID-19 at  
term start, then periodically?** ○

**Does the school plan changes to tuition and/or  
room & board fees?** ○

#### SOCIAL LINKS



## THE SHEPHERD SCHOOL OF MUSIC

### Rice University

#### WHAT DISTINGUISHES THIS SCHOOL?

The Shepherd School of Music provides a dedicated faculty of artist-teachers, extraordinary performance opportunities, beautiful facilities, and an unparalleled education at one of America's premiere universities.

**LOCATION** 6100 Main Street, entrance 18  
Houston, TX 77005  
UNITED STATES  
[music.rice.edu/](http://music.rice.edu/)

**ADMISSIONS** 713-348-4854  
[musi@rice.edu](mailto:musi@rice.edu)

**Audition Requirements**  
[Undergraduate](#) / [Graduate](#)

#### FINANCIAL INFORMATION

[Tuition & Fees](#) / [Financial Aid & Scholarships](#)

#### CAREER / POST-GRADUATION ASSISTANCE

To ensure that our students are fully prepared to meet the demands of the profession, we have created an instructional area entitled Music Career and Skills Enhancement. Specific courses are designed to complement the Shepherd School's superb musical and academic training to help students transition to professional life. Additionally, Rice University's Center for Career Development supports alumni through career counseling and access to career resources.

**KEY STATISTICS** (college level and above)

**277** music students

**Music Faculty:** **46** full time, **0** adjunct

#### AREAS OF STUDY

Brass • Collaborative Piano • Composition  
(Performance) • Conducting • Musicology • Organ  
• Piano • Strings • Vocal Arts/Opera • Winds  
& Percussion

#### DEGREE PROGRAMS

[Undergraduate Programs](#) / [Graduate Programs](#)

#### PANDEMIC & SAFETY

✓=Yes ✗=No ○=Under consideration

[Policies & Procedures for this school](#)

**Is the school considering:**

✓ *Shifting semester start and/or end dates?*

✓ *Changes to class and/or ensemble sizes?*

✓ *Shifting more coursework online?*

✓ *Requiring masks for students, faculty, staff?*

✓ *Reducing on-campus housing density, if provided?*

**Does the school plan to test all for COVID-19 at  
term start, then periodically?** ✓

**Does the school plan changes to tuition and/or  
room & board fees?** ✗

#### SOCIAL LINKS





# THE TIANJIN JUILLIARD SCHOOL

## The Juilliard School

### WHAT DISTINGUISHES THIS SCHOOL?

The Tianjin Juilliard School uniquely focuses on collaborative musicianship, emphasizing a commitment to ensemble playing of the highest artistic level. Our programs reflect the best of educational standards, preparing students for a lifetime of creative expression, of engagement and growth as an individual and as a musician.

**LOCATION** Binhai New Area, Tianjin  
CHINA  
[tianjinjuilliard.edu.cn/](http://tianjinjuilliard.edu.cn/)

**ADMISSIONS** 212-299-5000 x7642  
[admissions@tianjinjuilliard.edu.cn](mailto:admissions@tianjinjuilliard.edu.cn)

**Audition Requirements** [Audition Requirements](#)

### FINANCIAL INFORMATION

[Tuition & Fees](#) / [Financial Aid & Scholarships](#)

# TianjinJuilliard 天津茱莉亚学院

**KEY STATISTICS** (college level and above)  
**40** music students  
**Music Faculty:** **24** full time, **0** adjunct

### AREAS OF STUDY

Brass • Collaborative Piano • Strings • Winds  
& Percussion

### DEGREE PROGRAMS

[Graduate Programs](#)

*Additional details:* M.M. Degree in Orchestral  
Studies, Chamber Music, and Collaborative Piano

### ADDITIONAL PROGRAMS

(non-matriculating/prep)  
[Pre-College Program](#)

### PANDEMIC & SAFETY

✓=Yes ✗=No ○=Under consideration

#### Is the school considering:

- ✓ *Shifting semester start and/or end dates?*
- *Changes to class and/or ensemble sizes?*
- ✓ *Shifting more coursework online?*
- *Requiring masks for students, faculty, staff?*
- ✗ *Reducing on-campus housing density, if provided?*

**Does the school plan to test all for COVID-19 at  
term start, then periodically?** ✗

**Does the school plan changes to tuition and/or  
room & board fees?** ✗

### SOCIAL LINKS



## Study at Juilliard's New Branch Campus in China

**Master of Music in Chamber Music,  
Orchestral Studies, and Collaborative Piano**

World-renowned faculty and guest artists  
Full-tuition Fellowship Program  
Additional scholarship opportunities available

**Apply by December 15**  
[tianjinjuilliard.edu.cn](http://tianjinjuilliard.edu.cn)

Juilliard students  
performing at  
ChamberFest 2020

Contact Admissions



# Northeastern University

**Music at Northeastern University:**  
for students destined to become change agents  
and thought leaders in industry, culture, and society



## Undergraduate Programs:

- B.A. in Music
- B.S. in Music Industry
- B.S. in Music Technology
- Combined majors in Music and Computer Information Science, Physics, Engineering, Game Design, Mathematics, Psychology, Communication Studies, Media and Screen Studies

## Co-op and Dialogues of Civilization:

The Co-op program sets Northeastern apart from other institutions and leverages NU's excellence in experiential learning. Co-ops and Dialogues of Civilization provide direct, real-world engagement with industry, creative culture and practice across the globe, partnering with over 100 companies and organizations—recording labels, music publishing companies, media outlets, cultural centers and performing arts organizations. For more information visit:

<https://www.northeastern.edu/admissions/application-information/apply>

**Daniel Strong Godfrey**  
Professor and Chair  
Department of Music  
College of Arts, Media and Design  
351 Ryder Hall  
Northeastern University  
Boston, MA 02115  
[d.godfrey@northeastern.edu](mailto:d.godfrey@northeastern.edu)



# UCLA HERB ALPERT SCHOOL OF MUSIC

University of California, Los Angeles

## WHAT DISTINGUISHES THIS SCHOOL?

The UCLA Herb Alpert School of Music is at the nexus of performance, scholarship, and innovation, balancing cutting-edge scholarship with performance mastery and composition.

## LOCATION

445 Charles E Young Drive East  
2520 Schoenberg Music Building  
Los Angeles, CA 90095  
UNITED STATES  
[www.schoolofmusic.ucla.edu/](http://www.schoolofmusic.ucla.edu/)

## ADMISSIONS

310-825-6457  
[admissions@schoolofmusic.ucla.edu](mailto:admissions@schoolofmusic.ucla.edu)

## Audition Requirements

[Undergraduate audition requirements](#) / [Graduate audition requirements](#)

## FINANCIAL INFORMATION

[Tuition & Fees](#) / [Financial Aid & Scholarships](#)

## CAREER / POST-GRADUATION ASSISTANCE

[The UCLA Career Center](#) is one of the largest and most comprehensive career centers in the nation. In collaboration with the School of Music, it offers a wide range of services that help students explore their professional interests and facilitate connections with employers, alumni, and graduate school representatives.

## KEY STATISTICS (college level and above)

**553** music students

**Music Faculty:** **47** full time, **24** adjunct  
**278** scholarships awarded

## AREAS OF STUDY

Brass • Collaborative Piano • Composition (Performance) • Conducting • Early Music • Jazz Studies & Contemporary Media • Music Business • Music Education • Music Technology (including Production) • Musicology • Organ • Piano • Strings • Vocal Arts/Opera • Ethnomusicology

## DEGREE PROGRAMS

[Undergraduate Programs](#) / [Graduate Programs](#)

## ONLINE COURSES

[Online courses information](#)

## PANDEMIC & SAFETY

✓=Yes ✗=No ○=Under consideration

[Policies & Procedures for this school](#)

## Is the school considering:

✗ *Shifting semester start and/or end dates?*

○ *Changes to class and/or ensemble sizes?*

✓ *Shifting more coursework online?*

✓ *Requiring masks for students, faculty, staff?*

✓ *Reducing on-campus housing density, if provided?*

**Does the school plan to test all for COVID-19 at term start, then periodically?** ✗

**Does the school plan changes to tuition and/or room & board fees?** ✗

## SOCIAL LINKS



# UNIVERSITY OF CALIFORNIA, BERKELEY

For current information, please [see this school's website](#).



# UNIVERSITY OF CINCINNATI COLLEGE— CONSERVATORY OF MUSIC (CCM)

## WHAT DISTINGUISHES THIS SCHOOL?

Declared one of this country's leading conservatories by *The New York Times*, CCM offers nine degree types (BA, BM, BFA, MFA, MM, MA, AD, DMA, PhD) in more than 100 possible majors.

**LOCATION** PO Box 210003  
290 CCM Boulevard  
Cincinnati, OH 45221-0003  
UNITED STATES  
[ccm.uc.edu](http://ccm.uc.edu)

**ADMISSIONS** 513-556-9479  
[ccmadmis@uc.edu](mailto:ccmadmis@uc.edu)

**Audition Requirements** [Audition Requirements](#)

## FINANCIAL INFORMATION

[Tuition & Fees](#) / [Financial Aid & Scholarships](#)

## CAREER / POST-GRADUATION ASSISTANCE

Professional development and entrepreneurial acumen are an important part of the CCM experience. Faculty mentorship along with the Managing Professional Performance Careers course provide a foundation for transitioning to life after graduation. Select programs also host Senior Showcases in industry hotspots like New York, Chicago, and LA. CCM is also home to the [Bravos Without Barriers Diversity Fellowship](#) Program.



## KEY STATISTICS (college level and above)

966 music students

**Music Faculty:** 88 full time, 57 adjunct

140 scholarships awarded

## AREAS OF STUDY

Arts Leadership • Brass • Collaborative Piano  
• Composition (Performance) • Conducting • Early Music • Jazz Studies & Contemporary Media • Music Business • Music Education • Music Technology (including Production) • Musicology • Organ • Piano • Strings • Vocal Arts/Opera • Winds & Percussion • Acting • Arts Administration • Ballet • Commercial Music Production • Media Production • Music History • Musical Theatre • Theatre Design and Production

## DEGREE PROGRAMS

[Undergraduate Programs](#) / [Graduate Programs](#)

## ADDITIONAL PROGRAMS

(non-matriculating/prep)

[Summer Programs](#)

## ONLINE COURSES

[Online courses information](#)

## PANDEMIC & SAFETY

✓=Yes ✗=No ○=Under consideration

[Policies & Procedures for this school](#)

## Is the school considering:

✓ *Shifting semester start and/or end dates?*

✓ *Changes to class and/or ensemble sizes?*

✓ *Shifting more coursework online?*

✓ *Requiring masks for students, faculty, staff?*

✓ *Reducing on-campus housing density, if provided?*

**Does the school plan to test all for COVID-19 at term start, then periodically?** ○

**Does the school plan changes to tuition and/or room & board fees?** ○

## SOCIAL LINKS



CCM students Jordan Curry and Magdiell Antequera perform with the Cincinnati Symphony Orchestra. The CSO/CCM Diversity Fellowship and Opera Fusion: New Works are made possible by generous support from The Andrew W. Mellon Foundation.

# WELCOME TO YOUR NEXT STAGE.

Tomorrow's arts leaders and luminaries get their start at UC's nationally ranked and internationally renowned College-Conservatory of Music.

Whether it's paid performance opportunities with the Cincinnati Symphony Orchestra as part of the **CSO/CCM Diversity Fellowship Program** or a chance to work with some of the world's leading composers and librettists through the **Opera Fusion: New Works Program** with Cincinnati Opera, CCM provides life-changing experiences for tomorrow's performing and media arts professionals.

Internationally acclaimed faculty, classrooms without boundaries and unlimited opportunity. Your future is calling. Take your next step at [ccm.uc.edu](http://ccm.uc.edu).

University of  
CINCINNATI | CCM

## UNIVERSITY OF COLORADO BOULDER

### WHAT DISTINGUISHES THIS SCHOOL?

Founded in 1920, the college offers a wide range of programs uniquely combining advanced musical training with professionally oriented experiences and the rich resources of a leading research university. Active as award-winning professional performers, composers, and scholars, faculty members are committed to helping students develop their talents.

**LOCATION** 301 UCB  
Boulder, CO 80309  
UNITED STATES  
[www.colorado.edu/music/](http://www.colorado.edu/music/)

**ADMISSIONS** 303-492-6301  
[apply@colorado.edu](mailto:apply@colorado.edu)

**Audition Requirements** [Audition Requirements](#)

**FINANCIAL INFORMATION**  
[Tuition & Fees](#) / [Financial Aid & Scholarships](#)

**CAREER / POST-GRADUATION ASSISTANCE**  
[Career assistance](#)

**KEY STATISTICS** (college level and above)  
**550** music students  
**Music Faculty:** **60** full time, **30** adjunct

### AREAS OF STUDY

Arts Leadership • Brass • Collaborative Piano  
• Composition (Performance) • Conducting • Early Music • Jazz Studies & Contemporary Media • Music Business • Music Education • Music Technology (including Production) • Musicology • Organ • Piano • Strings • Vocal Arts/Opera • Winds & Percussion • Musical Theatre

**DEGREE PROGRAMS**  
[Undergraduate Programs](#) / [Graduate Programs](#)

**ADDITIONAL PROGRAMS**  
(non-matriculating/prep)  
[Entrepreneurship Center for Music](#)

**PANDEMIC & SAFETY**  
✓=Yes ✗=No ○=Under consideration  
[Policies & Procedures for this school](#)  
**Is the school considering:**  
✗ *Shifting semester start and/or end dates?*  
○ *Changes to class and/or ensemble sizes?*  
✓ *Shifting more coursework online?*  
✓ *Requiring masks for students, faculty, staff?*  
✓ *Reducing on-campus housing density, if provided?*  
**Does the school plan to test all for COVID-19 at term start, then periodically?** ○  
**Does the school plan changes to tuition and/or room & board fees?** ○

**SOCIAL LINKS**    

## UNIVERSITY OF FLORIDA

### WHAT DISTINGUISHES THIS SCHOOL?

The student body of the UF School of Music is an exceptional group of regional, national, and international artists and scholars. UF's extraordinary academic reputation, highly accomplished faculty, rigor of professional training, and notable success of our alumni attracts many of the best and brightest students each year.

**LOCATION**  
Gainesville, FL 32611  
UNITED STATES  
<https://arts.ufl.edu/academics/music>

**ADMISSIONS** 352-273-0224  
[musiceducation@arts.ufl.edu](mailto:musiceducation@arts.ufl.edu)

**Audition Requirements** [Audition Requirements](#)

**FINANCIAL INFORMATION**  
[Tuition & Fees](#)

**CAREER / POST-GRADUATION ASSISTANCE**  
The University of Florida Career Connections Center offers a variety of services, including one-on-one career advice, résumé help and templates for building a career action plan. Students gain access to our GaterLink platform, where they can schedule meetings with a career planner, look at upcoming workshops and other events, and connect with resources to push their careers to the next level.

**KEY STATISTICS** (college level and above)  
**461** music students  
**Music Faculty:** **42** full time, **10** adjunct

### AREAS OF STUDY

Brass • Composition (Performance) • Conducting • Jazz Studies & Contemporary Media (Jazz Studies Only) • Musicology • Organ • Piano • Strings (Strings Only) • Vocal Arts/Opera • Winds & Percussion

**DEGREE PROGRAMS**  
[Undergraduate Programs](#) / [Graduate Programs](#)

**ONLINE COURSES**  
[Online courses information](#)

**PANDEMIC & SAFETY**  
✓=Yes ✗=No ○=Under consideration  
**Is the school considering:**  
✓ *Shifting semester start and/or end dates?*  
✓ *Changes to class and/or ensemble sizes?*  
✓ *Shifting more coursework online?*  
✓ *Requiring masks for students, faculty, staff?*  
✓ *Reducing on-campus housing density, if provided?*  
**Does the school plan to test all for COVID-19 at term start, then periodically?** ✓  
**Does the school plan changes to tuition and/or room & board fees?** ○

**SOCIAL LINKS** 



## UNIVERSITY OF ILLINOIS SCHOOL OF MUSIC

University of Illinois at Urbana-Champaign

### WHAT DISTINGUISHES THIS SCHOOL?

Beautiful facilities including the Krannert Center for the Performing Arts; inclusive community with supportive faculty; individual attention for students; diverse Big 10 campus with wide-ranging performance and research opportunities.

**LOCATION** 1114 West Nevada Street  
Urbana, IL 61801  
UNITED STATES  
[music.illinois.edu/](http://music.illinois.edu/)

**ADMISSIONS** 217-244-7899  
[musicadmissions@illinois.edu](mailto:musicadmissions@illinois.edu)

**Audition Requirements** [Audition Requirements](#)

### FINANCIAL INFORMATION

[Tuition & Fees](#) / [Financial Aid & Scholarships](#)

### CAREER / POST-GRADUATION ASSISTANCE

The [Career Services Office](#) offers workshops, job fairs, hands-on sessions, and individual appointments for professional feedback. School of Music entrepreneurship events help students develop important business and marketing skills.

### KEY STATISTICS (college level and above)

**725** music students  
**Music Faculty:** **90** full time, **0** adjunct

### AREAS OF STUDY

Brass • Collaborative Piano • Composition (Performance) • Conducting • Jazz Studies & Contemporary Media • Music Business • Music Education • Music Technology (including

Production) • Musicology • Organ • Piano • Strings • Vocal Arts/Opera • Winds & Percussion • Choral Conducting • Computer Science + Music • Instrumental Performance • Jazz Performance • Lyric Theatre • Music Technology • Open Studies • Piano Pedagogy • Vocal Coaching and Accompanying • Vocal Performance • Wind Band Conducting

### DEGREE PROGRAMS

[Undergraduate Programs](#) / [Graduate Programs](#)

### ADDITIONAL PROGRAMS

(non-matriculating/prep)  
[Illinois Summer Music Online](#)

### ONLINE COURSES

[Online courses information](#)

### PANDEMIC & SAFETY

✓=Yes ✗=No ○=Under consideration

[Policies & Procedures for this school](#)

#### Is the school considering:

✗ *Shifting semester start and/or end dates?*

✓ *Changes to class and/or ensemble sizes?*

✓ *Shifting more coursework online?*

✓ *Requiring masks for students, faculty, staff?*

✓ *Reducing on-campus housing density, if provided?*

**Does the school plan to test all for COVID-19 at term start, then periodically?** ✓

**Does the school plan changes to tuition and/or room & board fees?** ✓

### SOCIAL LINKS



## UNIVERSITY OF MASSACHUSETTS AMHERST DEPARTMENT OF MUSIC & DANCE

### WHAT DISTINGUISHES THIS SCHOOL?

UMass Amherst offers conservatory quality education in a university setting. Intensive yet supportive, the music program has a variety of concentrations as well as nationally and internationally renowned faculty.

**LOCATION** 273 Fine Arts Center East,  
University of Massachusetts  
Amherst, MA 01003  
UNITED STATES  
[www.umass.edu/music/](http://www.umass.edu/music/)

**ADMISSIONS** 413-545-6048  
[musicadmissions@umass.edu](mailto:musicadmissions@umass.edu)

### Audition Requirements

[Undergraduate Audition requirements by instrument](#) /  
[Graduate Audition requirements by instrument](#)

Prospective undergraduates must submit the Common App before signing up for an audition. Early Action is recommended. To sign up for an audition, students must submit an online Audition Request Form, which can be found [on the department website](#).

### FINANCIAL INFORMATION

[Tuition & Fees](#) / [Financial Aid & Scholarships](#)

### CAREER / POST-GRADUATION ASSISTANCE

[Career Services](#)

Humanities & Fine Arts Career Planning Rep:  
[Caroline Gould](#), 413-545-6257

### KEY STATISTICS (college level and above)

**292** music students  
**Music Faculty:** **43** full time, **3** adjunct

### AREAS OF STUDY

Brass • Collaborative Piano • Composition (Performance) • Conducting • Jazz Studies & Contemporary Media • Music Education • Piano • Strings • Vocal Arts/Opera • Winds & Percussion • Music Theory • Music History

### DEGREE PROGRAMS

[Undergraduate Programs](#) / [Graduate Programs](#)

### ONLINE COURSES

[Online courses information](#)

### PANDEMIC & SAFETY

✓=Yes ✗=No ○=Under consideration

#### Is the school considering:

✓ *Shifting semester start and/or end dates?*

○ *Changes to class and/or ensemble sizes?*

○ *Shifting more coursework online?*

○ *Requiring masks for students, faculty, staff?*

✓ *Reducing on-campus housing density, if provided?*

**Does the school plan to test all for COVID-19 at term start, then periodically?** ○

**Does the school plan changes to tuition and/or room & board fees?** ○

### SOCIAL LINKS



## UNIVERSITY OF MASSACHUSETTS LOWELL DEPARTMENT OF MUSIC

### WHAT DISTINGUISHES THIS SCHOOL?

We offer Bachelor of Music majors in Sound Recording Technology, Music Business, Music Education, and Music Performance. We are now offering a new major: Composition for New Media.

**LOCATION** Durgin Hall  
35 Wilder Street  
Lowell, MA 01854  
UNITED STATES  
[www.uml.edu/FAHSS/Music/](http://www.uml.edu/FAHSS/Music/)

**ADMISSIONS** 978-934-3931  
[admissions@uml.edu](mailto:admissions@uml.edu)

**Audition Requirements** [Audition Requirements](#)

**FINANCIAL INFORMATION**  
[Tuition & Fees](#) / [Financial Aid & Scholarships](#)

**CAREER / POST-GRADUATION ASSISTANCE**  
Internships in Music Business and Sound Recording Technology help provide job experience and placement.

### KEY STATISTICS (college level and above)

**400** music students  
**Music Faculty:** **16** full time, **45** adjunct

### AREAS OF STUDY

Composition (Performance) • Music Business  
• Music Education • Music Technology (including Production) • Composition for New Media  
• Music Performance

### DEGREE PROGRAMS

[Undergraduate Programs](#) / [Graduate Programs](#)

### PANDEMIC & SAFETY

✓=Yes ✗=No ○=Under consideration

#### Is the school considering:

- ✗ *Shifting semester start and/or end dates?*
- ✓ *Changes to class and/or ensemble sizes?*
- ✓ *Shifting more coursework online?*
- ✓ *Requiring masks for students, faculty, staff?*
- ✓ *Reducing on-campus housing density, if provided?*

**Does the school plan to test all for COVID-19 at term start, then periodically?** ○

**Does the school plan changes to tuition and/or room & board fees?** ○

**SOCIAL LINKS** 

## UNIVERSITY OF MICHIGAN SCHOOL OF MUSIC, THEATRE & DANCE

### WHAT DISTINGUISHES THIS SCHOOL?

The School's unique relationship as a part of the U-M, ranked as one the top universities in the U.S., provides students with a vast array of options and opportunities.

**LOCATION** 1100 Baits Drive, 2290 Moore  
Ann Arbor, MI 48109  
UNITED STATES  
[smt.d.umich.edu/](http://smt.d.umich.edu/)

**ADMISSIONS** 734-764-0593  
[smt.d.admissions@umich.edu](mailto:smt.d.admissions@umich.edu)

**Audition Requirements** [Audition Requirements](#)

**FINANCIAL INFORMATION**  
[Tuition & Fees](#) / [Financial Aid & Scholarships](#)

**CAREER / POST-GRADUATION ASSISTANCE**  
The School of Music, Theatre & Dance EXCEL Program catalyzes success for U-M SMTD students and alumni through courses, co-curricular workshops, ongoing mentoring, and \$100,000 in student project and venture funding.

### KEY STATISTICS (college level and above)

**1100** music students  
**Music Faculty:** **148** full time, **75** adjunct

### AREAS OF STUDY

Arts Leadership • Brass • Collaborative Piano  
• Composition (Performance) • Conducting • Early Music • Jazz Studies & Contemporary Media • Music Business • Music Education • Music Technology (including Production) • Musicology • Organ • Piano • Strings • Vocal Arts/Opera • Winds & Percussion • Performing Arts Technology • Dance • Musical Theatre • Theatre

### DEGREE PROGRAMS

[Undergraduate Programs](#) / [Graduate Programs](#)

### ADDITIONAL PROGRAMS

(non-matriculating/prep)  
[Engagement & Outreach](#)

### PANDEMIC & SAFETY

✓=Yes ✗=No ○=Under consideration

[Policies & Procedures for this school](#)

#### Is the school considering:

- *Shifting semester start and/or end dates?*
- *Changes to class and/or ensemble sizes?*
- *Shifting more coursework online?*
- *Requiring masks for students, faculty, staff?*
- ✓ *Reducing on-campus housing density, if provided?*

**Does the school plan to test all for COVID-19 at term start, then periodically?** ○

**Does the school plan changes to tuition and/or room & board fees?** ✗

**SOCIAL LINKS**    



# UNIVERSITY OF NORTH CAROLINA SCHOOL OF THE ARTS

## WHAT DISTINGUISHES THIS SCHOOL?

UNCSA School of Music offers a transformative conservatory experience that prepares students for professional careers. The program combines intensive individual study under professional artist-mentors with a variety of performance opportunities including collaborations with other UNCSA arts schools.

**LOCATION** 1533 South Main Street  
Winston-Salem, NC 27127  
UNITED STATES  
[www.uncsa.edu/](http://www.uncsa.edu/)

**ADMISSIONS** 336-770-3290  
[admissions@uncsa.edu](mailto:admissions@uncsa.edu)

**Audition Requirements**  
[Undergraduate](#) / [Graduate](#) / [High School](#)

**FINANCIAL INFORMATION**  
[Tuition & Fees](#) / [Financial Aid & Scholarships](#)

**CAREER / POST-GRADUATION ASSISTANCE**  
UNCSA [Office of Career Development](#) works hand-in-hand with the arts schools in career preparation training. UNCSA students participate in career development seminars as part of their curriculum.



**KEY STATISTICS** (college level and above)  
**169** music students  
**Music Faculty:** **27** full time, **18** adjunct

**AREAS OF STUDY**  
Brass • Collaborative Piano • Composition (Performance) • Conducting • Music Technology (including Production) • Musicology • Organ • Piano • Strings • Vocal Arts/Opera • Winds & Percussion

**DEGREE PROGRAMS**  
[Undergraduate Programs](#) / [Graduate Programs](#)

**ADDITIONAL PROGRAMS**  
(non-matriculating/prep)  
[A.J. Fletcher Opera Institute](#)

**ONLINE COURSES**  
[Online courses information](#)

**PANDEMIC & SAFETY**  
✓=Yes ✗=No ○=Under consideration  
[Policies & Procedures for this school](#)  
**Is the school considering:**  
✓ *Shifting semester start and/or end dates?*  
✓ *Changes to class and/or ensemble sizes?*  
✓ *Shifting more coursework online?*  
✓ *Requiring masks for students, faculty, staff?*  
✓ *Reducing on-campus housing density, if provided?*  
**Does the school plan to test all for COVID-19 at term start, then periodically?** ✗  
**Does the school plan changes to tuition and/or room & board fees?** ✗

**SOCIAL LINKS**    

UNIVERSITY OF NORTH CAROLINA  
SCHOOL OF THE ARTS



IT'S ABSOLUTELY  
THRILLING TO  
PERFORM IN AN  
ENVIRONMENT  
WHERE EVERYONE  
IS COMMITTED TO  
EXCELLENCE AND  
EXCITED ABOUT  
INNOVATION IN MUSIC.

—Jane Koelsh, '20

Dance  
Design & Production  
Drama  
Filmmaking  
**Music**  
**Powering Creativity**

[UNCSA.EDU/MUSIC](http://UNCSA.EDU/MUSIC)

# Oberlin Conservatory Celebrating Tradition. Creating the Future.

At Oberlin, students are guided along diverse routes by expert faculty mentors. They are inspired through individualized instruction in studios and classes that launch compelling performances. And they are supported by campus resources that make imaginative projects possible.

This transformative education has launched cutting-edge music-makers including Musical America award winners Robert Spano, Jennifer Koh, Christopher Rouse, Jeremy Denk, and founders/members of ICE, Eighth Blackbird, Pacifica Quartet, and Boston Modern Orchestra Project.

**OBERLIN**  
COLLEGE & CONSERVATORY

conservatory.admissions@oberlin.edu  
440-775-8413  
[oberlin.edu/con](https://oberlin.edu/con)

## UNIVERSITY OF NORTH TEXAS

For current information, please [see this school's website](#).



**OPERA**  
STEAMBOAT

*Mozart & Rossini*

SUMMER FESTIVAL 2021

**BARBER OF SEVILLE** | **MARRIAGE OF FIGARO**  
**MAGIC FLUTE** | **CLEMENZA DI TITO**

### APPLY

Program Dates:  
July 19 - August 15, 2021  
Apply at [YAPtracker.com](https://YAPtracker.com)  
For more info visit  
[operasteamboat.org/institute](https://operasteamboat.org/institute)

### CONTACT

Andres Cladera,  
General and Artistic Director  
[andres@operasteamboat.org](mailto:andres@operasteamboat.org)

### AUDITIONS

**December 5th** - Northeastern Illinois University (Chicago)  
**December 9th** - Lamont School of Music (Denver)  
**December 12th and 13th** - OPERA America (NYC)

### COVID-19 AUDITION PLAN

Upload video recordings to YouTube. Send video links, resumes, and headshot to Andres Cladera.



# USC THORNTON SCHOOL OF MUSIC

University of Southern California

As the music profession changes, the USC Thornton School of Music offers an innovative education that prepares students for careers at the highest level as performers, composers, educators, and industry leaders. We do this while making the most of our location in Los Angeles, the nation's center for creativity and original art of all kinds.

**LOCATION** 3450 Watt Way, TMC 200  
Los Angeles, CA 90089-0851  
UNITED STATES  
[music.usc.edu/](https://music.usc.edu/)

**ADMISSIONS** 213-740-8986  
[uscmusic@usc.edu](mailto:uscmusic@usc.edu)

**Audition Requirements** [Audition Requirements](#)

**FINANCIAL INFORMATION**  
[Tuition & Fees](#) / [Financial Aid & Scholarships](#)

**CAREER / POST-GRADUATION ASSISTANCE**  
Various career-related courses are available for enrollment and one-on-one mentorship with faculty is a central aspect of the USC Thornton experience. The USC Career Center offers career services to current students and recent alumni.

## USC Thornton

School of Music

**KEY STATISTICS** (college level and above)

**1000** music students

**Music Faculty:** **90** full time, **90** adjunct

### AREAS OF STUDY

Arts Leadership • Brass • Collaborative Piano  
• Composition (Performance) • Early Music • Jazz  
Studies & Contemporary Media • Music Business  
• Music Technology (including Production)  
• Musicology • Organ • Piano • Strings • Vocal  
Arts/Opera • Winds & Percussion • Choral & Sacred  
Music • Classical Guitar • Community Music • Music  
Industry • Music Production • Music Teaching  
& Learning • Popular Music Performance  
• Screen Scoring

### DEGREE PROGRAMS

[Undergraduate Programs](#) / [Graduate Programs](#)

### PANDEMIC & SAFETY

✓=Yes ✗=No ○=Under consideration

[Policies & Procedures for this school](#)

#### Is the school considering:

- ✓ *Shifting semester start and/or end dates?*
- ✗ *Changes to class and/or ensemble sizes?*
- ✓ *Shifting more coursework online?*
- ✓ *Requiring masks for students, faculty, staff?*
- ✓ *Reducing on-campus housing density, if provided?*

**Does the school plan to test all for COVID-19 at term start, then periodically?** ✓

**Does the school plan changes to tuition and/or room & board fees?** ✗

### SOCIAL LINKS



**UNIVERSITY  
of SOUTHERN  
CALIFORNIA  
THORNTON  
SCHOOL of  
MUSIC**

**MUSIC IN THE CITY OF ANGELS**

The USC Thornton School of Music is located in the heart of Los Angeles, one of the world's most vibrant music centers.

USC Thornton | [MUSIC.USC.EDU](https://MUSIC.USC.EDU) | [f](#) [i](#) [t](#) [v](#) @USCTHORNTON

## THE UNIVERSITY OF TAMPA

### WHAT DISTINGUISHES THIS SCHOOL?

UT is a medium-sized, private institution located in downtown Tampa, FL. Our student body consists of 9,000 undergraduate students from all 50 states and 132 countries. We offer over 200 areas of study, all of which focus on experiential education through hands-on learning, internships, study abroad & research opportunities.

**LOCATION** 401 West Kennedy Boulevard  
Tampa, FL 33616  
UNITED STATES  
[www.ut.edu/](http://www.ut.edu/)

**ADMISSIONS** 813-257-3489  
[admissions@ut.edu](mailto:admissions@ut.edu)

**Audition Requirements** [Audition Requirements](#)

**FINANCIAL INFORMATION**  
[Tuition & Fees](#) / [Financial Aid & Scholarships](#)

**CAREER / POST-GRADUATION ASSISTANCE**  
[Career assistance](#)

### KEY STATISTICS (college level and above)

**150** music students

**Music Faculty:** 8 full time, 40 adjunct

### AREAS OF STUDY

Brass • Composition (Performance) • Music Education • Music Technology (including Production) • Organ • Piano • Strings • Vocal Arts/Opera • Winds & Percussion

### DEGREE PROGRAMS

[Undergraduate Programs](#) / [Graduate Programs](#)

*Additional details:* The vocal/instrumental options above are offered as tracks/concentrations for the B.A. in Music.

### PANDEMIC & SAFETY

✓=Yes ✗=No ○=Under consideration

[Policies & Procedures for this school](#)

#### Is the school considering:

✓ *Shifting semester start and/or end dates?*

✓ *Changes to class and/or ensemble sizes?*

○ *Shifting more coursework online?*

✓ *Requiring masks for students, faculty, staff?*

✗ *Reducing on-campus housing density, if provided?*

**Does the school plan to test all for COVID-19 at term start, then periodically?** ✗

**Does the school plan changes to tuition and/or room & board fees?** ✗

### SOCIAL LINKS



## WEITZENHOFFER FAMILY COLLEGE OF FINE ARTS

University of Oklahoma

### WHAT DISTINGUISHES THIS SCHOOL?

The most comprehensive college of fine arts in the state. Teems with innovation and excellence with support from its supplemental graduate certificate in Arts Management and Entrepreneurship and national Arts Incubation Lab. Its recent alumni work at all levels of the market, and have won Academy, Tony, Emmy, and Grammy Awards.

**LOCATION** 540 Parrington Oval, Suite 122  
Norman, OK 73069  
UNITED STATES  
[www.ou.edu/finearts](http://www.ou.edu/finearts)

**ADMISSIONS** 405-325-7374  
[afung@ou.edu](mailto:afung@ou.edu)

**FINANCIAL INFORMATION**  
[Tuition & Fees](#)

### CAREER / POST-GRADUATION ASSISTANCE

College of Fine Arts partners with the Price College of Business in providing a comprehensive structure of courses designed to develop the skills needed for careers in the arts. This includes preparation for the spectrum of careers and opportunities in this dynamic 21st century marketplace.

**KEY STATISTICS** (School of Music only; college level and above)

**450** music students

**Music Faculty:** 49 full time, 23 adjunct

### AREAS OF STUDY

Arts Leadership • Brass • Collaborative Piano • Composition (Performance) • Jazz Studies & Contemporary Media • Music Business • Music Education • Music Technology (including Production) • Musicology • Organ • Piano • Strings

### DEGREE PROGRAMS

[Undergraduate Programs](#) / [Graduate Programs](#)

### ONLINE COURSES

[Online courses information](#)

### PANDEMIC & SAFETY

✓=Yes ✗=No ○=Under consideration

#### Is the school considering:

✗ *Shifting semester start and/or end dates?*

✓ *Changes to class and/or ensemble sizes?*

○ *Shifting more coursework online?*

○ *Requiring masks for students, faculty, staff?*

✓ *Reducing on-campus housing density, if provided?*

**Does the school plan to test all for COVID-19 at term start, then periodically?** ○

**Does the school plan changes to tuition and/or room & board fees?** ○

### SOCIAL LINKS



## WESTMINSTER CHOIR COLLEGE

Rider University

For current information, please [see this school's website](#).



# YALE SCHOOL OF MUSIC

Yale University

## WHAT DISTINGUISHES THIS SCHOOL?

At the Yale School of Music, we prepare exceptional students for service to the profession and to society. The School fosters a vibrant musical environment where graduate-level performers and composers realize their highest artistic potential with an internationally distinguished faculty. A graduate professional school for students of exceptional ability, the School offers exceptional musical training as well as the opportunity for students to participate in the rich intellectual life of Yale University to develop and pursue interests in areas outside of their majors.

**LOCATION** 98 Wall Street  
PO Box 208246  
New Haven, CT 06520-8246  
UNITED STATES  
[music.yale.edu/](https://music.yale.edu/)

**ADMISSIONS** 203-432-4155  
[gradmusic.admissions@yale.edu](mailto:gradmusic.admissions@yale.edu)

**Audition Requirements** [Audition Requirements](#)

**FINANCIAL INFORMATION**  
[Tuition & Fees](#) / [Financial Aid & Scholarships](#)

**CAREER / POST-GRADUATION ASSISTANCE**  
[Career assistance](#)

## Yale SCHOOL OF MUSIC

**KEY STATISTICS** (college level and above)

**200** music students

**Music Faculty:** **35** full time, **30** adjunct

## AREAS OF STUDY

Brass • Composition (Performance) • Conducting  
• Early Music • Organ • Piano • Strings • Vocal Arts/  
Opera • Winds & Percussion • Conducting (Choral)  
• Conducting (Orchestral) • Guitar • Harp  
• Harpsichord

## DEGREE PROGRAMS

[Undergraduate Programs](#) / [Graduate Programs](#)

*Additional details:* Master of Music; Master of  
Musical Arts; Doctor of Musical Arts; Artist Diploma;  
Certificate in Performance; BA/MM

## ADDITIONAL PROGRAMS

(non-matriculating/prep)

[Norfolk Chamber Music Festival & Yale Summer  
School of Music](#) / [The Collection of Musical  
Instruments](#)

## PANDEMIC & SAFETY

✓=Yes ✗=No ○=Under consideration

[Policies & Procedures for this school](#)

## Is the school considering:

✗ *Shifting semester start and/or end dates?*

✓ *Changes to class and/or ensemble sizes?*

✓ *Shifting more coursework online?*

✓ *Requiring masks for students, faculty, staff?*

✓ *Reducing on-campus housing density, if provided?*

**Does the school plan to test all for COVID-19 at  
term start, then periodically?** ✓

**Does the school plan changes to tuition and/or  
room & board fees?** ✗

## SOCIAL LINKS



## Yale SCHOOL OF MUSIC

# The stage is yours.

Students at the Yale School of Music are driven professional artists who aim to deepen their music-making and further their careers under the mentorship of a distinguished faculty and with the benefit of a full-tuition award and living stipend.

With unsurpassed resources and state-of-the-art facilities, Yale helps students activate their imaginations and realize their exceptional promise. **At Yale, music is everywhere.**

[music.yale.edu](https://music.yale.edu)

In addition to the Music Schools featured in this special report, the [Musical America database](#) of more than 1200 music schools worldwide is free of charge for the month of September 2020!

## [A Guide to Music Schools](#)

View the 2020–21 Guide online along with information about additional schools.

## [Conservatories as Good Citizens: Four Success Stories](#)

## [Where Training in the Arts Meets Training for Life](#)

## [Remote Music Lessons, in Real Time and Almost-Real Time](#)

## [Of Shrinking Pools and Expanding Puddles of Opportunity](#)

## In The Next Issue...

# Summer Camps, Institutes & Programs

*The Musical America Guide*

*Coming 3 November 2020*

Questions? Email [info@musicalamerica.com](mailto:info@musicalamerica.com)

## Advertiser Index

Blair School of Music at Vanderbilt University.....	15
Boston Conservatory at Berklee .....	4
Crane School of Music, SUNY Potsdam .....	19
The Glenn Gould School.....	12
The Hartt School, University of Hartford .....	14
Indiana University Jacobs School of Music.....	16
JAM MUSIC LAB Private University .....	8
The Juilliard School.....	18
Longy School of Music of Bard College .....	20
Manhattan School of Music .....	22
Northeastern University .....	33
Oberlin College & Conservatory.....	39
Opera Steamboat.....	39
Peabody Conservatory of The Johns Hopkins University .....	27
Pepperdine University.....	8
San Francisco Conservatory of Music (SFCM) .....	19
The Shepherd School of Music at Rice University.....	15
The Tianjin Juilliard School.....	32
UCLA Herb Alpert School of Music.....	17
UNC School of the Arts .....	38
University of Cincinnati College—Conservatory of Music (CCM) .....	34
University of Denver Lamont School of Music .....	21
University of Southern California Thornton School of Music .....	40
University of Tampa Department of Music.....	13
Yale School of Music .....	42

### Stephanie Challenger

*Publisher and Managing Editor*

### Susan Elliott

*Editor, Special Reports*

[editor@musicalamerica.com](mailto:editor@musicalamerica.com)

### Advertising

609-448-3346 ■ [info@musicalamerica.com](mailto:info@musicalamerica.com)

### Frances Wan

*Design Director | Database Publishing Specialist*

### Howard Roth

*Business Consultant*

### Clive Paget

*Features Editor, Musical America Directory*

### Bill Esposito

*Manager of Listing Services*

[listings@musicalamerica.com](mailto:listings@musicalamerica.com)

### Carolyn Eychenne (Europe)

*Advertising Sales Representative*

33.1.39.58.14.01 ■ [carolyn@eychenne.me](mailto:carolyn@eychenne.me)

### Andrea Rancati (Italy)

*Advertising Sales Representative*

39.02.703.00088 ■ [arancati@rancatinet.it](mailto:arancati@rancatinet.it)

### Debra Kraft

*Account Coordinator*

[dkraft@musicalamerica.com](mailto:dkraft@musicalamerica.com)

### PUBLISHED BY

**Performing Arts  
Resources, LLC**  
Your source for news and information

### PERFORMING ARTS RESOURCES, LLC

PO Box 1330, Hightstown, NJ 08520

609-448-3346 ■ [info@musicalamerica.com](mailto:info@musicalamerica.com)